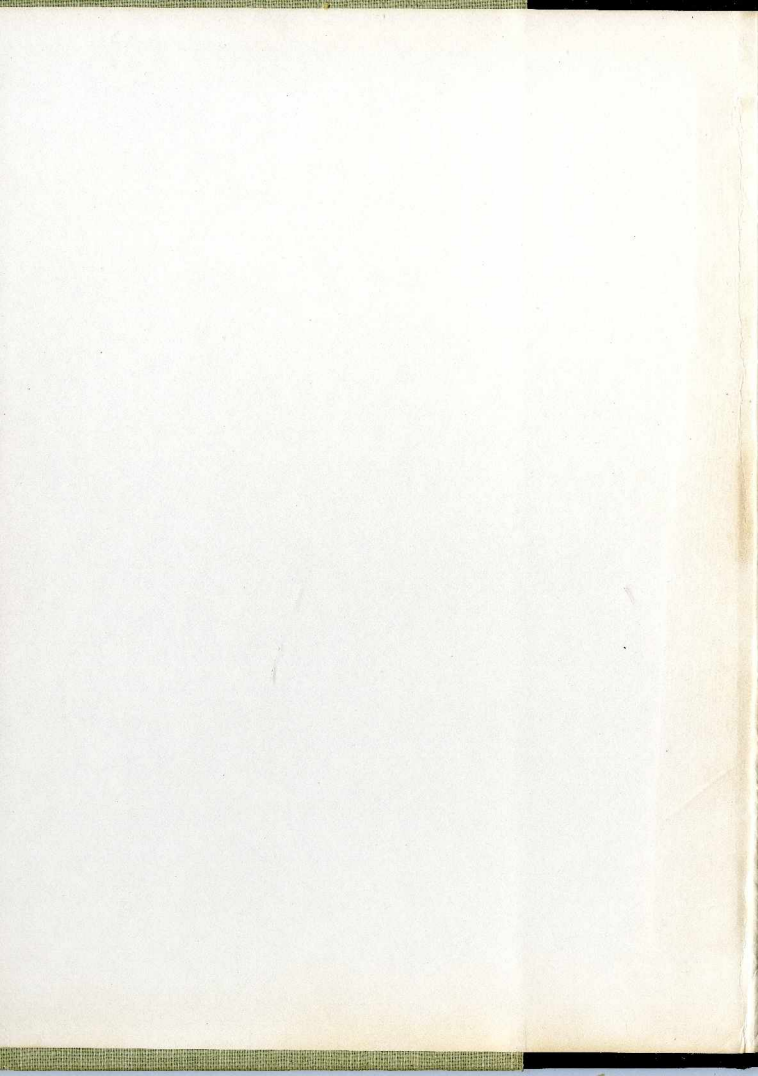


revonah

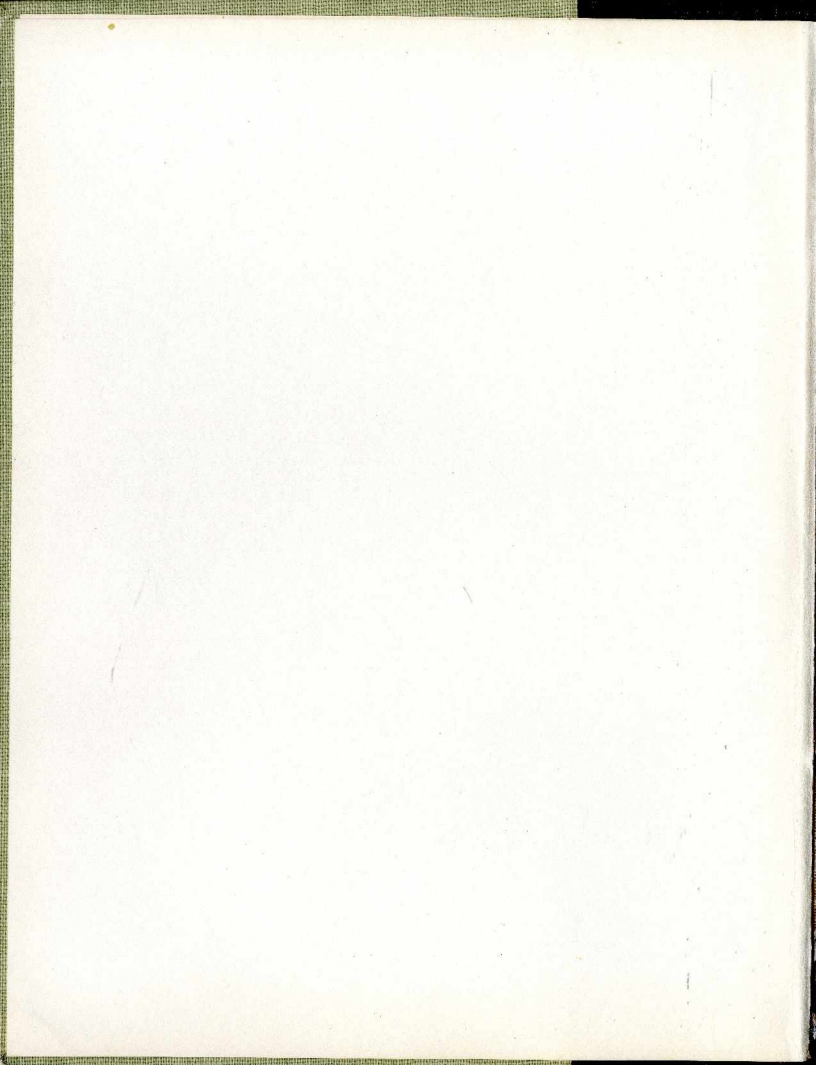
1954

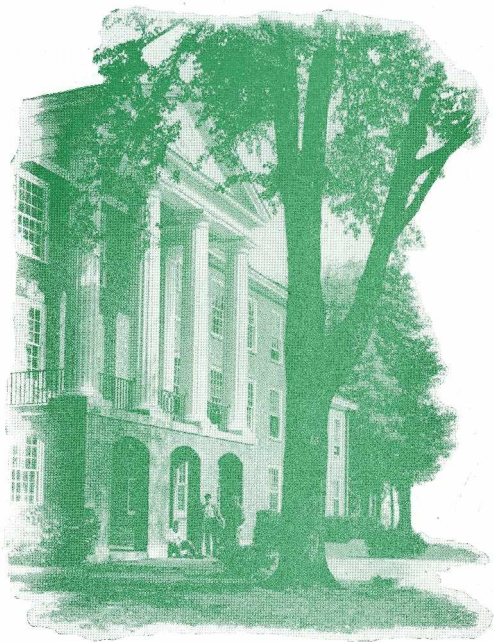


HANOVER COLLEGE



| | |
|---------------------------------|-------------------------|
| Editor..... | BARBARA BUCKINGHAM |
| Assistant editors..... | ALICE BOWIE NAN TODD |
| Business manager..... | JACK SCHNABEL |
| Assistant business manager..... | SAM WASHBURN |
| Sports editor..... | MORT PRIME |
| Art editor..... | BETH FISCHER |
| Layout editor..... | JULIA MATTHEW |
| Copy editor..... | SUZANNE BERRY |
| Copy staff | |
| Carolyn Sacksteder | |
| Shirley Lewis | |
| Ardeth Luther | |
| Jane Hungate | |
| Carol Warner | |
| Advertising editor..... | BILL KISER |
| Advertising staff | |
| Delma Lear | |
| Jane Powers | |
| Judy Black | |
| Shirley Watkins | |
| Nancy Doolen | |
| Marcia Leslie | |
| Photographers | |
| Russell Benson | |
| Duncan Scheids | |
| Louis Mellencamp | |
| Marge Inman | |
| Charles Lipp | |
| Tom Roe | |
| George Fulton | |
| Frank S. Baker | |

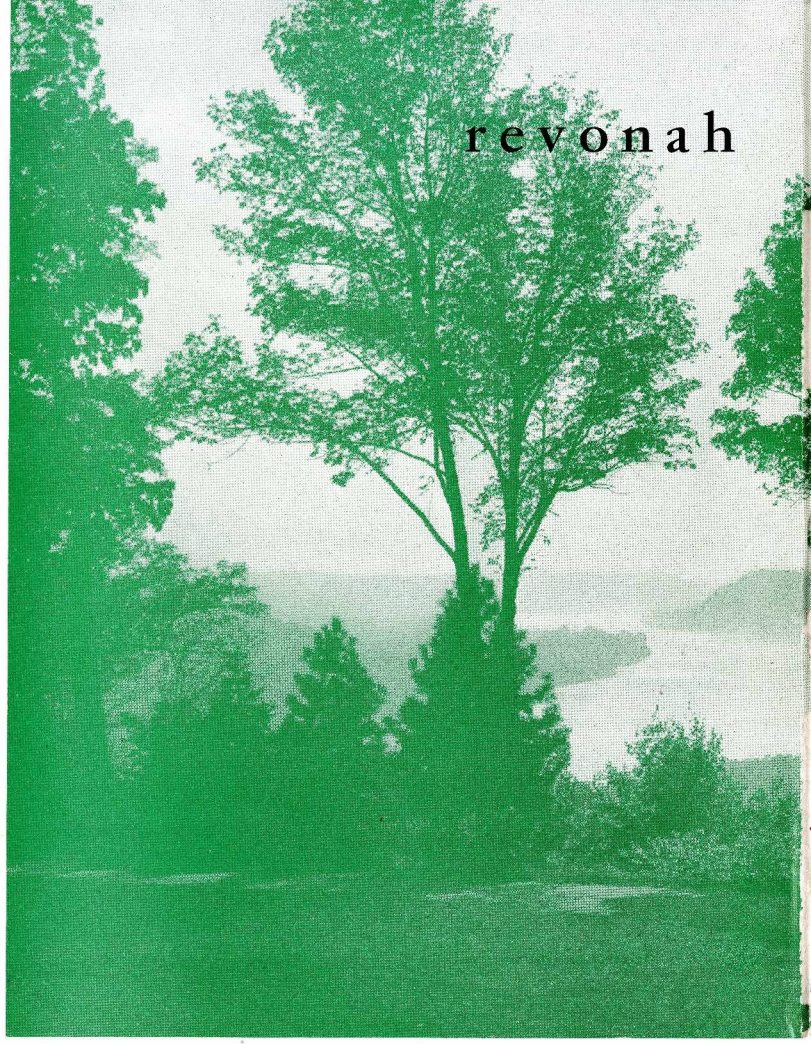




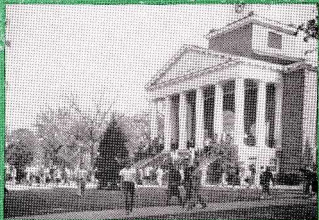
revonah

HANOVER COLLEGE • HANOVER, INDIANA • 1954

revonah



1954





frosh week previews...

why didn't we bring a truck?

*questionnaire, activity
cards, questionnaire,
class schedules, ques-
tionnaire, car regis-
tration, questionnaires!*



"\$8.75 for that?"





a friendly year

Ron and By look over the freshmen

*...informal formality helps
in getting acquainted.*





the greeks...

"getting to know you. . ."

"getting to like you. . ."

"getting to know you like me. . ."





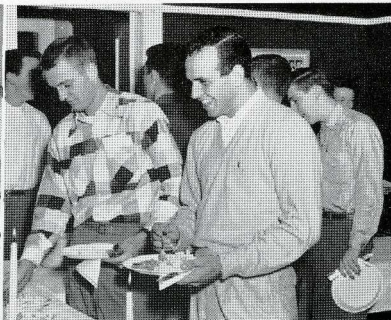
"and about our new swimming pool . . ."

call it "rush"

the way to . . .

a rusbee's heart

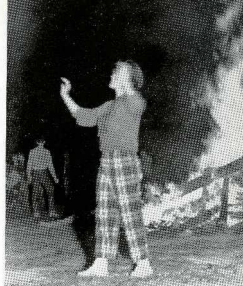
7



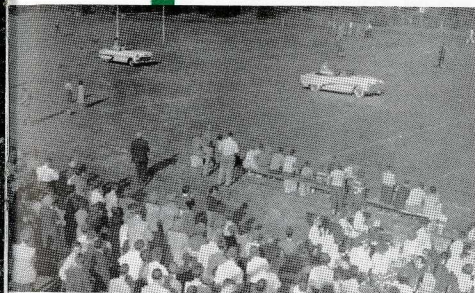


homecoming 1953...

a new building here, a new grove of trees there—and yet somehow it's the same hanover atmosphere which welcomes the alums each year.



"bail hanover, alma mater. . ."



halftime. . .

*dynamite, drive, and
determination win for
sigma cbi*





*introducing the honey tones—
entertainment for the sno-ball
whirl. . .*

a hanover winter

*destination home-cooked
food*







*1,028½ trips from point house to
our new house*

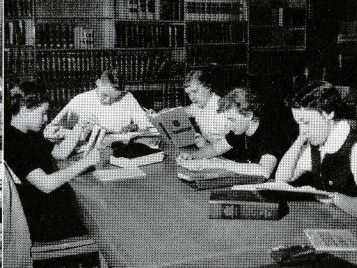
moving...

*"ten down—thirty to go"
"...didn't study the right things,
but then I didn't study. . ."
"at least it's over!"*





cramming m.r.b. style



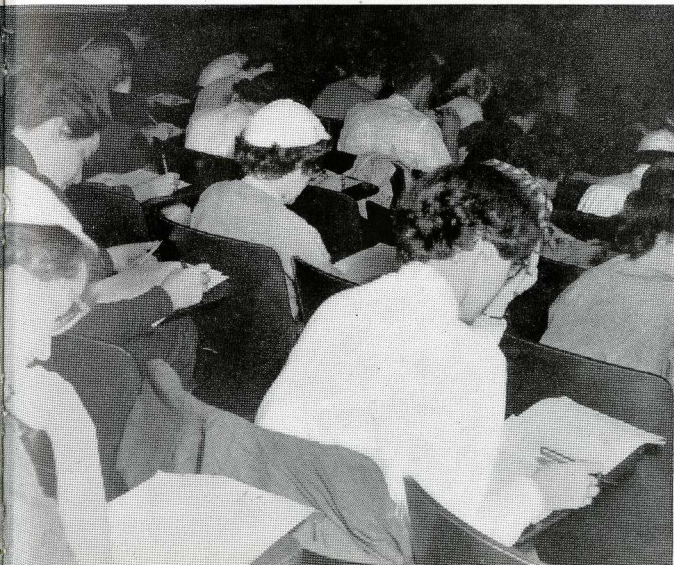
bitting the books



that continuous break

into finals

this is for real!

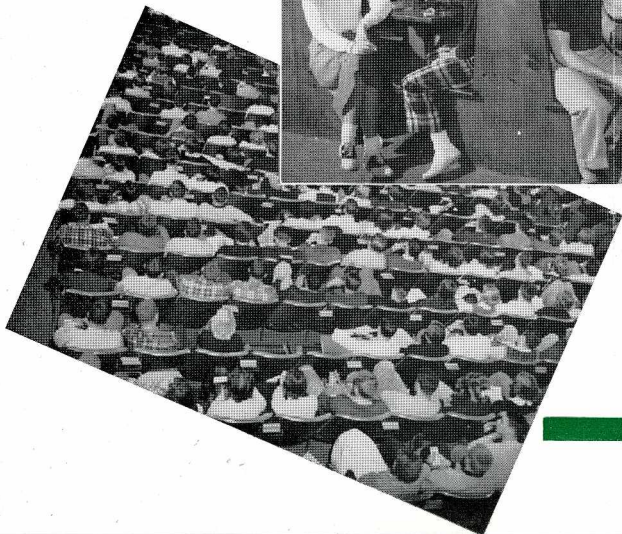


*"... will not meet
his classes today*

E. M. T."



*thursday—our
favorite assembly*



"just..."

"money, at last!"



banover players backstage



*co-ed dining—it's
here to stay*



the facts"

"fifteen—love"





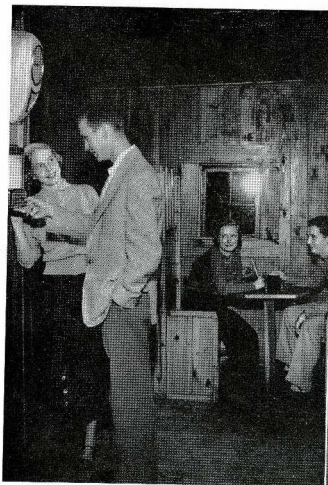
"fine, see you at 8:00."



"... lobby, please."

it's a date!

"... if you love me, ..."



"goodnight, ..."





the man of the hour. . .



no chapel, either. . .

i. c. victory calls for cut day

school spirit soared to sheer madness when Bill Morris scored to put banover ahead as the gun ended the i. c. game. the student body took a holiday and cut classes the next morning. the all-day celebration included a parade, speeches, a snake dance, and a soc hop at lynn hall.

music, candlelight, and formals lend atmosphere to the m.r.b. dinner-dance





sorority court

modern... french provincial... or early american

period furniture characterizes each of the new sorority houses as faculty and students found in viewing the interiors at the official pan-bel open house. basement, dorms, and study rooms were also opened for inspection after a thorough cleaning the day before.

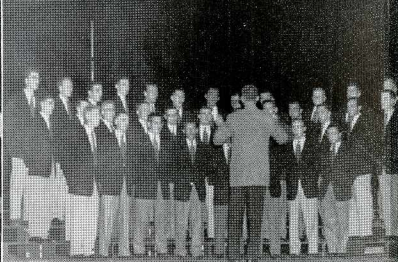
open house dignitaries







a.d.'s in a "blue world"

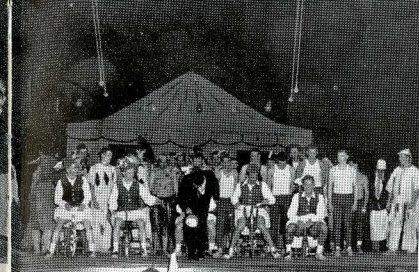


a "beta medley"

in spring, students...



*fiji's switch
riders for the
twenty-third lap.*

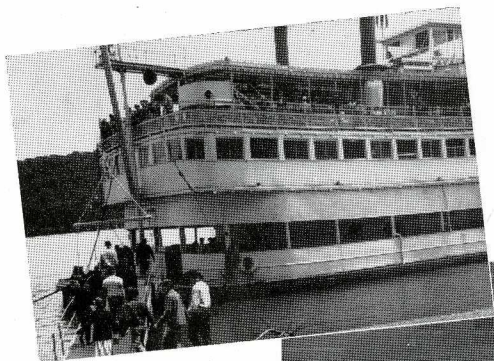


sigs' "circus galore"



*pbi ma's take hanover
to the rose bowl*

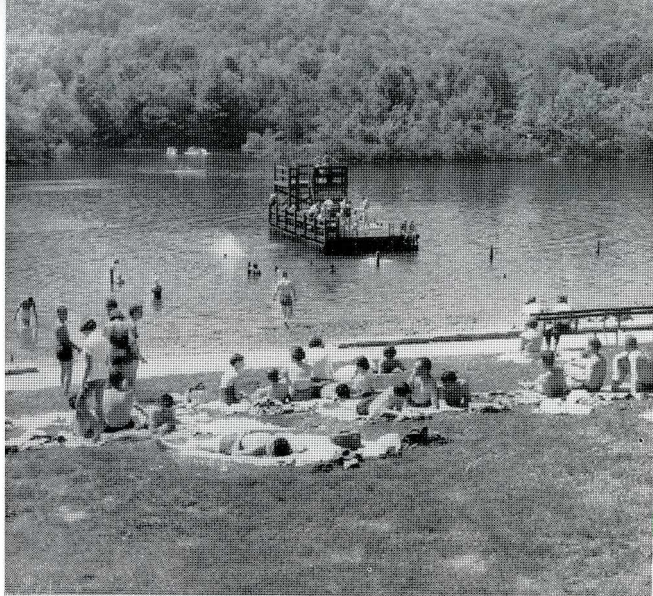
turn to...



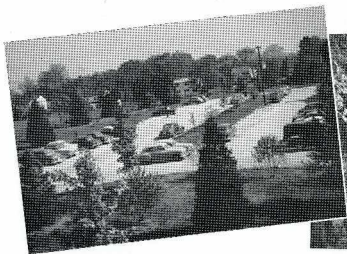
*"cruising down the
river. . ."*

*the trial presents
Buddy Morrow. . .*





one "class" that's sure not dry



*we park our cars to go
over the point*



hanover's night school. . .



thoughts of...

roses from Homer to his lambda chi sweetheart





sociology 37. campusology

studying, activities, and graduation

"showtown, u.s.a."

original music by Jim Hargraves

original script by Jan Conrad

choreography by Orchesis

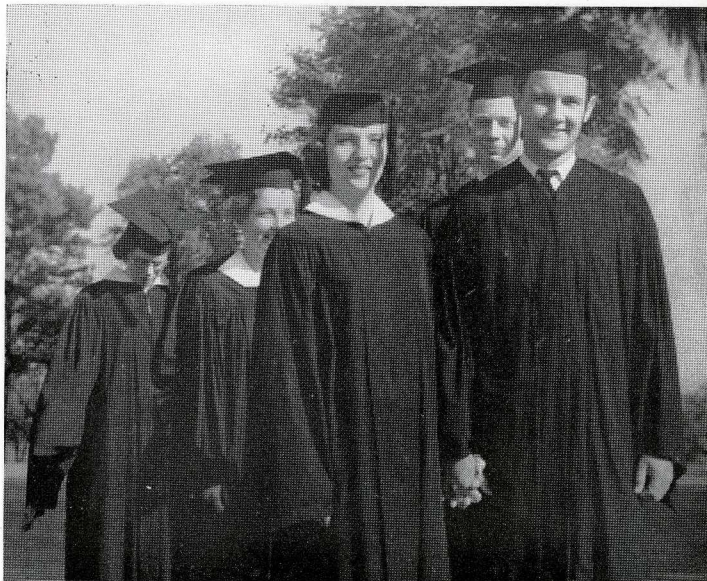
directed by Bob Dulaney



*a night of strange
adventure on "high
tor"*



after four years. . .

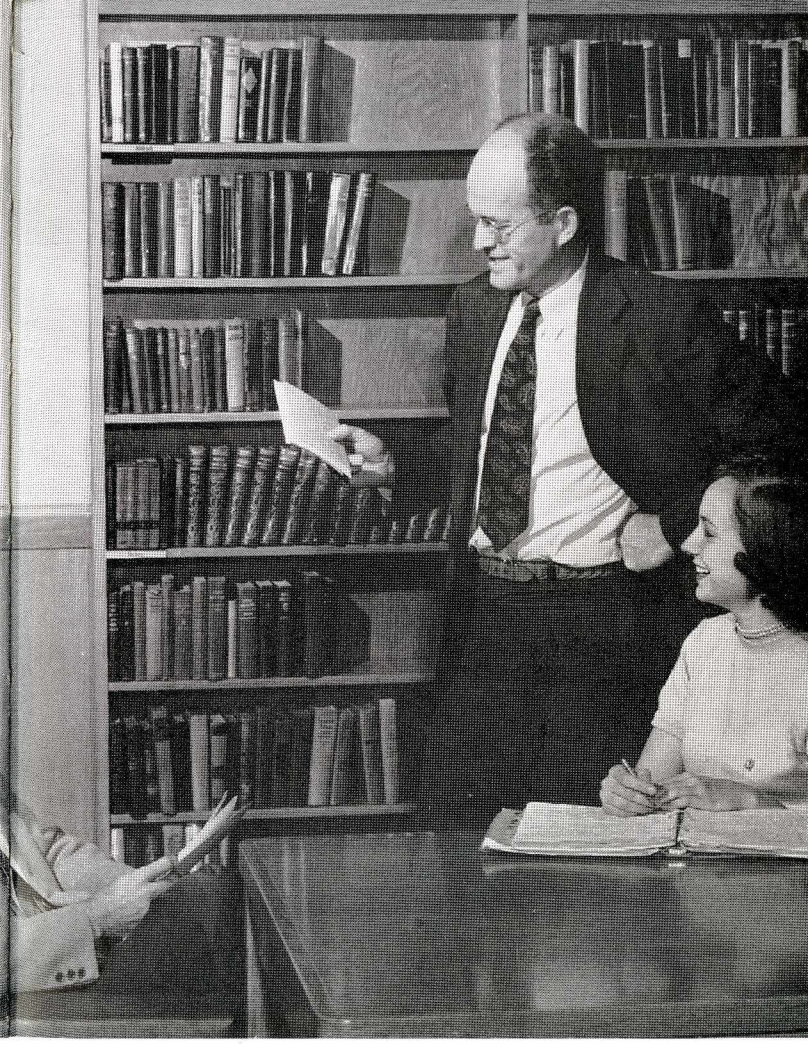


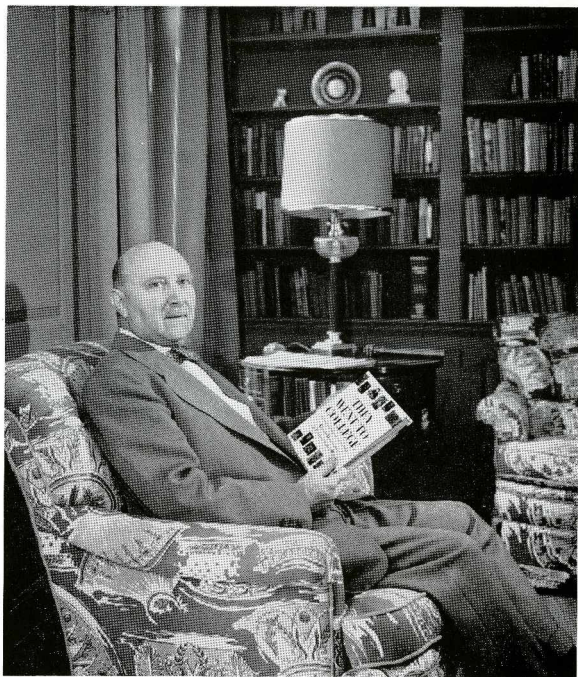
banover faculty lead to knowledge

pathways that lead to members of the faculty are varied and well-worn.

bringing not only classes but, more important, informal talks and discussions, these paths are traversed by students who find friendliness and assistance in the help offered by our professors.



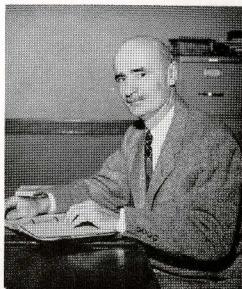




Albert G. Parker, Jr., President

under Dr. Parker's 25 years of able administration, hanover has grown and prospered—in physical plant and in prestige. in addition, he and his gracious wife have opened their lovely home often for the use of students and faculty.

E. Mowbray Tate, Dean



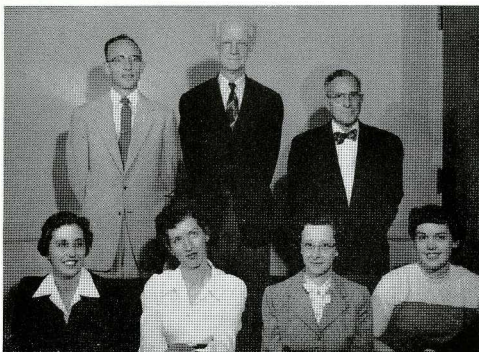
Dorothy Sims Bucks, Dean of
Long College for Women of Han-
over College and Professor of
English

Robert Calvert, Jr., Dean of Men and Director
of Placement



Naomi B. Brown, Dean of Residence and In-
structor in Sociology





Top Row: W. Ralph Burress, Bursar; Dr. Guy Campbell, Honorary Curator of the Geological Museum; Wilbur H. Nagel, Ex. Sec. Alumni Association. Bottom Row: Mrs. Robert Bowers, Secretary of the Office of Admissions; Miss Louise Daus, Registrar; Miss Leona Snyder, Senior Secretary; Mrs. Robert Lauer, Secretary to the President.

administrative staff

faculty

S. Clifford Adams
Professor of Geology



Ronald L. Austin
Professor of Business Administration



Alvin K. Bailey
Professor of Religion



Margaret S. Bailey
Associate Professor of French

Frank S. Baker
Associate Professor of English and Journalism

Howard L. Binkley
Assistant Professor of Economics

Glen L. Bonsett
Assistant Professor of Physical Education



"But Ugolino want to know . . ."



Robert D. Bowers
Professor of History

Margaret R. Davis
Instructor in Speech

Vladimir Dupre
Associate Professor of Psychology and Sociology



Louise Daus
Registrar and Instructor in English

Anna Marie Fisher
Associate Professor of Education

Mary Louise Fitton
Librarian



Charles F. Fox
Instructor in English

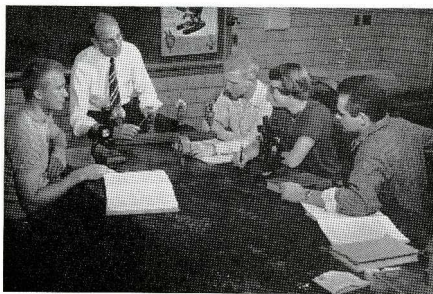
Richard F. Grabau
Associate Professor of Philosophy



Ruth Elizabeth Graham
Professor of Music

Ned Guthrie
Professor of Chemistry

"Now at this particular point. . ."



Charles A. Henry
Admissions Counselor

Emma May Hill
Associate Professor of Spanish

Roberta J. Hill
Assistant Professor of Physical Education

John Frederick Jansen
Professor of Religion

Paul B. Keach
Assistant Professor of German

Leonard J. Kramer
Professor of Political Science



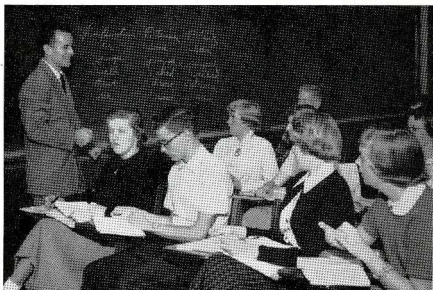
Russell M. Kutz
Professor of Education

Walter Mann
Assistant Librarian

R. Earl Martin
Professor of Physics

James H. Maysilles
Assistant Professor of Botany

"Now I'm sure I made that assignment!"



Leland W. Miles, Jr.
Professor of English

John Molodet
Instructor in Physical Education

Maria C. Murray
Part-time Instructor in Art

W. Maxwell Poland
Associate Professor of Music and Director of Music

Arthur R. Porter, Jr.
Professor of Economics

Enos G. Pray
Professor of Zoology





Mona Russell
Instructor in Physical Education

Walter L. Stone
Professor of Sociology



Raymond F. Struck
*Associate Professor of Physical Education and
Director of Athletics*

Don A. Watters
Professor of Speech

"Kramer's the name!"



J. Dan Webster
Professor of Zoology

Mars M. Westington
Professor of Classical Languages and Literature

Grant T. Wickwire
Professor of Geology

Dale E. Woerner
Associate Professor of Chemistry

John E. Yarnelle
Professor of Mathematics

George A. Zirkle
Professor of Psychology



queens reign...

... over every homecoming,
cheering the team to
victory and lending a spirit
of royalty to all.

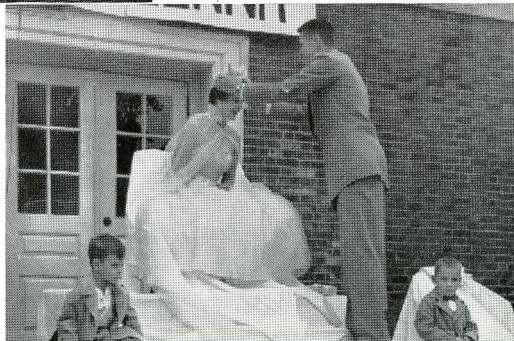


throughout...

... the nation cherry blossom
princesses are chosen, but on our
campus our princess rules
as queen.

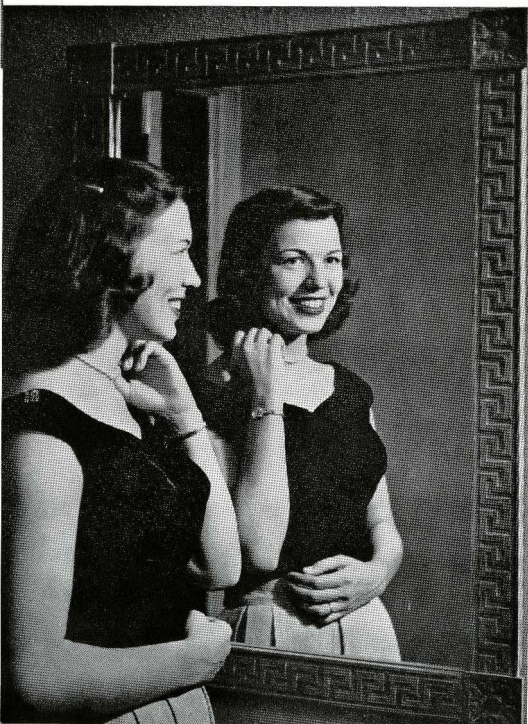
the year

... ends with the crowning
of our may day queen
at the traditional ceremony on
family day.



homecoming queen...

Marie Eskew, sophomore, Ellic Guthrie, senior, and Nancy Roberts, senior, were chosen by the inter-fraternity council as candidates for queen and accompanied Queen Sally in convertibles at the homecoming game.



sally stiles

the 1953 homecoming queen, chosen in a campus-wide election, was crowned at the half-time ceremonies.



cherry blossom queen...

Mary Roberts and Shirley Longnecker,
the runners-up in hanover's annual
cherry blossom queen contest, were selected
to represent their sorority by
the *triangle* editors.

barbara kitchell

As 1954 cherry blossom
queen, Barbara represented
hanover in the state-wide con-
test sponsored by the
indianapolis star.



may day queen...

the queen's court was chosen from the senior girls by the s. c. a. cabinet. shown from top to bottom are, left, G. G. Polk, Carolyn Sacksteder, Carolyn Wade, Pat Walne, and, right, Ginny Vogel, Nancy Johns, Joan Templin, and Nancy Roberts. not pictured are Nancy Coswell and Ann VanCamp.



donna strettar

the 1954 may day queen, was elected by the student body to reign over this traditional festivity on family day.

activities lead...

to an expression of personal
interests and talents,
filling hours after classes
with work and fun.



to clubs...

belong much of the credit for a happy
and profitable college career.

and bonoraries

expanded by reaching out a
hand of welcome to a new
scholastic organization,
Alpha Lambda Delta.





Top Row: B. Fisher, J. Danbury, J. Lloyd, M. Spencer, N. Wardwell, J. Briscoe, J. Massman, P. Diller. Second Row: J. Hungate, B. Brewer, N. Roberts, M. Ardjomand, B. Rieckhoff. Bottom Row: N. Johns, H. Eby, D. Dean, C. Wade, E. Guthrie.

student council

The Student Council enjoyed a very successful year under the leadership of Larry Gloyd, president; Bob Brewer, vice-president; Nancy Roberts, secretary; and Bob Szor, treasurer. Success was due, also, to the faithful work of the members from the various campus social organizations.

board of student affairs

The Hanover Board of Student Affairs, a joint student-faculty body, is the judicial branch of Hanover student government. It concerned itself largely with social rules and regulations during the past year.



Top Row: Dr. J. Jansen, Dr. R. Calvert, Dr. G. Zirkle, D. Davis. Bottom Row: W. LaFeber, chairman, G. Vogel, B. Brewer, Dr. D. Bucks, C. Sacksteder, Mrs. D. Hill.

panhellenic council

The Panhellenic Council is composed of three members from each sorority and a faculty advisor, Dr. Dorothy S. Bucks. Besides making rush rules and sponsoring the Freshman tea, the council adopted a French war orphan and cooperated with the I.F.C. in planning Greek Week. This year the Panhellenic trophy was awarded to Nancy Johns.



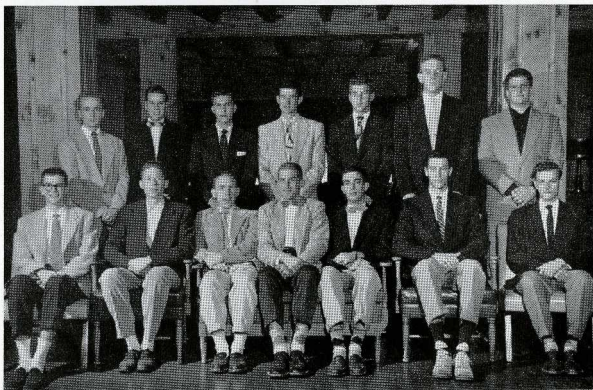
Top Row: P. Logsdon, G. Vogel, president, P. Walne, Dr. D. Bucks, D. Strettar, G. Polk, J. Hungate. Bottom Row: P. Mauger, C. Ziegler, N. Johns.

interfraternity council

This governing body, composed of three representatives from each fraternity, has the responsibility of co-ordinating interfraternity affairs to the best in-

terest of all concerned. It is interested, also, in promoting constructive competition in many phases of fraternity life.

Top Row: S. Washburn, B. Dulaney, J. Rose, R. Gray, R. Hamm, M. Baas, J. Powell. Bottom Row: J. Massman, J. Felland, M. Hennegan, D. Casten, president, B. Vamos, D. Ward, B. Hamilton.





Top Row: Dr. R. Austin, M. Prime, W. LaFeber, R. Kersting, B. Buckingham, L. Simbalmos. Bottom Row: P. Walne, N. Dysart, J. Hungate, Miss M. Fitton, C. Sacksteder, C. Bayer, president.

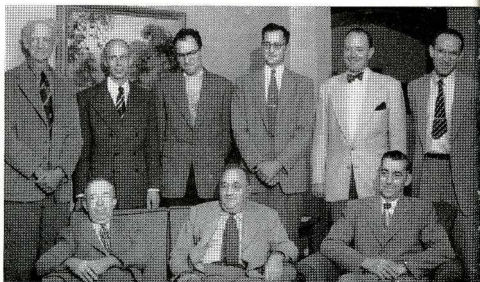
alpha phi gamma

Alpha Phi Gamma is a national honorary journalistic fraternity. Qualifications for membership are three semester's work on any of the three major publications, or holding a major staff position. Awards are presented each year to the outstanding freshman in the field of journalism, and an editor's award is given for outstanding service. One of APG's projects this year was to prepare to Hanover Handbook for incoming freshmen.

delta epsilon

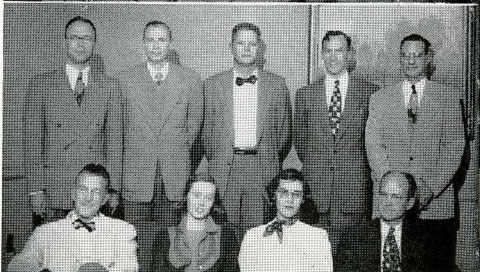
Delta Epsilon is a science honorary for seniors and graduate students. To be eligible for membership a student must have a major and minor in science, have done some work in a third science, and have a high scholastic record in all subjects studied. Present senior members are Margaret Hiatt, Jerry Pelland, Doris Huber, Joe Wells, Lora Marlette, George Kostka, and John Hawley.

Top Picture: Top Row: Dr. G. Campbell, Dr. E. Pray, Dr. D. Woerner, Prof. J. Maysilles, Prof. J. Yarnelle, Dr. J. Webster. Bottom Row: Dr. E. Martin, Prof. N. Guthrie, Prof. G. Wickwire. Bottom Picture: Top Row: Prof. A. Porter, Dr. G. Zirkle, Prof. V. Dupre, Prof. H. Binkley, Dr. R. Austin. Bottom Row: Dr. L. Kramer, B. Buckingham, L. Simbalmos, Dr. R. Bowers.



pi gamma mu

Indiana Beta chapter of Pi Gamma Mu, national social science honorary, has been on Hanover's campus for over twenty years. Requirements for initiation are twenty hours of social science courses with a B average and a class standing in the upper ten per cent.



alpha lambda delta

Alpha Lambda Delta, a national freshman women's scholastic honorary, was installed on the Hanover campus in December, 1953, with a charter membership of twenty-four collegiate members and four honorary members. In April, eighteen freshmen were initiated after making the required 2.5 average. The purpose of this new organization is to promote higher standards of learning among freshmen women.



Top Picture: P. Moffett, A. VanCamp, R. Adair, P. Heberling, C. Ortle, R. Bozardus.

Bottom Picture: Top Row: Dr. R. Bowers, E. Whinrey, R. Gray, W. LaFeber, R. Kersting, D. Davis, J. Schnabel, E. Guthrie. Second Row: L. Simbalmos, P. Walne, president, B. Buckingham. Bottom Row: L. Marlette, M. Spencer, D. Huber, S. Berry.



Top Row: M. Bogner, J. Ross, G. Crawford, M. Herzog, J. Bierbaum, J. White, E. Heckard, D. Flory, L. Simbalmos, M. Hiatt, M. Oliver, M. Poe, M. Steinmetz, B. Eskew, G. Horwarth, R. White, D. Huber, M. Spencer, Dr. M. Bailey, B. Buckingham, C. Forbes. Second Row: E. Guthrie, P. Walne, J. Kasperek, D. Pickens, P. Patterson, B. Clift, B. Kryter, president, B. Kitchell, A. Luther, S. Berry, A. Herzog. Bottom Row: B. Little, G. Perry, S. Henry, S. Jinks, S. Hoover, S. Stonebraker, C. Warner.

theta alpha phi

Theta Alpha Phi, the national dramatic honorary fraternity, is the highest organization to which a Hanover Thespian may aspire. A prerequisite for Theta Alpha Phi is membership in Hanover Players. News of the Hanover theater is published in "Cue," Theta Alpha Phi's magazine.

gamma sigma pi

Membership in this local honorary scholastic society, founded in 1927, is based on character and high scholarship. New members, recognized on Honors Day, are presented with certificates and are honored at the annual banquet, this year held at Parkers'.



hanover players

Hanover Players has cooperated with the College Theater this year in presenting three full length plays and several one act plays. The full length plays were "Twilight Walk," "Bliche Spirit," and "High Tor." Ann VanCamp was president of the group which is composed of people who have worked on the various aspects of play production.

Top Row: Prof. D. Watters, J. Danbury, P. Moffett, S. Berry.
Bottom Row: B. Bogardus, G. Fulton, A. VanCamp.



chi epsilon phi and delta kappa chi

Delta Kappa Chi and Chi Epsilon Phi are two Greek letter organizations which consist of students who are interested in church work, and plan to participate actively in the work of the church. This year the two groups have met together for the purposes of study and worship, hoping that by such means they may be more able to understand and participate in the challenges a Christian life offers.

Top Row: D. Kastner, Dr. A. Bailey, R. Kersting, president, P. Fribley, B. Dulaney. Second Row: C. Mosiman, J. Schnabel, D. Patterson. Bottom Row: N. Wardwell, C. Geider, S. Nims, N. Coswell.



social science club

The relation of other fields to the social sciences was the theme for the Social Science Club this year. Campus and outside speakers presented a varied and interesting year's program. Highlights were a Smorgasbord, luncheon with Herbert Wright, of the N.A.A.C.P., and meetings with campus professors. Officers were: Luellen Simbolmas, president; Gene Hinds, vice-president; Delma Lear, secretary-treasurer; and Carol Bayer, publicity. Social Science Club is open to all students of the humanities and business administration fields.

Top Row: B. Buckingham, Dr. W. Stone, G. Fulton, M. Copeland. Second Row: C. Bayer, N. Vine, J. Hollensbe, L. Mellen-camp, S. Ramsey, M. Demaree. Bottom Row: D. Lear, G. Hayworth, G. Hinds, L. Simbalmas, president.

s.c.a. cabinet

Beginning with an annual Orientation picnic, the Student Christian Association sponsors various devotional and recreational activities. Every student can attend the regular Sunday supper meetings. Retreats, guests speakers, movies, student panels, services at the Memorial Site, deputation teams, W.U.S., and YWCA projects are included in the year's program.

Top Row: R. Kersting, D. Kastner, Rev. J. Fox, L. Smith, B. Dulaney, J. Brown. Third Row: C. Mosiman, C. Schopp, R. Haase, E. Heckard. Second Row: Miss M. Fittin, G. Vogel, J. Schnabel, president, N. Todd, C. Griffin, N. Coswell. Bottom Row: C. Sacksteder, S. Nims.



science club

This organization is composed of students and faculty interested in the biological, physical, mathematical, chemical, and geological sciences. Meetings are held twice a month at which time varied programs are presented—outside speakers, lectures by faculty and students, films, field trips. Mr. James Maysilles served as faculty sponsor of the organization.

Top Row: J. Massman, president, Prof. N. Guthrie, W. Walkenmeyer, M. Prime, Dr. D. Woerner, Prof. J. Maysilles. Third Row: J. Wells, D. Gilmore, Dr. E. Martin, Dr. E. Pray, G. Fulton, R. Bogardus. Second Row: A. Luther, M. Copeland, B. Eskew, D. Huber. Bottom Row: P. Walne, J. Schroeder, A. VanCamp, D. Walker.



epsilon mu delta

Epsilon Mu Delta was formed for elementary education majors when the elementary education program was reintroduced on Hanover's campus. The initial activity of the year was the annual Halloween party given for the Hanover school children. Movies pertaining to teaching and education have also been shown. The purpose of E. M. D. is to aid its members in becoming better teachers.

Top Row: M. Poe, S. Kemp, F. McKellips, R. White, E. Heckard, N. Wardwell. Fifth Row: L. Owens, J. Happ, B. Kitchell, A. Randell. Fourth Row: S. Berry, P. Sullivan, E. Gurhrie. Third Row: N. Roberts, B. Shepherd, C. Day, D. Oursler, J. Kroush. Second Row: B. Swengel, B. Griner, J. Schmitthorst, K. Dunbar, C. Schopp. Bottom Row: J. Matthew, L. Barnes, D. Pickens, D. Guthrie.





Top Row: M. Copeland, D. Yap, A. Mohandes. Second Row: S. Arreewongse, J. Felland, president, W. Parker. Bottom Row: C. Hickman.



Top Row: Dr. Kramer, C. Day, J. Rankin. Second Row: T. Palmer, B. Green. Bottom Row: S. Zierer, C. Mosiman.

international club

Seven foreign students formed the nucleus of the International Club this year: Manou Ardjomand, Danny Yap, Noushi Mohandes, Adoniram Nieves, Chong Lim, II, Mrs. Sritong Arreewongse, and Nezhat Rashid as well as several American students. Throughout the year international understanding and cooperation were stressed in a wide variety of meetings.

Highlights of the year's meetings included an illustrated talk on Mexico by Prof. and Mrs. Binkley, a reception at Dr. and Mrs. Parker's for Dr. Furbay, a discussion with Julius Gecau from Kenya, Africa, a buffet supper featuring dishes from many foreign lands, a talk on Thailand by Mrs. Sritong Arreewongse, Ado Nieves' talk on Puerto Rico, a weekend meeting with the University of Cincinnati International Club at Camp Meachan, Kentucky, and a piano concert by Patricia Chan from Indonesia.

p.a.f. steering committee

Better known as P.A.F., The Public Affairs Forum put on about fifteen different programs in the form of movies, speakers, displays and various other selections the past year. As the name implies, the P.A.F.'s function is to attempt to make the campus more aware of the world around them. This year's steering committee, which heads the organization was under the direction of Ginny Vogel, first semester, and Ted Palmer, second semester. Under the guidance of Dr. L. J. Kramer, as faculty adviser, the annual Institute was on the topic of South America. The main speaker at this outstanding event was Dr. Erico Verissimo, the distinguished South American author and speaker.

Top Row: D. Kastner, B. Kiser, M. Forsyth, M. Prime, D. Yap, D. Davis, P. Diller. Bottom Row: C. Lipp, G. Hinds, J. Hawley, president, Prof. J. Maysilles, J. Benson, C. Norris.

alpha phi omega

A national fraternity devoted to the service of the college, the community, and the individual, Alpha Phi Omega is composed of men previously affiliated with the Boy Scouts of America.





Top Row: G. Crawford, C. Griffin, Miss N. Brown, C. Bayer, president, N. Enns. Bottom Row: S. Berry, J. Largent, J. Miller, G. Hayworth.

inter-residence council

A relatively new organization of women on the campus, which is now in its second year of functioning, the Inter-Residence Council consists of three student members and a faculty advisor from each of the two women's dormitories and the three sorority houses. This body takes care of any difficulties which may arise pertaining to the regulations of women students throughout the year.

recreation committee

The newly rejuvenated Recreation Committee, a branch of the Student Council, plans and sponsors a variety of recreation throughout the year for the entire student body. Several movies, hiking, the annual Backwoods Party, and a National Inter-Collegiate Bridge Tournament are only a few, along with several dances and the Spring Boat Ride.

Top Row: L. Marlette, R. Shepherd, R. Brewer, T. Palmer, D. Steiner, J. Van Horn. Bottom Row: H. Eby, J. Kroush, J. McLure, Miss N. Brown, C. Mosiman, L. Simbalmos.





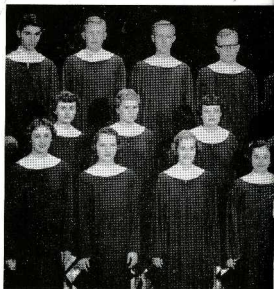
Top Row: F. Rickard, J. Voyles, G. Ricketts, F. Avril, B. Lauer, J. Schnabel, T. Cartnell, E. Schrock, Prof. M. Poland, A. Newhouse.
 Second Row: G. Hinds, D. Yap, D. Goerlitz, J. Powell, D. Grimm.
 Bottom Row: B. Rieckhoff, B. Light, R. Hungerford, M. Hull, S. Jinks, M. Yancy, B. Belter, E. Adkins.

band

The Hanover Band started the year by playing at the home football games. They then enjoyed many sessions of "just practicing," but showed that they could perform by providing music for the home basketball games, four assembly programs, May Day, and Honors Day. The band members also helped with the Southeastern Indiana District Solo and Ensemble Contest which was held on the Hanover campus. The band again this year was under the able direction of Maxwell Poland.

choir

The Hanover College Choir, an eight part vested choir of mixed voices, serves both the college and the Hanover community, preparing a weekly program of music as part of the worship service at the Hanover Presbyterian Church. Under the direction of Dr. Ruth Graham, the choir gave concerts at Rushville, Versailles, North Vernon, Greenwood, and at Indianapolis where they sang on radio station WIRE, in addition to giving their annual Christmas program and providing music for the Commencement exercise.

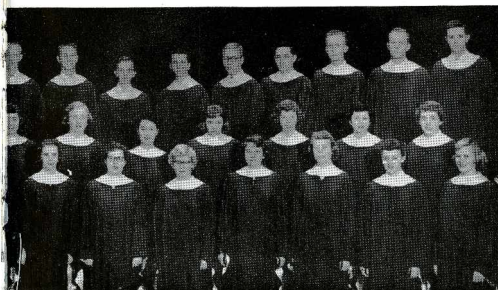




Top Row: D. Parker, J. Brown, T. Cartmel, D. Bailey, J. Barnett, D. Kastner, J. Schnabel, C. Shaw, D. Rankin, J. Hughes, L. Smith, R. Kersting, P. Fribley, W. LaFeber, H. Cutshall. Second Row: E. Heckard, G. Horwarth, M. Leslie, B. Carter, J. Berst, B. Little, G. Manthe, D. Pickens, S. Arreowongse, P. Patterson, B. Light, C. Sacksteder, S. Kemp, P. Sullivan, D. Dean, L. Barnes, M. Huffman, J. Hollensbe, J. Schmithorst, R. Hungerford, A. Trittip, R. Kerr, R. Groskur, B. Kitchell, N. Wardwell. Bottom Row: R. Haase, C. Huffman, D. Bechr, C. Schopp, C. Forbes, J. Breckenridge, J. White, D. Oursler, F. McKellips, O. Carson, R. White, S. Harter, J. Myers, J. McLure, N. Schipper, K. Dunbar, N. Johns, C. Mosiman.

choral union

The Choral Union, composed of the Hanover College Choir and nearly fifty additional singers, is the largest choral group on campus. It gave only one program this year, a highly successful performance of Handel's "Messiah," with eighty-voice chorus and professional soloists. The group is non-credit, and it meets once a week. Due to heavy choir schedule and other conflicts, no program was given second semester.



Top Row: D. Parker, T. Cartmel, D. Bailey, D. Kastner, J. Schnabel, C. Shaw, D. Rankin, J. Hughes, L. Smith, D. Patterson, R. Kersting, W. LaFeber, H. Cutshall. Second Row: G. Horwarth, M. Leslie, B. Carter, G. Manthe, P. Patterson, S. Arreowongse, P. Sullivan, R. Groskur, B. Kitchell, C. Mosiman. Bottom Row: R. Haase, C. Huffman, J. White, J. Breckenridge, D. Oursler, D. Dean, O. Carson, C. Sacksteder, president, R. Hungerford, J. Myers, N. Johns.



N. Roberts, C. Sacksteder, Mrs. D. Hill, E. Guthrie, K. Cappony, B. Klinefelter, J. Conrad, P. Walne, D. Dismore, B. Rieckhoff, Miss M. Russell.

w.r.a. cabinet

The Women's Recreation Association tries to provide a well-rounded program to satisfy the various interests of its members. Governed by a Board (pictured) of four elected and five appointed officers, the W.R.A. this year offered a wide variety of activities—hockey, speedball, ping-pong, camping, basketball, volleyball, badminton, bowling, archery, tennis, and softball, in addition to sponsoring a high school and a college sportsday. Each activity is supervised by the intramural chairman and a sports manager. For each sport successfully completed, 100 points are awarded; for earning 200, 800, and 1600 points, members receive awards in the form of numerals, letter, and sweater, respectively. For the more skilled members, basketball and volleyball teams engage in inter-school competition.

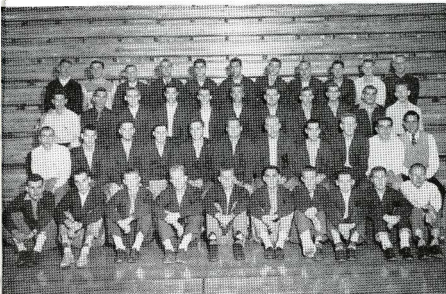
p.e.m. club

The Physical Education Majors and Minors Club is an organization of women who are majoring or minoring in the field of physical education and of the women faculty in that department. Films, lectures, speakers, discussions, reports, and other items of professional interest are presented at the monthly meetings of this group. New members are welcomed at the annual banquet in the fall. Members organize and sponsor the occasional co-rec sports nights during the year and cooperate with the men majors to plan a picnic for members of both groups in the spring.

Top Row: M. Gastineau, M. Works, C. Moore, J. Templin, N. Tucker, C. Wade, B. Eskew, B. Bidlack, S. Wharton, M. Lorts, P. Parker, J. Young, J. Berst. Second Row: D. Dean, D. Dismore, Miss M. Russell, A. Rodman, K. Cappony, B. Rieckhoff, Mrs. D. Hill, N. Herrington. Bottom Row: C. Wilde, I. Vestile, B. Klinefelter, P. Walne, M. Wertz.



Top Row: D. Hendricks, D. Deardurff, H. Stier, B. Szot, R. Wells, F. Terrell, R. Hamm, J. Ferrar, B. Leonard, R. Shepherd, L. Gloyd. Third Row: R. Gray, J. Sturges, J. Siefferman, D. Ward, J. Earl, J. Phillippe, L. Dugle, H. Federspill, B. Hancock, H. Hawkins, M. Hennegan. Second Row: D. Sutton, K. Keller, D. Kile, G. Hill, L. Towell, M. Forsyth, J. Haines, A. Allie, M. Baas, J. Emley, D. Davis. Bottom Row: D. Cox, D. Johnson, R. Busse, B. Kiser, D. Machek, E. Thompson, J. Dwenger, J. Rehm, J. Zitzow, W. LaFeber.



"varsity" b

The Varsity H Club started the school year out with a bang! After selling green beans to all the new freshmen, they sponsored the annual Homecoming dance, Fraternity Skit Night, and took care of the concession stands at the football and baseball games. This was all done under the able leadership of Homer Hawkins, George Hill, and Dick Hendricks. To become a member of this organization an athlete must have won a varsity letter in athletic competition.

modern dance

The Modern Dance Club, or Orchesis, had a very successful year. In the fall semester a Christmas program was given. The program consisted of a scene from a toy shop, the dancing of the story of "Amahl and the Night Visitors", and three other dances on Christmas themes. This spring something was tried that had never before been done at Hanover. An original musical, written by Jan Conrad with music by Jim Hargrave was presented. The choreography was done by Orchesis, and the production was directed by Bob Dulaney. The leads in "Showtown USA" were Marg Christie and Dick Hendricks.



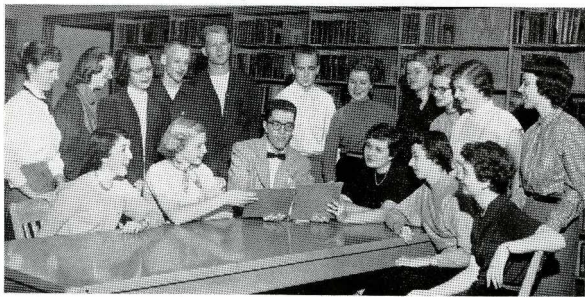
Top Row: T. Solazzo, M. Inman, B. Green, J. McLure. Third Row: O. Carson, S. Warkins, D. Pickens, M. Kinney, H. Koenig, J. Hughes. Second Row: C. Moore, G. Manthe, M. Christie, D. Walker, G. Stour, B. Eskew. Bottom Row: M. Roberts, S. Gould, Mrs. D. Hill, N. Roberts, R. Adair, C. Day.



revonab staff

The 1954 REVONAH follows the student over the course of the events and pathways which have made up this year at Hanover. The Staff has emphasized the new events, the exciting moments, and the everyday happenings of the past two semesters—all of which are now a part of Hanover's history.

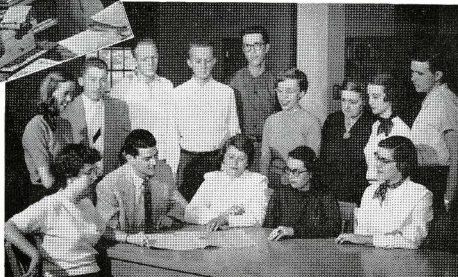
Top Row: N. Todd, B. Buckingham, L. Kelly, J. Schnabel, B. Kiser, S. Washburn, B. Fisher, M. Leslie, S. Berry, J. Powers, D. Lear. Bottom Row: M. Harkins, A. Bowie, M. Prime, J. Houghton, S. Lewis, J. Mathew.





triangle staff

News, editorials, sports, features—all come each Wednesday afternoon in the TRI-ANGLE. Co-edited this year by Carolyn Sacksteder and Ray Kersting, special features have been a new weekly international news column, a six page issue in March, and the all-important annual RAZZANGLE.



Top Row: B. Buckingham, T. Proud, W. LaFeber, R. Kersting, M. Prime, M. Herzog, Miss M. Fitton, S. Stapley, G. Hinds. Bottom Row: M. Copeland, R. Gray, C. Sacksteder, C. Bayer, L. Simbalmos.

Top Row: D. Yap, J. Danbury, B. Kryter, N. Todd, J. Hughes. Second Row: Dr. L. Miles, S. Fox, Prof. C. Fox, Miss M. Fitton. Bottom Row: C. Warner, J. Snyder, M. Bogner.

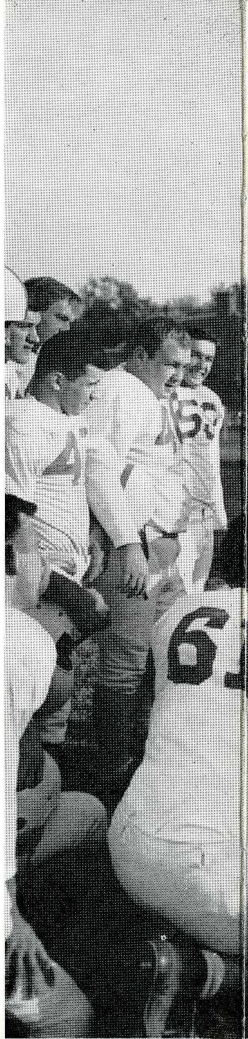


bill thoughts

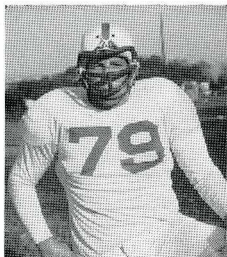
HILLTHOUGHTS is Hanover's literary magazine. It is a compilation of the best short stories, essays, sketches, and poems that have been written by students and faculty members. The works to be published are chosen by a board of editors. A prize of twenty-five dollars is awarded to the entry judged best by several chosen judges. Mr. Charles Fox was the managing editor this year. Those working as other members of the board were Mary Bogner, Janet Conrad, James Danbury, Miss Mary Louise Fitton, Susie Fox, John Hughes, Dr. Leland Miles, Nan Todd, and Carol Warner.

hanover athletics lead to victory

Well-worn paths can be found leading to the practice fields for sports. Spectators, also, follow in succession to watch the Panthers perform at game time. The year's schedule was highlighted by winning performances in cross country, football, basketball, tennis, golf and track. New emphasis on intramurals places sports as a vital part of Hanover life.



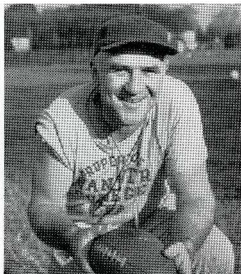




Above: Captain Jack "Hippo" Haines
Right: Head football coach R. F. "Dutch" Struck.

football

Ending his third season as head coach of Hanover College football is R. F. "Dutch" Struck, who guided the Panthers to conference victories his first two years, and who will hope to do it a third time next year. Captain this year was Jack "Hippo" Haines, a senior, and strong factor in both Hanover's offense and defense from his center position.



For the first time in three years, Hanover's gridiron players were unsuccessful in winning the Hoosier Conference football championship. Playing a tough schedule, the Panthers compiled an even record, with four wins, four losses, and one tie. Seniors J. C. Lytle and Dick Casten, and Junior Dick Deardurff were placed on the all Conference grid team, with Captain Jack Haines earning a berth on the second team. Prospects are bright for next fall, with only seven men being lost this year.

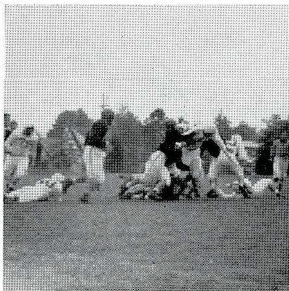
56

Top Row: L. Willen, R. Stanley, R. Shedd, T. Pucher, R. Brown, R. Kraft, J. Lytle. Fourth Row: L. Little, M. Real, W. Springer, G. Toana, J. Hough, D. Stiles, C. Mahoney, W. White. Third Row: R. Wells, J. Siefferman, D. Deardurff, E. Roof, R. Wright, T. Severs, H. Hawkins. Second Row: J. Tennant, M. Forsyth, J. Dawson, D. Cox, D. Davis, D. Kile, L. Scotten. Bottom Row: D. Hendricks, W. Kiser, L. Powell, R. Casten, J. Haines, R. Machek, J. Emley, T. Nacca.



hanover—13, ball state—13

Hanover opened its 1953 football season away from home against a tough Ball State eleven, battling the Cardinals to a thrilling 13-13 tie. All of the Hanover scoring came in the final quarter, with touchdowns by Roof and Casten. State got an early 6-0 lead in the first quarter, and collected 7 more points in the final action-packed quarter. But Casten's T. D. run for Hanover with less than four minutes remaining in the game, and Deardurff's successful conversion, told the tale.



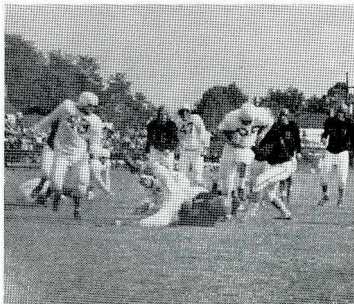
Casten meets Anderson's tough defense

hanover—26, anderson—0

The Panther gridiron machine hit its stride against a hapless Anderson eleven, blanking the Ravens 26-0 in the first home game of the year at Morgan Field. Neither team scored in the first quarter, but in the second period, Brown and Wright each went over for six points, with Wright kicking his own PAT to make the score

13-0. In the third period, Kile broke loose for a third Panthers touchdown, with a pass to Kiser good for the extra point. In the final stanza, Deardurff picked up six more, to round out the score. The Panthers found most of their strength on the ground, picking up 399 yards in total rushing, compared to 148 for Anderson.

The Big White charges through the Raven secondary



hanover—19, franklin—7

Hanover defeated old rival Franklin on the Grizzly field for her second loop win of the year, and another year's possession of the Hanover-Franklin Bell. Hawkins got the first Hanover T. D. on a recovered end zone fumble in the third quarter, with Brown and Casten each scoring in the fourth. Franklin's only score came in the fourth also.



Deardurff gets off a punt against Earlham

banover—27, earlham—14

The Panthers met a highly-rated Earlham grid crew in the annual Homecoming game, but had to come from behind to overcome an early Quaker two-touchdown margin to win, 27-14. Earlham took a quick first quarter lead by means of their efficient aerial attack, and for a while, it looked as though Hanover would come out on the losing side. But the Panthers started rolling in the second stanza on a touchdown by Wright. Soon after the second half opened Casten powered over for two touchdowns in a matter of minutes. Hanover was on to the Quaker passing attack by now, and Deardurff went over for six more in the final period, cinching a thrilling Homecoming victory.

banover—12, manchester—0

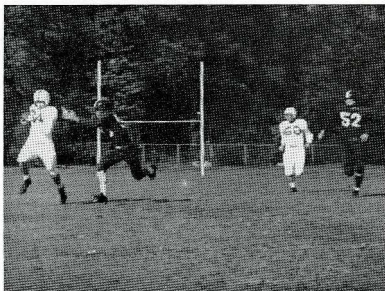
A trip to North Manchester gave the Panthers their fourth Hoosier Conference victory of the season in a 12-0 fracas with Manchester College, and kept their two-year perfect loop record unmarred. As typical of most of the season, the Hanover attack was held mainly to the ground. Casten scored both of the Hilltop touchdowns on short bursts into the end zone, the first coming in the opening period, and the second in the final quarter. Played on a dusty field, the game saw a previously winless Spartan eleven at their best, with Hanover unable to run up a high score.

indiana central—18

banover—6

Hanover suffered their first loss of the year against a smooth playing Indiana Central grid team, 18-6. It was the Greyhound's accurate passing attack that told the tale, with two of their touchdowns coming from passes, and the third on an intercepted Panther aerial. The Hilltop eleven was unable to crack the scoring column until the final period, when a Springer to Liddle pass clicked for six points. This vital game began to tell the tale as far as the conference was concerned.

Wells shakes Quakers for a clean getaway



wabash—65, hanover—6

Coach Struck's Panther aggregation stepped out of their class somewhat, when they faced a rough and tough Wabash College gridiron crew, coming out on the short end of a 65-6 mauling. Paced by powerful Stan Huntsman, who scored the first T. D., the Cavemen, tutored by former Hanover coach Garland Frazier, rolled up a 34-0 score at halftime. The Panthers took to the air this time, realizing their ground attack had met an overwhelming match. Hanover connected on 1 out of 10 passes, with one from Springer to Liddle in the fourth finally successful for the lone Panther score of the game.

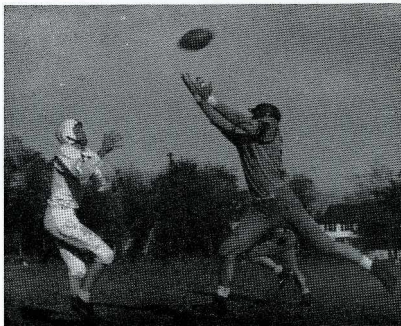


Typical of the Wabash game:
Deardurff fights for a short gain

taylor—7, hanover—6

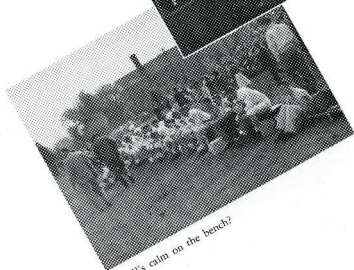
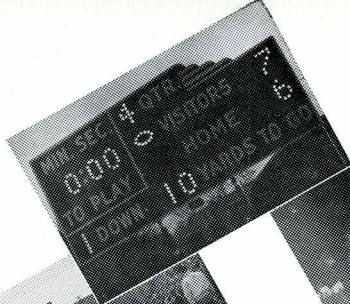
All chances for Hanover's third consecutive conference crown were erased when the Panthers met a determined Taylor Trojan grid team at Morgan Field in the final home game of the year. Taylor's sole touchdown came on a fumble by Deardurff, followed by a 70 yard sprint to the Hanover end zone. For the third time in a row, the Springer to Liddle pass combination gave the Hilltoppers their single touchdown of the game. The game saw a Hanover eleven, obviously hard bit by two previous defeats, unable to defeat a team that squeaked through by virtue of a slim one-point margin. Taylor never threatened again in the game, except in the fourth quarter, only to be held then by the strong Panther defense.

Will Liddle get it? (Taylor game)

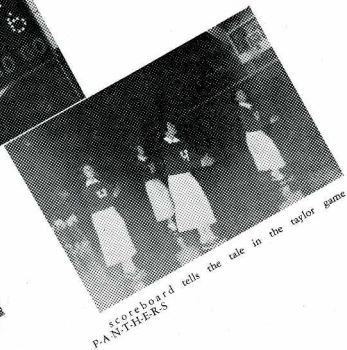


*indiana state—48,
hanover—13*

Hanover College football wound up its 1953 season against Indiana State, when the Panthers were rolled, 48-13 by the Sycamores at Terre Haute. Indiana State, experts with laterals and end runs, ran up a 35-point lead over Hanover going into the third quarter, before a Springer to Liddle pass broke the ice for Hanover. The Hilltop eleven got six more points in the fourth period when Brown crossed the double stripe.

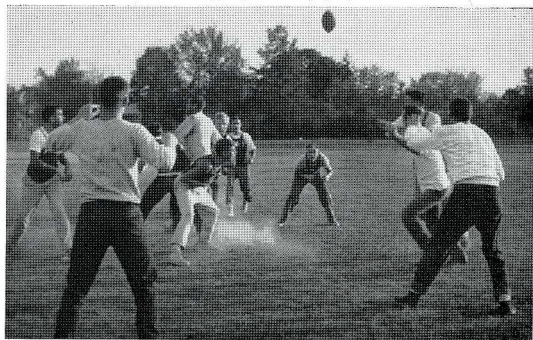


all's calm on the bench?



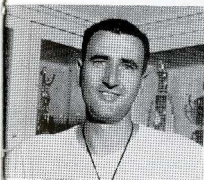
scoreboard tells the tale in the taylor game
P-A-N-T-H-E-R-S

we had a stepped-up intramural program, too

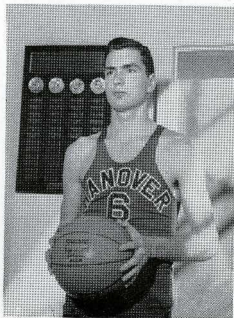


basketball

Hanover's new hardwood coach this year was Mr. Glenn Bonsett, who entered into his first year of college coaching. Considering the young team, coach Bonsett turned in an admirable performance, with chances next year even better. Captain this past season was Joe Landis, a varsity player for his past three years, who held down his forward position very capably. In addition, the most valuable player award went this year to "Mick" Hennegan, the only senior on the squad.



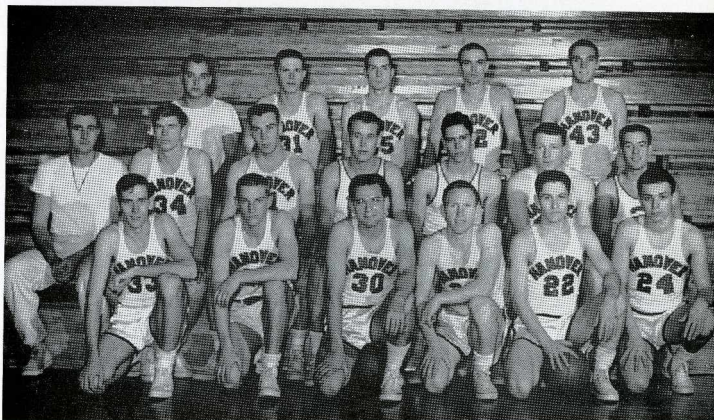
Head Basketball Coach
Glen Bonsett



Captain Joe Landis

A mediocre season pretty well describes Hilltop cage activity for this past year. A 6 won and 6 lost record in the conference put them in fifth place, with an overall season's record of 10 wins and 9 losses. Undoubtedly, the high point of the season was the defeat of Indiana Central, which put the Greyhounds down to a second place standing behind H.C.C. champs Manchester. Winning berths on the all-conference team of ten men were Joe Landis, and pivot ace John Morris, a freshman.

Top Row: Asst. Coach D. Bullington, H. Cutshall, J. Landis, J. Leap, J. Morris. Second Row: Coach G. Bonsett, L. Liddle, D. Johnston, B. Ortlieb, D. Lewis, W. Patton, E. Wells. Bottom Row: H. Stewart, L. Willen, D. Kile, M. Hennegan, A. Lickliter, J. Hutchins.



hanover—82, bellarmine—57

The Panther's nineteen game 1953-'54 hardwood schedule opened with a bang, when they defeated the Bellarmine Knights on the Lynn Hall boards. Freshman center John Morris led the Hanover cause with 21 points, followed by Johnston and Lickliter with 12 each.

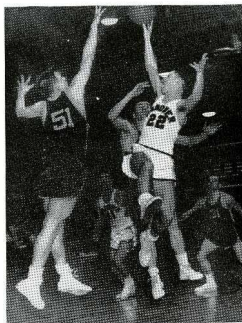
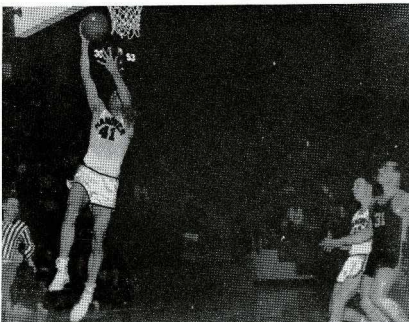
hanover—69, ball state—68

Hanover's next game was at Muncie, against a tough and determined Ball State five. It wasn't until after a strong fourth quarter drive that the Panthers edged out their one-point margin. Johnston led the scoring with 17, followed by four other Panthers in the double figures.

hanover—81, anderson—70

Coach Bonsett's determined Hilltop fivesome made it three in a row when they annexed their first H. C. C. victory at the expense of Anderson College. After a shaky start, Hanover surged ahead to lead for the rest of the game. Morris led the home scoring with 16.

Johnston all alone on a crisp shot (Anderson game)



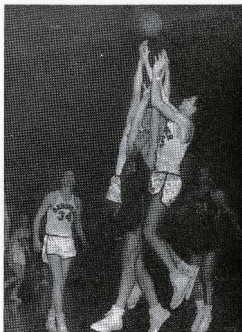
Lickliter tried a twisting shot (Anderson game)

xavier—80, hanover—60

The local netters stepped up into the big time in their fourth outing of the season, losing to a very tough Xavier, Ohio, five. Morris and Landis paced the Panthers in a second half that saw Hanover outscored by only three points.

hanover—81, earlham—72

The defeat of arch-rival Earlham ran the Hanover net record up to four wins out of five starts, in addition to keeping their loop record clean with two wins. Although a close tilt all the way, the Quakers were never ahead, and the usual balanced Panther attack was led by Morris, Landis, and Springer, at 20, 18, and 17 points respectively.



Six arms but only one ball (Anderson game)

de pauw—82, hanover—74

The trip to DePauw saw the Hilltoppers defeated by a 10-point margin. After leading 36-34 at the half, the Panthers turned cold, and coupled with an amazing fifty per-cent shooting from the field, the Bengals were hard to stop. Moreover, the score does not indicate the true picture of the game—Hanover trailed by only two points with only a few minutes remaining. Morris paced the home team with 28.

louisville—94, hanover—55

Hanover bit off a little more than they could chew, when they tangled with the University of Louisville in the Armory at Louisville. The Panthers were behind from the beginning, and were never a threat to the Cardinals. Landis and Morris led the Hilltop cause with 14 and 17 points, respectively.

manchester—73, hanover 65

The Panthers lost their first H. C. C. game of the year in three starts to the benefit of conference champs Manchester on the Spartans' home floor. Manchester jumped ahead after the first quarter, and were never behind, although the balanced Panther attack led by Morris, Johnston, Federspill, and Springer doubled them in scoring the last quarter.

taylor—80, hanover—74

Taylor's Trojans handed Hanover their second straight loop defeat on Taylor's floor, in a nip and tuck battle all the way. Although the Panthers outscored them from the field, 28 successful free throws by the Trojans told the tale.

hanover—83, franklin—74

Hanover ran their conference record to 3 wins and 2 losses after defeating the Franklin Grizzlies in a ragged tilt. Each team was hot in different quarters, and for one of the very few times thus far, Panther high scoring was centered around one player, that being Joe Landis, who collected 26.

Landis tries a short one against Earlham



manchester—66, hanover—58

Hanover's second meeting with Manchester was almost an exact duplication of its first game, with the Panthers again falling by eight points. Hanover started strong, leading 15-13 at the half, but couldn't keep up with the destined Spartans, and trailed 44-53 at the end of the third stanza. Morris and Landis led with 19 and 15 points, respectively.

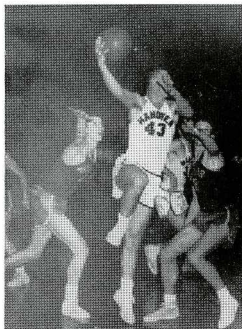
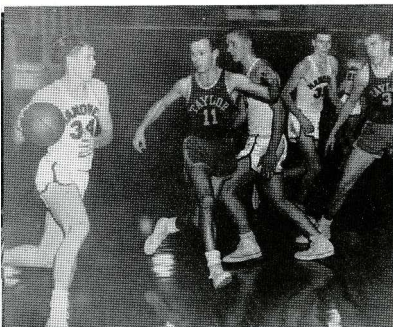
indiana central—116, hanover—85

Powerful I. C. proved to be too much for the Panther netters, who just couldn't keep up with the torrid offense the Greyhounds furnished. After the first quarter it was hardly any race at all. As usual, the Panther big two, Landis and Morris, paced Hanover scoring with 28 and 22, respectively.

hanover—96, taylor—84

In what very possibly was their best game of the year, Glenn Bonsett's Panther five made short work of Taylor University, the Hoosier Conference Champions for the past two years. Even though Hanover took the lead after the opening minutes, and never lost it, it was as exciting a ball game as any Panther fan would want to see. Big John Morris outscored Trojan Forrest Jackson, the state's leading scorer, 31 points to 30. Landis and Liddle followed with 25 and 18 points.

Here comes Liddle around the horn



Morris tries a hook in the Taylor game

earlham—72, hanover—64

An exact about face was performed at Earlham three nights later when the cellar dwelling Quakers upset the Panthers by a sizeable eight-point margin. Although leading at the end of the first stanza, and outscoring Earlham again in the third period, it wasn't enough to do the trick. Landis led the scoring with 25, with center John Morris collecting only 2 points, by far his lowest of the year.

hanover—86, centre—56

Centre College of Kentucky visited Hanover next, only to fall by a big twenty-point margin. After a sluggish first half, which saw the Colonels one point to the good, Hanover came back with a big fourth quarter surge to win. Morris and Landis led the scoring with 24 and 23 points, respectively.



golf

For the fifth straight year in a row, Hanover won the Conference golf championship, played this year at Lake Shore Country Club in Indianapolis, winning over second place Indiana Central by five points. With an eleven meet schedule crammed into a month's time, the Panthers linksmen found such non-conference foes as Louisville and Xavier far too tough to handle, and also floundered in the annual Shelbyville, Ky. and Little State Tournaments. But this year's team, minus the "fabulous four" of the last four seasons, picked up enough steam as the season progressed to annex that vital league crown.

Univ. of Louis. 24 Hanover 3
Shelbyville, Ky. Tournament—

(Hanover last with 1020 points
Medal Play)

| | | | |
|-----------------|-----|------------|-----|
| Hanover | 12½ | Franklin | 8½ |
| Univ. of Louis. | 22½ | Hanover | ½ |
| Hanover | 10½ | Bellarmine | 7½ |
| Hanover | 16½ | Bellarmine | 10¼ |
| Hanover | 18 | Ind. Cen. | 8 |
| Univ. of Louis. | 14½ | Hanover | ½ |
| Xavier | 17 | Hanover | 1 |
| Franklin | 14 | Hanover | 4 |

Little State at Terre Haute (Hanover
last place, with 669 points)

Hanover 18 Anderson 0

Conference Meet and Indianapolis
(Hanover first with 665 points)

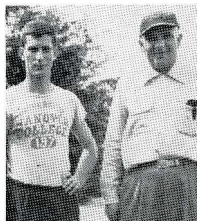


Captain Shaky Lawson, Coach Dupre.

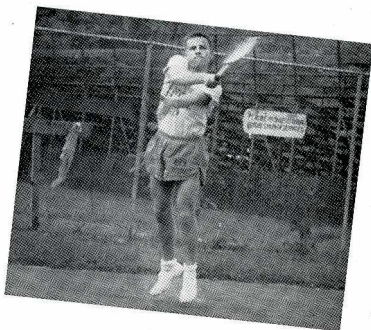
B. Maddux, D. Davis, R. Lawson, T. Kreitzman, J. Sturges, K. Lee.



| | | | |
|------------|---|-----------------|---|
| Hanover | 6 | Indiana Central | 1 |
| Wabash | 7 | Hanover | 2 |
| Hanover | 7 | Taylor | 0 |
| Hanover | 6 | Earlham | 1 |
| Xavier | 7 | Hanover | 0 |
| Hanover | 5 | Manchester | 2 |
| Bellarmine | 7 | Hanover | 0 |
| Hanover | 6 | Franklin | 1 |
| Anderson | 5 | Hanover | 2 |



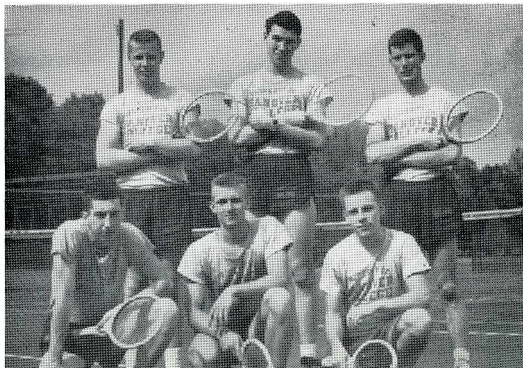
Captain Bud Leonard, Coach R. F. Struck

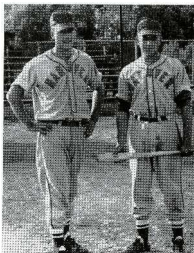


tennis

With practically the same team that last year garnered a third in the Hoosier Conference, this year's netmen, headed by captain Bud Leonard, upped their position to second. Playing a nine game schedule, which included six H. C. C. foes, the racketmen posted all their five wins against loop foes, only to lose the last conference game they played to Anderson, 5-2, whose Ravens went on to the championship. Leonard is the only senior on the team, making chances next year again very good.

Top Row: J. Ziszow, J. Snyder, K. Leonard. Bottom Row: P. Diller, R. Burger, J. VanHorn.





Baseball Co-Captains J. C. Lytle and Danny Bullington

baseball

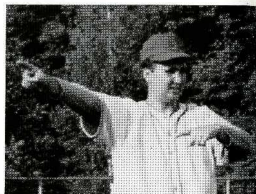
Under the able tutelage of Coach John Molodet, serving his second year as Panther baseball coach, and captained by J. C. Lytle and Danny Bullington, the Hanover diamondmen played a busy 20 game schedule, winning 6 and losing 14 in regular season play, out of which they broke even with a 6 and 6 record in the conference. Four starters were lost this year from the lineup, with one of these, senior Rex Wells, winning the Most Valuable Player award. The record gave Hanover a tie for third in the conference, which, coupled with the efforts in the other four spring sports, was not enough for the All-Sports Trophy, which went again this year to Indiana Central.

bellarmine—13, hanover—5

In the season's opener, errors and sloppy play, plus a poor playing field cost the Panthers their defeat. Szot started for the home cause, but was relieved by Sutton and Leap. A Hanover triple play was about the only bright spot of the game.

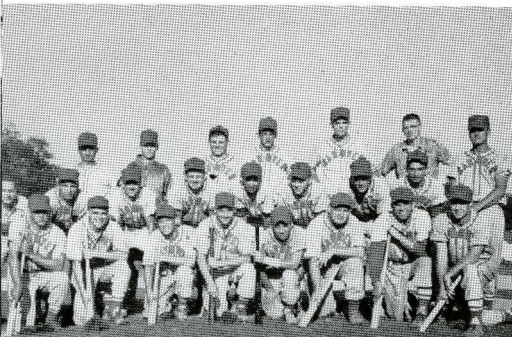
hanover—3, taylor—0; taylor—6, hanover—5

The first home game, an important D. H. with Taylor, saw a split registered. The games were close throughout, with the Trojans winning the second tilt only by virtue of several runs scored in the last few innings.



diamond Coach John Molodet

Top Row: Coach J. Molodet, A. Lickliter, C. Severs, R. Goodwin, J. Leap, J. Woods, manager, J. Lytle. Second Row: P. Joseph, manager, T. Pucher, J. Petrie, L. Dugle, S. McQuiston, R. Sutton, B. Szot, F. Casaceli. Bottom Row: D. Bullington, R. McClure, H. Stryer, G. Hill, S. Liggett, M. Forsythe, D. Kile, R. Wells.



i. u.—9, ban.—0; i. u.—23, ban.—1

The first game following Spring Vacation saw the Panthers step far out of their class, when they traveled to I. U. to lose both games of a twin bill there. Szot went the distance in the first one, and the Panthers battery could do no good against the Hoosiers. In the second tilt, things became even worse, and I. U. ran wild. Coach Molodet used four pitchers in this game.

hanover—7, i. c.—3

The First H.C.C. outing for Hanover occurred on Morgan Field, where I. C. fell to the Panthers, with pitcher Szot giving up no earned runs. I. C. did not score until the 8th frame.

banover—5, anderson—3
anderson—4, banover—3

Another split bill resulted in the Anderson double-header, but both games were close ones. Although Hanover could only muster 4 hits in the first tilt, Raven errors spelled their defeat. In the second game, a reversal came about when Anderson, with only 4 hits from hurler Leap, capitalized on Panthers errors.

manchester—4
banover—3
manchester—11
banover—1

Down from their first place standing came the Panthers when they met up with Manchester, dropping both D. H. games. The local nine were weak in both games, although Szot pitched a 4 hitter in the first bill. Wells collected 4 of the 10 Hanover hits in the two games.

u. of l.—17, ban.—5

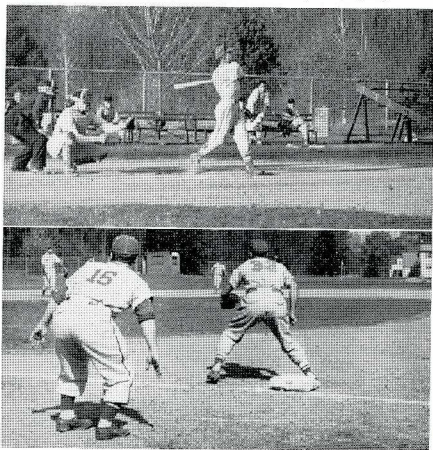
The diamondmen's first meet with always-tough U. of L., held on the home field this time, saw the Panthers suffer another overwhelming defeat at the hands of the Cardinals. Six runs by University of Louisville in the sixth, and nine more rallies in a big 8th inning iced the game.

banover—11, earlham—3
banover—8, earlham—5

Two all-important victories for the conference standings were placed on the books for the Panther cause when Earlham's Quakers fell before the steady pitching of Szot, Sutton, and Leap on the Hilltop diamond. The first match went fairly smoothly, and the outcome was hardly ever in doubt. In the nightcap, 4 big runs in the sixth inning put the Panthers out in front to stay, after a shaky start for the first five frames that could have given the game to anybody.

Top picture: Bullington connects against Taylor

Bottom Picture: looks like a close one at first (Louisville game)



i. c.—5, hanover—2

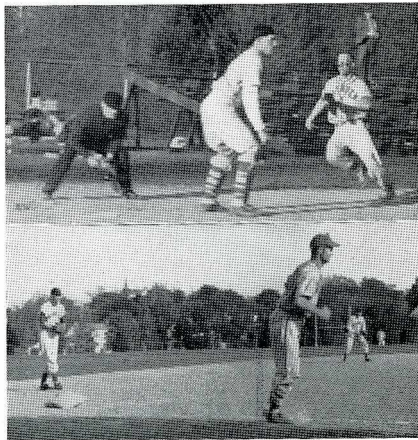
The Greyhounds reversed their earlier defeat at the hands of the Hanover nine, and mainly through the results of unearned runs, were able to eke out a 3-point winning margin over Panthers hurler Szo. Four of I. C.'s five runs came in the 4th frame.

wabash—6, hanover—4

The Hilltopper losing streak continued its ways with a visit from the Little Giants on the Morgan Field diamond. Sutton and Pucher tried to put out the fire during the first three innings, only for Lickliter to come in and pitch shut-out ball the rest of the way, in a game which saw Wabash run up an early score.

Top Picture: Liggett races for home (Taylor game)

Bottom Picture: will Wells steal home?



xavier—8, hanover—3

A visit to Xavier still told the same old tale for the Panthers, when they lost by a decisive 5-point margin. Szo. again went all the way for the home cause. Bullington scored all of Hanover's three runs.

u. of l.—7, hanover—4

The Panther's second meeting with U. of L., was a good tight game all the way, until the Cardinal's Noble rapped a double in the eighth with a 4-4 tie and the bases loaded to score all three men. Hill took care of 2 of the Hilltop runs. Szo. went the distance for Hanover.

*franklin—13,
hanover—5
hanover—7,
franklin—5*

The final outing against a conference foe was a doubleheader that resulted from two previous postponements with the Grizzlies. The first game came to Franklin only by virtue of a big eight run output in the final inning. The second game saw Hanover work in 7 runs in the third inning and hold it. Leap was credited with the win, which broke an 8 game losing streak.

*xavier—13,
hanover—1*

The twentieth and final game of the year saw Hanover badly beaten by a very classy Xavier Musketeer nine. Pucher started for the Panthers, but was relieved in the second inning. Liggett knocked in the single Hanover run.



captain Allen Allie

hanover—92, bellarmine—39

The 1954 season got off to a flying start when the Panthers handed Bellarmine a big 53 point defeat at Morgan Field. Hutson, Powell, and Ward were double winners for the home cause.

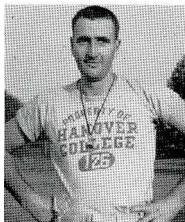
wabash relays—hanover 5th

Hanover's first visit to the highly-rated Wabash Relays netted the home outfit a fifth place, behind Wabash, James Millikin, Carroll, and Beloit. The Panthers won places in the discus, high-jump, shot put, and 440 shuttle.

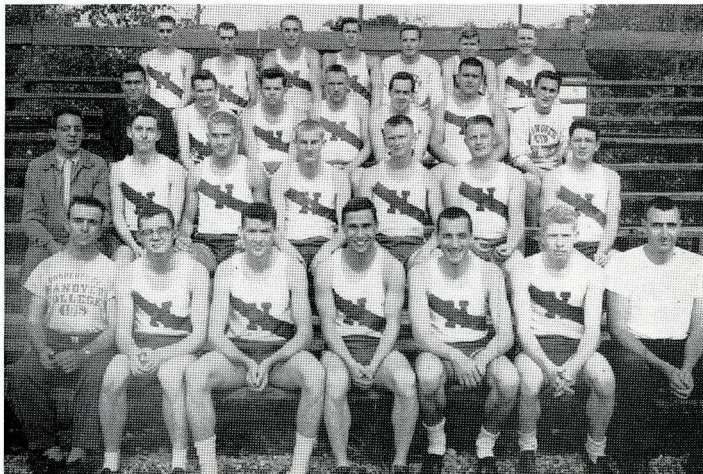
Top Row: T. Bohlsen, H. Stewart, J. Morris, D. Ward, L. Powell, L. Lytle, G. Davis. Third Row: J. Purvis, Assistant coach, J. Rehm, R. Lynn, J. Sroops, J. Orton, T. Hudson, E. Thompson. Second Row: H. Conrad, manager, M. Hutson, R. Casten, L. Willen, R. Busse, W. Seese, R. Troyer. Bottom Row: R. Gillespie, manager, J. Hawley, R. Gray, D. Dietel, A. Allie, D. McNeely, Coach G. Bonsett.

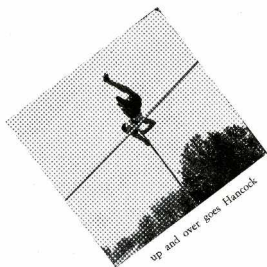
track

Panther cinder activity this spring found a lot of new faces successfully filling the shoes of last year's seniors, and doing the job well. The new cinder mentor this year, Glen Bonsett, capably assisted by Captain Allen Allie, brought the squad through a steady improvement, which climaxed in the vital H.C.C. meet at Manchester. Prospects next year are excellent for the relatively young thinlie crew. Winning the MVP award this year was freshman John Morris, who scored 80¼ points during the season.



track coach Glen Bonsett





rose relays—hanover 2nd

Three weeks later, less intensive competition in the annual Rose Relays gave Hanover a second behind Earlham, with the harriers placing in every event, save the mile run, once again being particularly strong in field events.

*hanover—85½, anderson—44,
franklin—42½*

Two loop foes were featured in the April 28 meet at Hanover, but the Panthers proved to be poor hosts, winning by almost 40 points over 2nd place Anderson. The high point of the meet came when Freshman Tom Bohlsen broke the mile run record of 4:44 set in 1949 with a fast 4:42.0 time.

Top Picture: Casten to Willen for a first in the 880 relay

Bottom Picture: it's a fight for the inside track on the first turn

hanover—92, i. c.—44

Hanover grabbed ten easy firsts, and two ties for first when they easily disposed of I. C. at the Greyhound track. Morris grabbed firsts in the javelin, shot put and discus to pace the Hilltop harriers.

*kentucky—69, cincy—46
hanover—44*

Big time track was the rule at Morgan Field on Family Day, May 8th. Although placing last in the meet, the Panthers were barely edged by UC, and did get one first—the mile relay, which was the final event of the meet, and a fitting climax to an excellent day for the Hanover track fan.

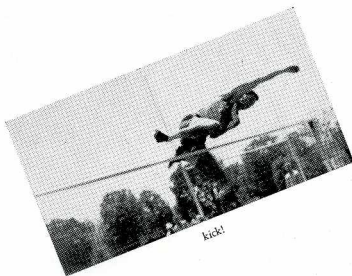


earlham—71, banover—59

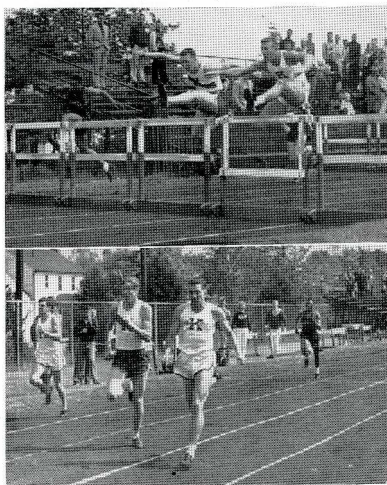
Defending conference track champs Earlham still were tough enough to edge out Hanover at the Quaker track, in this "pre-conference" meet indicator. Things went worse than usual for most of the team, when they failed to place in the mile run or 220 yard dash. But Hanover's highly-rated mile relay four came through with another time within four seconds of the school record.

little state—banover—9th

Only seven men broke into the Little State meet scoring column, held this year at Ball State, and as a result, garnered 5 2/7 points. The Panthers won berths in four events, and unofficially broke the Hanover mile relay record.



Top Picture: Curry and Davis neck and neck in the highs
Bottom Picture: Liddle is nosed out by inches



*boosier conference
meet banover 2nd*

Coach Bonsett's thinlies hit their peak in almost every department on May 22, date of the Hoosier Conference Track-meet. Although losing out to Earlham for the second time by a scant 8.75 points, they were more than 20 points above third place I. C. Every man was keyed up to the point where the spirit of Hanover's competition left absolutely nothing else to be desired. Although getting only 4 firsts, previously unavailable depth in most of the other events helped the Hill-toppers most. Morris threw the discus 134' 3 1/4" for a new conference and school record, while Tom Bohlson broke his own mile record set earlier with a 4:38.6 time.



out of the field and onto the track

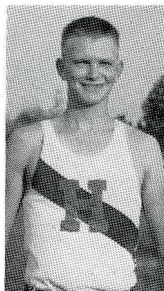
Hanover's 1953 edition of Cross-Country was one that almost, but not quite, annexed its very first Hoosier Conference Championship. Playing a five meet schedule, in addition to the final Conference meet, the Panther long distance runners were able to collect wins over Anderson, Franklin, Earlham, and Indiana Central. Although falling far behind highly-rated Ball State in the triangular meet held there, the thinlies once again disposed of I. C.

In the all-important loop meet held at Earlham on October 30th, the Panther harriers were edged out by a scant four points by the host Quakers for the championship. As shown through the season, Hanover and Earlham were the two top contenders for the crown all along.

Senior Russ Busse captained this year's hill-and-dale aggregation, which was ten men strong, one of the largest C. C. teams in several years. Only Busse and John Hawley, the duo that paced the Panthers in most of their meets, will be lost this fall, making prospects for a H.C.C. championship even brighter next fall.

cross country

| | | | |
|----------------------------|----|------------|-------------|
| Hanover | 20 | Anderson | 50 |
| Hanover | 17 | Franklin | 48 |
| Hanover | 26 | Earlham | 29 |
| Ball State | 15 | Hanover | 54 I. C. 59 |
| Hanover | 17 | I. C. | 39 |
| Conference meet at Earlham | | | |
| Earlham | 50 | Manchester | 148 |
| Hanover | 54 | Anderson | 153 |
| Taylor | 63 | Franklin | 163 |
| Indiana Central | 69 | | |



cross country captain Russ'l Busse



Top Row: J. Purvis, P. Fribley, J. Earl, R. Davis, J. Rehn, Coach G. Bonsett. Bottom Row: J. Orton, R. Busse, J. Hawley, T. Bohlson, A. Lickliter, B. Bissell.

intramurals

Through the efforts of athletic director R. F. Struck, a stepped up intramural program was instituted this year, with badminton, table tennis, and horseshoes as new sports. In addition, a plaque will now be awarded each year to the organization that compiled the best overall intramural standing, and also to the organization that contributed the most men to each varsity sport, a similar plaque is given each year. Every four years a permanent trophy is awarded to the organization having the best record for both these fields. Lambda Chi Alpha won the varsity participation plaque this year with 33 points, while Phi Gamma Delta had the best intramural record with 26 points.

Top Picture; Top Row: Coach R. Hamm. Third Row: J. Massman, F. Terrell, J. Petrie, J. Sturges. Second Row: C. Lloyd, K. Kile, K. Kellan, D. Ward. Bottom Row: P. Sidney, T. Cartmel, J. Lloyd, J. Troyer.
Middle Picture; Top Row: J. Gibson, L. Irvin, J. Landis, D. Satterly, H. Stier. Bottom Row: P. Joseph, R. Scot, J. Mullarkey, R. Burger, C. Hunt.
Bottom Picture; Top Row: J. Rose, T. Palmer. Bottom Row: G. Feldman, L. Smith, R. Busse.

touch football

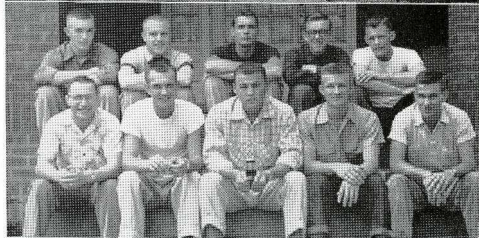
| | | | |
|------------------|-----|-------|-------|
| Winners were: | Phi | Delta | Theta |
| Standings: | w | l | tie |
| Phi Delta Theta | 5 | 0 | 1 |
| Beta Theta Pi | 5 | 1 | 0 |
| MRH Blue | 4 | 2 | 0 |
| Phi Gamma Delta | 3 | 3 | 0 |
| Lambda Chi Alpha | 2 | 3 | 1 |
| Sigma Chi | 1 | 5 | 0 |
| MRH Red | 0 | 6 | 0 |

table tennis

| | | | |
|------------------|------|-------|----|
| Winners were: | Beta | Theta | Pi |
| Standings: | w | l | |
| Beta Theta Pi | 5 | 0 | |
| Phi Gamma Delta | 4 | 1 | |
| Phi Delta Theta | 2 | 3 | |
| Sigma Chi | 2 | 3 | |
| Lambda Chi Alpha | 1 | 4 | |
| MRH #3 | 1 | 4 | |

badminton

| | | | |
|------------------|-----|-------|-------|
| Winners were: | Phi | Gamma | Delta |
| Standings: | w | l | |
| Phi Gamma Delta | 3 | 1 | |
| Lambda Chi Alpha | 2 | 2 | |
| Beta Theta Pi | 2 | 2 | |
| Phi Delta Theta | 2 | 2 | |
| Sigma Chi | 1 | 3 | |





Top Picture; Top Row: T. Cartmel, J. Lloyd, D. Ward, J. Troyer, J. Petrie.
Bottom Row: J. Hough, F. Terrel, coach, K. Keller.
Bottom Picture; Top Row: R. Wells, coach, J. Sturges, J. Massman. Second
Row: K. Kile, C. Lloyd, D. Criswell. Bottom Row: J. Earl.

horse shoes

Winners are:

Phi Gamma Delta

| Standings: | w | l |
|------------------|---|---|
| Phi Gamma Delta | 5 | 1 |
| Point House | 4 | 2 |
| Phi Delta Theta | 4 | 2 |
| Lambda Chi Alpha | 3 | 3 |
| Sigma Chi | 3 | 3 |
| Beta Theta Pi | 2 | 4 |
| Independent Men | 0 | 6 |

1st round bowling

Winners were:

Lambda Chi Alpha

| Standings: | w | l |
|------------------|----|----|
| Lambda Chi Alpha | 18 | 1 |
| Sigma Chi | 16 | 5 |
| MRH Red | 15 | 6 |
| Phi Gamma Delta | 14 | 7 |
| Beta Theta Pi | 12 | 9 |
| MRH Blue | 5 | 16 |
| Faculty | 4 | 17 |
| MRH White | 0 | 27 |

2nd round bowling

Winners were:

Sigma Chi

| Standings: | w | l |
|------------------|---|---|
| Sigma Chi | 8 | 4 |
| Faculty | 7 | 5 |
| Phi Gamma Delta | 6 | 6 |
| Lambda Chi Alpha | 5 | 7 |
| Beta Theta Pi | 4 | 8 |

bowling play-offs

Winners were:

Sigma Chi

| Standings: | w | l |
|------------------|---|---|
| Sigma Chi | 5 | 3 |
| Lambda Chi Alpha | 3 | 5 |

"a" basketball

Winners were:

Phi Delta Theta

| Standings: | w | l |
|------------------|---|---|
| Phi Delta Theta | 6 | 1 |
| Phi Gamma Delta | 5 | 2 |
| Lambda Chi Alpha | 5 | 2 |
| Sigma Chi | 5 | 2 |
| MRH Blue | 3 | 4 |
| Beta Theta Pi | 2 | 5 |
| Point House | 1 | 6 |
| MRH Red | 1 | 6 |

"b" basketball

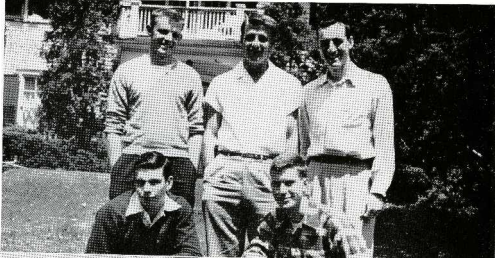
Winners were:

Phi Delta Theta

| Standings: | w | l |
|------------------|---|---|
| Phi Delta Theta | 7 | 1 |
| Phi Gamma Delta | 6 | 2 |
| Sigma Chi | 5 | 2 |
| Beta Theta Pi | 5 | 2 |
| Point House | 3 | 4 |
| Lambda Chi Alpha | 2 | 5 |
| MRH Blue | 1 | 6 |
| MRH Red | 0 | 7 |

Top Picture; Top Row: D. Steger, J. Lytle, A. Allie. Bottom Row: L. Wingate, K. Leonard.

Bottom Picture; Top Row: W. Cooper, R. Wright, J. Rose, W. Kiser. Bottom Row: D. McNeely, M. Forsyth, C. Shaw.



"a" volleyball

Winners were:

Standings:

Beta Theta Pi

Phi Gamma Delta

Lambda Chi Alpha

Phi Delta Theta

Sigma Chi

Beta Theta Pi

w 1

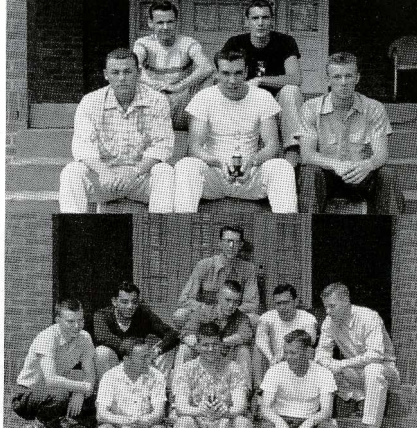
4 0

3 1

2 2

1 3

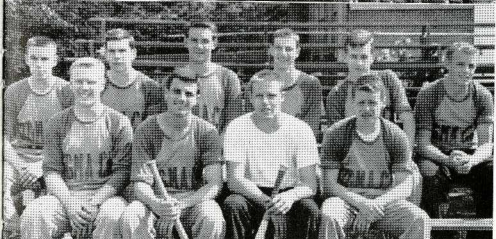
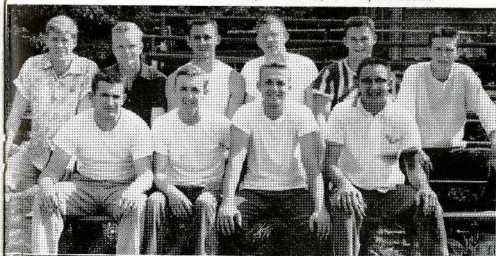
0 4



Top Picture: Top Row: J. Rehm, J. Landis. Bottom Row: J. Mullarkey, D. Johnston, R. Burger.

Bottom Picture: Top Row: M. Prime. Second Row: J. Park, A. Solazzo, J. Gibson, J. Purvis, J. Zirzow. Bottom Row: P. Joseph, J. Powell, H. Stier.

Top Picture: Top Row: L. Liddle, coach, W. Kile, J. Dawson, J. Woods, R. Shedd, H. Cuthall. Bottom Row: F. Rike, J. Edmondson, H. Bobbett, H. Conrad.
Bottom Picture: Top Row: R. Dickman, L. Wingate, K. Walker, L. Strouse, W. Hunt, D. Steger. Bottom Row: D. Sandberg, T. Katsanis, R. Knaf, B. McGeath.



softball

Winners are:

Standings:

Sigma Chi

College Point House

Phi Gamma Delta

Beta Theta Pi

Phi Delta Theta

Lambda Chi Alpha

Men's Res. Hall

Sigma Chi and Point House

w 1

5 1

5 1

4 2

3 3

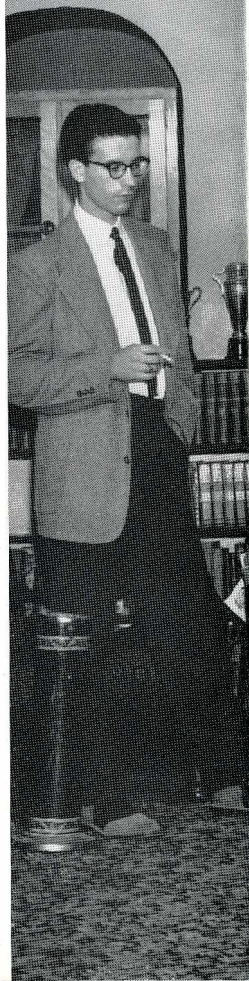
2 4

2 4

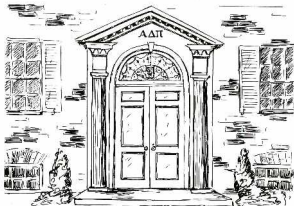
0 6

hanover organizations lead to fellowship...

New paths have replaced some old familiar ones—but these, too, have become an important part of college life. Pledging is the first step followed by a whirlwind of events leading to initiation. Cooperation and fun in working together pave the way to the fraternal organizations on Hanover's campus.







alpha delta pi

| | |
|----------------------|------------------|
| President | Nancy Johns |
| Vice-president | Luellen Simbalms |
| Secretary | Nancy Dysart |
| Treasurer | Sara Ramsey |

September of 1953 brought the year's first honor to Alpha Delta Pi—the Sorority Scholarship Cup was awarded to us for the first semester.

And then began the whirlwind of informal and formal rush parties, finally ending October 20 when thirty-seven preferences were pledged to Phi Chapter. On Homecoming Day Phi's Sally Stiles was crowned Homecoming Queen. Then the fall formal, "Beaux Artes Ball", brought a Parisian atmosphere to the Donner Hall dining room.

Christmas and Santa Claus came to the last party in the old Alpha Delta Pi house, for when Phi came back from vacation, she began Operation "Big Move", and was soon settled in her new home in the Sorority Quad. With its French Provincial furnishings and extra room, the house was a home to be proud of. Its only drawback—no telephone! This was soon to be

remedied, however, and meanwhile Phi went "Breezin' Through the Seasons" on Sorority Skit Night.

March 5 was the memorable day of the initiation of the new members of Alpha Delta Pi. Soon afterward, the new house was initiated also—to its first house dance, "Over the Rainbow".

Barb Kitchell began the A. D. spring when she was named Hanover's Cherry Blossom Queen and competed with the winners of other Indiana college contests for the state title. At almost the same time, she was awarded a \$400 scholarship from the Indiana organization, Tri Kappa.

At the Alpha Delta Pi State Day at Purdue, Nancy Johns was named the outstanding woman of Phi Chapter. Back at Hanover, the A. D.s were the proud winners of the Sorority Sing Contest.



Family Day weekend brought more singing, folk dancing, and fun along with Phi's annual Mother's Day Picnic at Clifty Falls State Park. Then, as a final event of the year, the A. D.s gave a formal candle-light campus serenade.

A. D.'s worked on all three campus publications, Nan Todd served on *Hill Thoughts*, Barbara Buckingham as editor of the *Revonah*, and Carolyn Sacksreder as co-editor of the *Triangle*. Carolyn was also on the Board of Student Affairs and president of the Choir. Lue Simbalmos and Ann Vancamp presided over Social Science Club and Hanover Players.

Various honors were conferred upon individual Alpha Deltas throughout the year. Twelve A.D.s were initiated into Alpha Lambda Delta; others were given membership in Alpha Phi Gamma and Theta Alpha Phi. Nancy Johns and Barbara Buckingham were each given Alumni Awards, and on Honors Day Nancy, our president, was presented with the Panhellenic

Senior Sorority Award. Also on Honors Day Carol Bayer received the *Triangle* editors' award, and Carol Warner was given the Alpha Phi Gamma freshman award. Two Phi seniors, Barbara Buckingham and Luellen Simbalmos, graduated Cum Laude.

Alpha Delta Pi looks back fondly on the year 1953-54—a time long to remember.

Top Row: C. Sacksreder, J. Matthew, C. Bayer, A. Vancamp, M. Herzog, N. Dysart, N. Johns, L. Simbalmos, S. Ramsey, B. Buckingham, G. Polk, L. Kelly, C. Warner. Fifth Row: S. Wall, M. Harkins, R. Kerr, J. McLure, M. Copeland, D. Lear, C. Griffin, J. Hungate, M. Gastineau, C. Hickman, M. Leslie, S. Nims, S. Lewis. Fourth Row: S. Wisdom, B. Hurley, P. Miller, E. Heckard, B. Kinefelter, E. Roy, S. Stapley, C. Conover, J. Young, N. Todd. Third Row: A. Bowie, M. Oliver, S. Stiles, J. Powers, B. Kral, B. Kitchell, B. Brower, N. Armstrong, S. Foreman, J. Osmer, N. Board, A. Herzog. Second Row: J. Seibert, S. Harter, C. Mosiman, J. Berst, G. Allen, B. Griner, Miss Fitton, J. White, K. Dunbar, J. Kroush, N. Doolen, N. Short, D. Ourler. Bottom Row: B. Bidlack, J. Sheridan, J. Harbison, G. Perry, J. Breckenridge, S. Henry, J. Bierbaum, J. Myers, B. Carter, A. Summerford, B. Little, R. Hungerford.





Phi Omicron of Alpha Omicron Pi began the year with a whirl of rush get-togethers and parties, climaxed by pledging 27 wonderful girls.

Homecoming decorations this year provided the slogan, "Panthers drag net; Quakers they get." Marie Eskew represented the chapter as our candidate for Homecoming Queen. Other first semester activities included casual discussions, meetings, and date parties.

Phi Omicron's attention this year was directed solely to the new sorority house. After four fun-packed months of Point House residence, we joined in mass movement to the new house. Although it was not finished until February, we were able to move in immediately after the Christmas holidays. 1954 will always be known at Hanover as the year of the "big move," as all three sororities moved in the same week.

One of our most outstanding social events was participation in the Panhellenic Open House. During this weekend, the chapter was visited by the national first vice-president, Nancy McCain. A house dedication was made in the presence of chapter members

alpha omicron pi

| | |
|-------------------------------|----------------|
| President | Donna Strettar |
| Vice-president | Pat Walne |
| Recording Secretary | Barbara Eskew |
| Corresponding Secretary | Jewell Dance |
| Treasurer | Barbara Kryter |

and college officials. A fitting climax to this weekend was initiation.

All members participated in "The Greatest Craze" for the sorority skit night, featuring such famous dances as the Charleston, varsity drag, and the flea hop, all under the able direction of Jo Tanner.

The spring formal dance was held in Men's Residence Hall and had as its theme, the Oriental Rose Ball. The ming trees, roses, and soft blue lights insured a good time for all.

In March we all went to Indianapolis for State Day and joined in fellowship with the other five chapters in our district.

Shirley Longnecker represented Phi Omicron as candidate for Cherry Blossom Queen.

Friday afternoons marked visits to our local philanthropy, the Madison State Hospital, and Thanksgiving and Christmas parties were given for the patients.



Another beautiful spring was introduced to Hanover as Donna Strettar, our president, was chosen to reign as May Queen. Lending to a successful Family Day weekend, members participated in a square dance and afternoon activities.

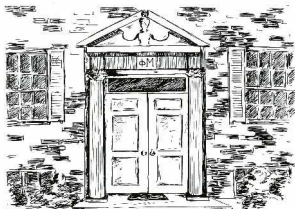
Phi Omicron's members have always been active in campus activities. Several of our girls have honored us with their membership in Alpha Lambda Delta. They are Gladys Crawford, Barbara Eskew, Joane Kasperek, Barbara Kryter (president), Pam Patterson (vice-president), Dottie Pickens (historian), and Patricia Walne (senior adviser). Doris Huber and Lora Marlette were elected to Delta Epsilon. Annie Dickey served as president of W.A.A., Donna Strettar, president of Epsilon Mu Delta, and Patricia Walne, president of Gamma Sigma Pi. We are also proud of Peggy Heberling for a lead in "Twilight Walk" and Bonnie Ortale for her leads in "Blithe Spirit" and "High Tor." Several members participated in the fall modern dance program and the spring musical for which Jan Conrad wrote the script.

As graduation time grew near, Phi Omicron seniors took several outstanding awards. Patricia Walne received the Best All Around Senior Woman trophy and the Henry C. Long Citation. Patricia Walne and Donna Strettar received Alumni Awards. Doris Huber graduated Cum Laude and Patricia Walne graduated Magna Cum Laude.

The members of Phi Omicron have appreciated the leadership and guidance of our housemother, Miss Katherine Davis, and are looking forward to another successful year.

Top Row: N. Vine, J. Weit, L. Marlette, C. Wade, B. Light, J. Rankin, L. Barnes, D. Dean, P. Laney, P. Loesdon, P. Patterson. Fifth Row: E. Barrett, M. A. Dickey, J. Dance, B. Eskew, P. Walne, C. Ortale, J. Hollensbe, B. Kryter, D. Strettar, J. Everett, N. Wasson. Fourth Row: S. Longnecker, P. Bard, J. Conrad, J. Heinritz, R. A. Smith, M. Eskew, C. Ogden, L. J. Tanner. Third Row: G. Crawford, J. Schroeder, N. Huber, J. Aufderheide, J. Kasperek, D. Pickens, S. Logan, M. Boager, S. Hersherger, S. Wharton. Second Row: J. Happ, N. Herrington, R. White, J. Fleischer, L. A. Owens, Miss K. Davis, J. Johnson, M. Shepherd, J. Schmitthorst, N. Shepherd, G. Rasmussen. Bottom Row: B. Lewis, M. E. Poe, M. A. Lotts, A. Tritipito, C. Lines, Miss M. L. Fitton, C. Forbes, N. Bowman, N. Woods, D. Radcliff, F. McKellips.





phi mu

| | |
|----------------------|------------------------|
| President | Ginny Vogel |
| Vice-president | Donna Walker |
| Secretary | Mary Elizabeth Demaree |
| Treasurer | Carol Ziegler |

Beginning the year '53-'54, Rho entertained happily the rushees with three informal parties, the theme being "Showboat". After the annual Southern Colonial Desert at the Madison Country Club, Rho was proud to announce its thirty-five pledges.

The pledges were busy throughout the year giving serenades, planning their formal dessert, which was held at the Madison Country Club, and buying a television set for our new house.

A fall serenade was given for all the fraternities by Rho.

At Christmas time the tree was secured by the

pledges for our party; baskets of food were taken to two needy families in Madison. Phi Mu also adopted a Korean War Orphan.

In January, Phi Mu moved in their new Georgian Colonial house decorated with American Provincial style furniture.

In second semester rush, Phi Mu pledged five more girls. Mary Roberts was chosen sweetheart of Indiana Epsilon of Phi Delta Theta. Mary was also Rho's candidate for Cherry Blossom Queen.

On February 27, Rho took top honors for Sorority Skit Night with the theme, "Hanover Goes to the



Rose Bowl," making this the second time in a row. March 22, twenty-five girls were initiated into the chapter.

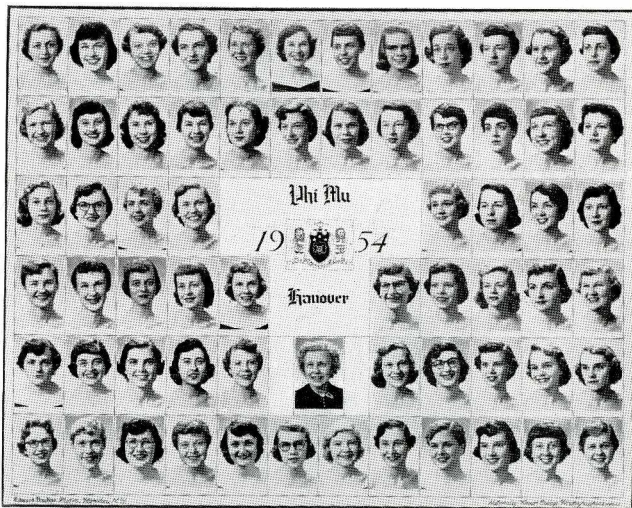
May 1, the spring formal dance was held at Men's Residence Hall with the theme "Moonlight and Roses", featuring Art Hays and his orchestra. As Family Day rolled around, Phi Mu took the annual trophy, also as prizes we won a television chair and groceries.

Rho members held major campus positions as well. Ginny Vogel served as president of the Panhellenic Council. Besides being Secretary of the Board of Student Affairs, Ginny was Chairman of the Steering Committee for Public Affairs Forum last semester. Other Phi Mus on the Steering Committee were Carol Day, Barbara Green, and Sabra Zierer. Nancy Roberts headed the Modern Dance Club this past year. Ginny

Vogel, Nancy Roberts, and Joan Templin were chosen for the May Day court.

More honors came to Rho chapter when Ginny Vogel, a senior, received one of the Alumni Awards.

Top Row: J. Circle, N. Roberts, J. Templin, C. Huffman, A. Rodman, H. Eby, P. Mauger, M. J. Steinmiz, S. Zierer, P. Hartwell, N. Tucker, B. Shepherd. Fifth Row: C. Schopp, M. Roberts, S. Gould, G. Stout, M. Demaree, V. Vogel, D. Walker, C. Ziegler, M. Maxwell, A. White, D. Neel, N. Demarce. Fourth Row: I. Vestile, C. Moore, S. Stonebraker, H. Koenig, C. Day, S. Bewley, B. Green, M. Weinke. Third Row: M. Christie, R. Haase, M. Kinney, D. Dismore, S. Jinks, C. Wilde, L. DeRiter, S. Watkins, B. Brunner, P. Christiansen. Second Row: M. Yaney, S. Frohman, B. Allen, D. Osmon, J. Black, Mrs. G. Wells, M. Huffman, D. Camenisch, J. Hawley, J. Miller, R. Diefendahl. Bottom Row: L. McDougal, J. Jones, G. Kern, K. Faust, G. Horworth, S. Hoover, J. Pearson, D. Waits, P. Phelps, J. Juillerat, C. Kanze, J. Sohn.





beta theta pi

| | |
|----------------------|----------------|
| President | Walter LaFeber |
| Vice-president | John Park |
| Secretary | Morton Prime |
| Treasurer | Robert McClure |

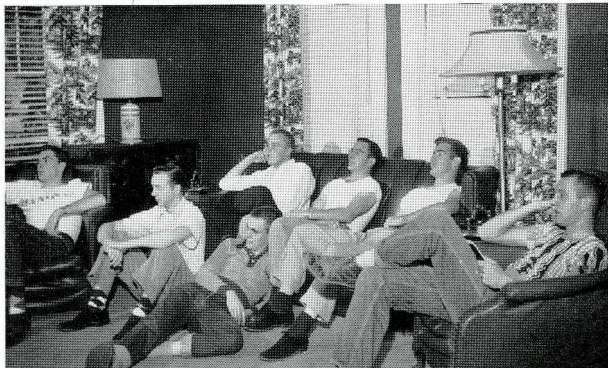
In almost every phase of College life this past year, Iota chapter of Beta Theta Pi contributed more than her share of men, and in interfraternity competition, Iota had one of its best years ever. Betas held the presidencies of the Board of Student Affairs, having two of the five student members; Glee Club, Choral Union, International Club, and Chi Epsilon Phi, as well as the editor of the *Triangle*, treasurer of the Student Council, and many other secondary positions in almost every Hanover extracurricular activity. Richard Davis, one of our graduates, was awarded one of the nine Alumni Awards given to this year's senior class.

The chapter was awarded for the third time in a row the Beta Theta Pi District XV scholarship plaque, as well as the singing cup, with Purdue, Indiana, Wabash and DePauw entering into competition. Iota's

scholarship at Hanover rose the first semester of this past year, bettering the previous semester's record, and left us only .11 point out of first place.

The Fall semester opened with the usual intensive rush, which netted the chapter nine men eligible to be pledged. In addition, three other men were initiated the first semester to more than fill the shoes left by our four graduating seniors. Featured in the rush activities were the annual Fall Formal at Donner Hall, and rush banquet at Louisville. The Christmas season brought us the annual Faculty Christmas Tea, and the Party for underprivileged children from Madison.

In athletics, Iota contributed more than her share of men having sixteen members in the Varsity-H Club, and the captain of this year's basketball team.



Among the seven College athletic programs, members could be found in every sport. Intramural-wise, Iota also completed one of its best seasons in several years. After getting a close second in touch football, the chapter went on to win championships in table-tennis, and both A and B Volleyball.

With the coming of the busy Spring season, the men of Iota found themselves as busy as ever, winning the Interfraternity Sing for the third time in four years, grabbing another Second in Skit Nite, as well as in the Family Day bike race. Two exchange house dances with Phi Gamma Delta helped to further advance inter-fraternity relations at Hanover. Another

activity of Iota was the undertaking of work projects at the various faculty homes, which netted over fifty dollars for the Church building fund. All these things, and more, helped Iota begin a second century as successful as her first.

Top Row: J. Felland, C. Lipp, R. Davis, M. Prime, W. LaFeber, J. Park, R. McClure, J. Allan, J. Mullarkey.
Fourth Row: J. Hughes, J. Rehn, R. Sutton, R. Szot, C. Hunt, R. Kersting. Third Row: J. Landis, L. Irvin, S. Satterly, D. Dietel, J. Emley, D. Johnston, P. Fribley, J. Gibson. Second Row: H. Stier, P. Joseph, D. Wedding, T. Solazzo, D. Yap, R. Myer, J. Purvis, R. Burger, J. Powell. Bottom Row: M. Hutson, D. Lindholm, J. Kreitzman, R. Roehm, R. Maddux, R. Ulerich, R. Cameron, J. Zirzow, J. Tennant.





lambda chi alpha

| | |
|----------------------|-----------------|
| President | Bob Hancock |
| Vice-president | Milt Baas |
| Secretary | Paul Diller |
| Treasurer | Tom Prendergast |

Lambda Chi Alpha continued her growth campaign this year as we formally rushed and pledged 17 men. Our motto "Build and Grow" has really become our pass-word now as we prepare to build a new house for occupancy in 1955.

Our decorations for homecoming, "On the Rocks" was a strong contender for top honors, but was edged out in the final count. The decoration was a massive light house shown with a boat of the opposing Earlham "Quakers" broken and floundering at its base in the rocks.

On Varsity-H Skit Nite the Lambdas presented "The Men Who Came for Dinner", a story with its

setting in the deep dark perils of Africa.

We were again blessed with distinctive varsity awards this year as 20 men received their letter sweaters or jackets. Among these were Jack Haines, this year's football captain and also chosen most valuable player; Glen Hawkins, president of the Varsity-H Club; Mick Hennegan, basketball most valuable player; Bob Hancock, secretary of Varsity-H; and John Morris, most valuable player in track and also the leading scorer on track team.

All in all we had eleven representatives on the football squad, seven varsity and two freshman on the basketball team, five apiece in baseball and track, and



one apiece in cross-country and tennis. This representation gave the Lambdas the intramural trophy for varsity participation.

Larry Gloyd headed the Student Council this past year. Also Larry was elected vice-president of the senior class.

On the intramural field we are riding in second place for the all-sports trophy as we won the first round bowling and have finished third in basketball, volleyball, and badminton.

Love hit the Lambdas again as four brothers became pinned and three became engaged. With the giving of their rings and pins came the tradition of tossing in the river; however, it is the beautiful and impressive serenades which follow that are remembered.

Top Row: L. Gloyd, J. Haines, P. Diller, R. Hancock, M. Baas, T. Prendergast, J. Hennegan, L. Dugle. Third Row: G. Hawkins, T. Hudson, R. Laney, J. Powell, W. Wray Jr., D. Kile. Second Row: C. McQuiston, D. Bennett, E. Lichtner, Mrs. Williams, H. Stiles, M. Real, J. Morris. Bottom Row: C. Mahoney, J. Robertson, L. Willen, J. Benson, G. Toana, L. Liddle, S. Liggett.





phi delta theta

First semester

| | |
|----------------------|-----------------|
| President | Jim Lloyd |
| Vice-president | Dun Ward |
| Secretary | Francie Terrell |
| Treasurer | Jack Schnabel |

Second semester

| | |
|----------------------|---------------|
| President | Bud Bunton |
| Vice-president | Jim Massman |
| Secretary | Tom Cartmel |
| Treasurer | Jack Schnabel |

Indiana Epsilon of Phi Delta Theta started the school year with the rush program, which was terminated with the fall formal at the Riverside Inn at Carrollton, Kentucky.

The Phis enjoyed great success along the intramural sports scene, taking top honors in football and both "A" and "B" basketball leagues. The bicycle team also showed top form as they won the annual "Little 500" classic at Family Day. This win, the second in the past three years, gave us permanent possession of

the bike trophy. The Chapter was well represented in the varsity sports with members on the football, basketball, track, tennis, and golf teams.

The spring provided work and excitement to keep the Phis well occupied. Indiana Epsilon held its First Annual Alumni Day, which was highlighted with the burning of the mortgage and the formal presentation of a plaque and sweetheart pin to "Mom" Gray, our retiring housemother. Mary Roberts was elected our sweetheart and was honored with a dance and sere-



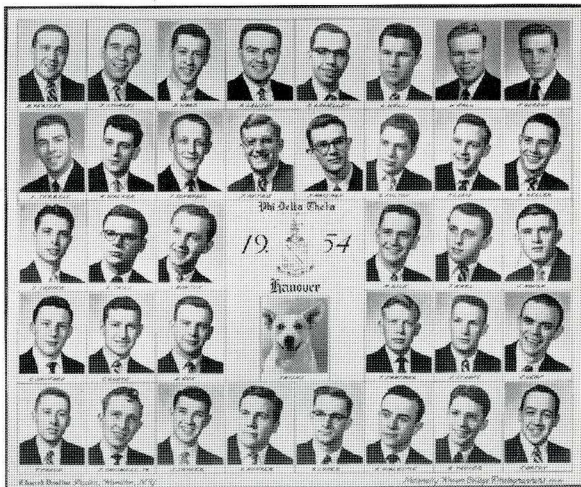
nade. The chapter, under the able leadership of Brother Schnabel, returned from our State Day with the singing trophy, making the second consecutive winning of this trophy. The Miami Triad dance was also a big success with Buddy Morrow and his band providing the music.

The Mothers' Club helped with the physical improvement of the house by presenting us with a new mirror for the mantle and a beautiful new fireplace set.

Phi Dels were active in various campus activities.

Jack Schnabel served as president of the Student Christian Association. Jack was also business manager of the *Revenab*. Shakey Lawson was captain of the golf team. President of the Science Club was Jim Massman.

Top Row: R. Peaslee, J. Sturges, D. Ward, R. Lawson, R. Lewellen, L. Wells, W. Ball, N. Gordon. Fourth Row: F. Terrell, R. Walker, J. Schnabel, J. Petrie, J. Massman, G. Fulton, J. Lloyd, K. Keller. Third Row: J. Troyer, E. Child, I. Burron, M. Kile, J. Earl, J. Hough. Second Row: C. Stanford, C. Lloyd, D. Cox, T. Cartmel, J. Stoops, J. Leap. Bottom Row: T. Proud, J. Criswell, J. Snyder, G. Hunter, B. Loper, R. Gillespie, R. Troyer, J. Otton.





phi gamma delta

| | |
|-------------------------------|-------------|
| President | Ferd Avril |
| Recording Secretary | Ralph Gray |
| Corresponding secretary | Bill Cooper |
| Treasurer | Jim Briscoe |
| Historian | Bill Kiser |

In March the Fijis gained national recognition when the chapter was awarded the Jordan Cup for the highest scholarship in the fraternity. We are the only chapter in the history of the fraternity who has won this award twice in succession.

In the past year the Fijis of Hanover have again been well represented in varsity sports. Tau placed eleven men on the football team. Dick Casten and Dick Dearduff were on the All-Conference team. Danny Bullington was assistant basketball coach, and two men were on the team. Two men were on the cross-country team, six men on the baseball team, eight on the track team, and one on the tennis team.

In extracurricular activities the Fijis held down the following positions: Dick Casten as president of the senior class, Jim VanHorn as president of freshman class, John Hawley president of Alpha Phi Omega, Dick Casten president of interfraternity Council, Ferd Avril as president of the Band, president of Junior Interfraternity Council, Bruce Bowden as assistant business manager of the *Triangle*, Ted Palmer as chairman of the steering committee of the Public Affairs Forum, Jim Brown as treasurer of the Student Christian Association, secretary-treasurer of the Varsity-H club, and several who took part in school plays.



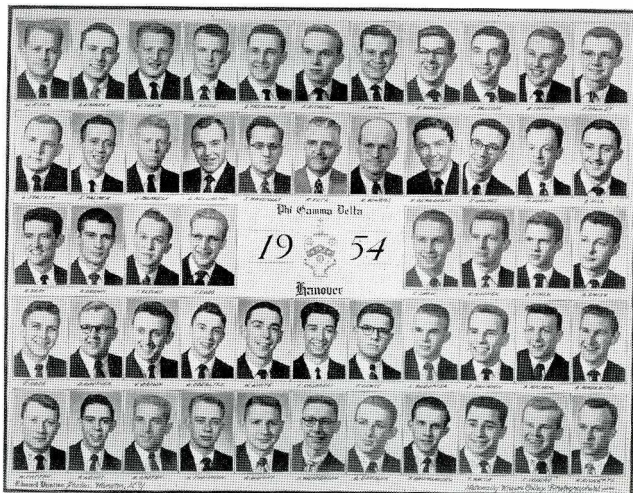
During the past year nineteen men were added to the rolls of those who wear the black diamond.

The Fijis gave a fall formal and the annual costume Fijis Island Dance, when the house was turned completely to a south sea island atmosphere. Among various house dances this year, we cooperated with the Betas for two dances.

Fijis seniors were awarded various honors. To Dick Casten went the Intrafraternity Council trophy as well as an Alumni Award. John Hawley received an Alumni Award and graduated cum laude. The valedictorian of the senior class was Ed. Whitney who graduated magna cum laude.

As the year comes to an end, the future looks bright for continued success of Tau chapter of Phi Gamma Delta.

Bottom Row: W. Patton, R. Lewis, R. Casten, K. Thompson, R. Wright, D. Henderson, R. Goodwin, J. Baumgartel, T. Nacca, C. Severs, G. Ricketts. Fourth Row: J. Rose, D. Kastner, J. Brown, D. Goerlitz, W. White, F. Casaceli, J. Lewis, L. Kleopfer, J. Van Horn, T. Pucher, B. Pikoraitis. Third Row: R. Gray, R. Brown, J. Voyles, E. Elds, C. Shaw, R. Machek, R. Tyner, R. Smith. Second Row: L. Forsyth, E. Palmer, D. McNeely, D. Bullington, J. Maysilles, R. Kutz, R. Bowers, R. Dearduff, J. Holmes, M. Norris, G. Hill. Top Row: W. Kiser, E. Whitney, W. Seese, R. Busse, G. Feldman, F. Richert, F. Avril, B. Bowden, J. Briscoe, B. Cooper, J. Hawley.





sigma chi

First semester

| | |
|----------------------|----------------|
| President | Allen Allie |
| Vice-president | Bill Fisher |
| Secretary | Clarence Zak |
| Treasurer | Warren Barnett |

Second semester

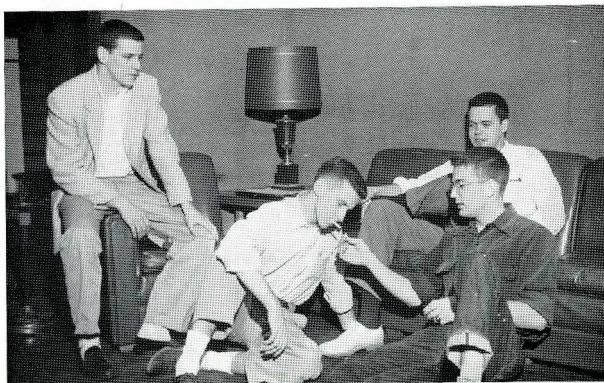
| | |
|----------------------|----------------|
| President | Allen Allie |
| Vice-president | Bob Kraft |
| Secretary | Dick Hendricks |
| Treasurer | Warren Barnett |

The 1953-54 school year has proved a busy one for Chi Chapter, but at the same time rewarding in many ways. Leading off in the fall was our varied rush program which resulted in fifteen fine new brothers. The highlight of our fall social season was the Sweetheart Dance and the crowning of Connie Hilton, who is pinned to Allen Allie, as our chapter sweetheart.

Two of Chi's proudest awards are for winning the Homecoming Decorations Trophy for our conception of "3-D", and for winning Varsity-H skit nite with "Circus Galore". Both of these trophies were for the second year in a row.

Scholarship is our watchword this year, for we are now top-ranking Sigma Chi chapter in the nation. The President's Cup is now resting on the mantel for first semester. Individual awards this year have gone to Norm Lee in physics, Dave Hosler in mathematics, essay oratory award to Carl Geider, and an essay award to Gene Hinds.

Chi is represented well in campus citizenship. Our two class presidents are Bob Dulaney, junior, and Karl Walker, sophomore. Karl was also King Koed this year. Bob Brewer is vice-president of that important governing body, the Student Council, and on the Board of student Affairs. Lee Lashbrook is president of the Men's Residence Hall Dorm Council.



In dramatics, Lee Lashbrook had the male lead in "Blithe Spirit," and appeared in several other productions. Bill Hunt was active on the Public Affairs Forum Steering Committee, while Gene Hinds was vice-president of the Social Science Club.

Chi men participated in every varsity sport and we had three captains and a coach, also. Allen Allie was captain in track, Bud Leonard in tennis, J. C. Lyttle acted as co-captain in baseball. Byron Elliot was the coach of Hanover's newest sport, wrestling. On the

intramural scene, we won second round bowling and tied for first in softball.

Top Row: C. Zak, G. Hinds, J. Andersen, D. Hendricks, A. Allie, R. Kraft, J. Barnett, J. Lyttle, C. Geiler, K. Leonard. Fourth Row: W. Fisher, W. Vamos, E. Thompson, R. Lauer, R. Dulaney, R. Gilmore, M. Lindquist, B. Elliott. Third Row: J. Barnett, R. Brewer, J. Wingate, R. Lynn, T. Katsanis, J. Newton, W. Hunt, D. Hosler, B. McGeath, A. Strouse. Second Row: D. Steger, G. Davis, D. Steiner, R. Dickman, N. Lee, S. Washburn, L. Corzine, W. Lashbrook, L. Powell, K. Walker, J. Hutchins. Bottom Row: J. Stanley, P. Lee, B. Ortlieb, A. Schrock, D. Sandberg, L. Smith, D. Grim, R. Belter, T. Bailey, H. Foltz, J. Curry.





hanover independent women

Looking back through our Memory Book for the year, we find many activities which have made lasting impressions.

Informal rush with memories of lots of work and fun is followed by souvenirs from birthday parties, teas, and informal desserts. Successive pages reveal enjoyment from movie excursions, picnics, and discussions with other Independents. We once again loomed high in scholarship as has been our tradition to achieve the coveted cup.

Yes, our Memory Book is filled with many pleasant recollections of a wonderful year.

Top Row: B. Dean, R. Riley, D. Guthrie.

Bottom Row: E. Guthrie, M. Hiatt, N. Wardwell.

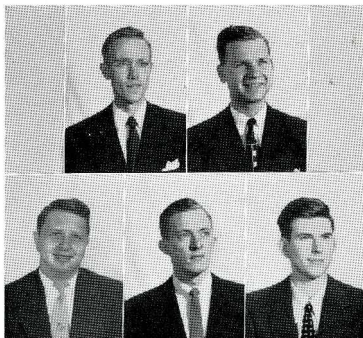
hanover independent men

This year we were active both locally and on the off-campus level.

At Hanover the members actively participated in the Choir, theatre, and the Student Council.

A great deal of our time and energy was spent working with the National Independent Students Association. Members attended the regional convention at Drake University in February. During spring vacation one of our members attending the national convention attained a high status in the organization.

A joint meeting was held with the Independent Women of Hanover and the Independent Women of the University of Louisville last spring.



Top Row: D. Bailey, P. Moffett.

Bottom Row: J. Hall, J. Mahler, C. Hall.



Top Row: E. Fisher, O. Payne, M. Spencer, P. Blackwell.

Bottom Row: A. Luther, S. Berry, N. Ireland, M. Hull.

unorganized students

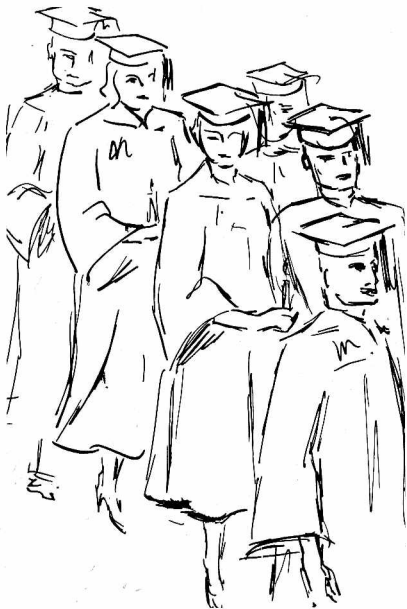
Top Row: D. Hook, N. Richmond, M. Ardjomand, J. Dalton.

Bottom Row: N. Coswell, J. Largent, S. Atreewongse, S. Kemp, B. Mater.



hanover diplomas lead to success

The paths of seniors have led to varied and specialized fields in four years. They result in more than just a diploma at the end of the Hanover walk leading to graduation in June. When the Hanover graduate starts on a new journey, he is not alone or unguided. He takes with him the best that this college can offer—the Hanover way of life.



SUPPLIES



Supplies and Outdoor Supplies

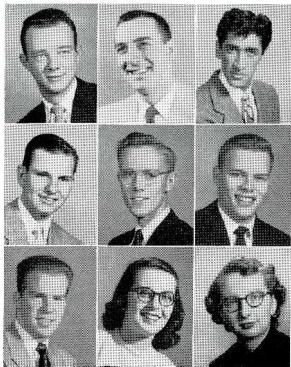
Lipton RIGHT

Double the liquid double the...

100% pure, 100% natural
 100% pure, 100% natural
 100% pure, 100% natural
 100% pure, 100% natural

3.50
 2.50
 1.50

seniors



JAMES M. ALLAN, Morris, Ill.; A.B.; Northern Illinois State Teachers College, 1; Beta Theta Pi, V. Pres. 3; Science Club 3, 4, Alpha Phi Omega.

ALLEN J. ALLIE, Ionia, Mich.; A.B.; Sigma Chi, Pledge Trainer 2, V. Pres. 3; Pres. 4; Science Club 3, 4; Football 1; Track 1, 2, 3, Captain 4; Intramurals 1, 2, 3, 4; Varsity H Club 2, 3, 4; Dorm Council 2, Alpha Phi Omega.

MANOUTCHER ARDJOMAND, Kerman, Iran; A.B.; International Club 2, 3, V. Pres. 4; Intramurals 2, 3; Dorm Council 2, 3; Student Council 3, 4.

FERDINAND AVRIL, Cincinnati, Ohio; A.B.; University of Michigan 1; Phi Gamma Delta; Band 1, 2, 3, Pres. 4; Orchestra 1, 2; Intramurals 1, 2, 3, 4; Alpha Phi Omega.

DAVID S. BAILEY, Indianapolis; A.B.; Hanover Independent Men, V. Pres. 3; Pres. 4; S.C.A. 1, 2, 3; Chi Epsilon Phi 1; Deputation Teams 1, 2; Men's Glee Club 1, 2, 4; Choir 1, 2, 3, 4; Choral Union 3, 4; Revonah 1, 2; Student Council 3, 4.

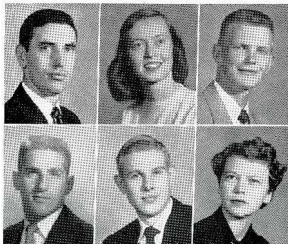
WILLIAM L. BALL, Austin; A.B.; Phi Delta Theta; Social Science Club 2, 3; Intramurals 1, 2, 3.

JOSEPH WARREN BARNETT, Fort Wayne; A.B.; Sigma Chi, Treas. 4; S.C.A. 1, 2; Intramurals 2, 3, 4.

CAROL BAYER, Fort Wayne; A.B.; Alpha Delta Pi, House Mgr., 4; Social Science Club, Publicity Chairman 4; Triangle 1, Ass't. Business Mgr. 2, Business Mgr., 3 & 4; Inter-Residence Council 3, Pres. 4; Alpha Phi Gamma, V. Pres. 3; Triangle Editors' Award 4.

JANET SUE BOYLE, Muncie; B.S.; Ball State Teachers College 1, 2; Alpha Omicron Pi; S.C.A. 4; W.A.A. 3, 4; Dorm Council 4; Epsilon Mu Delta.

i have always found hanover's weather consistent...



JAMES BRISCOE, Milltown; B.S.; Phi Gamma Delta; Intramurals 2, 3, 4; Student Council 3, 4.

BARBARA BUCKINGHAM, Union City; A.B.; Alpha Delta Pi, Activities Chairman 4; Cum Laude; Social Science Club 2, 3, 4; PAF 1, Steering Committee 2, 3, 4; Revonah, Art Editor 2, Ass't. Editor 3, Editor 4; Triangle 2, 3, 4; Alpha Phi Gamma; Pi Gamma Mu; Alpha Lambda Delta; Gamma Sigma Pi; Assembly Planning Committee 2; Mademoiselle College Board 4; Alumni Award; Alpha Lambda Delta Award.

RUSSELL BUSSE, Rising Sun; B.S.; Phi Gamma Delta; Track 1, 2, 3, 4; Cross Country 1, 2, 3, 4; Varsity H Club 1, 2, 3, 4.

RICHARD CASTEN, LaPorte; B.S.; Phi Gamma Delta, Pledge Trainer, 3; Football 1, 2, Most Valuable Player 3 & 4; Track 1, 2, 3, 4; Intramurals 1, 2, 3, 4; Varsity H Club 1, 2, 3, 4; Interfraternity Council 2, 3, Pres. 4; Gamma Sigma Pi; Senior Class Pres.; Alumni Award; Interfraternity Trophy.

WILLIAM COOPER, Campbellsburg; A.B.; Phi Gamma Delta, Corresponding Sec. 2 & 3; Science Club 1, 2; Social Club 1, 2, 3, 4; PAF 1, 2, 3, 4; Pan-Linguist Club 1, 2; Baseball Manager 3; Intramurals 1, 2, 3, 4; Pi Gamma Mu 3, 4; Gamma Sigma Pi.

NANCY R. COSWELL, South Bend; A.B.; S.C.A. 1, Outreach Chairman 2, Sec. 3; V. Pres. 4; Delta Kappa Chi 1, 2, 3, 4; Deputation Teams 1; Modern Dance Club 3; May Day Program Chairman 2 & 3.

MARY ELIZABETH DEMAREE, Madison; A.B.; Phi Mu, Sec. 4; Social Science Club 1, 4; Pan-Linguist Club 1, 2; Gamma Sigma Pi.

MARTHA ANN DICKEY, Columbus; B.S.; Alpha Omicron Pi; W.A.A. 1, 2, 3, Pres. 4; PEM Club 1, 2, 3, 4.

MARLYN JEAN DUKE, Hanover; A.B.

NANCY HAMILL DYSART, Louisville, Ky.; A.B.; Alpha Delta Pi, Sec. 4; Hanover Players; Modern Dance Club 1, 2; Triangle 1, 2, 3, 4; Panhellenic Council 2; Junior Panhellenic Council 1; Alpha Phi Gamma, Pres. 4; Gamma Sigma Pi; *Pygmalion, Blythe Spirit, Overtures*.

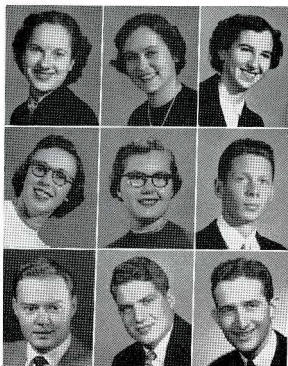
BARBARA A. ESKEW, Corydon; A.B.; Alpha Omicron Pi; Science Club 3, 4; Pan-Linguist Club 1; S.C.A.; Band 1; W.A.A. 1, 2, 3, 4; Modern Dance Club 2, 3, 4; Alpha Lambda Delta; Gamma Sigma Pi.

JEREMY R. FELLAND, Indianapolis; A.B.; Beta Theta Pi, Treas. 2, 3, 4; Hanover Players; International Club 3, Pres. 4; S.C.A. 1, 2; Men's Glee Club 3; Revonah, Sports Editor 2; Triangle 1, Asst. Editor 2; Intertaternity Council 2, 3, Treas. 4; Alpha Phi Omega, Corresponding Sec. 2; Alpha Phi Gamma; Gamma Sigma Pi, Sec.-Treas. 3; Religious Life Committee 4; Charles Lathrop Pack Prize 4; *Family Portrait, Thunder Rock*.

WILLIAM FISHER, Greensburg; A.B.; Sigma Chi, Sec. 3, V. Pres. 4; Pan-Linguist Club 2; Student Council 3, 4.

GEORGE L. FULTON, Hartford City; A.B.; Phi Delta Theta, Wabash College 1; Science Club 3, 4; Social Science Club 4; Hanover Players; Music Appreciation Club 1, 2; Band 1, 2, 4.

CARL R. GEIDER, Indianapolis; A.B.; Sigma Chi; Science Club 1; Social Science Club 2; S.C.A. 1, 2, 3, 4; Chi Epsilon Phi 1, 2, 3, 4; Deputation Teams 1, 2, 3; Chorus 1, 2; John B. Goodrich Oratorical Prize 4; Joseph W. Evans Essay Prize 4; *Shall We Join The Ladies?*, *Lilium*.



rain, wet rain, and cold rain

LAWRENCE F. GLOYD, Osgood; A.B.; Lambda Chi Alpha, Social Chairman 2, Steward 2, Treas. 3 & 4, Pledge Trainer 4; PAF 4; Basketball Mgr. 1, 2, 3, 4; Baseball Mgr. 1, 2; Intramurals 1, 2, 3, 4; Varsity H. Club 1, 2, 3, 4; Triangle 1; Dorm Council 1; Student Council 3, Pres. 4; Senior Class V. Pres.

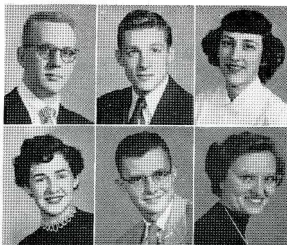
NORMAN GORDON, Chicago, Ill.; B.S.; Phi Delta Theta, Librarian 3, Social Chairman 4; Social Science Club 2, 3; Science Club 2; Hanover Players; Baseball 1, 2; Intramurals 1, 2, 3, 4; *Light Up The Sky, Twilight Walk*.

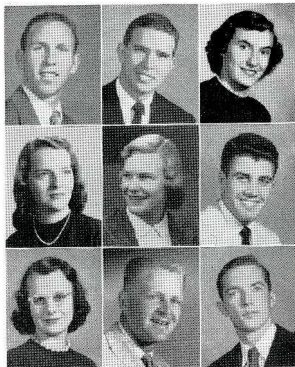
DOROTHY LOUISE GUTHRIE, Hanover; B.S.; Independent Women, V. Pres. 3 & 4; Epsilon Mu Delta.

ELEANOR GUTHRIE, Hanover; B. S.; Independent Women, V. Pres. 2, Pres. 3 & 4, Cum Laude; S.C.A. 1; W.A.A. 1, 2, 3, Publicity Chairman 4; Student Council 3, 4; Alpha Lambda Delta; Gamma Sigma Pi; Epsilon Mu Delta; Alpha Lambda Delta Award.

JOHN HAWLEY, Evansville; A.B.; Phi Gamma Delta, Steward 3 & 4, Song Leader 3 & 4; Cum Laude; S.C.A. 1, 2, 3, Stewardship Chairman 4; WUS Chairman 4; Men's Glee Club 1, 2, 3; Chorus 1, 2; Choir 2; Track 1, 2, 3, 4; Cross Country 1, 2, Capt. 3, 4; Alpha Phi Omega, Pres. 4; Delta Epsilon; Gamma Sigma Pi; Alumni Award.

VIRGINIA KING HAYWORTH, Crawfordsville; A.B.; Alpha Omicron Pi; Social Science Club 4; S.C.A. 3; Chorus 1, 2; Dorm Council 4; Inter-Residence Council 4.





MICHAEL HENNEGAN, Elwood; B.S.; Lambda Chi Alpha, Pres. 4; Basketball 1, 2, 3, 4; Intramurals 1, 2, 3, 4; Varsity H Club 2, 3, 4; Interfraternity Council 3, 4.

ELBERT GENE HINDS, Dupont; A.B.; Sigma Chi, Historian 2, Song Leader 3, Social Chairman 4; Social Science Club 1, Pres. 2, 3, V. Pres. 4; PAF 1, 2, 3, Steering Committee 4; Pan-Linguist Club 1, 2; Band 1, 2, 3, 4; Men's Glee Club 1, 2, 3, Sec. 4; Triangle, Circulation Mgr. 4; Dorm Council 2, 3; Alpha Phi Omega, Treas. 4; Alpha Phi Gamma; Eli Mace Essay Prize 4.

DORIS HUBER, Brownstown; A.B.; Alpha Omicron Pi; Cum Laude, Science Club 2, 3, 4; Pan-Linguist Club 1; S.C.A. 2, 3; W.A.A. 1, 2, 3, 4; Delta Epsilon; Alpha Lambda Delta; Gamma Sigma Pi; Alpha Lambda Delta Award.

A. CAROLINE HUFFMAN, New Ross; A.B.; Phi Mu, Song Leader 4; Music Appreciation Club 1, 2; Band 1, 2, 3, 4; Choir 2, 3, 4; Choral Union 3, 4; Chorus 1, 2; Inter-Residence Council 4.

NANCY CAROLYN JOHNS, Indianapolis; A.B.; Alpha Delta Pi, Pres. 4; Social Science Club 3, 4; PAF 3, 4; S.C.A., Outreach Chairman 2, V. Pres. 3; Delta Kappa Chi 1, 2, 3; Deputation Teams 1, 2, 3, 4; Choir 1, 2, 3, 4; Choral Union 4; Chorus 1; W.A.A. 1, Board 2 & 3; Modern Dance Club 1; Cheer Leader 3; Dorm Council 1, Pres. 2, Asst. Head Resident 3; Inter-Residence Council 4; Panhellenic Council 3; Treas. 4; Student Council 3, 4; Alumni Award; Panhellenic Senior Sorority Award.

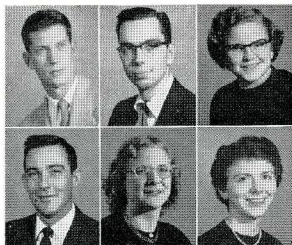
ANDREW SPYROS KATSANIS, Cincinnati, Ohio; A.B.; Science Club 1; Social Science Club 1, 2, 3, 4; PAF 1, 2, 3, 4; International Club 1, 2, Pres. 3, 4; Pan-Linguist Club 1; Music Appreciation Club 1; S.C.A. 1, 2, 3, 4; Chi Epsilon Phi 1, 2, Pres. 3, 4; Deputation Teams 3; Intramurals 1, 2, 3, 4; Track 1; Dorm Council 2, Pres. 3, 4; WSSF Chairman 3; Alumni Award.

COLINNE KELLY, Dayton, Ohio; B.S.; Alpha Delta Pi, Social Chairman 3; Science Club 1; Social Club 2, 3; PAF 3; S.C.A. 1, 2; Deputation Teams 1; Chorus 1; W.A.A. 1, 2, 3; Modern Dance Club 1, 2; Revonah 4; Gamma Sigma Pi; Epsilon Mu Delta; Recreation Committee 2.

WILLIAM B. KISER, Madison; A.B.; Phi Gamma Delta, Pledge Trainer 3; House Mgr. 4; Historian 4; PAF 3; Pan-Linguist Club 2; Football 1, 2, 3, 4; Track 3; Golf 4; Intramurals 1, 2, 3, 4; Varsity H Club 2, 3, 4; Revonah, Advertising Mgr. 4; Alpha Phi Omega; Career Conference Chairman 4; *High Tor*.

GEORGE J. KOSTKA, JR., Berwyn, Ill.; A.B.; Lambda Chi Alpha; S.C.A. 1, 2, 3, 4; Band 1, 2, 3, 4; Cross Country 1; Baseball 1; Intramurals 1, 2, 3, 4; Student Council 3.

this year i finally made a 3.00...



KENTON LEONARD, Indianapolis; A.B.; Sigma Chi, Pledge Trainer 3; Tennis 1, 2, Capt. 3, 4; Intramurals 1, 2, 3, 4; Varsity H Club 3, 4; Triangle 4; Hill Thoughts 3.

RODMAN HAWES LEWELLEN, Columbus; B.S.; Phi Delta Theta; Science Club 3, 4; Band 1, 2, 3; Orchestra 1.

BARBARA JANE LIGHT, Salem; A.B.; Alpha Omicron Pi; Western College for Women 1, 2; S.C.A. 3; Band 3, 4; Choral Union 3, 4; W.A.A. 3, 4; *Twilight Walk, Imaginary Invalid*.

ENZOR LEE MAGGARD, Austin; A.B.

LORA LEE MARLETTE, Indianapolis; A.B.; Alpha Omicron Pi; Science Club 3, 4; S.C.A. 1, 2; Band 1, 2, 3, 4; W.A.A. 1, 2, 3, 4; Delta Epsilon; Gamma Sigma Pi.

JULIA MATTHEW, Anderson; B.S.; Alpha Delta Pi, Social Chairman 4; Alma College 1; Social Science Club 4; PAF 4; Choir 2, 3; Choral Union 3; Revonah 4; Alpha Phi Gamma; Epsilon Mu Delta.

LOUIS W. MELLENCAMP, Columbus; A.B.; Franklin College 1, University of Colorado 2, 3.

WALTER E. MODESITT, North Vernon; A.B.; Lambda Chi Alpha.

CAROLYN (SNYDER) PARKER, Brownstown; A.B.; Alpha Delta Pi; S.C.A. 1, 2, 3, 4; Delta Kappa Chi 1, 2, 3, 4.

WINIFRED PARKER, Hanover; A.B.; International Club 3, 4; Delta Kappa Chi 1, Pres. 2; Chorus 1; Modern Dance Club 3; Dorm Council, Pres. 3; Inter-Residence Council 3; Gamma Sigma Pi.

DAVID M. PATTERSON, Vincennes; A. B.; Vincennes University 2, 3; Science Club 3; S.C.A. 3; Chi Epsilon Phi 3; Choir 3; Choral Union 3.

GILLIAN G. POLK, Louisville, Ky.; A.B.; Alpha Delta Pi, V. Pres. 3, Rush Chairman 4; Choir 3; Choral Union, Sec. 3; Chorus 1, 2; W.A.A. 2; Modern Dance Club 1, 2, 3, 4; Panhellenic Council 3, 4; Junior Panhellenic Council 1; *Pygmalion*.

FRED RICHERT, Jeffersonville; A.B.; Phi Gamma Delta; PAF 3, 4; International Club 4; Pan-Linguist Club 1, 2; S.C.A. 1, 2; Intramurals 1, 2, 3, 4.

BEVERLY ALICE RIECKHOFF, East Chicago; A.B.; Calumet Center, Indiana University 1; Social Science Club 3; Music Appreciation Club 3; S.C.A. 3, 4; Delta Kappa Chi 4; Band 2, 3, Sec. 4; Orchestra 1; W.A.A. 2, 3, Social Chairman 4; PEM Club 2, Sec-Treas. 3 & 4; Dorm Council, Pres. 4; Student Council 4.

NANCY ELLEN ROBERTS, Anderson; A.B.; Phi Mu, Pledge Trainer 4; Pan-Linguist Club 1; Music Appreciation Club 1; S.C.A. 1, 2; W.A.A., Board 4; Modern Dance Club 3, Pres. 4; Triangle 3; Dorm Council 4; Student Council 3, Sec. 4; Gamma Sigma Pi; Epsilon Mu Delta; *Great Big Doorstep*.

1.5 first semester and 1.5 second semester

ALICE MAE RODMAN, Seymour; B.S.; Phi Mu; S.C.A. W.A.A. 1, 2, 3, 4; PEM Club 1, 2, 3, Social Chairman 4.

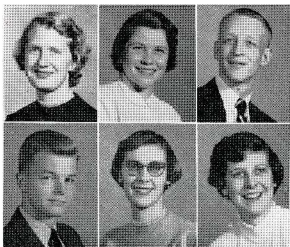
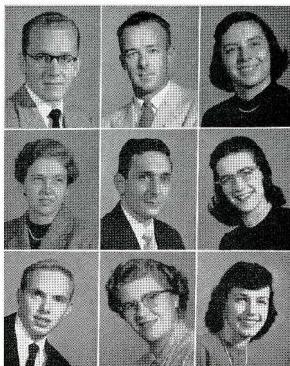
CAROLYN SACKSTEDER, Muncie; A.B.; Alpha Delta Pi, Song Leader 3 & 4; Pan-Linguist Club 1; Music Appreciation Club 2; S.C.A. 1, Cabinet 4; Deputation Teams 1; Band, Librarian 1; Choir 1, Librarian 2 & 3, Pres. 4; Choral Union 3, 4; Chorus 1; W.A.A. 1, 2, 3, Board 4; Modern Dance Club 2, 3, 4; Revonah 2, 3, 4; Triangle 3, Co-Editor 4; Dorm Council 2, 3; Board of Student Affairs 4; Alpha Phi Gamma, Sec. 4; Student-Faculty Publications Committee 4; WSSF Chairman 2; Triangle Editors' Award 3; *Family Portrait*.

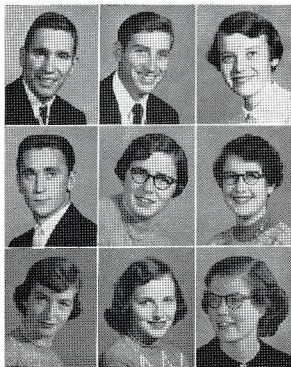
JOHN F. SCHNABEL, Madison; A.B.; Phi Delta Theta, Treasurer 3 & 4; Chorister 4; Social Science Club 2; S.C.A. 2, Cabinet 3, Pres. 4; Chi Epsilon Phi 3, 4; Band 1, 2, 3, 4; Men's Glee Club 2, 3; Choir 3, 4; Choral Union 3, 4; Intramurals 3; Revonah, Business Mgr. 4; Alpha Phi Gamma; Gamma Sigma Pi.

RONALD SHEPHERD, Cincinnati, Ohio; A.B.; Heidelberg College 1; PAF 2, 3; Tennis 3, 4; Dorm Council 3; Dorm Council 4; Recreation Committee, Treas. 4.

IUELEN SIMBALMOS, East Chicago; A.B.; Alpha Delta Pi, V. Pres. 4; Cum Laude; Social Science Club 2, V. Pres. 3, Pres. 4; PAF; S.C.A. 1, 2, 4; Choral Union 4; Chorus 1, 2; W.A.A. 1; Modern Dance Club 1, Business Mgr. 2, 3, 4; Revonah 2; Triangle 1, 2, 3, Society Editor 4; Alpha Phi Gamma; Pi Gamma Mu; Alpha Lambda Delta; Gamma Sigma Pi; Career Conference Publicity Chairman 4; Recreation Committee 4; Alpha Lambda Delta Award.

DONNA MARIE STRETTAR, Waukesha, Wis.; A.B.; Alpha Omicron Pi, Pres. 4; Social Science Club 3; Hanover Players; Music Appreciation Club 1, 2; S.C.A.; Chorus 1, 2; W.A.A. 1, 2, 3, 4; Revonah 2; Triangle 1; Dorm Council 2, Pres. 3; Inter-Residence Council 3, 4; Panhellenic Council 3, 4; Junior Panhellenic Council 1; Board of Student Affairs 3; Theta Alpha Phi; Epsilon Mu Delta, Pres. 4; Senior Class Sec., May Queen, Alumni Award; *Pygmalion, Thunder Rock*.





JAMES B. STURGES, Fairfield, Conn.; B.S.; Phi Delta Theta, Social Chairman 2, Rush Chairman 3, Treasurer 4; Men's Glee Club 2, 3; Choral Union 4; Baseball 1; Golf 2, 3, 4; Intramurals 1, 2, 3, 4; Varsity H Club 2, 3, 4; Dorm Council 1.

ROBERT A. TAYLOR, Austin; A.B.; Science Club 4.

JOAN J. TEMPLIN, Cincinnati; A.B.; Phi Mu, Treas. 3; Social Science Club 2; PAF 4; Pan-Linguist Club 1; Chorus 1; W.A.A. 1, 2, 3, 4; PEM Club 2, 3, 4; Dorm Council 3, 4; Panhellenic Council 3.

ERNEST GOEBEL THOMPSON, Bicknell; A.B.; Sigma Chi; Football 1, 2, 3; Track 1, 2, 3; Intramurals 1, 2, 3, 4; Varsity H Club 1, 2, 3, 4. Died July 2, 1954.

ANN VAN CAMP, Westfield; A.B.; Alpha Delta Pi; Science Club 1, Sec.-Treas. 2, 3, & 4; Hanover Players, Pres. 4; Theta Alpha Phi; W.A.A. 1, 2; Dorm Council 2.

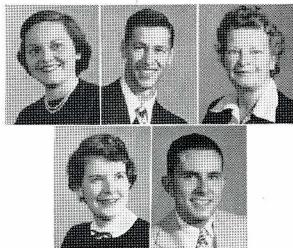
NANCEE VINE, Alton, Ill.; B.S.; Alpha Omicron Pi; MacMurray College 1; Social Science Club 2, 3, 4; PAF 2; Modern Dance Club 2, 3; Epsilon Mu Delta.

VIRGINIA VOGEL, Cincinnati, Ohio; A.B.; Phi Mu, Pres. 4; PAF 3, Co-ordinator 4; Pan-Linguist Club 1; S.C.A. 3, Cabinet 4; Chorus 1; W.A.A. 1, 2, 3, 4; PEM Club 2, 3, 4; Modern Dance Club 4; Revonah 1; Dorm Council 2, Sec.-Treas. 3; Inter-Residence Council 4; Panhellenic Council, Pres. 4; Board of Student Affairs 4; Alumni Award.

CAROLYN WADE, Indianapolis; A.B.; Alpha Omicron Pi; Indiana Central College 1, 2; PAF 3; S.C.A. 3, 4; W.A.A. 3, 4; PEM Club 3, 4; Student Council 4; Career Conference Steering Committee 4.

SUSAN WALL, Winchester; A.B.; Alpha Delta Pi; S.C.A. 1, 2, 3, 4; Delta Kappa Chi, Sec. 2 & 3, Pres. 4; Deputation Teams 2; W.A.A. 1, 2, 3, 4; PEM Club 4; Dorm Council 4.

from the president of the united states...



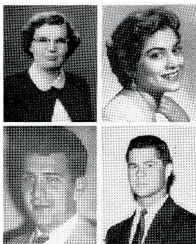
PATRICIA LEE WALNE, Skokie, Ill.; B.S.; Alpha Omicron Pi, Rush Chairman 3, V. Pres. 4; Magna Cum Laude; Northwestern University 2; Science Club 2, Publicity Chairman 3 & 4; Social Science Club 2; PAF 2; Music Appreciation Club 1, 2, 3; W.A.A. 1, 2; Publications Chairman 3, V. Pres. 4; PEM Club 1, Social Chairman 2, 3, 4; Modern Dance Club 4; Triangle 1, 2, 3, 4; Dorm Council, Sec.-Treas. 3; Panhellenic Council 3, Guide Book Editor 4; Alpha Phi Gamma; Alpha Lambda Delta, Senior Advisor 4; Gamma Sigma Pi, Pres. 4; Alumni Award; Alpha Lambda Delta Award; Henry C. Long Citation; Best All Around Senior Woman Trophy.

DONALD J. WARD, Indianapolis; A.B.; Phi Delta Theta, Sec. 3, Rush Chairman 4; V. Pres. 4; Social Science Club 1, 2; Men's Glee Club 4; Choral Union 4; Track 3, 4; Basketball 1, 2; Intramurals 1, 2, 3, 4; Varsity H Club 1, 2, 3, Cabinet 4; Interfraternity Council 2, 3; Historian 4; Freshman Class Pres.; Sophomore Class Pres.

OPAL WASHBURN, Madison; B.S.; Epsilon Mu Delta.

JANICE M. WEIR, Sullivan; A.B.; Alpha Omicron Pi; DePauw University 1, 2; Social Science Club 4; PAF 3; Hanover Players, Sec. 3 & 4; S.C.A. 2, Publicity Chairman 3; Modern Dance Club 2, 3, Publicity Chairman 4; Hill Thoughts, Circulation Manager 3; Dorm Council, Sec. 3; Epsilon Mu Delta, Sec. 3 & 4; *Light Up The Sky*.

EDWIN N. WHINREY, Muncie; A.B.; Phi Gamma Delta; Valedictorian; Magna Cum Laude; PAF, Steering Committee 3, 4; Pan-Linguist Club 1; Revonah 2; Triangle 4; Gamma Sigma Pi; Morse Mathematical Award 3; Assembly Committee 4.



MARGARET MARIE HIATT, Indianapolis; A.B.; Independent Women, Treasurer 3 & 4, Social Chairman 3 & 4; Saluatorian; Magna Cum Laude; Science Club 1, 2, 3, 4; Social Science Club 2; PAF 1, 2, 3, 4; Pan-Linguist Club 1, 2; S.C.A. 1, 2, 3, 4; Delta Kappa Chi 1, 2; Band 1, 2; Chorus 1; Alpha Lambda Delta; Gamma Sigma Pi; Alpha Lambda Delta Award.

NAZHAT RASHID, Bagdad, Iraq; A.B.; Colorado Women's College 1, 2; Social Science Club 3, 4; International Club 3, 4; Modern Dance Club 3, 4; Triangle 4.

RICHARD B. WALKER, Chicago, Ill.; A.B.; Phi Delta Theta, Pledge Trainer 3, Secretary 3; Social Science Club 1, 2; Men's Glee Club 1; Intramurals 1, 2, 3, 4; Dorm Council 1; Student Council 2.

LOUIS R. WELLS, West Baden Springs; B.S.; Phi Delta Theta; Football 3, 4; Basketball 2; Baseball 2, 3, Most Valuable Player 4; Varsity H Club 2, 3, 4.

greetings!

NOT PICTURED

JACK ANDERSEN, Wheaton, Ill.; A.B.; Sigma Chi; Track 1, 2, 3; Intramurals 1, 2, 3, 4.

BRUCE K. BOWDEN, Hanover; A.B.; Phi Gamma Delta; International Club 3, 4; Pan-Linguist Club 1, 2; S.C.A. 1; Intramurals 1, 2, 3, 4; Triangle 3, 4; Dorm Council 1; Alpha Phi Omega; Dr. Edward J. Hamilton Essay Prize 4.

RICHARD S. DAVIS, Michigan City; A.B.; Beta Theta Pi, Social Chairman 2, Recorder 3, Sec. 4; Purdue University 1; S.C.A., Cabinet 2; Chi Epsilon Phi 2, 3, 4; Men's Glee Club 4; Choir 2; Football 2, 3, 4; Intramurals 2, 3, 4; Varsity H Club 2, 3, 4; Student Council, Treas. 3, 4; Board of Student Affairs 4; Alpha Phi Omega, V. Pres. 2; Gamma Sigma Pi; Junior Class Pres.; Margaret Kitchell Whallon Essay Prize 3; Alumni Award.

BETTY LOU DEAN, Charlestown; A.B.; Chorus 2.

GORDON DERBY, Indianapolis; A.B.; International Club 1; Pan-Linguist Club 1; S.C.A. 2, 3; Chorus 1, 2; Triangle 1.

GEORGE G. FELDMAN, III, South Bend; A.B.; Phi Gamma Delta; PAF 4; International Club 4; Intramurals 1, 3, 4; Dorm Council; *Blythe Spirit*.

JACK LOWELL HAINES, Indianapolis; B.S.; Lambda Chi Alpha; Football 1, 2, 3, Capt. 4, Most Valuable Player 4; Track 3; Baseball 2; Intramurals 1, 2, 3, 4; Varsity H Club 1, 2, 3, 4.

RICHARD HENDRICKS, Elwood; A.B.; Sigma Chi; S.C.A. 1, 2; Football 1, 2, 3, 4; Track 1, 2, 4; Baseball 3; Intramurals 1, 2, 3; Varsity H Club 1, 2, 3, 4; Dorm Council 1, 2.

THOMAS HILL, Scottsburg; A.B.; Lambda Chi Alpha.

KENTON KELLER, Brookfield, Ill.; A.B.; Phi Delta Theta, Sec. 3, House Manager 4; Men's Glee Club 1; Baseball 1, 2, 3; Intramurals 1, 2, 3, 4; Varsity H Club 1, 2, 3, 4.

ROBERT KRAFT, Gary; B.S.; Sigma Chi; Football 1, 2, 3, 4; Basketball 1; Intramurals 1, 2, 3, 4.

ROBERT C. LAUER, Hanover; A.B.; Sigma Chi, Pres. 3; Band 2, Pres. 3, 4.

ROBERT BRIGGS LAWSON, Shelbyville, Ky.; A.B.; Phi Delta Theta; Centre College 1, 2; Golf 3, 4; Varsity H Club 4; Hill Thoughts 3; *Light Up The Sky, The Hunted*.

KENNETH LEE, Chicago, Ill.; A.B.; Sigma Chi; Denison University 3, Northwestern University 3; Golf 2, 4; Intramurals 1, 2, 4.



honor's day awards

R. Casten, M. Hiatt, P. Walne, Dean Bucks, N. Johns, Dean Tate.

and thanks for the memories...

CHARLES LIPP, Minneapolis, Minn.; A.B.; Beta Theta Pi; Men's Glee Club 1, 2; Choir 1; Triangle 1, 2; Alpha Phi Omega; Alpha Phi Gamma; Gamma Sigma Pi.

JAMES LLOYD, Salem; A.B.; Phi Delta Theta, Pres. 3; Student Council 3, 4.

J. C. LYTTLE, Austin; B.S.; Sigma Chi; Football 1, 2, 3, 4; Baseball 1, 2, 3, Co-Captain 4; Intramurals 1, 2, 3, 4.

HUGH A. McANDLESS, Ft. Wayne; A.B.; Hiram College 1.

BILLIE NIGHBERT, Milton, Ky.; A.B.; Phi Gamma Delta.

WILLIAM ERNEST PRUETT, Columbus; A.B.; Purdue University 1.

SARA RAMSEY, Warsaw; A.B.; Alpha Delta Pi, Treas. 3 & 4; Social Science Club 3; S.C.A. 1; W.A.A. 1.

WILLIAM D. SEESE, Monticello; A.B.; Phi Gamma Delta; Science Club 3, 4; International Club 4; S.C.A. 1, 2, 3; Track 4; Baseball 1, 2; Intramurals 1, 2, 3, 4; Dorm Council 1, 2; Alpha Phi Omega.

C. B. SHULL, Aurora; A.B.; Asbury College 1; Miami University 2.

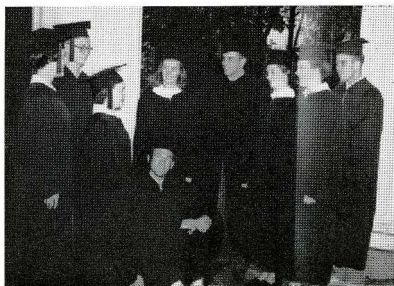
JOHN M. SNAWDEN, Louisville; A.B.; Georgetown College 1, University of Louisville 2.

FRANCIS TERRELL, Bedford; A.B.; Phi Delta Theta; Basketball 1, 2; Varsity H Club.

JOE WELLS, Hanover; A.B.; Cum Laude; Science Club 2, 3, 4; Delta Epsilon.

CLARENCE ZAK, JR., Wheaton, Ill.; A.B.; Sigma Chi; Science Club 1, 2; S.C.A. 1, 2; Intramurals 1, 2, 3, 4; Dorm Council 1.

D. Strettar, J. Hawley, P. Walne, R. Casten, B. Buckingham,
D. Davis, G. Vogel, N. Johns, A. Katsanis.



alumni awards

Finnegan's



what's this? husbands' day to do the shopping?

Phone 9-3561

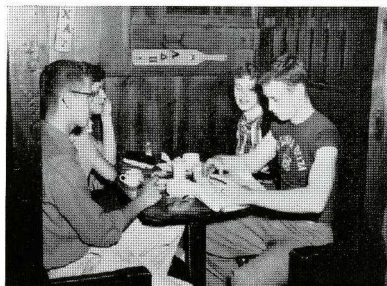
HANOVER

INDIANA

1954 — Our 42nd Year Providing Dependable

Low-Cost Electric Service

PUBLIC SERVICE COMPANY *of Indiana, Inc.*



cheeseburgers for a hungry foursome

SEA FOOD
STEAK DINNERS
SANDWICHES
and
SALADS

CAMPUS CABIN

FOUNTAIN SERVICE

SNACKS

VOLZ CHEVROLET CO.

Genuine Chevrolet Parts

Phone 727 Office

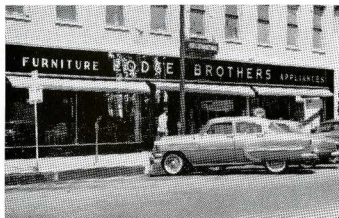
885 Body Shop

Madison

Indiana

Marge takes the wheel of a brand new Corvette





LODGE'S

For The Finest
FURNITURE
LAMPS

Madison

Indiana

that easy chair for your room . .

Compliments of
CENTRAL HOTEL
and
CAFETERIA

Madison, Indiana

PAUL J. PEDDIE

DRY CLEANERS

Jack Mullarkey and Bob Szot

Agents

Pick Up and Delivery

3 DAY SERVICE

MADISON THEATER CORP.

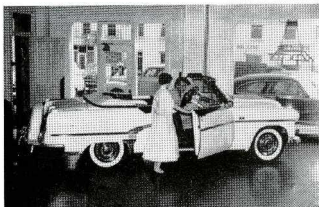
"Tops in top movies"



MADISON
THEATRE

OHIO
THEATRE

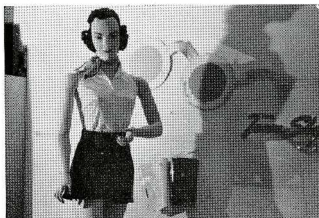
on Sunday night . . . a favorite place to take your favorite date



CLAPP MOTOR COMPANY

*Your Dodge and Plymouth
Dealer*

Dic and Nancy seem to like this new Pacer



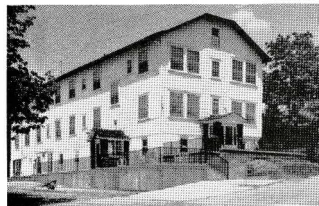
TOWN SHOP

*Ladies Ready to Wear
Accessories*

Madison

Indiana

... where Hanover co-eds shop

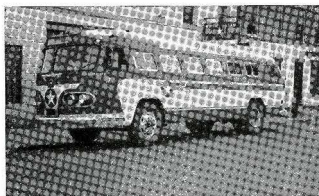


THE HOTEL DENNY

*East Main Street
Phone 530*

"Every room with bath"

... crowded on weekends with visiting parents



Go By

WHITE STAR BUS LINES

*Fast — Dependable — Safe
Phone 1014*

Madison

Indiana

for those weekends home

COOPER'S CORNER

Fountain Service

Cosmetics

Magazines

Hanover

Phone 9-3581

"anytime is Coke time"



HOUSE of FLOWERS

Emmett S. Wood, Prop.

College Store Agent

Corsage Specialists

Phone 7

Madison

Indiana

*roses or gardenias . . . Deke and Lover
can't make up their minds*



HANOVER CLEANERS

Always Dependable

Service

must be going all out for tonight's date



LODGE'S

For the Finest

Hardware — Paint's

Allen and Mary hunt for just the right shade



Southern Indiana's Most Modern and Complete Department Store

GOODMAN JESTER



John and Dave examine those price tags

STUDENT SHOPPING CENTER

We Feature Nationally Advertised Lines Throughout the Store

Phone 716

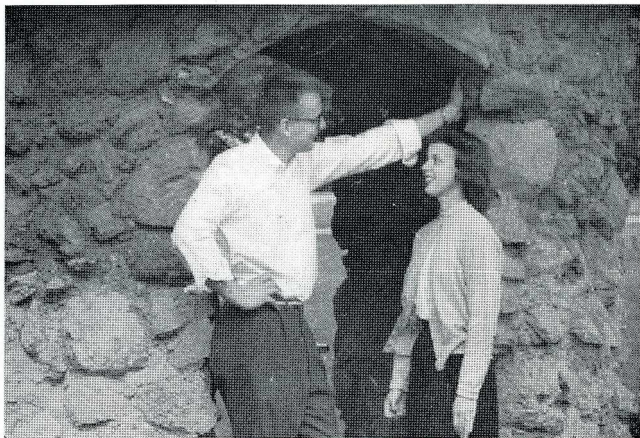
Madison

Indiana

OSCAR C. BEAR

Jeweler and Optometrist

the sparkle in Del's eye matches the sparkle on her finger



OSCAR C. BEAR, JR.

Engraving — Repairs

Madison

Indiana



"lemon coke, chocolate coke, vanilla coke and a root beer?"

INGLIS DRUG STORE

COSMETICS
PRESCRIPTIONS
GIFTS

Phone 10

202-240 E. Main St.

Madison, Indiana

THE MERIT SHOE STORE

222 East Main Street, Madison, Indiana

*Congratulates the
graduating class
and wishes each
success in your
chosen field of work.*

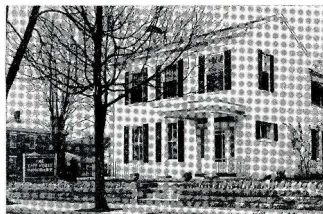
*We also invite
all the students
to visit our store
for all shoe needs.
Latest styles, popular prices.*

TAFF HOUSE

*Fine Rooms
Reasonable Rates
624 W. Second St.
Phone 539*

Madison

Indiana





HANOVER GARAGE AND HARDWARE

FOR THE
CAR

FOR THE
HOME

Jewell and Bunny buy dishes for the a. o. kitchen

Compliments of

THE FIRST NATIONAL BANK

of Madison

The Best Store for Men and Boys

KNOEBEL-BIRD CLOTHING

Madison

Indiana



REED'S LAUNDRY and DRY CLEANERS

210 West Main

Madison

Indiana

HILLSIDE DRIVE-IN HOTEL

"In Southern Indiana Hills Overlooking Madison, The Ohio River, and the Hills of Kentucky"

Phone 661

Madison

Indiana

Beautiful Furnished
Rooms. Private Baths.

Family Facilities

T. V. and Radio

Free Parking—100 cars

Convenient to Everything

A A A

All Rooms Newly
Decorated



Visit our completely
remodeled Riverview
Dining Room ...

Serving wonderful
Home-cooked food

Open week-days and
Sundays

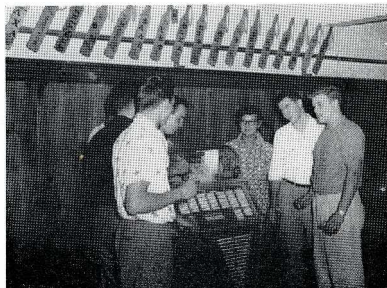
COME AS YOU ARE

THE SODA BOWL

Complete Fountain Service

who's got a nickel for the juke box?

Bowling
and
Pool



Dinner
and
Dancing

TASTE TELLS

THOMPSON-GLASS DAIRY PRODUCTS

MADISON

INDIANA

THERE'S MORE FOR YOU AT
THE COLLEGE STORE

The Downtown of the Campus



Mrs. Parker's book interests Sue and Lynn

***MADISON RADIO
SERVICE***

Television Sales and Service
Philco, Zenith and Motorola

131 E. Main

Phone 900

FIESTA CAFE

Madison's First Restaurant
We cater especially to college
parties and fancy dinners

Madison

Indiana



***SAMPLE ICE CREAM
CO., INC.***

230 W. Main St.

Phone 6588

Madison, Indiana

"make mine a Banana Island!"

RENNE'S

Self-Service Laundry

603 W. Main St.

Phone 91

no wasday blues for Marge and Deke!



ROYCE GUN & TACKLE SHOP

318 W. MAIN

STEINHART-HANSON, INC.

Stationers

Office Equipment

Greeting Cards

Phone 1045

Madison

JUG RAISOR'S BARBER SHOP

314 W. MAIN

*We Specialize in Crew Cuts
and Flat Tops*

PARK 'N EAT

TALL BOYS

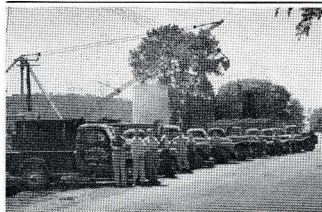
SHRIMP

Orders to Go

Phone 7-2086

Madison

Road 107



CENTRAL COAL COMPANY

East Kentucky Treated Stoker

Winifrede, West Virginia Lump

Madison 50

Hanover 9-3001



this sure beats dorm food!

CLIFTY INN

IN CLIFTY FALLS STATE PARK

One Mile West of Madison on State Road 50

OPEN ALL YEAR

Meals Served Family Style

Phone Madison 385

THE WHITE STUDIO

Better Photographs

Cameras & Supplies

Phone 113

Madison

428 N. Mulberry

OLDEST BANK IN INDIANA

NATIONAL BRANCH BANK MADISON SAFE DEPOSIT & TRUST CO.

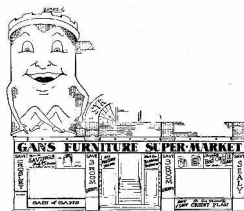
Congratulations

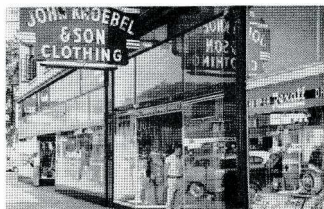
GANS FURNITURE SUPER MARKET

Jefferson Street

Madison

Indiana





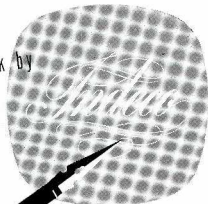
JOHN KNOEBEL & SON

Madison

Indiana

*to buy or to window shop . . .
that is the question*

engravings in this book by



PUBLICATION
DIVISION

INDIANAPOLIS ENGRAVING COMPANY, INC.

222 EAST OHIO STREET • INDIANAPOLIS 6, INDIANA

Graessle-Mercer Company
PRINTERS AND BINDERS
SEYMOUR, IND.

Index

Seniors

| | |
|---------------------|---|
| Allan, James | 87, 100 |
| Allie, Allen | 51, 71, 76, 95, 100 |
| Andersen, Jack | 95 |
| Arjomand, Manoucher | 48, 93, 100 |
| Avril, Ferdinand | 48, 93, 100 |
| Bailey, David | 48, 49, 100 |
| Barrett, Warren | 95 |
| Bayer, Carol | 42, 44, 47, 53, 81, 100 |
| Boyle, Sue | 100 |
| Briscoe, James | 40, 93, 100 |
| Buckingham, Barbara | 42, 43, 44, 45, 81, 100 |
| Busse, Russell | 51, 71, 75, 93, 100 |
| Casten, Richard | 41, 56, 57, 71, 93, 100 |
| Cooper, William | 76, 93, 100 |
| Coswell, Nancy | 44, 45, 100 |
| Davis, Richard | 40, 43, 46, 51, 56, 87 |
| Demaree, Mary | 44, 85, 101 |
| Dickey, Martha | 83, 101 |
| Duke, Marilyn | 101 |
| Dysart, Nancy | 42, 80, 81, 101 |
| Eskew, Barbara | 43, 45, 50, 51, 83, 101 |
| Feldman, George | 75, 93 |
| Felland, Jerry | 41, 46, 87, 101 |
| Fisher, William | 40, 87, 101 |
| Fulton, George | 44, 45, 81, 101 |
| Geider, Carl | 44, 93, 101 |
| Gloyd, Lawrence | 51, 89, 101 |
| Gordon, Norman | 91, 101 |
| Guthrie, Dorothy | 45, 101 |
| Guthrie, Eleanor | 36, 40, 43, 45, 50, 101 |
| Hall, John | 101 |
| Hawley, John | 44, 47, 101 |
| Hayworth, Virginia | 44, 47, 101 |
| Hendricks, Richard | 51, 56, 95 |
| Hennegan, Michael | 41, 51, 61, 89, 101 |
| Hiatt, Margaret | 43, 105 |
| Hinds, Gene | 44, 46, 48, 53, 95, 102 |
| Huber, Doris | 45, 43, 102 |
| Huffman, Carol | 56, 98, 76, 102 |
| Johas, Nancy | 38, 40, 48, 49, 80, 81, 102 |
| Katsania, Andrew | 102 |
| Keller, Kenton | 51, 75, 76, 91 |
| Kelly, Colinne | 52, 81, 102 |
| Kiser, William | 46, 51, 52, 56, 76, 93, 102 |
| Kostka, George | 102 |
| Kraft, Robert | 56, 77, 95 |
| Lauer, Robert | 95 |
| Lawson, Robert | 91 |
| Leonard, Kenton | 51, 67, 76, 95, 102 |
| Lewellen, Rodman | 91, 102 |
| Light, Barbara | 48, 49, 83, 102 |
| Lipp, Charles | 46, 87 |
| Lloyd, James | 40, 75, 76, 91 |
| Lytle, J. C. | 56, 98, 76, 95 |
| Maggard, Enzor | 102 |
| Mariette, Lora | 43, 47, 83, 102 |
| Matthew, Julia | 45, 52, 81, 102 |
| Mellencamp, Louis | 44, 103 |
| Modisist, Walter | 103 |
| Parker, Winifred | 46, 103 |
| Patterson, David | 44, 103 |
| Polk, Gillian | 38, 41, 81, 103 |
| Ramsey, Sara | 44, 80, 81 |
| Rashid, Nezhat | 105 |
| Richard, Frederick | 48, 93, 103 |
| Rieckhoff, Beverly | 40, 48, 50, 103 |
| Roberts, Nancy | 36, 38, 40, 45, 50, 51, 85, 103 |
| Rodman, Alice | 50, 85, 103 |
| Sacksteder, Carolyn | 38, 40, 42, 45, 48, 49, 50, 53, 81, 103 |
| Schnabel, John | 43, 44, 45, 48, 49, 52, 91, 103 |
| Seese, William | 71, 93 |
| Shepherd, Ronald | 47, 81, 103 |
| Simbalsos, Luellen | 42, 43, 44, 47, 53, 80, 81, 103 |
| Silney, Philip | 75 |
| Snyder, Carolyn | 103 |
| Stretter, Donna | 38, 41, 83, 103 |
| Surges, James | 51, 75, 76, 91, 104 |
| Taylor, Robert | 104 |
| Templin, Joan | 38, 50, 85, 104 |

| | |
|------------------|---------------------------------|
| Terrell, Francis | 51, 71, 95, 104 |
| Thompson, Ernest | 51, 71, 95, 104 |
| Vamos, William | 41, 95 |
| VanCamp, Ann | 43, 44, 45, 81, 104 |
| Vine, Nancee | 44, 83, 104 |
| Vogel, Virginia | 38, 40, 41, 45, 85, 104 |
| Wade, Carolyn | 38, 40, 50, 83, 104 |
| Wells, Richard | 43, 91, 105 |
| Wall, Susan | 81, 104 |
| Walne, Patricia | 38, 41, 42, 43, 45, 50, 83, 104 |
| Ward, Donald | 41, 51, 71, 75, 76, 91, 104 |
| Washburn, Opal | 104 |
| Weir, Janice | 83, 104 |
| Wells, Alice | 45 |
| Whitney, Edwin | 43, 93, 104 |
| Zak, Clarence | 95 |

Juniors

| | |
|----------------------|--------------------------------|
| Ball, William | 91, 100 |
| Barnes, Lucia | 45, 48, 83 |
| Barnett, Joseph | 49, 95 |
| Berry, Suzanne | 43, 44, 45, 47, 52 |
| Bogard, Robert | 43, 91 |
| Bowden, Bruce | 93 |
| Bullington, Dan | 61, 68, 93 |
| Cappony, Angeline | 30 |
| Copeland, Mary | 44, 45, 46, 53, 81 |
| Danbury, James | 40, 44, 52 |
| Dean, Doris | 40, 48, 49, 30, 83 |
| Deardour, Richard | 51, 56, 93 |
| Dietel, Don | 71, 87 |
| Diller, Paul | 40, 46, 67, 89 |
| Duglie, Larry | 51, 68, 89 |
| Dulaney, Robert | 41, 44, 45, 95 |
| Eby, Helen | 40, 47, 85 |
| Emley, Jack | 51, 56, 87 |
| Farrar, Jack | 46, 51, 56, 68, 76, 93 |
| Forsyth, Lamont | 46, 51, 56, 68, 76, 93 |
| Fox, Susan | 52 |
| Fribley, Peter | 44, 49, 87 |
| Gilmore, Richard | 45, 95 |
| Gray, Ralph | 41, 43, 51, 53, 71, 93 |
| Haines, Jack | 51, 56, 89 |
| Hamilton, Robert | 91 |
| Hart, Robert | 41, 89 |
| Harkins, Mary | 52, 81 |
| Hartwell, Pauline | 85 |
| Hill, George | 51, 68, 93 |
| Hollensbe, Joyce | 44, 49, 83 |
| Holmes, Thomas | 93 |
| Hughes, John | 48, 49, 51, 52, 87 |
| Hungate, Jane | 40, 41, 42, 52, 93 |
| Hunt, Charles | 75, 87 |
| Inman, Marjorie | 51 |
| Irvin, Lester | 75, 87 |
| Johnston, David | 51, 61, 77, 87 |
| Kerr, Rosemary | 49, 81 |
| Kersting, Raymond | 42, 43, 44, 45, 48, 49, 83 |
| LaFeber, Walter | 40, 42, 43, 48, 49, 51, 53, 87 |
| Landis, Joe | 61, 75, 77, 87 |
| Laney, Patricia | 83 |
| Leary, Delma | 44, 52, 81 |
| Logsdon, Patricia | 41, 83 |
| Palmer, Edward | 47, 68, 87 |
| McLure, Jo Ann | 47, 49, 51, 81 |
| McNeely, Dale | 71, 76, 93 |
| Massman, James | 40, 41, 45, 75, 76, 91 |
| Mauger, Patsy | 41, 85 |
| Moffett, Paul | 43, 44 |
| Mullerjack, Jack | 75, 77, 87 |
| Prentiss, Thomas | 47, 75, 93 |
| Prime, Morton | 42, 45, 46, 52, 77, 87 |
| Randell, Anna | 45 |
| Rankin, Jane | 83 |
| Rehm, Justin | 51, 71, 77, 87 |
| Shepherd, Benna | 45, 83 |
| Steinmetz, Mary Jane | 43, 85 |

| | |
|------------------|--------------------|
| Srier, Harold | 51, 68, 75, 77, 87 |
| Sutton, Richard | 51, 68, 87 |
| Szot, Robert | 51, 68, 75, 87 |
| Thorpe, Carol | 81 |
| Troyer, James | 75, 76, 91 |
| Walker, Donna | 51, 85 |
| Wardwell, Nellie | 40, 44, 45, 49 |
| Ziegler, Carol | 41, 85 |

Sophomores

| | |
|----------------------|------------------------|
| Adair, Ruth | 45, 51 |
| Aufderheide, Janet | 83 |
| Bas, Milton | 41, 51, 89 |
| Bard, Patricia | 83 |
| Barrett, Elsie | 83 |
| Bewley, Sara | 85 |
| Bowie, Alice | 52 |
| Brewer, Robert | 40, 47, 95 |
| Brown, James | 45, 49, 93 |
| Brown, Ronald | 56, 93 |
| Bunton, Irvin | 91 |
| Burger, Robert | 67, 75, 77, 87 |
| Cameron, Robert | 87 |
| Carmel, Thomas | 48, 49, 75, 76, 91 |
| Child, Edward | 83 |
| Christie, Marjorie | 51, 85 |
| Circle, Jeanne | 85 |
| Clift, Bobbie | 43 |
| Conover, Connie | 81 |
| Conrad, Janet | 50, 83 |
| Cox, Donald | 31, 56, 91 |
| Crawford, Gladys | 43, 47, 83 |
| Dance, Jewell | 83 |
| Day, Carol | 45, 51, 85 |
| Dickmann, Richard | 77, 95 |
| Dismore, Dorothy | 50, 85 |
| Dwenger, John | 51 |
| Earl, John | 51, 76, 91 |
| Eids, Byron | 93 |
| Elliott, Byron | 95 |
| Enns, Nancy | 47, 81 |
| Eskew, Marie | 36, 83 |
| Everett, Janice | 83 |
| Federspil, Harry | 51 |
| Fisher, Beth | 52 |
| Gibson, Gerald | 75, 87, 95 |
| Gould, Sandra | 51, 85 |
| Green, Barbara | 51, 85 |
| Griffin, Carolyn | 45, 47, 81 |
| Groskurd, Rosalie | 48, 49 |
| Haase, Ruth | 45, 48, 49, 85 |
| Hawkins, Marvin | 51, 56, 89 |
| Heberling, Peggy | 43 |
| Hedrick, Emily | 43, 45, 49, 81 |
| Heintz, Jo | 83 |
| Herzog, Marilyn | 43, 53, 71 |
| Hickman, Carol | 46, 81 |
| Hosler, David | 95 |
| Hough, James | 56, 76, 91 |
| Hunter, Nancy | 43 |
| Hudson, Terrell | 71, 89 |
| Hunt, William | 77, 95 |
| Hurley, Betty | 81 |
| Hutson, Myron | 71, 87 |
| Joseph, Philip | 68, 75, 77, 87 |
| Kasperek, Joanne | 43 |
| Kastner, Don | 44, 45, 46, 48, 49, 83 |
| Kemp, Sally | 45, 49 |
| Kile, Daniel | 51, 56, 61, 68, 77, 89 |
| Kile, Kevin | 75, 76, 91 |
| Kinney, Mary | 51, 85 |
| Kitchell, Barbara | 37, 43, 45, 48, 49, 81 |
| Klinefeiler, Barbara | 50, 81 |
| Koenig, Helen | 51, 85 |
| Kral, Barbara | 43 |
| Kryter, Barbara | 43, 52, 83 |
| Laney, Robert | 89 |
| Largent, Janet | 47 |
| Lee, Norman | 95 |
| Leslie, Marcia | 48, 49, 52, 81 |
| Lewis, Shirley | 52, 81 |
| Lindner, Maury | 95 |
| Longnecker, Shirley | 37, 83 |

| | | | | | |
|---------------------|--------------------|------------------------|--------------------|-----------------------|----------------|
| Luther, Ardeth | 43, 45 | Christiansen, Patricia | 85 | Myers, Robert | 87 |
| Lynn, Richard | 71, 95 | Conrad, Howard | 71, 77 | Nacca, Thomas | 56, 93 |
| McGeath, Bruce | 77, 95 | Corzine, Leonard | 85 | Newhouse, Alan | 56, 48 |
| McQuiston, Sampson | 68, 89 | Criswell, John | 76, 91 | Ortlieb, Brooks | 61, 95 |
| Moore, Catherine | 50, 51, 85 | Curry, James | 95 | Orton, James | 71, 91 |
| Neel, Dottie | 85 | Cutshall, Hudson | 48, 49, 61, 77 | Osemer, Jane | 81 |
| Newton, James | 95 | Davis, Gaylord | 71, 95 | Osmon, Delores | 85 |
| Nims, Sonya | 44, 45, 81 | Dawson, James | 56, 77 | Oursler, Dianne | 45, 48, 49, 81 |
| Norris, Charles | 46, 93 | Demaree, Nancy | 85 | Owens, Lou Anne | 45, 83 |
| Oakden, Carolyn | 77, 95 | Dezire, Robert | 85 | Parlier, Robert | 45, 83 |
| Oliver, Martha | 43, 81 | Diefendahl, Rita | 85 | Parker, Phyllis | 50 |
| Ortale, Carla | 43, 83 | Doolen, Nancy | 81 | Parson, William | 61, 93 |
| Park, John | 77, 87 | Dunbar, Kennita | 45, 49, 81 | Pearson, Janet | 85 |
| Patterson, Pamela | 43, 48, 49, 83 | Edmundson, Jack | 77 | Perry, Gayle | 43, 81 |
| Petrie, Jack | 68, 75, 76, 91 | Fleischer, Judith | 83 | Pheps, Patricia | 85 |
| Phillippe, John | 51 | Flory, Delores | 43 | Pikaraitis, Bruno | 93 |
| Pickens, Dorothy | 45, 49, 51, 83 | Foltz, Howard | 95 | Poe, Mary Ellen | 43, 45, 83 |
| Powell, John E. | 41, 48, 77, 87 | Forbes, Carol | 43, 49, 83 | Powers, Jane | 52, 81 |
| Powell, John J. | 89 | Foreman, Susan | 81 | Proud, Theodore | 53, 91 |
| Powell, Lynn | 51, 56, 71, 95 | Foust, Karen | 85 | Pucher, Theodore | 56, 68, 93 |
| Roberts, Mary | 37, 51, 85 | Frohman, Susan | 85 | Purvis, John | 71, 77, 87 |
| Roof, David | 56 | Gastineau, Marcia | 50 | Raddliff, Doris | 83 |
| Rose, James | 41, 75, 76, 93 | Gillespie, Robert | 71, 91 | Rankin, David | 48, 49 |
| Rosen, Elizabeth | 91 | Ginsburg, Ronald | 93 | Rasmussen, Georgann | 83 |
| Sanford, Charles | 91 | Goodwin, Robert | 68, 93 | Reid, Maurice | 56, 89 |
| Satterly, Donald | 75, 87 | Grim, David | 48, 95 | Ricketts, Gordon | 48, 93 |
| Schroeder, Jo | 45, 83 | Griner, Barbara | 45, 81 | Rike, Frederick | 77 |
| Siefferman, John | 51, 56 | Hamm, Ramon | 51, 75 | Robertson, James | 89 |
| Smith, R. Larry | 45, 48, 49, 75, 93 | Happ, Jeannine | 45, 83 | Roehm, Richard | 87 |
| Smith, Ruth Ann | 83 | Harbison, Joyce | 81 | Ross, Julia | 43 |
| Solazzo, Anthony | 51, 77, 87 | Hart, James | 49, 81 | Sandberg, David | 77, 95 |
| Staley, Sally | 53, 81 | Hawley, Jere | 85 | Schipper, Nancy | 45, 49 |
| Steger, Donald | 76, 77, 95 | Henderson, Don | 93 | Schmidt, Jennie | 45, 49, 83 |
| Steiner, Donald | 47, 95 | Henry, Sara | 43, 81 | Schopp, Carleen | 45, 49, 83 |
| Stiles, Sally | 56, 81 | Herrington, Nancy | 50, 83 | Schrock, Ancil | 48, 95 |
| Stonebraker, Sharon | 43, 85 | Hershberger, Shirley | 83 | Scotten, Jeonard | 56 |
| Stout, Gayle | 51, 85 | Hertzog, Jean | 43, 81 | Seibert, Jean | 81 |
| Stout, Lora Jo | 85 | Hick, James | 45, 83 | Severs, Clyde | 56, 68, 93 |
| Todd, Nancy | 45, 52, 81 | Horn, Gary | 43, 48, 83 | Shaw, Corine | 48, 49 |
| Tyner, Robert | 93 | Horwarth, Gayle | 85 | Shedd, Richard | 56, 77 |
| Vestile, Imogene | 50, 85 | Huffman, Maureen | 48 | Shepard, Nancy Ann | 83 |
| Voyles, John | 48, 93 | Hull, Martha | 48 | Shepherd, Marcia | 83 |
| Walker, Karl | 77, 95 | Hungerford, Ruby | 48, 49, 81 | Sherridan, Joan | 81 |
| Wasburn, Samuel | 41, 52, 95 | Hunter, Ben | 91 | Short, Nancy | 81 |
| Watson, Nancy | 85 | Hutchins, John | 61, 95 | Smith, Lawrence | 95 |
| Westing, David | 85 | Jinks, Janice | 43, 48, 85 | Snyder, James | 52, 67, 91 |
| Weinke, Marilyn | 85 | Johnson, Jean | 85 | Sohn, Jane | 85 |
| White, Sara Ann | 85 | Jones, June | 85 | Springer, William | 56 |
| Wingate, John | 95 | Juilerat, Juana | 85 | Stanley, John | 95 |
| Wisdom, Sharon | 81 | Kanze, Carolyn | 85 | Stanley, Robert | 56 |
| Works, Mary | 50 | Katsanis, Thomas | 77, 95 | Stewart, Harry | 61, 71 |
| Young, Jane | 50, 81 | Kern, Gayle | 85 | Stiles, Dale | 56, 89 |
| Zierer, Sabra Ann | 85 | Klopper, Louis | 93 | Stoops, James | 71, 91 |
| | | Kreitzman, Joe | 87 | Strouse, LeRoy | 95 |
| | | Kroush, Joyce | 45, 47, 81 | Sullivan, Patricia | 45, 48, 49 |
| | | Lashbrook, Wendell | 95 | Summerford, Ann | 81 |
| | | Leap, James | 61, 68, 91 | Swengel, Barbara | 45 |
| | | Lee, Philip | 95 | Tennant, John | 56, 87 |
| | | Lewis, Bonnie | 83 | Thompson, Kent | 93 |
| | | Lewis, Dory | 61 | Toane, George | 93 |
| | | Lewis, Janice | 95 | Trittipo, Ann | 48, 49, 83 |
| | | Lickliter, Arlan | 61, 68, 89 | Troyer, Robert | 91 |
| | | Liddle, Larry | 56, 61, 77, 89 | Tucker, Nina | 85 |
| | | Liggett, Stewart | 68, 89 | Ulrich, Richard | 87 |
| | | Lindhold, Dean | 87 | Van Horn, James | 47, 67, 93 |
| | | Lins, Caroline | 83 | Waits, Diana | 85 |
| | | Little, Barbara | 45, 49, 81 | Waltemeyer, Walter E. | 45 |
| | | Lloyd, Clarence | 75, 76, 91 | Warner, Carol | 43, 52, 81 |
| | | Logan, Sheila | 85 | Watkins, Shirley | 51, 85 |
| | | Loper, Brant | 91 | Wertz, Marilyn | 500 |
| | | Lorts, Mary | 83 | Wharton, Susan | 50, 83 |
| | | MacDougall, Linda | 85 | White, Harvey | 95 |
| | | McKellips, Faith | 45, 49, 83 | White, Joan | 43, 48, 49, 81 |
| | | Machek, Richard | 51, 56, 93 | White, Rebecca | 43, 45, 49, 83 |
| | | Maddux, Robert | 87 | Wild, Carol | 43, 50, 85 |
| | | Mahoney, Chie | 56, 89 | Willen, Lawrence | 56, 61, 71, 89 |
| | | Manthe, Virginia | 48, 49, 51 | Woods, James | 68, 77 |
| | | Maxwell, Mary | 85 | Woods, Nancy | 83 |
| | | Miller, Judith | 47, 85 | Wray, William | 89 |
| | | Miller, Patricia | 81 | Wright, Robert | 56, 76, 93 |
| | | Mohandes, Anoush | 46 | Yaney, Marjorie | 48, 85 |
| | | Mosier, John | 61, 71, 89 | Yap, Danny | 48, 52, 87 |
| | | Mosini, Catherine | 44, 45, 47, 48, 83 | Zirzow, John | 51, 67, 77, 87 |
| | | Myers, Judith | 48, 49, 81 | | |

Freshmen

| | |
|--------------------|------------|
| Adkins, Edward | 48 |
| Allen, Barbara | 85 |
| Allen, Gloria | 81 |
| Armstrong, Nancy | 81 |
| Bailey, Thomas | 95 |
| Becht, Dorothy | 49 |
| Belter, Robert | 48, 95 |
| Belhett, Herbert | 77 |
| Benson, James | 46, 89 |
| Berst, Joanne | 49, 50, 81 |
| Bidlack, Barbara | 50, 81 |
| Bierbaum, Janet | 43, 81 |
| Black, Judith | 85 |
| Board, Natalie | 81 |
| Bohnett, Herbert | 77 |
| Bogner, Mary Ellen | 43, 52, 81 |
| Bohlsen, Thomas | 71 |
| Bowman, Nancy | 85 |
| Breckenridge, June | 48, 49, 81 |
| Brower, Barbara | 81 |
| Brunner, Barbara | 85 |
| Cameisch, Doris | 85 |
| Carson, Olga | 48, 49, 81 |
| Casaceli, Frank | 68, 93 |

