

THE 1939
REVONAH

THE 1939 REVONAH
Published by Junior Class
Hanover College
Hanover, Indiana

Editor-in-Chief

ADA E. MARTIN

Business Manager

RICHARD RUDELL

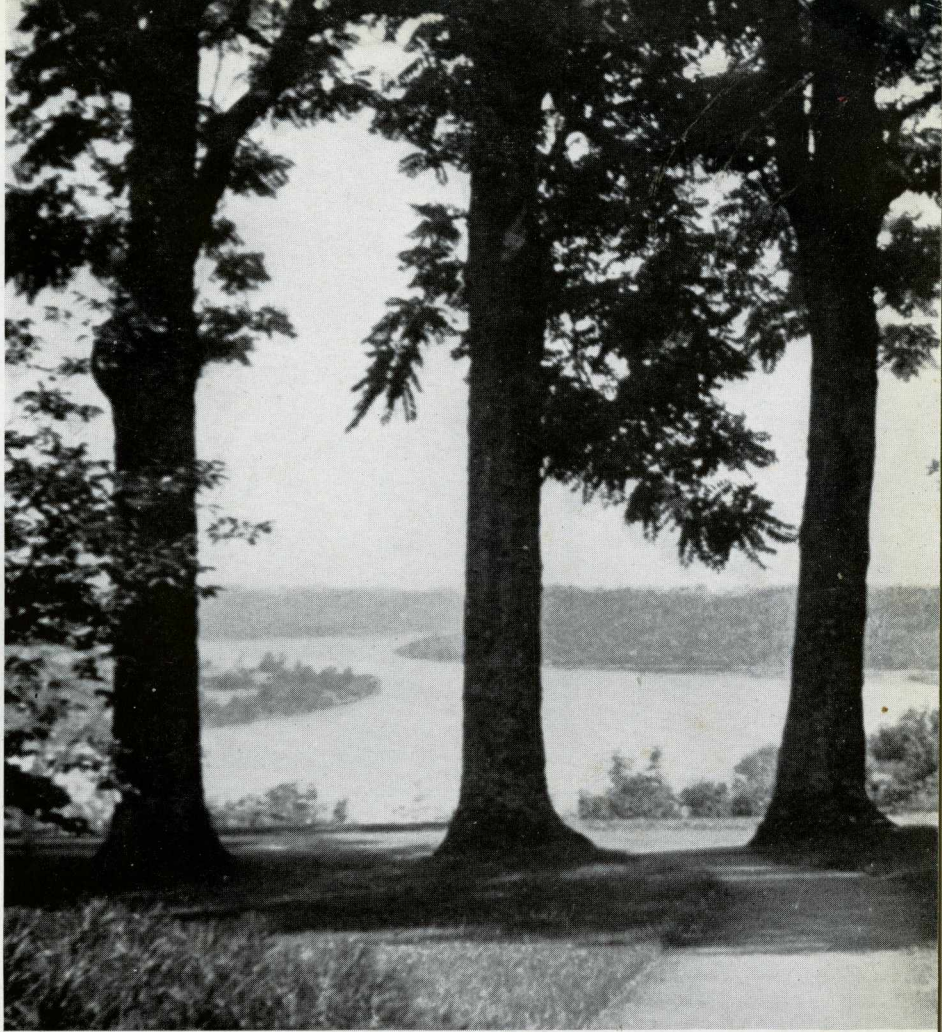


THE OHIO RIVER greets us
each morning as we go to
classes.

DEDICATION

To the three trees so stately and tall, the guardians of Hanover College through so many years, we dedicate this book. Many are the views they have seen and many more will they experience during the coming years.

How lucky they are as they stand viewing a most beautiful scene—the river boats, the students going to and from classes, the faculty, Dr. Parker and his family even down to little Susan. What wonderful tales they must have to tell as they have watched the college and its personnel grow and change. To us they are the symbols of beauty, strength, and friendship—the beauty of the Ohio Valley, the strength of God, the friendship of Hanover. May they stand thus for years to come and be an inspiration to all students and members of Hanover College.



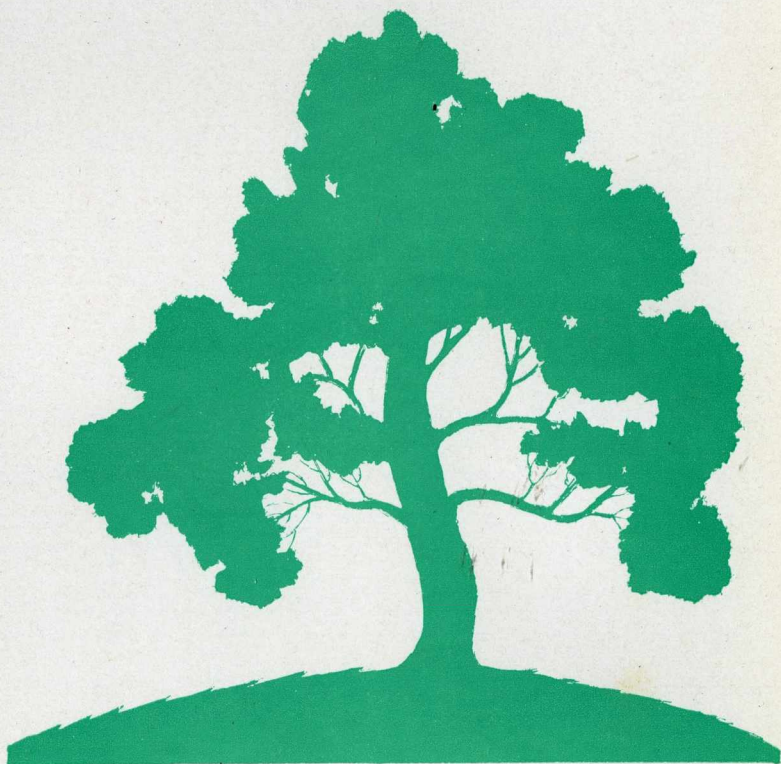
“Poems are made by fools like me,
But only God can make a tree.”

From *Trees*, by Joyce Kilmer

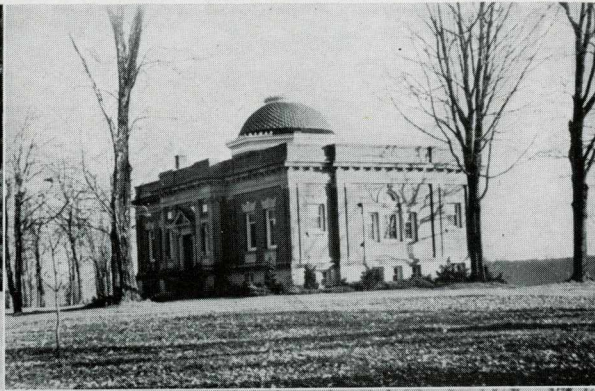
C O N T E N T S

- C O L L E G E
- A C T I V I T I E S
- A T H L E T I C S
- G R E E K S
- A D V E R T I S E M E N T S

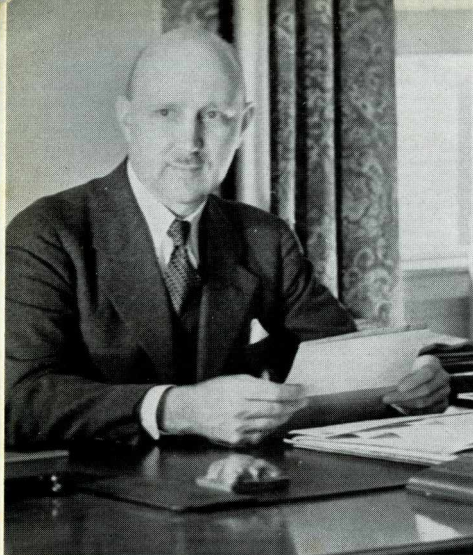
Since in our estimation there is no more beautiful campus than that of Hanover College, we have used Hanover's own scenery as a theme for our book. We have attempted to picture for you the life of beauty and of friendship which we feel our college symbolizes. If we have accomplished this end, we shall feel repaid for our efforts, and we hope that this book will bring back to you the memory of one more happy year at Hanover College.



College



CLASSIC HALL . . . LIBRARY
LUCINA BALL DRIVE . . . SCIENCE HALL



P R E S I D E N T

Albert George Parker, Jr., was graduated from Park College in 1914, having spent six years in the academy and college. After graduating from McCormick Theological Seminary in 1917, he spent two years studying in Japan and China on the Nettie F. McCormick Fellowship which was won at the Seminary. The years 1919-20, 1925-26, and 1928-29 were spent in studying at the University of Chicago from which he received the degree, doctor of philosophy, in the department of Christian Theology and Ethics. In 1930 the honorary degree, doctor of laws, was conferred by Wabash College.

He was appointed by the Board of Foreign Missions in 1920 to Shantung Mission in China. The first year of this appointment was spent in language study in Peking and in famine relief work at Shuntehfu. The remaining four years of his first term were spent teaching economics and sociology at Cheeloo University at Tsinan, China. Two years of a second term were spent in this work from 1926 to 1928, when the disturbed military situation caused his return to the United States.

Since coming to Hanover College in 1929, Dr. Parker has done much to strengthen the school. It is due to his efforts that \$250,000 has been raised to match that same amount given by Mr. William H. Donner.

Hanover College was founded by Dr. John Finley Crowe on January 1, 1827, on the grounds now occupied by the Presbyterian Church. It received its name from the local Presbyterian Church, which was called Hanover in honor of the first minister's wife, whose girl-hood home was at Hanover, New Hampshire.

The main part of the present campus of about 200 acres was purchased about 1849. Classic Hall, Science Hall, College Point House, Hendricks Library, the "Y" building, and the present gymnasium were built between the years 1855 and 1922.

In the fall of 1937 Hanover College was given a wonderful opportunity. Mr. William H. Donner, a former Hanover student and a retired steel manufacturer, offered the college the sum of \$250,000 provided that this sum could be matched by other gifts totaling an equal amount. By June first of the following year the money had been raised.

Now construction of Donner Residence Hall, named in memory of William Henry Donner, Jr., is well under way. The entire gift of Mr. Donner is being used in this one building, which will be open for use September 1939.

Two other gifts of Mr. Donner of \$10,000 each have made it possible to improve the campus. Trees, walks, and lights have been some of the improvements added.

Approximately one thousand people are responsible for the raising of the other \$250,000. This money will be used for a chair of music, a chair of business administration, two endowed scholarships, and for other specified purposes.

So Hanover College has advanced since 1827 into a larger, better institution. That progress is continuing and the future looks very bright.

ALBERT GEORGE PARKER, JR., B.D., Ph.D., LL.D.
President

HENRY WALTER BURGER, B. D., D. D.
Secretary-Registrar

ELLEN W. MOORE, M. A., Ph. D.
*Dean of Women and Associate Professor
of English and German*

LOUISA R. SHOTWELL, M. A.
*Dean of Women and Associate Professor
of English*

MARY LOUISE FITTON, B. S.
Librarian

WALTER DICKERSON HOGUE, A. B.
*Assistant to the President and Instructor
in English*

MRS. ALBERT H. WATTS, B. S.
Instructor in Education

HENRY M. LEE, A. B.
*Assistant Librarian and Manager of the
Book Store*

DOROTHY BREEDING, A. B.
Secretary to the President

LEONA SNYDER, A. B.
Assistant Secretary

FRANCES GABEL, A. B.
Library Assistant

GEORGE A. MAY, M. D.
College Physician



TOP ROW: W. D. Hogue, Parker, Burger, Lee.
SECOND ROW: Gabel, Snyder, Watts, Fitton,
Breeding.

ADMINISTRATION



TOP ROW: Zirkle, Watters, Poland, Van Liew.

SECOND ROW: Conklin, Hyatt, Westington, W. H. Moore, A. R. Hogue.

THIRD ROW: Guthrie, Kutz, Anderson, H. M. Meyer, French.

FOURTH ROW: Martin, May, Gardner, Fitton, E. W. Moore, B. M. Meyer.

JEAN JUSSEN ANDERSON, A. M.
Professor of French

GRANT T. WICKWIRE, M. S.
Professor of Geology

R. EARL MARTIN, M. S., Ph. D.
Professor of Physics

ARTHUR R. HOGUE, M. A., Ph. D.
Professor of History

DAVID G. FRENCH, B. D.
Professor of Religion

W. MAXWELL POLAND, B. S.
Director of Music

MRS. CECILE MARTIN MAY, A. B.
Instructor in Home Economics

MATILDA J. KORVER, A. M.
Instructor in German

NED GUTHRIE, M. S.
Professor of Chemistry

HERBERT A. MEYER, M. S., Ph. D.
Professor of Mathematics

WILLIAM H. MOORE, A. M., Ph. D.
Professor in Business Administration

GEORGE A. ZIRKLE, A. M.
Professor of Social Science and Psychology

VIOLA MITCHELL, A. M.
Director of Physical Education for Women

DON A. WATTERS, M. A.
Instructor in Speech

BLOOM MACGREGOR MEYER, A. M.
Instructor in English

PAUL CONKLIN, A. M., Ph. D.
Professor of English

RUSSELL M. KUTZ, A. M., Ph. D.
Professor of Education and Director of Teacher Training

JOSEPH L. HYATT, B. Ed., M. S.
Professor of Biology

MARS M. WESTINGTON, A. M., Ph. D.
Professor of Classical Languages and Literature

JOHN M. VAN LIEW, B. S., A. M.
Director of Physical Education for Men

EVELYN GARDNER, A. B.
Instructor in Physical Education

JAMES R. HINE, B. S. M. E., B. D.
Lecturer

F A C U L T Y

SENIORS



*The growth has been marked from a twig to a tree,
And the Senior stands alone.
May the tears and the cheers
Of his college life
Give him strength for the strife
That confronts him in future years.*

*May the buds of his knowledge ripen into the fruit
Of a prosperous and happy career;
As we gaze in the haze
Of his coming life
May it always be rife
With good thoughts of his Hanover days.*

—R.





President

HARRY HENRY

Vice-President

JERALDINE EWING

Secretary

MIKE KOVACIC

Treasurer

TOM YOUNG

HARRY HENRY Kokomo, Ind.

Beta Theta Pi

Senior President; Kokomo Junior College 1; Interfraternity Council 3, 4; Business Manager 1938 Revonah; Business Manager Triangle 4; Alpha Phi Gamma 3, 4; Hanover Players 2, 3, 4; German Club 2, 3, 4; Science Club 2, 3, 4; Football 2, 3; Track 2; Sphinx Club 3, 4.

MIKE KOVACIC Hendersonville, Pa.

Phi Gamma Delta

Geneva College 1; Intramurals 1, 2, 3, 4; German Club 2, 3, 4; Science Club 4; Varsity "H" Club 3, 4; Senior Treasurer.

FLORENCE ASPINALL Madison, Ind.

Alpha Delta Pi

W. A. A. 1, 2; French Club 2; Pan-Hellenic Council 3, 4.

ARLEEN BOLES Warsaw, Ind.

Phi Mu

Alpha Phi Gamma; French Club 1, 2; W. A. A. 1, 2, 3, 4; W. A. A. Board 3; Triangle Staff 2, 3.

MARGARET BRAND Seymour, Ind.

Phi Mu

W. A. A. 1, 2, 3, 4; Sportsgirl Staff 1, 2; W. A. A. Board 2, 3, 4.

GERALDINE EWING Bowling Green, Ky.

Alpha Delta Pi

W. A. A. 1, 2, 3; French Club 2; Women's Executive Committee 3; Gamma Sigma Pi 2, 3, 4; Sportsgirl Staff 1, 2; Senior Vice-President; Science Club 4.

TOM YOUNG Danville, Ill.

Phi Delta Theta

Football 1, 2, 4; Basketball 2, 3, 4; Baseball 1, 2, 3, 4; Track 1, 2, 3, 4; Intramurals 1, 2, 3, 4; Science Club 2, 3, 4; Glee Club 2, 3, 4; Varsity "H" Club 1, 2, 3, 4; Triangle Sports Editor 3; Senior Secretary.

BETTY BLACK Indianapolis, Ind.

Phi Mu

Hanover Players 4; W. A. A. 1, 2, 3, 4; W. A. A. Board 2; Choir 1, 2, 3; Glee Club 3, 4; French Club 2.

FLOYD BOWERMAN South Bend, Ind.

Independent Men 3, 4; Classic Club 3, 4; Sphinx Club 3, 4; Choir 1, 2; Glee Club 3, 4; Alpha Phi Gamma 4; Ministerial Club 1, 2, 3, 4; Triangle Staff 3, 4; Track 1, 3, 4; Intramurals 1, 2, 3, 4; Y. M. C. A. Cabinet.

JANE CUTTER Aurora, Ind.

Independent Women; German Club; W. A. A. 3, 4; Sportsgirl Staff 4; French Club 4; Triangle Staff 4; Alpha Phi Gamma 4.



SENIORS

SENIORS



DON CARVIN Columbus, Ind.

Sigma Chi

Gamma Sigma Pi 4; Intramurals 2, 3, 4; French Club 2; Science Club 1.



CAROLYN DEJEAN Salem, Ind.

Alpha Delta Pi

W. A. A. 1, 2, 3, 4; W. A. A. Board 2; Editor Sportsgirl 3, 4; Alpha Phi Gamma 3, 4; Gamma Sigma Pi 1, 2, 3, 4; Kappa Pi Beta 3, 4.



BARBARA EBERSOLE South Bend, Ind.

Phi Mu

Choir 1, 2, 3, 4; Glee Club 3, 4; Latin Club 3, 4; German Club 2, 3, 4; Y. W. C. A. Cabinet 3, 4; Hanover Players 3; Dormitory Council 3.



RUSSELL FERRELL Kansas City, Mo.

Phi Gamma Delta

Triangle Staff 1, 3, 4; Associate Editor 4; Alpha Phi Gamma 4; Intramurals 1, 2, 3, 4; Baseball Mgr. 1; Camera Club President 3, 4; German Club 4; Interfraternity Council 3.



RUTH HANNA North Vernon, Ind.

Independent Women 1, 2, 3, 4; French Club 1, 2, 3, 4; Classic Club 3, 4; Alpha Phi Gamma 3, 4; Triangle Staff 2, 3, 4; Women's Executive Council 4; Dormitory Council 4.

MARTHA BUNCH Newcastle, Ind.

Alpha Delta Pi

W. A. A. 1, 2, 3, 4; W. A. A. President 3, 4; Glee Club 3, 4; Choir 1, 2, 4; Women's Executive Committee 1, 2, 3, 4; Triangle Staff 3, 4; Revonah Staff 3; Sportsgirl Staff 1, 2, 3, 4; Freshman Debates.

CLAIRE DAWSON Valparaiso, Ind.

Phi Mu

W. A. A. 1, 2, 3, 4; W. A. A. Board 3, 4; Classic Club 3, 4; Independent Women 1, 2, 3; Women's Executive Committee 3; Religious Vocation Club 1; Sportsgirl Staff 2, 3, 4.

VAUGHN DRAKE Shelbyville, Ind.

Phi Gamma Delta

Alpha Phi Gamma 4; Varsity "H" Club 2, 3, 4; Baseball 1, 3, 4; Intramurals 1, 2, 3, 4; Interfraternity Council 3, 4; German Club 1, 2, 3; Varsity Football Mgr. 1, 2.

MARGARET FLORA Logansport, Ind.

Alpha Delta Pi

French Club 2; Glee Club 4; Hanover Players 2, 3, 4; W. A. A. 1, 2; Soccer Varsity 2.

MARGARET JOHNSON Fowler, Ind.

Phi Mu

Freshman Debates; French Club 2, 3; Gamma Sigma Pi 2, 3, 4; Dormitory Council 3; Hanover Players 4; W. A. A. 1, 2, 3.

PHIL JOHNSTON Wyoming, Ohio

Beta Theta Pi

Denison University 1, 2, 3; International Relations Club 4; French Club 4; Fall Forum 4; Intramurals 4.

GILBERT LAUE Gary, Ind.

Phi Gamma Delta

Freshman Debates; Choir 1, 2, 3; Hanover Players 2, 3, 4; Glee Club 2, 3, 4; German Club 2, 3; Cir. Mgr. Triangle 2; Student Council 3, 4; Y. M. C. A. Cabinet 2, 3, 4; Science Club 2, 3, 4; Gamma Sigma Pi 4; Varsity Debate 3; Intramurals 4.

ROBERT MILLER Cincinnati, Ohio

Phi Gamma Delta

Triangle Sports Editor 2; Triangle Editor 4; Revonah Editor 3; French Club 1, 2; Intramurals 1, 2, 3, 4; Track 1, 3; Alpha Phi Gamma 3, 4; Gamma Sigma Pi 4; Glee Club 2, 3, 4; Sphinx Club 3, 4; Student Council 4; Interfraternity Council 2, 3, 4.

ALYCE McKESSON Plymouth, Ind.

Alpha Delta Pi

French Club 2; W. A. A. 1, 2; Revonah Staff 3; Glee Club 3, 4.

DOROTHY PORTER Hanover Ind.

Alpha Delta Pi

W. A. A. Board 1; German Club 2, 3, 4; Women's Executive Board 2, 3, 4; Glee Club 4.

ROBERTA JONES Norwood, Ohio

Alpha Delta Pi

W. A. A. Board 1, 2, 3, 4; French Club 1; Glee Club 3, 4; Choir 1, 2, 4; Dormitory Council 2, 3; Revonah Staff 3.

BEN JUDD Cincinnati, Ohio

Theta Kappa Nu

University of Denver 1, 2; Y. M. C. A. Board 3, 4; Student Council 3; Interfraternity Council 3, 4; Hanover Players 3, 4; Intramurals 3, 4.

LANIER McKEAND Hanover, Ind.

Phi Gamma Delta

Varsity "H" Club 3, 4; Intramurals 1, 2, 3, 4; Science Club 3; Basketball 1, 2, 3, 4; Football 1; Track 1, 2, 3.

JAMES McMANAMAN Lawrenceburg, Ind.

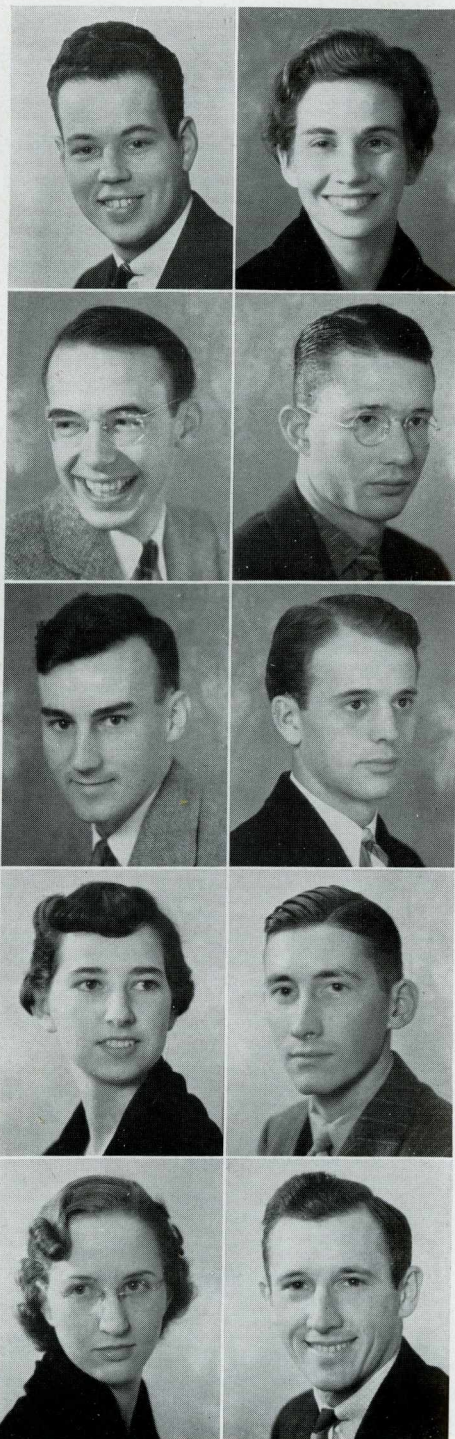
Sigma Chi

Indiana University 1; Intramurals 2, 3, 4; Science Club 2, 3; Interfraternity Council 3, 4; Baseball 3, 4; Varsity "H" Club 4; Bat Club 4.

ROBERT McNEAL Tipton, Ind.

Sigma Chi

Interfraternity Council 3, 4; Student Council 3; Bat Club 4; Science Club 2, 3, 4; Triangle Staff 1, 3.



SENIORS

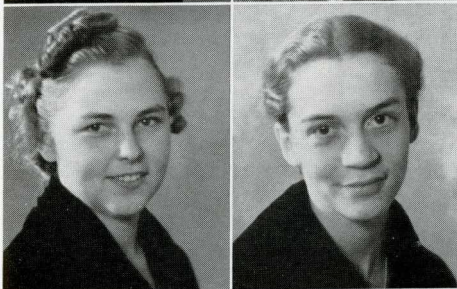
SENIORS



MIRIAM MORELAND North Bend, Ohio

Phi Mu

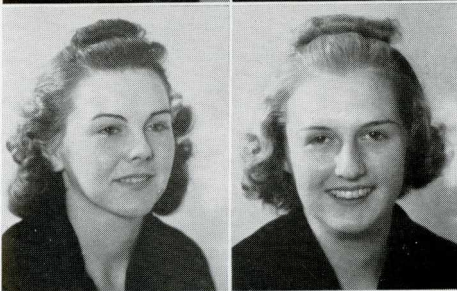
Choir 3, 4; Glee Club 3; Education Club 1 2; President of Dormitory 3; Student Council 3, 4; Student Council President 4.



LOIS PURDY Wabash, Ind.

Alpha Delta Pi

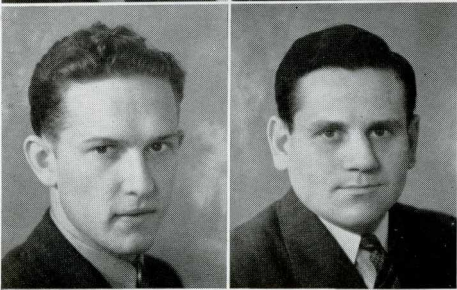
W. A. A. 1, 2, 3, 4; W. A. A. Board 3, 4; French Club; German Club; Gamma Sigma Pi; Hanover Players; Scholarship Cup 1, 2, 3; Freshman Debates.



ALICE ROBINSON Hamburg, N. Y.

Alpha Delta Pi

W. A. A. 1; Triangle Staff 2, 3, 4; Alpha Phi Gamma 2, 3, 4; Glee Club 4; French Club 2.



JAMES RANKIN Hanover, Ind.

Phi Gamma Delta

Glee Club 2, 3, 4; German Club 2, 3; Classic Club 3, 4; Science Club 3; Ministerial Club 1, 2, 3, 4; Intramurals 1, 2, 3, 4.

WILLIAM PERKINS North Bend, Ohio

Phi Delta Theta

Varsity "H" Club 3, 4; Revonah Staff 3; Glee Club 2, 3; Football 2, 3, 4; Baseball 2, 3, 4; Intramurals 1, 2, 3, 4; French Club 1, 2.

GWEN POULTON Hobart, Ind.

Independent Women 1, 2, 3, 4; Hanover Players 1, 2, 3, 4; Choir 1, 2, 3, 4; Glee Club 4.

JEANETTE TURNER Madison, Ind.

Alpha Delta Pi

W. A. A. 1, 2; French Club 2, 3, 4; Pan-Hellenic Council 2, 3; Glee Club 4.

ARTHUR TANCL Chicago, Ill.

Phi Gamma Delta

Freshman President; Advertising Mgr. Triangle 3; Business Mgr. Triangle 4; Football 1, 2, 3, 4; Varsity "H" Club 2, 3, 4; Intramurals 1, 2, 3, 4; Glee Club 2, 3, 4; German Club 2, 3, 4; Science Club 2, 3, 4; Interfraternity Council 3; Choir 1, 2; Track 1, 2; Baseball 1, 2; Camera Club 3, 4.

Not Pictured

CURTIS HODGENS Eden, Alabama

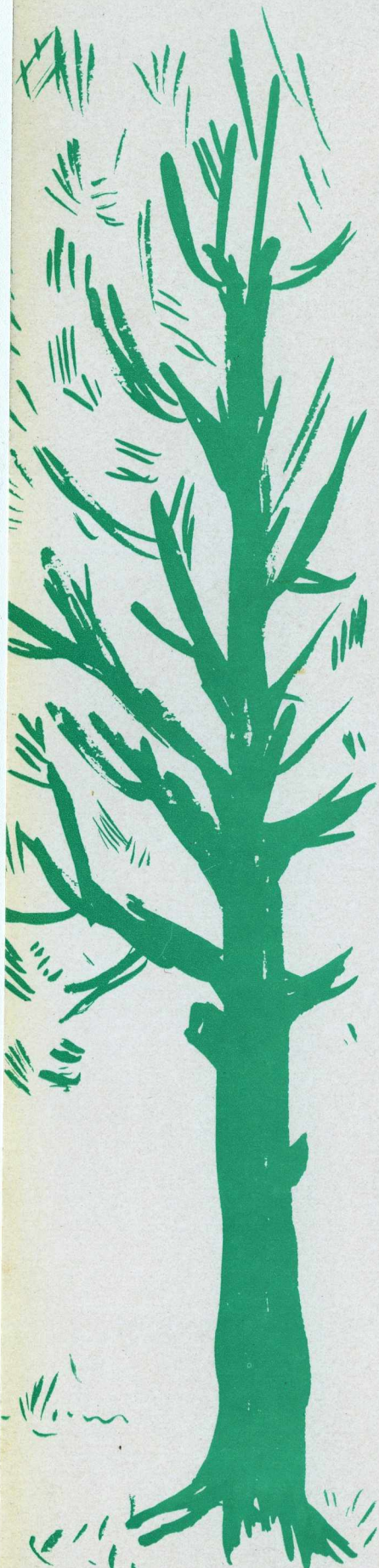
Sigma Chi

Wayne University; Varsity Debates; Glee Club; Choir; Football; Science Club; French Club; Sphinx Club; Triangle Staff.

Not Pictured

BETTY SHELBY Charlestown, Ind.

J U N I O R S



*Now the Junior is different; he's reached the proud
state*

Where he ranks as an upperclassman.

He can rest with a zest

In this calm interlude

Which he now can conclude

Comes before the last year which is best.

The only bright spot in his life of ease

Is the opulant Junior Prom.

It is right that the light

Of Fame will shine,

At least for a time

On the Junior who rules for a night.

—R.



President

WARNER SHUGERT

Vice-President

ADA E. MARTIN

Secretary

GEORGE BELL

Treasurer

GEORGE PALMER

TOP ROW (left to right)

WARNER SHUGERT
Oxford, Ohio

ADA MARTIN
La Porte, Indiana

GEORGE PALMER
Lebanon, Indiana

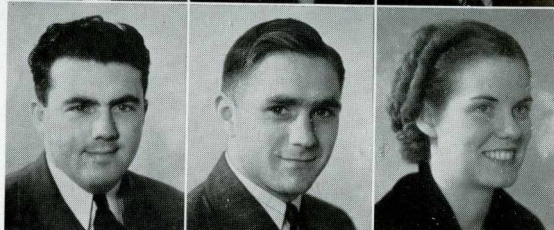


SECOND ROW (left to right)

RICHARD ACHBERGER
Elkhart, Indiana

GEORGE BELL
Connersville, Indiana

DOROTHY ALLISON
Gardner, Illinois

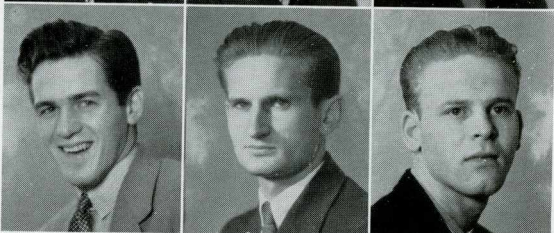


THIRD ROW (left to right)

WILLIAM BARNES
Winchester, Indiana

JAMES BAKER
Nebraska, Indiana

ROBERT BJORN
Park Ridge, Illinois

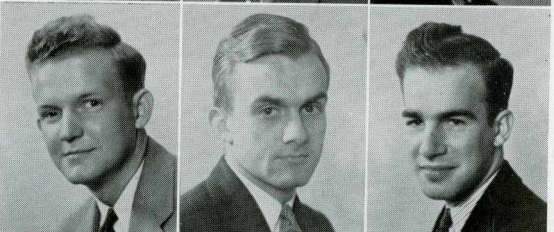


FOURTH ROW (left to right)

FRANK AULL
Cincinnati, Ohio

HENRY BAUMANN
Dayton, Ohio

CHARLES BARNETT
Fort Wayne, Indiana



FIFTH ROW (left to right)

FRED BLUM
Newcastle, Indiana

DONNA BOONE
Warsaw, Indiana

STUART BOYER
Otto, Indiana



J U N I O R S

J U N I O R S

TOP ROW (left to right)

BARBARA DEES
Jackson, Michigan

REX DENDINGER
Boonville, Indiana

VERDA ELLIOTT
Lansing, Michigan

MARY LOUISE FRANCISCO
Madison, Indiana

RUHAMAH HANNAH
Bloomfield, Indiana

SECOND ROW (left to right)

ROBERT GETTINGER
Anderson, Indiana

HOWARD GILLILAND
Cross Plains, Indiana

JAMES GRIFFIN
Salem, Indiana

ADOLPHE GRIGAS
Chicago, Illinois

ELVIN HIGDON
Indianapolis, Indiana

THIRD ROW (left to right)

LAURA HUBER
Hanover, Indiana

DAVID HINE
Indianapolis, Indiana

RUTH HUSBAUER
Chicago, Illinois

RICHARD LUTZ
Indianapolis, Indiana

BETTY JEAN McKAMEY
Indianapolis, Indiana

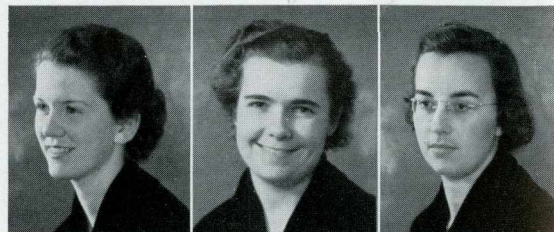


TOP ROW (left to right)

JUDITH McTURNAN
Indianapolis, Indiana

LOUISE MARTIN
Hanover, Indiana

JANE NAGEL
Liverpool, Ohio



SECOND ROW (left to right)

DAN MILLER
Princeton, Indiana

ROBERT MOORHEAD
Fort Wayne, Indiana

JANE MENKE
Jackson, Michigan



THIRD ROW (left to right)

RICHARD NEWTON
Vevay, Indiana

ROBERT ONG
Cincinnati, Ohio

STANLEY PALM
Chicago, Illinois

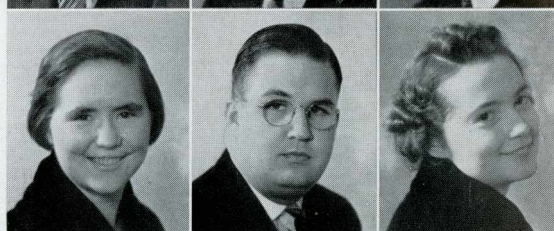


FOURTH ROW (left to right)

ANNA MARGARET PENDER
Hanover, Indiana

JAMES PURKHISER
Mitchell, Indiana

CYNTHIA PENDLETON
Madison, Indiana

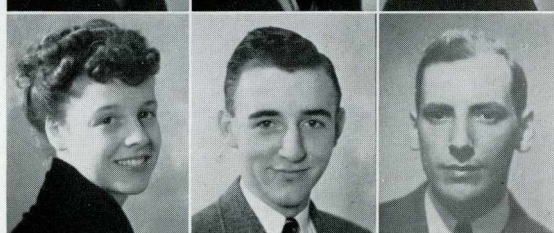


FIFTH ROW (left to right)

JEANNE ANN PLUESS
Indianapolis, Indiana

ROBERT ROUEN
Goshen, Indiana

RICHARD RUDELL
Kokomo, Indiana



JUNIORS

J U N I O R S

TOP ROW (left to right)

JOHN CHAPPELL
Petersburg, Indiana

ROBERT BROCKLEHURST
Charlestown, Indiana

ROBERT CARR
LaGrange, Illinois

WARREN PRUETT
French Lick, Indiana

WILLAMAE SHIREY
Hanover, Indiana

SECOND ROW (left to right)

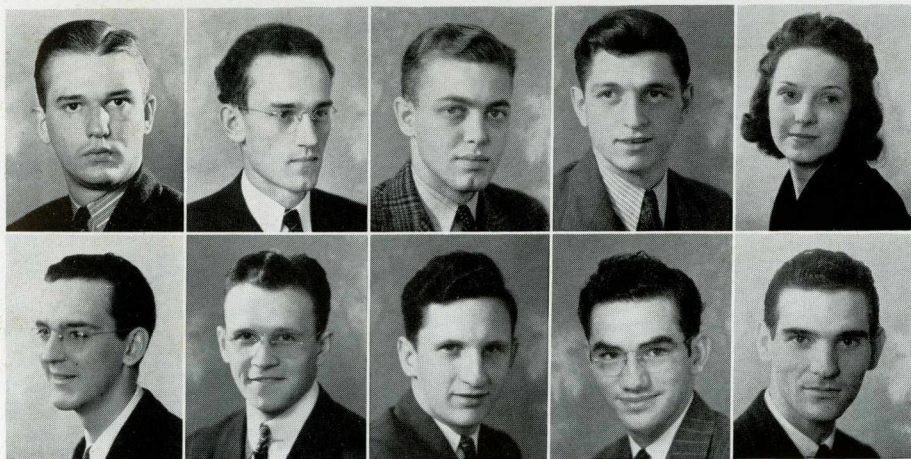
CHARLES SNYDERS
Chicago, Illinois

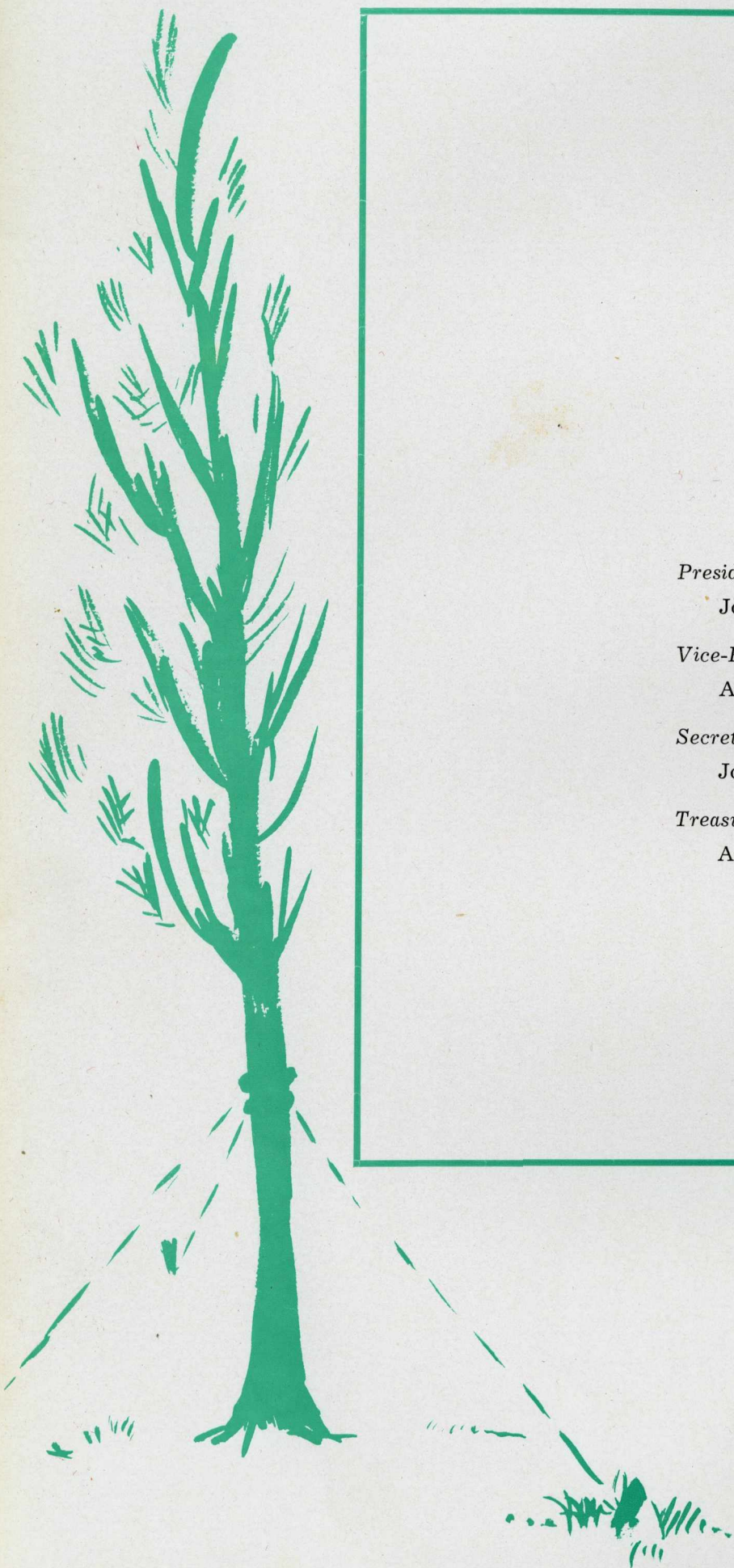
EDMOND TILLEY
Lexington, Indiana

CARL WEATHERBEE
Michigan City, Indiana

CHARLES WHITE
Columbia City, Indiana

MAX WILLS
Anderson, Indiana





President

JOHN TAYLOR

Vice-President

ANNE CONARTY

Secretary

JOYCE CALDWELL

Treasurer

ALLAN JACKSON



TOP ROW: Wilcox, Cox, Wakefield, Latting, Jackson, Shirley.
 SECOND ROW: Moore, Alton, Lowell, Williams, Ward, Mathews, Carmichael.
 THIRD ROW: Eyler, Taylor, Wilson, Medcalf, Ryker, Miller, Corman, Pendleton.
 FOURTH ROW: Alvis, Evans, Berkey, Lawrence, Rosebrock, Hartwell, Long, Clayton.
 FIFTH ROW: Tafflinger, Woods, Erni, Johnston, Katterhenry, McDaniel, Craig, Swift.
 SIXTH ROW: Owings, Wildman, Gullion, Nichols, Angne, May, Noland, Logan.

*The Sophomore has given a year to the past;
 To memory and retrospect.
 Like the tree he now sees
 A new ring on his growth
 And by now he is loath
 To abandon his search for degrees.*

*He has skinned up his bark at the Freshman-Soph
 fight;
 The "circle" has added prestige;
 To the prof he's a "Soph"
 And regarded as such
 He's not rated as much,
 But those little green caps are still doffed.*

—R.

S O P H O M O R E S



President

JAMES MITCHELL

Vice-President

BETTY MILLER

Secretary

MIRIAM COMMONS

Treasurer

CHARLES NICHOLS





TOP ROW: Copeland, Olmstead, Green, Reed, Farley, Bergdahl, Smitha, Pender.
 SECOND ROW: Watkins, Boyer, Cowan, Neff, Sheppard, Jones, B. Gable, N. Kessler, W. Gable, I. Young, Hill, Wright.
 THIRD ROW: Vargas, Aikin, Grinstead, Nichols, Shifman, Faith, Chamberlain, De Rossette, Taggart.
 FOURTH ROW: Earhart, Wallace, Demaree, Mulford, Moore, Cupp, Newcomer, Royce, Breeding, Carson.
 FIFTH ROW: Smith, Hill, Lyle, Moore, Martin, Allee, Millis, Watts, Powell, Bowton.
 SIXTH ROW: Shannon, Spacke, Miller, Bacon, Shacklette, Ogden, Bell, Nance, Downey.
 SEVENTH ROW: Banta, Barker, Avegno, Pic, Kirkpatrick, Westover, McKay, A. M. Kessler, Treasure, Warstler.

*Air and the soil and light from the sun
 Are the life of living things;
 But the trees have just these,
 While the souls of men
 Need the breadth and ken
 That material goods can't appease.*

*Their food is the culture of all mankind,
 The wisdom of other men,
 For their deeds are the seeds
 Of the future growth
 And the filling of both
 Their mental and spiritual needs.*

*And so, like the sapling, frail, tender and green,
 The Freshman is placed in our midst.
 Through the year he will toil,
 In a weakly, vague way,
 For a glimpse of the day
 When the tree springs full-limbed from the soil.*

—R.

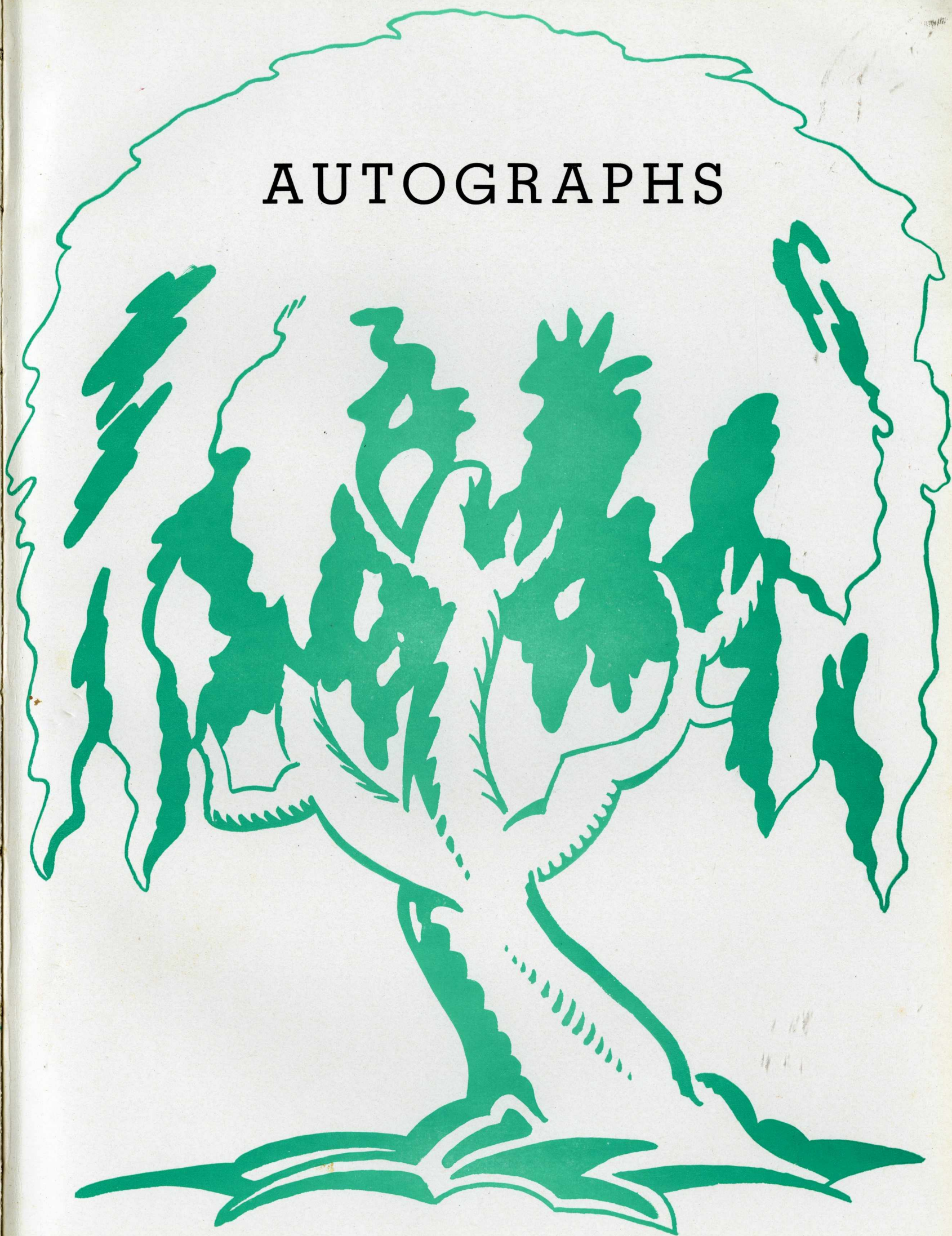
F R E S H M E N



TOP ROW: Hill, Kalb, Schnaiter.
 SECOND ROW: Wolf, Pogue, LaPado, Forrest, Smith, Kessler, Reinschreiber, Richmond.
 THIRD ROW: Griffith, Ross, Nichols, Shannon, Wendt, Faith, Ellsworth, Cowan.
 FOURTH ROW: Felix, MacGregor, Addison, Clever, Krauspe, Miller, Shifman.
 FIFTH ROW: Modesitt, Razelton, Chappe, Hile, Copeland, Brunner, Collier, Warner, McCormick, Lowe.
 SIXTH ROW: Ronald, Crum, Orschel, Breeding, Malone, Young, Mitchell, Tolen.
 SEVENTH ROW: Taggeson, Miller, Gompf, Goes, Schan, Wood, Shearin, Pluess, Sullenger, Martinella,
 Hill.



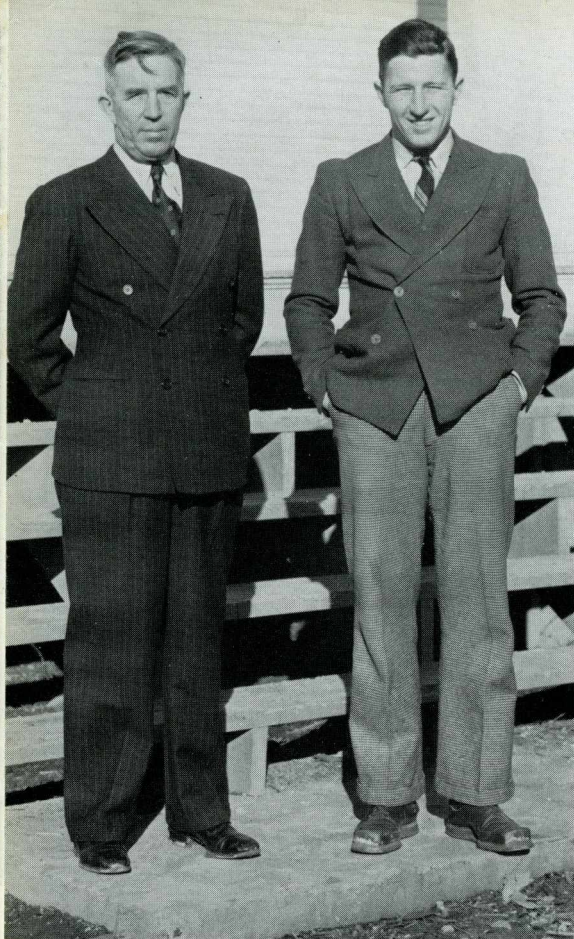
AUTOGRAPHS



Athletics



FOOTBALL - BASKETBALL - TRACK



COACH JOHN M. VAN LIEW
ASSISTANT COACH ROBERT WILKINSON

No better compliment can be paid to a coach than to say that he has turned out consistently victorious teams. We can pay that compliment to Coach Van Liew. During the seven years of his service at Hanover his various teams have triumphed in well over half of their contests. Perhaps this does not appear to be an outstanding achievement. But let us consider the relevant circumstances. Hanover plays comparatively much larger schools than herself. She is forced to pick a team from approximately one half as many men as other schools can utilize. Furthermore, Hanover is handicapped by an inadequate athletic endowment. Her equipment and playing grounds have been inferior to rival schools. Truly, Van has succeeded in the face of difficulties which would have daunted a less persistent figure.

Are the contributing factors to Van's success excellent material to work with; the best in modern equipment; the inspiration of huge crowds; the mediocre ability of opposing teams? The answer is emphatically, no! He takes what he gets and does the best he can with it. Probably he would have liked for his teams to play in huge stadiums and to wear the latest and finest equipment available. But, since these things were not to be had, he merely shrugged his shoulders and proceeded to win another victory on old Woods Field! Thus, Hanover has long held her head high in athletic competition, because her guiding star is a man who laughs at the predictions of experts, and has consistently produced winning combinations where theoretically they just couldn't exist.

F O O T B A L L

Starting out a whirlwind season on the gridiron, the Panthers held Wabash to one first down in winning their opening game from the Cavemen, thumped Central Normal 25 to 0 in the second time out, and bested Indiana State 12 to 6 to go into the Homecoming contest one of the two undefeated and untied teams in the state.

Leading the conference and playing before the largest Homecoming crowd in the history of Hanover College, the Hilltoppers played "heads-up" ball in taking Franklin 19 to 13. Ball State had too much power as they knocked the Panthers from the undefeated list with a 19 to 0 decision the next time the Van Liew men took the field.

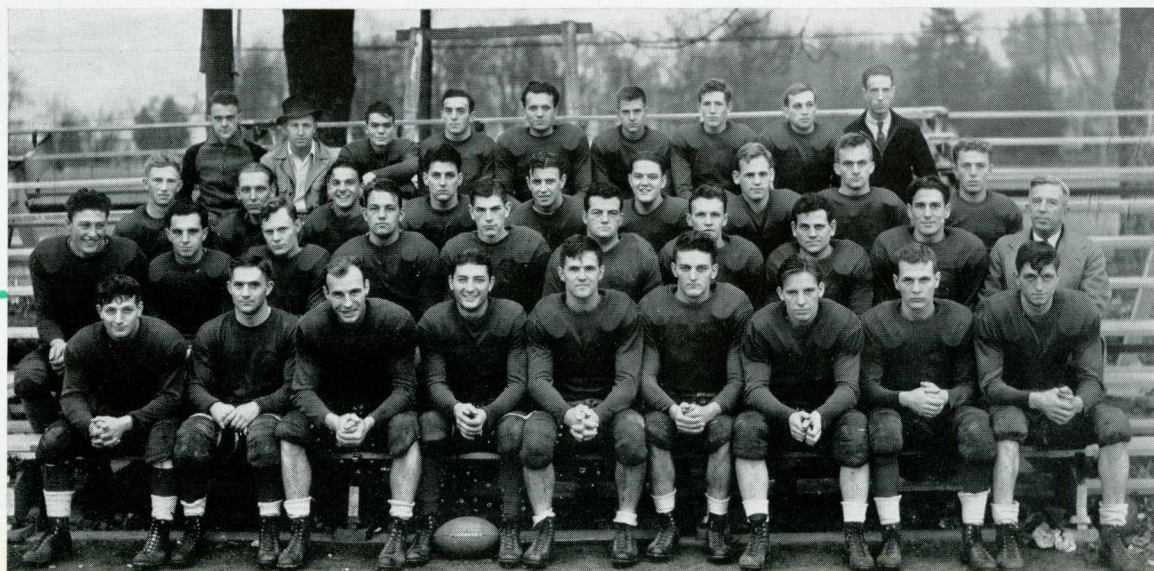
The Hanover squad bounced back the next weekend, nosing out the University of Louisville in a 14 to 13 struggle in which the point-after-touchdown decided the game. In the last competition of the year, the Red and Blue dropped a muddy battle to the Evansville Aces for their second loss of the season. The Panthers finished in a tie with DePauw and Rose Poly for fourth place in the Indiana Collegiate Conference.

Since only two of the sixteen lettermen will be lost by graduation this year, Hanover's football stock is bound to go up even more than it did this year with a record of five victories in seven starts.

1938 RECORD

Hanover 14—Wabash 6
 Hanover 25—Central Normal 0
 Hanover 12—Indiana State 6
 Hanover 19—Franklin 13
 Hanover 0—Ball State 19
 Hanover 14—University of Louisville 13
 Hanover 0—Evansville 8

TOP ROW (left to right): Kyle, Wilkinson, Sillman, Reinschreiber, Kemf, Richmond, Ronald, Henderson, Green.
 SECOND ROW (left to right): Stein, Wright, Clever, Kohlmeier, G. Johnston, C. Davis, Faith, Baumann, J. R. Johnson.
 THIRD ROW (left to right): Price, Perkins, Miller, Smith, J. Davis, Newton, Tilley, Tancl, Briscoe, Coach Van Liew.
 FOURTH ROW (left to right): Isley, Bell, Hine, Young, Anders, Dendinger, Newcombe, Gettinger, Pruett.



BELL, Guard
 "Ding Dong" Bell played his third year on the Panther varsity as a blocking back after spending the first two years at guard. Bell, a junior, kicked the points-after-touchdowns for the Hill-toppers.

PRUETT, End
 "Pluto" Pruett plays football with the same spirit and drive which has made him a star on the basketball court. We're glad to have Pruett with our team for another year.

YOUNG, Back
 Another senior who will be missed considerably in the Panther lineup in years to come is Tom Young who was a good running back this season. Tommy will be remembered for his quick kicks.

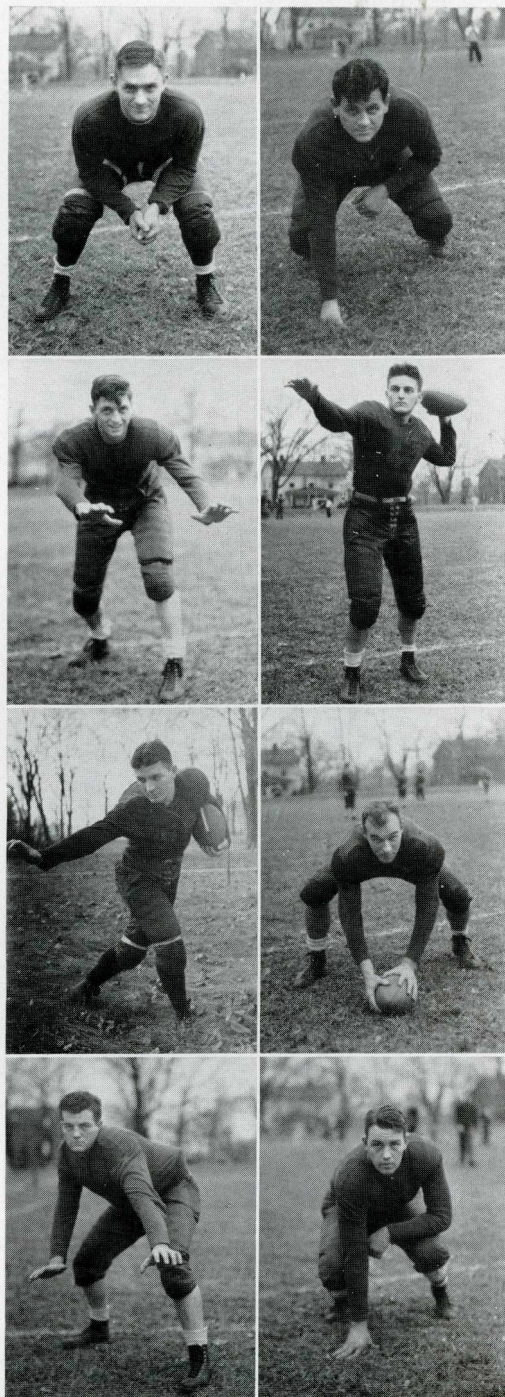
NEWTON, Tackle
 "Turp" Newton was hampered by injuries most of the year, but he managed to turn in some good performances. Newton plays regular tackle on the right side of the line.

TANCL, Guard
 Art Tancl played his third and last year on the Hanover eleven at guard. Tancl's hard blocking made possible more than one Panther gain. Art will be lost by graduation.

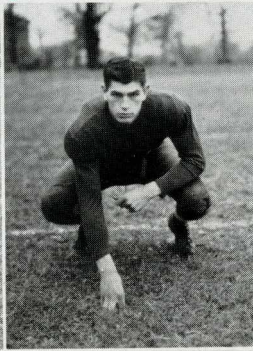
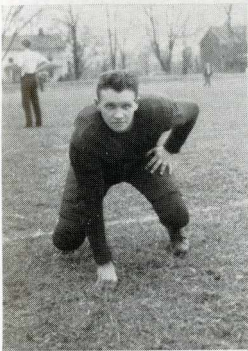
DENDINGER, Quarterback
 Rex Dendinger led the Hanover team from the tail-back position with his fine running and passing. Dendinger, who will be back for another season, was rated "All-Conference" quarterback on the Associated Press selection this year.

HINE, Center
 "Mush" Hine filled the center position in every quarter during the 1938 campaign, pulling back to do the kicking, calling signals, and generally making himself invaluable to the Hanover offense.

SMITH, Tackle
 Another "All-State" man in the Panther roster is big Don Smith, 245 pounds of tackle for the Van Liew men. Smitty can make the opposing linemen wish they were out for ping-pong instead of balking his charges.



F O O T B A L L

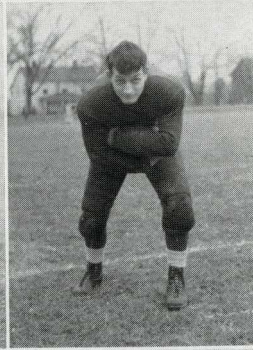
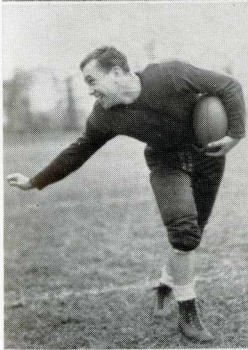


TILLEY, Guard

Ed Tilley has been out for the squad for three years and has played good football at guard the last two seasons. Ed comes in handiest when a tight defense is needed.

DAVIS, Tackle

Jim Davis is a sophomore who is coming along so as to reassure Hilltopper fans that Hanover is not weak at the very important tackle posts. Davis is six-foot-four and weighs 195 pounds.

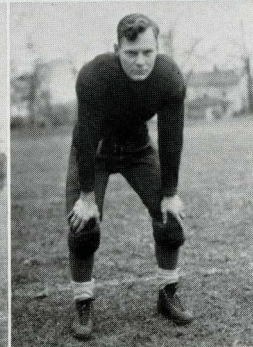
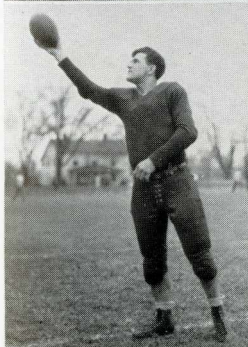


HENDERSON, Back

Bob Henderson, one of the two freshmen on the team, made up for his lack of weight with the pep and fight he exhibited on the gridiron for the Panthers. Henny will come in handy next year.

ISLEY, Back

"Ikey" Isley was shifted from guard to half-back to make up for this year's shortage of blocking backs. Bill is only a sophomore, so he is expected to have two more good seasons with the Red and Blue.

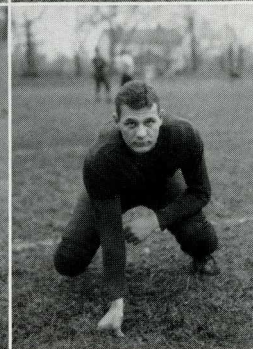
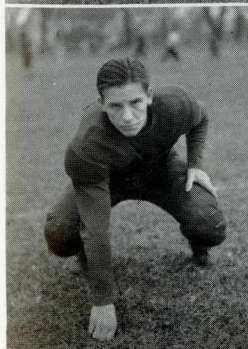


ANDERS, End

Les Anders played even better this year than he did last as he scored several times after passes from Dendinger, and played good defensive ball at left end without relief the entire season.

MILLER, Back

"Red" Miller was another man who has been troubled by injuries and sickness. Miller is fast on his feet and is a dangerous tackler. Red alternated with Bell and Isley in the half-back positions.

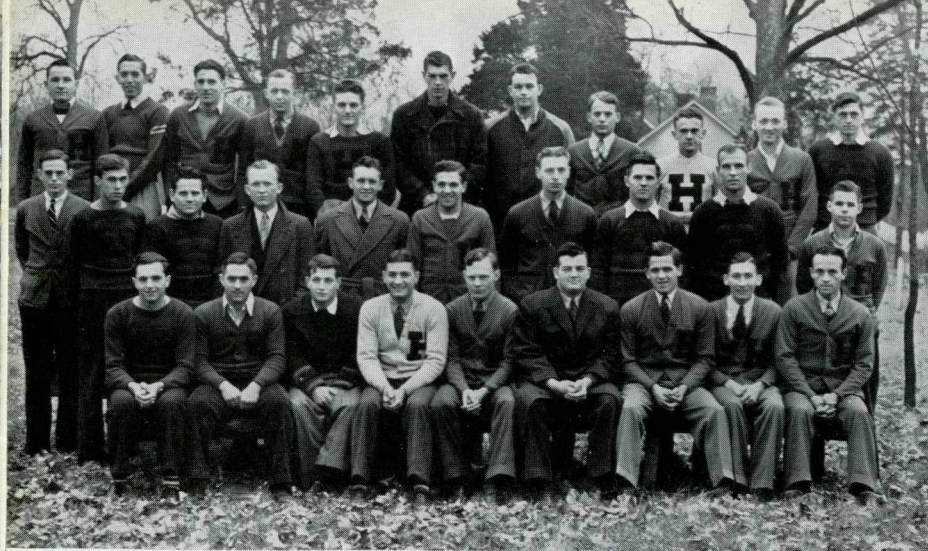


NEWCOMBE, Guard

Bob Newcombe, one of the two freshmen on this year's team, saw plenty of action and shows promise for the three years more he will be eligible to wear the Panther uniform.

GETTINGER, Guard

Bob Gettinger showed great improvement over previous seasons as he held down a starting position in practically every game and performed capably at all times.



TOP ROW: Wolf, Griffin, Briscoe, Blum, Den-
dinger, Davis, Smith, McKeand, Kyle, Gilli-
land, Pruett.

SECOND ROW: Shugert, Tull, Tancl, Drake, Til-
ley, Lowell, Grigas, Anders, Hine, Taylor.

THIRD ROW: Perkins, Bell, Isley, Young, Miller,
Newton, Barnes, McManaman, Kovacic.

Varsity "H" Club membership is made up of letter-
men in any of the various varsity sports at Hanover.
As a project, the group has sponsored and controll-
ed the men's intramural program for the past two
years with a high degree of success.

Each fall the "H" men are active in the freshman-
sophomore fight and are otherwise responsible for
the "breaking in" of the freshmen students to Han-
over traditions. This strong organization of the se-
lect athletes in the college makes possible more
impartial supervision of sports events between or-
ganizations on the campus. This group sponsors the
Homecoming dance every year as one of its activi-
ties.

This year Ed Hine was president of the club and
Warren Pruett was secretary-treasurer.

1938-39 SEASON

Hanover 61—Louisville 38
Hanover 34—Indiana Central 39
Hanover 40—Valparaiso 42
Hanover 35—Oakland City 25
Hanover 44—Evansville 34
Hanover 43—Indiana Central 36
Hanover 58—Joliet 37
Hanover 43—Anderson 42
Hanover 56—Louisville 39
Hanover 69—Earlham 43
Hanover 74—Central Normal 26
Hanover 41—Evansville 48
Hanover 38—Oakland City 42
Hanover 25—Central Normal 41
Hanover 43—Anderson 32

VARSITY 'H' CLUB

B A S K E T B A L L

The fates smiled pleasantly on John Van Liew and his group of hardwood stars this season. Out of fifteen games, the Panthers won ten and lost five. Many of these encounters were won by extremely lop-sided scores, while our severest loss was by the comparatively small margin of sixteen points. Only two home games were dropped, both teams with good records.

Hanover's quintet boasted two pace-setters in famed Hoosier basketball, this year. Pruett scored the highest average number of points for games played, and attained a position on the all-state five. Tom Young set a record this season for the number of individual points scored in one game.

Prospects for next year are very bright indeed. We lose only two men by graduation. Four members of the first five will return. Warren Pruett and Dave Hine, lettermen for three years, will be back next season for their fourth consecutive year of varsity competition. Unless haunted by the proverbial jinx, Hanover can reasonably expect to lose very few games next year.

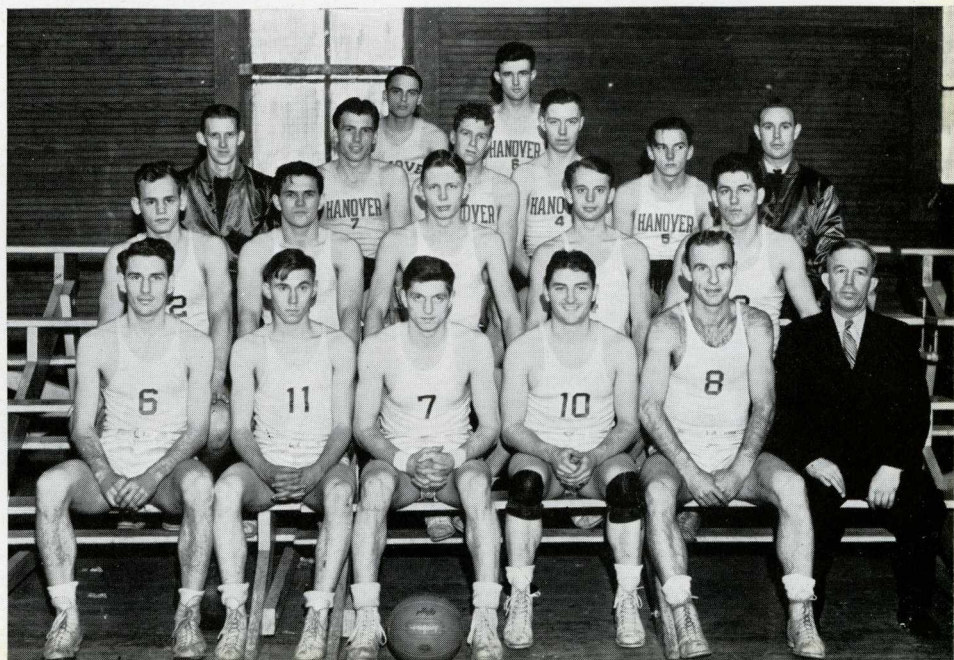
Let us tender a brief note of thanks to the man whose shrewdness, booming voice, and stern personality have guided the footsteps of Hanover's athletes for seven years. In final relation to the team's success, let us not forget the gift of a certain much abused group on the Hanover campus; what would the team have been without the shining new satin uniforms which the Student Council presented to them?

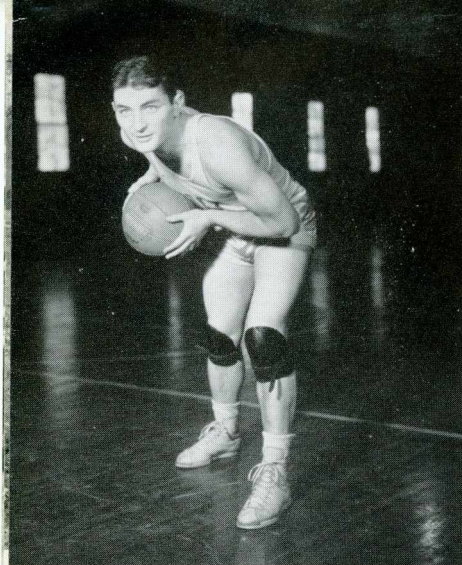
TOP ROW: Addison, Warriner.

SECOND ROW: Jordan, Rork, Earhart, Pender, Clever, Meyer.

THIRD ROW: Faith, Anders, Downey, McKeand, Kohlmeier.

FOURTH ROW: Briscoe, Tull, Pruett, Young, Hine, Van Liew.

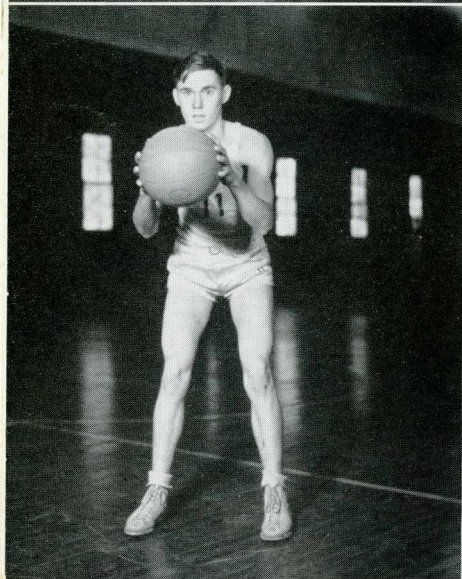




TOM YOUNG

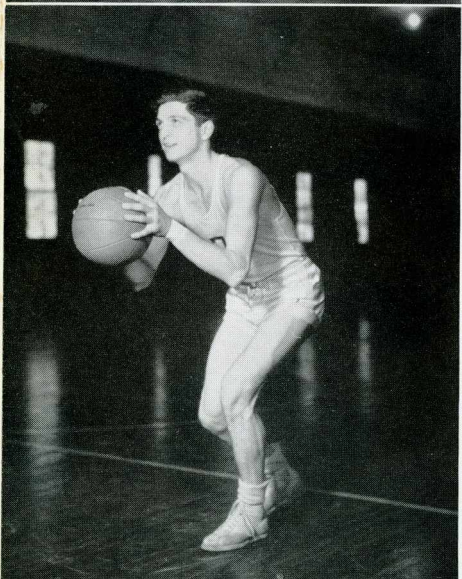
A chunky, speedy, little forward, Young squirmed and wiggled his way through the legs of towering opponents to place second on the Hanover five, with regard to points scored. Averaging over twelve points per game, Tommy finished the season well up in the top bracket of the Indiana Conference scoring race. His performance this season was climaxed by a sensational thirty-two point individual scoring spree in the Central Normal home game. This aggregate for one game set a record this year on Indiana basketball hardwoods.

Tommy is a senior this year, a fact which brings gloom to the minds of Hanover's well-wishers. His absence will create a gap which will be difficult to fill.



CLARENCE TULL

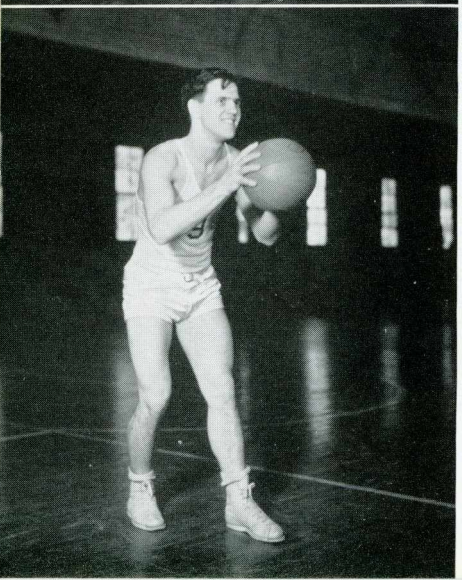
Tull stepped out of Hanover High School to immediately fill a vacancy on the college varsity five. Of slight build, and rather deceptive appearance, "Toots" is an aggressive and capable forward, whose combined defensive and offensive ability constituted no small factor in Hanover's success this season. His aim from the side line is deadly, almost invariably resulting in two points. His primary offensive work this season was collaboration with Young on the "fast break", plus highly effective individual action. He, too, was a wide awake defensive player, converting every opportunity of seizing the ball into a favorable advantage.



WARREN PRUETT

Center, and leading scorer of the Panther five, "Pluto" turned in an impressive season. His sparkling floor play and unerring accuracy were the spearhead of the Hanover offense. A consistently effective player, the lad from French Lick amassed a total of fourteen points a game. For the comparative number of games in which he participated, this was the highest individual average in the state.

Pruett's outstanding ability earned for him, a position on the all-state Hoosier five this season. Unquestionably, he is one of the greatest ball players Hanover has ever produced.



LESTER ANDERS

A scrapping forward, "Andy" surprised everyone with his great improvement this year. Just failing to earn a letter last year, he came back this season to easily merit a position on the varsity squad. A fighting, hard-driving player, the "Tiger" scored a considerable number of points. If he continues to improve at the present rate, Hanover's prayer for a player to take senior Tommy Young's vacated position will be answered.

Anders is a sophomore this year. Thus, we can expect to see him on the basketball court for at least two more years.

DAVID HINE

What Pruett did for the Hanover offensive, Hine has done for the defense. Primarily a guard, Hine's work in retrieving the ball from the backboard and in breaking up the opposing offense was beyond reproach. Adversaries soon learned to respect Dave's ability, although he is not of exceptional height or weight. A very clever ball handler, Hine commands the praise and respect of Hanover's basketball fans.

The "Ol' Man" has another year with the Panthers, which fact speaks well for the chances of a good team next year. As a defensive player Dave also qualifies for all-state honors, provided no rule is evoked barring bald-headed players.

ROBERT BRISCOE

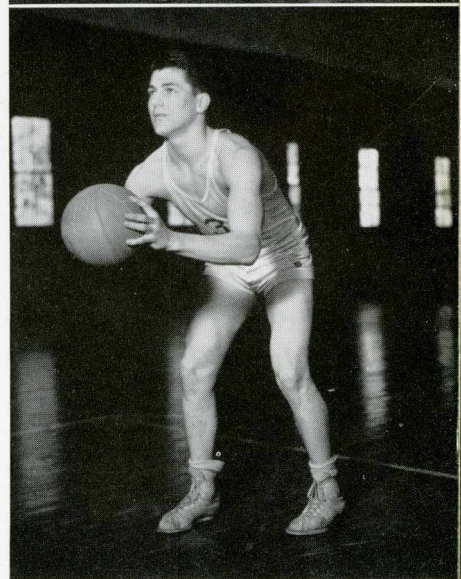
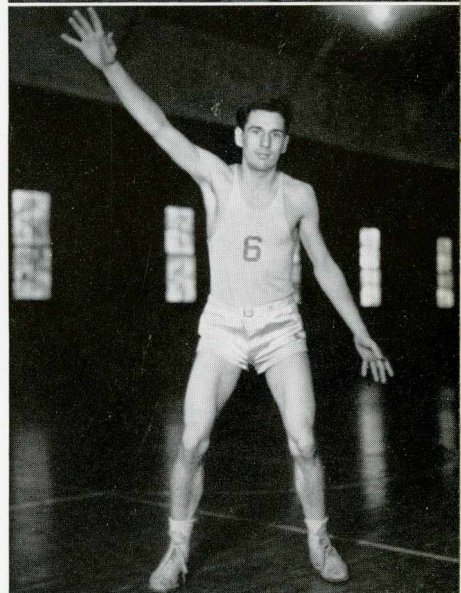
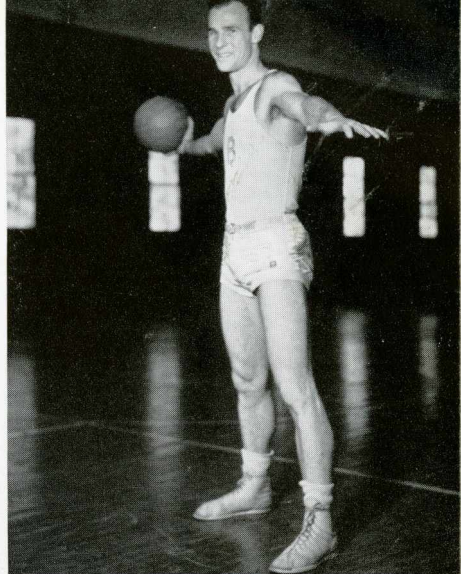
Briscoe's chief work this season was effective team work with Hine in breaking up the opposing offense, and in retrieving the ball from the back board. A very aggressive guard, Briscoe exemplified the fighting spirit of the Hanoverian Panthers. In every mix-up over possession of the ball, Briscoe's legs were prominently discernible, usually near the bottom of the pile-up. His persistent and vigorous efforts inspired his teammates many times, when the opposition was particularly "tough".

Bob, in a recent personal conversation, intimated that he is agitating for the extension of the personal foul limitation from four to six in order that he will get to play longer next year.

DORRANCE KOHLMEIER

The only freshman to make a letter this year, Kohlmeier exhibited plenty of strength on the hardwood. Alternating for either Hine or Briscoe, he filled their positions with skill and efficiency. "The Krauthead" plays very well under the basket, retaining his place on the varsity by virtue of this defensive ability "par excellence". Also blessed with a good "basket eye", his contribution in the form of field goals was considerable.

With three long years ahead of him, "Big Dorrance" promises to develop into a ball player whose feats will surprise even the home folks back in Milan, Indiana.



B A S K E T B A L L

B A S E B A L L

Eight returning lettermen formed the nucleus for the 1939 Panther baseball squad. Kovacic and Taylor were the second-year men playing in the infield; Lowell spent his second year behind the plate; Grigas and Lawrence were the returning pitchers; and Perkins, Young, and McManaman patrolled the outfield for the Hilltoppers. Fine freshmen material in Price, Chappie, and Newcombe was of vast aid to the team. Tom Young, a four year man, was in charge of the team for the season.

1939 SCHEDULE

March	27—University of Louisville	There
	30—Franklin	There
April	21—Ball State	There
	22—Taylor	There
	29—Franklin	Here
May	2—Indiana Central	There
	5—Taylor	Here
	8—University of Louisville	Here
	10—Central Normal	There
	12—Indiana Central	Here
	15—Ball State	Here
	24—Central Normal	Here

Last year behind the steady pitching of Jack Alvis, the Theta Nus took the intramural baseball trophy without losing a game. The Fijis and Betas finished second and third respectively in this tourney.

Charles Kemf pitched a no-hit, no-run, game against the Betas as the Phi Gams and Betas were fighting for second place in a late-season contest.

Dendinger, Alvis, Neil, Taylor, McClure, Isley, Hine, Miller, Barnes, and Morrow were the players used most by the Theta Nus in their successful bid for supremacy in this division of intramural athletics.



T R A C K

Through the generosity of Mr. Iuan Morgan of Austin, Indiana, Hanover has the start for one of the best tracks in the state. With a 220-yard straightaway, the new quarter-mile oval is one of which the college can justly be proud. The track will probably not be at its best for a couple of years as time and settling are important in making a good track. It is probable that some of the lesser state meets may be lured to Hanover in the very near future, and that Panther track teams will show marked improvement because of increased interest in this spring sport. Mr. Morgan donated \$3,000 toward the making of this new addition to the Panther athletic equipment.

Some of this year's returning lettermen are Pruett, Dendinger, Young, Shugert, D. Miller, Hine, Briscoe, and McKeand. Meets are scheduled tentatively with the University of Louisville, Indiana Central, and the University of Cincinnati. The Little State meet which will be held this year at Ball State May 20, will be a recipient of this year's best track talent from Hanover as will the Big State meet which will be held at Notre Dame on May 27.

Last spring the Betas outclassed the field in the annual intramural track meet. The Phi Gams garnered second place and the Phi Delts beat out the Theta Nus for third place honors.

The Betas won first places in the following events: shot put, half-mile, mile relay, 100-yard dash, pole vault, 220-yard dash, low hurdles; and they placed well in other events. The Fijis picked up most of their points in the field events.



Intramural Winners

One of the elemental factors in intramural relations is the sports program carried on throughout the year with the coveted intramural trophy as the goal. The intramural cup has been in circulation for six years and has taken its turn sitting on the mantels of the various houses. For the year 1937-38 the team representing Phi Gamma Delta succeeded in amassing sufficient points to win the cup. The Betas ran a very close second, and the Phi Delts finished in third position. The Fijis won first place by placing in the various sports as follows: first in volleyball and ping-pong; second in basketball, baseball, track, and tennis.

Last year's final standing in intramural points for the three highest contenders was as follows:

Phi Gamma Delta.....	112
Beta Theta Pi.....	106
Phi Delta Theta.....	84



Ping - Pong

Gibbs and Bell won the intramural ping-pong for the Phi Gams last spring with but one defeat. Gibbs dropped one match to Ed Bell, Beta, but since the two-man averages of each organization determine the winner of this event, the Fijis won first place. The Betas lost only three matches as Ed Bell and Spandau triumphed over everybody but the Phi Gams.

Cross-Country

The Betas captured the ten points given for the third annual cross-country run which was staged between the halves of the Hanover-Franklin football game. The Phi Delts and Phi Gams were second and third respectively.

The first ten men in the order in which they finished were as follows: Fogelberg, Sigma Chi; White, Beta; Modesitt, Theta Nu; Taflinger, Theta Nu; Warriner, Phi Delt; Kovacic, Phi Gam; Tull, Phi Gam; Aiken, Phi Delt; Morgan, Beta; and Richmond, Theta Nu.

Volley Ball

Volley ball, a major sport in the intramural program, was won by the Phi Gams without losing a single game. The Betas and Phi Delts battled it out for second and third honors. The Fijis who played most on the winning team were as follows: Pruett, McKeand, Kovacic, Miller, Drake, and Tull.

I N T R A M U R A L



Inter - Fraternity Basketball

A strong Theta Kappa Nu basketball team emerged victors in the annual Inter-fraternity Basketball Tournament this year, conquerors over three squads which they were called to face.

In the opening tourney game, the Theta Nus whipped the favored Phi Delta Theta team. Then they went on to take a very close tilt from Beta Theta Pi by one point. Meanwhile Phi Gamma Delta had also gained the final round by beating the Sigma Chi quintet.

In the finals the Theta Nu group got off to an early lead and were never headed by the Fijis, finally winning 23-20. The game was close throughout.

Members of the victorious squad were Dendinger, Kohlmeier, Neill, Taylor, Addison, Rork, and D. Miller.

Horseshoes

The Theta Nus won first place in this event with the Betas finishing a very close second. The rest of the teams were in a multiple tie for third place points.

McClure, Taylor, and Hine alternated for the first place Theta Nus.

Tennis

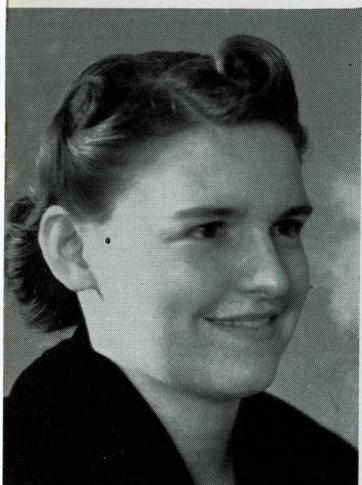
Richard Lutz and Frank Aull took first place for the Betas in the intramural tennis tourney held last spring. The Fijis, represented by McKeand and Bell were second, bowing only to the Betas in the final doubles match in which the Betas triumphed by the scores of 6-3, 2-6, 7-5.

Basketball

In the most hectic basketball tourney in many years, the Theta Nus emerged victorious in the play-off for the cup after tying for first with the Betas. In a tie for third and fourth place honors were the Phi Gams and Phi Delts.

The Betas finished the first round without a setback, but faltered in the second round as they lost in three of their last four encounters. The tourney was marked throughout with close games.

Players seeing the most action for the winning Theta Nu quintet were Dendinger, Neil, Alvis, Rork, and Addison. Ed Bell took high individual scoring honors in intramural competition, dropping in 102 points for the Betas.



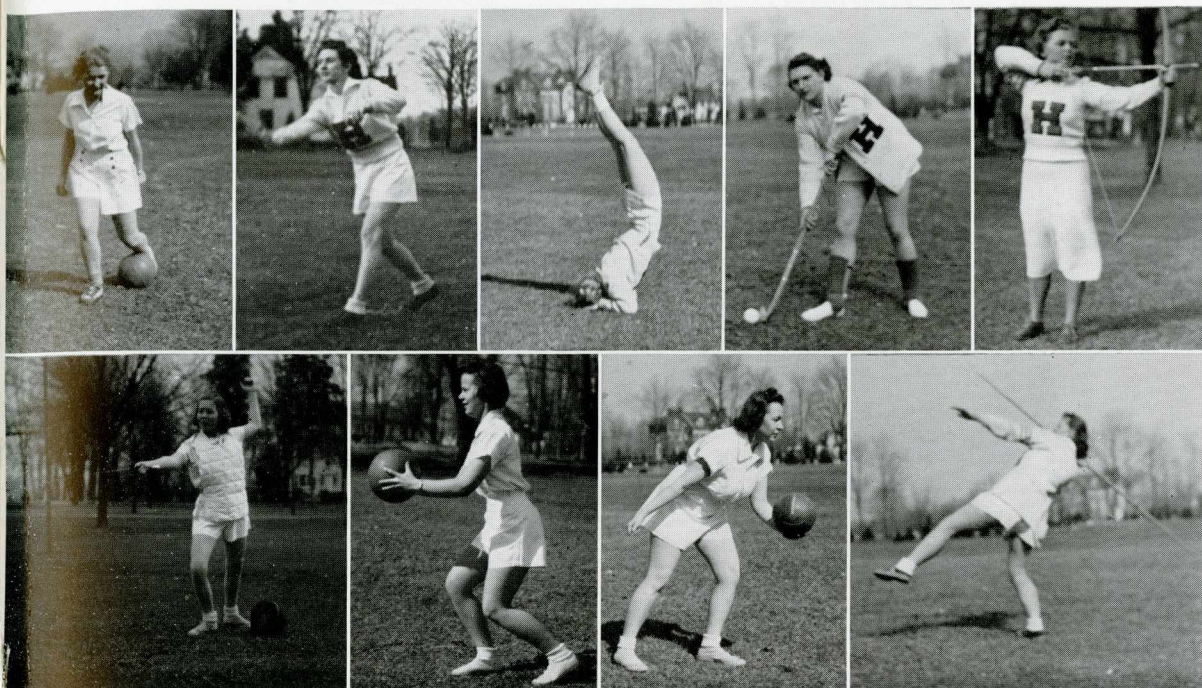
HIGHEST AWARD

This year the winner of the best all around senior woman trophy is Carolyn De Jean. This plaque is presented by the alumnae of the W. A. A. to the senior woman voted by the faculty to rank highest in scholarship, sportsmanship, athletic ability, campus activities, and general campus esteem. In order to be eligible for the trophy a student must have maintained a scholarship average of 1.75 and must have won her W. A. A. sweater.

For two years Carolyn has been outstanding as editor of the "Sportsgirl", and in recognition for her work on this publication she was made an honorary member of Kappa Pi Beta, national journalistic fraternity. She is also a member of Alpha Phi Gamma and Gamma Sigma Pi and of the Alpha Delta Pi sorority.

During her athletic career, Carolyn has had thirteen varsity ribbons and three substitute awards in eight different sports—speedball, soccer, hockey, basketball, volleyball, tap dancing, baseball, and track. In addition to her sweater, she has earned a W. A. A. plaque.

Carolyn is an all-around good sport and a good student. Ranking third in her class, she graduates *Cum Laude*.



W. A. A. Seniors

JANE CUTTER

BOBBIE JONES

MARGARET BRAND

CAROLYN DE JEAN

LOIS PURDY

BETTY BLACK

ARLEEN BOLES

CLAIRE DAWSON

MARTY BUNCH

Here she traps a soccer ball, but W. A. A. usually expects Janie to trap words for a "Sportsgirl" column.

Though she's standing on her head and undeniably a blonde, our Blondie is no dizzy blonde but a good sport and keen player.

A "Purdy" aim—and her aims hit their mark. Though not majoring in phys. ed., Lois has added much to W. A. A. and has won her sweater.

She shoots with her eye on the goal and a smile in her eye—and we say, "Good luck, Boles."

Grand to have on your team and swell to play against, that's Bobby, noted for her laugh and winning her sweater and plaque unusually early.

All ready for the signal is Diji, the Dynamo; she caught her signals as "Sportsgirl" editor, too.

You see her fencing but never hedging—straight forward and peppy—that's why we go for Betty.

It looks like a real serve, but that's Claire's speciality whether she serves as an officer or in games—and she's done lots of both.

President of champions and a four-star champion herself is Marty. She attributes her many awards and honors to prunes—must be a kind we've never tried.

A T H L E T I C S



FIRST ROW: Ashton, Purdy, Brand, Nagel, Jones.

SECOND ROW: Dawson, Boles, Conarty, D. Woods, Clayton.

THIRD ROW: Bunch, N. Kessler, Mott, Watts, DeJean.

This year's varsities are composed of many old stand-bys. Of last year's soccer varsity, Jean Clayton, Carolyn DeJean, Arleen Boles, Bobbie Jones, Margaret Brand, Madge Ashton, Lois Purdy, Ruhmah Hannah, Martha Bunch, Jane Nagel, Claire Dawson, and Virginia Mott have all returned for more honors. Seven of these girls will graduate and give the underclassmen a chance next year.

The soccer trophy was taken by Alpha Delta Pi after winning the first game and tying the second game of the tournament. These games were more exciting than the hockey games because of the great expanses of mud in which the players could slide. The Alpha Deltas now hold the current soccer trophy and the Phi Mus have two permanent ones.

SOCCER VARSITY

HOCKEY VARSITY

There are seven seniors on the hockey varsity: Carolyn DeJean, Martha Bunch, Margaret Brand, Bobbie Jones, Lois Purdy, and Betty Black. Only four others have made hockey varsity for the last two years—Virginia Angne, Laura Huber, Madge Ashton, and Jean Clayton. Next year's varsities will boast many new faces.

By defeating the Phi Mus in one hockey game and tying the other game, the Alpha Delts won the intramural hockey tournament. The hockey trophy will remain in their permanent possession since this is the third successive year they have won it. Of the two hockey trophies now held permanently, the Alpha Delts have one and the Independent Women the other.

FIRST ROW: Purdy, Boles, Woods, Ashton, Brand, Wood.

SECOND ROW: Long, Hill, Bunch, Angne, Mott, Clayton, Mathews, Jones, DeJean.



TOP ROW: Brand, Jones, DeJean, Mott.

SECOND ROW: Dawson, Bunch, Huber, Husbauer.



The governing body of the Women's Athletic Association is its board. It meets weekly to discuss and further its functions. Miss Mitchell and Miss Gardner are the efficient supervisors.

The overnight hike to Camp Louis Ernst, the W. A. A. Carnival plus the monthly publication of the "Sportsgirl" are among the chief activities directed by this board.

This board also is active and cooperates with other campus functions. Every freshman can recall her first trip to Camp Louis Ernst; we all remember the tea sponsored by W. A. A. during the winter and the dormitory parties in the old "music room".

W . A . A . B O A R D

TOP ROW: Cutter, Mitchell, Husbauer, Mott,
Mulford, Newcomer, Lyle.

SECOND ROW: Angne, Hill, Wood, Kessler, Clay-
ton, Moore, Millis, DeJean, Bunch.

THIRD ROW: Westover, Wallace, Williams, Schan,
Watts, Treasure.

FOURTH ROW: Ellsworth, Demaree, Dawson,
Kessler, Miller, Brand, Bacon, Shearin, Gable,
Gompf, McKay, Purdy.

FIFTH ROW: Woods, Jones, Ashton, Boles, Long,
Shacklette, Shifman, Gable.



Everyone remembers W. A. A. pledges on an early December day. That evening is initiation and the announcement of hockey and soccer varsities plus a Christmas party at the Parkers'.

During the winter season basketball and volleyball take the lead with Danish gymnastics, stunts and tumbling, tap, and correctives in their places. It is at the annual basketball banquet that these varsities are announced.

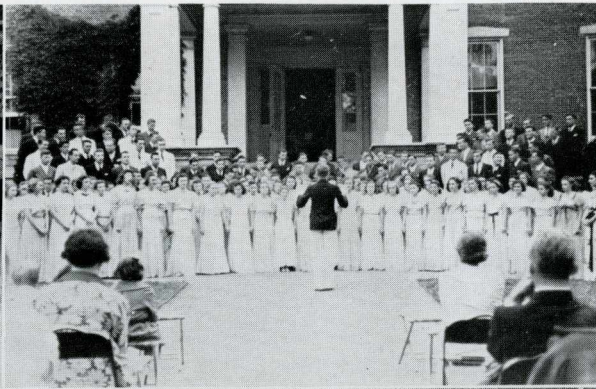
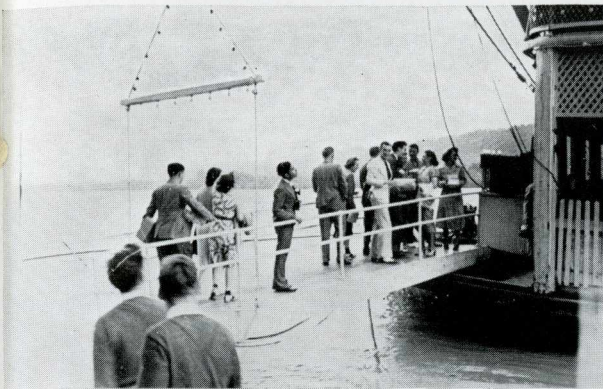
The year is always brought to a grand climax at Camp Louis Ernst for the overnight hike. Here baseball, track, and archery awards are made. We eat and eat and have all kinds of fun.

W

A

A

Activities



BOAT RIDE . . . SING
ALL-COLLEGE PICNIC . . . MAY DAY



ADA E. MARTIN, *Editor*

RICHARD RUDELL, *Business Manager*

Each year the new editor and business manager for the year book are selected by the "Revonah" Board of Control, composed of three faculty members and four representatives of next year's junior class. Ada E. Martin of La Porte, Indiana, and a member of Phi Mu sorority was picked as editor while Richard Ruddell of Kokomo, Indiana, and a member of Beta Theta Pi fraternity was chosen as business manager.

First as only a conception in the mind of the editor—then into reality as dummies and proofs—the 1939 Revonah takes its form. Anxiously the staff watches the book go to press. At last it comes to you in completed form. It is submitted with the hope that it encompasses all you would like to remember of this year at Hanover College.

R E V O N A H

S T A F F

EDITORIAL STAFF

Editor.....Ada E. Martin
 Assistant Editor.....Edmond Tilley
 Art.....Charles Barnett
 Polly June Hall
 Alex Felix
 John Nix
 Sports.....George Bell
 Ruth Husbauer
 Dan Miller
 Photography.....Henry Baumann
 Activities.....Mary Louise Francisco

BUSINESS STAFF

Business Manager.....Richard Ruddell
 Advertising.....Edwin Bell
 Frank Aull

STANDING: Baumann, Barnett, Felix, Ruddell.

SEATED: Bell, Hall, Francisco, A. Martin, Husbauer, Nix, Tilley.



STUDENT COUNCIL

The Student Council is selected for each ensuing year on the merit basis by a faculty committee appointed by the council in power. The body is composed of ten members who elect their own officers. This year Miriam Moreland is president and Lois Purdy is secretary-treasurer.

The council manages the distribution of the student tax, has charge of student conduct in general, and keeps close contact between the student body and the administration, expressing student opinion on matters that affect the welfare of the entire college. From time to time the council sponsors all-college dances and other forms of recreational activity.



TOP ROW: Laue, Baumann, Newton, D. Miller, Ruddell, R. Miller.

SECOND ROW: Allison, Purdy, Moreland, McKamey.

SCIENCE CLUB

"The student of natural science scrutinizes, touches, weighs, measures, analyzes, dissects, and watches things. By these exercises his powers of observation and judgment are trained, and he acquires the precious habit of observing the appearances, transformations and processes of nature." With this as a background, the Science Club holds meetings twice a month to discuss subjects of scientific interest. These discussions are conducted under the leadership of the faculty members or outside speakers.

The club consists of those faculty members and students primarily interested in science. However, only those students that have completed at least five hours of "B" work in some laboratory science are eligible for membership.



TOP ROW: Neil, Phillips, Baker, Boyer, Robbins.
SECOND ROW: Laue, Wills, Brocklehurst, Rouen, McNeil, Hyatt, Wickwire, Lowell, Deremiah, Alton, Wilcox, J. Cox.
THIRD ROW: A. Martin, Hall, Ewing, L. Martin, Thomas, Nagel, Rosebrock, Kovacic, Dr. Martin, Weatherbee, Guthrie, Tilley.



TOP ROW: Griffith, Ronald, Neff, Davis, Chap-
pie, Brocklehurst.

SECOND ROW: Ebersole, Rosebrock, Ward, Kat-
terhenry, Kovacic, Deremiah, Wills, Wendt.

THIRD ROW: Purdy, Husbauer, Goes, McKamey,
Lawrence, Reinschreiber, Krauspe.

FOURTH ROW: A. Martin, Westover, Shifman, J.
Moore, Cutter, Nagel.

The German Club this year continued to do its weighty bit in improving the social and intellectual nature of student activity. Shortly after the beginning of the school term, a widely known and liked German picture, *Emil und die Detektiv*, was presented in chapel. With the help of the French and Classical Clubs the picture was a complete success. Parties and roasts were held at different periods of the year at which German songs and games played interesting parts. The student's routine life was thus momentarily interrupted and enlivened with an invigorating change.

An important trend this year was the cooperation with the French and Latin Clubs toward a more unified social plan to further the student's interests.

GERMAN CLUB



TOP ROW: Hodgens, Lowell, Craig, Swift, Lyle, Elliot, Wood, Purdy, F. Carmichael, Lowe, Shirley, French, Scott.

SECOND ROW: Schacklette, Cutter, Logan, Allee, Allison, Thomas, Turner, Katterhenry, McDaniel, Noland, Bacon.

THIRD ROW: Long, Hanna, Pluess, Anderson, Brown, May, Woods, Boone, Francisco.

The French Club, with a membership of approximately forty, has existed on the Hanover campus for many years. It is now under the supervision of Miss Anderson. Requisites for membership are two or more years of French with an average grade of "B". The purpose of the club is to further interest in French culture and customs, as well as to promote the study and usage of the French language. Meetings are held monthly.

Various social activities and programs are held throughout the year. There is an annual presentation of a French picture. At Christmas time the group sings French carols for the faculty. The club also holds an annual picnic in the spring.

F R E N C H C L U B

C H O I R

The College Choir is the most consistently active student organization on the campus. Admittance to the group is gained through tryout not only for tone quality but also the ability to read music easily.

This is necessary because of the very large repertoire which the choir possesses. The organization consists of thirty mixed voices, director, and student organist. It rehearses twice a week and sings regularly at the Hanover Presbyterian Church for the morning service. In addition, the choir makes trips to various churches in the southern part of the state to present programs of sacred music. The choir looks forward to next year when facilities in the music program of the college will have been enlarged.



TOP ROW: Barnett, Taggart, Laughlin, Malone, Moorhead, Cowan, Griffith.

SECOND ROW: Poland, Powell, Wolf, Ebersole, Moreland, McConnell.

THIRD ROW: Ogden, Jones, Elliott, Henderson, Allison, Carson, Bunch.

TOP ROW: Pender, Bowerman, Jones, Wolf, Laughlin, Rankin, Earhart, Bergdahl, Schnaiter, Tageson, Young, Collier, Riley, Chappie, Hartley.

SECOND ROW: J. Moore, Bell, Moorhead, Barnett, Shirley, Cowan, Clayton, N. Kessler, Williams, Miller, Robinson, McConnell, Griffith, Felix.

THIRD ROW: Schacklette, McKesson, M. Shelby, Turner, Ogden, Ebersole, Spacke, L. Martin, McKamey, Allison, Carson, Francisco, Bunch.

FOURTH ROW: Porter, Elliot, Powell, Watts, Allee, Caldwell, Jones, Woods, W. Gabel, P. Pluess, Noland, Miller, Chamberlain.



A new musical organization on the campus has made a deep impression in the lives of the students. This organization is the combined Men's and Women's Glee Clubs. As yet, no name has been ascribed, but that does not hinder its activity. It consists of seventy mixed voices and entrance is gained through tryout. These students have been heard in chapel at various occasions and have also presented programs in the vicinity of the college. Most of their music is sung acappella and a large percentage of the music is arranged for eight parts. This involves many intricate harmonies which present a tone color which can only be evolved from a group such as this. This organization will be a permanent part of the musical program in the future.

G L E E C L U B

TOP ROW: Laue, Hodgens, Baumann, D. Miller.
SECOND ROW: Kyle, Barnes, R. Miller, Henry.



The Sphinx Club is an honorary activities organization for juniors and seniors. It is not local in scope, but has chapters on several campuses throughout the Middle West.

In various ways the club attempts to foster school spirit and to provide fellowship for its members. Among several activities, the club undertakes the decorating of the football goal posts during the gridiron season and offers extra services of hospitality during Homecoming week-end.

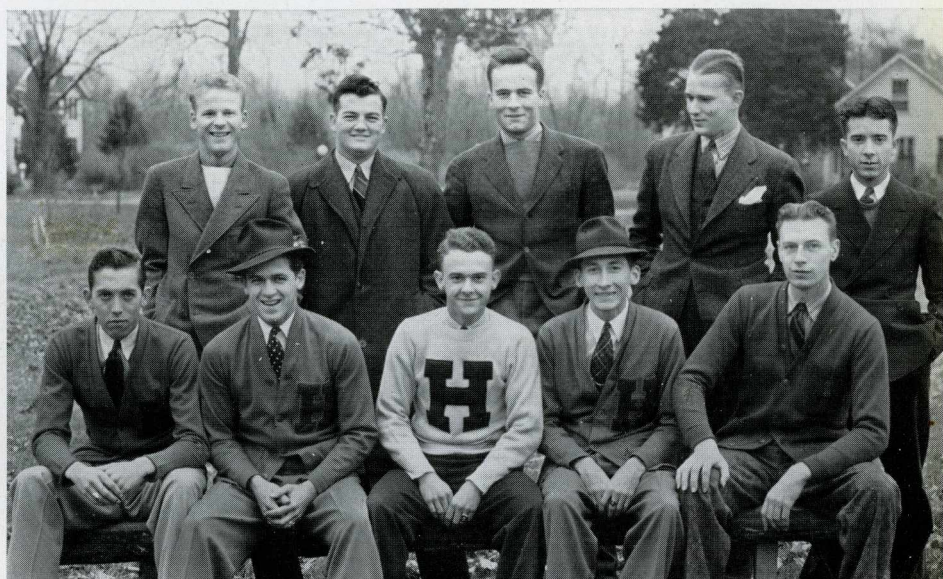
The Sphinx Club works as a body for school unity, with Dr. A. R. Hogue as faculty sponsor.

S P H I N X C L U B

TOP ROW: Bjorn, Newton, Palmer, Chappell,
Hartley.

SECOND ROW: Griffin, Barnes, Kyle, McMan-
man, Grigas.

NOT PICTURED: McNeal.



The Bat Club was founded on the Hanover campus during the 1937-38 school year. The club is honorary and limited in membership. Its principal purpose is to foster a stronger feeling of friendship among its members. The organization also lends its support to many school activities.

The club initiates new members each semester and its "well house" pledgings are becoming traditional. This year the club presented a victory bell to Hanover and Franklin as a token of annual football supremacy between these two schools.

B A T C L U B



TOP ROW: A. M. Pender, Wills, Brocklehurst, Shirley, Laue.

SECOND ROW: Ewing, A. Martin, DeJean, Purdy, Miller, M. Shelby.

Founded in 1926, this honorary society was designed to give recognition to those students who show outstanding scholastic ability and to promote high scholarship. Membership requires a point average of 2.5 in two out of three consecutive semesters.

The senior having the highest average this year, Lois Purdy, automatically becomes president. The faculty advisor for the group is Dr. Arthur Hogue.

GAMMA SIGMA PI

ALPHA PHI GAMMA

Rho, local chapter of Alpha Phi Gamma, national honorary journalistic fraternity, was installed at Hanover College in 1927. The qualification for membership is consistently good work on one of the campus publications, the "Triangle", the Rev-onah", or the "Sportsgirl".

Jane Cutter, Floyd Bowerman, Richard Ruddell, Russell Ferrell, George Bell, Vaughn Drake, and Dr. William Moore were new members this year. Miss Mary Lou Fitton is faculty member and sponsor. Miss Fitton and Robert Elmer Miller, editor of the "Triangle", attended the National Press Association convention at Cincinnati in October.



TOP ROW: Drake, Bell, Ferrell, Fitton, Henry, Moore, Breeding, Ruddell, R. Miller.

SECOND ROW: Robinson, DeJean, Bunch, Hanna, Boles, Cutter.

Y W C A C A B I N E T

The Young Women's Christian Association on the Hanover campus is the women student's organization of religion, having as outlets service, missionary education, devotional meetings in the form of Sunday vespers, and general religious education. Social and inspirational features frequently take the form of breakfast or supper for the entire membership for which special speakers are brought to the campus. It is affiliated with the National Board of the Y. W. C. A. and the World's Student Christian Federation.

The officers for the coming year are elected by the members in the spring. This year's president is Jane Nagel.

TOP ROW: Ebersole, McKamey.

SECOND ROW: Clayton, Nagel, Allison, Katterhenry.



Y M C A C A B I N E T

The Young Men's Christian Association program on the campus is directed by a small representative group called the Cabinet. In cooperation with a faculty advisor this group serves as an executive council which is responsible for the work of the association.

In the past any man registered as a student of the college was considered a member of the organization. However, this year only those men who have announced their desire to affiliate in the work of the "Y" are considered active members. They work in fields of their own interest in commissions which are study-discussion groups forming the basis of the program.

The organization is taking a position of vitality and continuous Christian service on the campus. The old Y. M. C. A. building is open during free periods and recreational facilities have been provided. Next year the "Y" hopes to be of great service to the freshmen.

Nix, Gettinger, Laue, Baumann, Moorhead.



S T A F F

The Triangle, Hanover College's newspaper, appears weekly throughout the school year. Published by an editor and business manager who are selected by the faculty Publications Board of Control, the paper attempts truly to present student opinion on matters pertinent to the student body and the college. It is now in its thirty-first year of publication.

The majority of the copy for the Triangle is written by students who have taken one or more courses offered by the journalism department. Staff membership is based on merit and interest. Although most members of the staff are upperclassmen, a few promising freshmen in the beginning journalism class gain places on the Triangle after the first semester. Miss Mary Louise Fitton is faculty adviser.



TOP ROW: Drake, Ferrell, Fitton, Bell, Bowerman, R. Miller, Deremiah.

SECOND ROW: Ruddell, Nichols, Bunch, Robinson, Allison, Hodgins, Henry.

THIRD ROW: Boone, Craig, Conarty, L. Martin, Hanna, Cutter.

Robert E. Miller, Editor
Harry Henry, Business Manager



STAFF - - - 1938 - '39

Editor.....Robert E. Miller
Associate Editor.....Russell W. Ferrell
Business Managers.....Harry Henry, Charles White
Faculty Adviser.....Mary Louise Fitton
Sports Editor.....George E. Bell
Editorial Board.....Vaughn Drake
Dorothy Allison
Charles White
Columnists.....Richard Ruddell
Curtis Hodgins
Feature Editor.....Eleanor Craig
Art Editor.....Floyd Bowerman
Society Columnists.....Dorothy Allison
Anne Conarty
Willamae Shirey
Women's Sports.....Martha Bunch
Reporters:—
Alice Robinson, Donna Boone, Robert Wilson, Dorothy Nichols, Clifford Wilcox, Louise Martin, Charles Barnett, Jane Cutter, Ruth Hanna.
Circulation Manager.....Robert Deremiah

T R I A N G L E

LEFT TO RIGHT: Ruddell, Martinella, B. Moore, Gettinger, Rosebrock, Watters, Lowe, Tetrick, Riley.



"To be or not to be?" No, that's not the question which is most perplexing to the Hanover students on the debate squad. Rather it has to do with our economic theory. Should government cease spending and lending money (including credit) for the stimulation of business? This is what these forensic students pondered upon and finally reached no definite conclusion.

Our team met Butler, Anderson, DePauw, Rose Poly, Wabash, and Indiana Law School. The climax of the debating season was the tournament held at Manchester College. Professor Watters coached his young hopefuls in a seminar class, studying the question itself.

DEBATE SQUAD

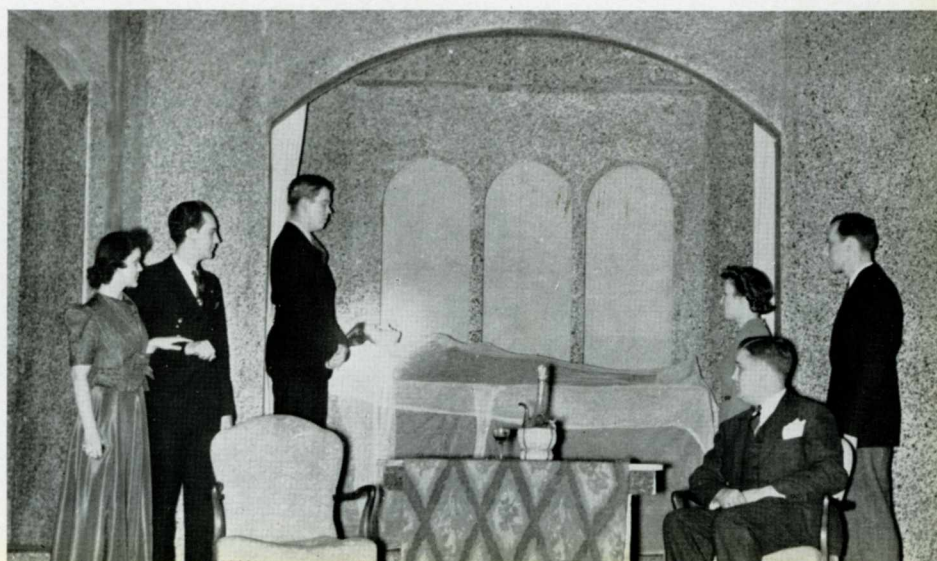
HANOVER PLAYERS

The "Players", under the direction of Prof. Don A. Watters, while serving as a recognition of Thespian talent are even more deserving of commendation for their productions given throughout the school year. Membership to this group is open to all students proving the required ability in the acting, staging or directing of student productions.

The "Players" gave, during the first semester, two three-act plays—"Hay Fever" and "Invitation to a Murder". The productions of the second semester were "Children of the Moon" and "Doctor in Spite of Himself".

The officers are: William Barnes, president; Dorothy Allison, vice-president; and George Palmer, business manager.

Martinella, Snyders, Burroughs, M. Shelby, Purkheiser, Ruddell.





TOP ROW: Westington, Ebersole,
Baumann, Drescher, Rankin,
Chamberlain, Hill.

SECOND ROW: Pender, M. Martin,
L. Martin, Dawson, Hanna,
Clayton.

After a number of years of inactivity, the Classical Club was reorganized on the Hanover Campus last year by Dr. Westington for the benefit of students of the Classical department. Monthly meetings were held at the sponsor's home, at which interesting programs, pleasant social hours and refreshments were enjoyed by the members.

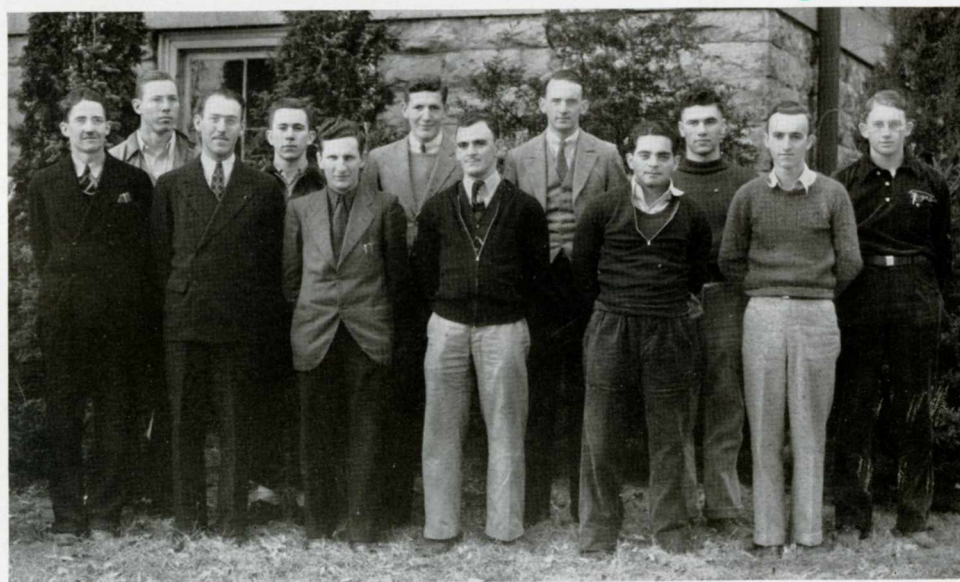
The Classical Club established a precedent for itself last year by presenting a program of Latin songs at a chapel period. It established another this year by singing Christmas carols in Latin at various points on the campus, ending with a Wassail party at the Westington home.

CLASSICAL CLUB

INDEPENDENT MEN

The present club—the Independent Men—was formed at the opening of college in the fall of 1937 for the purpose of creating a spirit of friendship among those male students who found it impossible to join a fraternity and who wished to cooperate in making it possible to enjoy more fully the social, recreational, and educational opportunities of the college.

Nine of the charter members returned to college this year, and six new members were elected and initiated into the club. The officers are: Carl Weatherbee, president; James Wakefield, vice-president; Robert Ong, secretary-treasurer; and Robert Wilson, athletic director.



TOP ROW: Ong, Olmstead, Ronald, Craig, Sheppard, Bryant.

SECOND ROW: Wilson, Bowerman, Weatherbee, Alton, Vargas, S. Boyer.

NOT PICTURED: Wakefield, Price.

The Independent Women's organization was formed about seven years ago for the purpose of uniting girls who were not affiliated with a sorority and providing means of personality expression for them.

The Independents take an active part in extracurricular activities. Winners of the freshman debate series five out of seven years, they earned permanent possession of the trophy this year by their third consecutive victory. Members of the debate team were Betsy Moore, Lenore Cupp, and Kathleen Bell, ably coached by Gwen Poulton and Sadie Medcalf. The intramural basket ball trophy was in the possession of the Independents during 1938.

The annual Thanksgiving tea, to which all members of the faculty and representatives of each campus organization are invited, is the outstanding social event of the year for the Independents. They enjoy a number of other parties during the year, including theatre parties and a week-end camping trip in the spring.

Independents aim at high scholarship, consistently maintaining a high grade point average. They also aim to promote friendship, not only among their own members, but among the whole student body.

Miss Evelyn Gardner, a charter member and first president of the organization, is faculty advisor.

I N D E P E N D E N T

TOP ROW (left to right)

JANE CUTTER

RUTH HANNA

GWENDOLYN POULTON

MILDRED BUNDY

SADIE MEDCALF

JEAN CLAYTON

BILLIE KYGER

CHARLOTTE PENDLETON

NORMA RYKER

SECOND ROW (left to right)

ELOISE MILLER

PAULINE LONG

ELIZABETH CHAMBERLAIN

GENEVA WILDMAN

HARRIET HARTWELL

BETTY NEWCOMER

RUTH WALLACE

VIVIAN MULFORD

LENORE CUPP

THIRD ROW (left to right)

JOSEPHINE LOGAN

LENA LYLE

KATHLEEN BELL

ROSEMARY DEMAREE

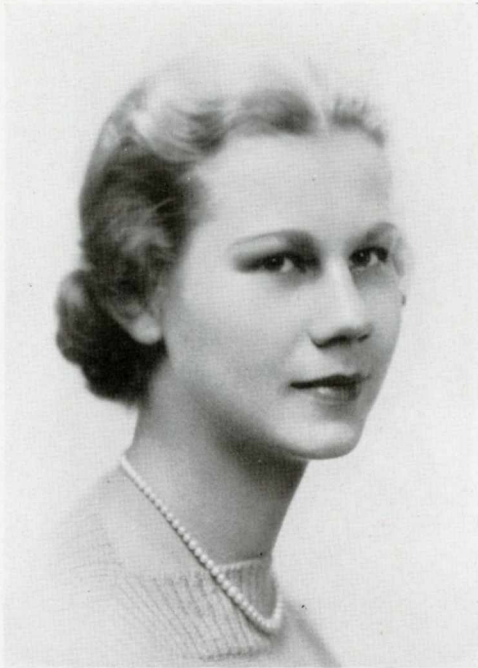
BETSY MOORE

JEAN BANTA

EMMA MAY HILL



W O M E N



BETTY MILLER

Miss Betty Miller, Alpha Delta Pi, received the largest popular vote for queen in her class. This vivacious freshman comes from Cincinnati, Ohio.

CORA JANE JOHNSTON

For her attractiveness and poise, Miss Cora Jane Johnston was elected queen of the sophomores. Cora Jane comes from Wyoming, Ohio, and is a member of the Alpha Delta Pi sorority.



R E V O N A H



JUDITH McTURNAN

Outstanding in beauty and personality, Miss Judith McTurnan, was picked as queen of the juniors. Judith is from Indianapolis and is a member of the Phi Mu sorority.

ALICE ROBINSON

Queen of queens is Alice Robinson of Hamburg, New York. Selected from the four class queens by a faculty committee, Alice received this title at the "Revonah" dance. Alice is a senior and a member of the Alpha Delta Pi sorority.



Q U E E N S

Greeks

IOTA OF BETA THETA PI



INDIANA EPSILON OF PHI DELTA THETA



TAU OF PHI GAMMA DELTA



INDIANA ALPHA OF THETA KAPPA NU



CHI OF SIGMA CHI



PHI OF ALPHA DELTA PI



RHO OF PHI MU



PAN-HELLENIC COUNCIL

The Hanover College Pan-Hellenic Association was organized in November 1921 with Alpha Delta Pi and Phi Mu as charter members. The aim of the Hanover organization has been to create a good fellowship between the two groups in sponsoring the Greek cause. In order for a local chapter or a sorority to belong to Pan-Hellenic, the national organization must be a member of the National Pan-Hellenic Association established formally in 1911.

The local Pan-Hellenic has stressed the cooperation of the two sororities for general benefit. During the year one or two social functions are sponsored by the organization. A council made up of three members of each sorority is the governing body of the association. This year Miriam Moreland, Phi Mu, is president, and Dorothy Allison, Alpha Delta Pi, is secretary-treasurer.



Aspinall, Allison, Angne, Conarty, Moreland,
McTurnan.



TOP ROW (left to right)

JUDD, ALVIS, McMANAMAN, SHUGERT,
TILLEY.

BOTTOM ROW (left to right)

KYLE, DRAKE, HENRY, D. MILLER,
R. MILLER.

The Interfraternity Council is an organization composed of three members of each fraternity at Hanover. These three members are taken from the Sophomore, Junior, and Senior classes, one from each class.

The duties of this organization lie in several planes, namely, to arbitrate interfraternity differences, to aid in student government, to cooperate with the authorities and to further the cause of fraternities by means of constructive discussion and social affairs. It is the custom of the Council to sponsor two dances, one in the fall and one in the spring.

The system of government within the Council follows a democratic course and has been most successful in gaining its ends.

INTERFRATERNITY COUNCIL

TOP ROW (left to right)

WILLIAM BARNES

CHARLES WHITE

HARRY HENRY

ROBERT CARR

SECOND ROW (left to right)

PHIL JOHNSTON

GEORGE PALMER

ROBERT GETTINGER

JAMES GRIFFIN

THIRD ROW (left to right)

RICHARD LUTZ

ROBERT BJORN

RICHARD RUDELL

FRANK AULL

FOURTH ROW (left to right)

JAMES GILL

RICHARD BAIRD

ROBERT WARD

EDWIN BELL

FIFTH ROW (left to right)

JOHN FRENCH

ROBERT BRISCOE

EDWARD WALSH

WENZEL AUGUSTIAN

SIXTH ROW (left to right)

WILLIAM VANCE

GLEN CARMICHAEL

RICHARD NEFF

EDWARD WERSHAY

SEVENTH ROW (left to right)

FRED CARMICHAEL

GERALD JOHNSTON

JOHN SCHNAITER

RALPH MORGAN

EIGHTH ROW (left to right)

CLARK MILLER

ROBERT NEWCOMBE

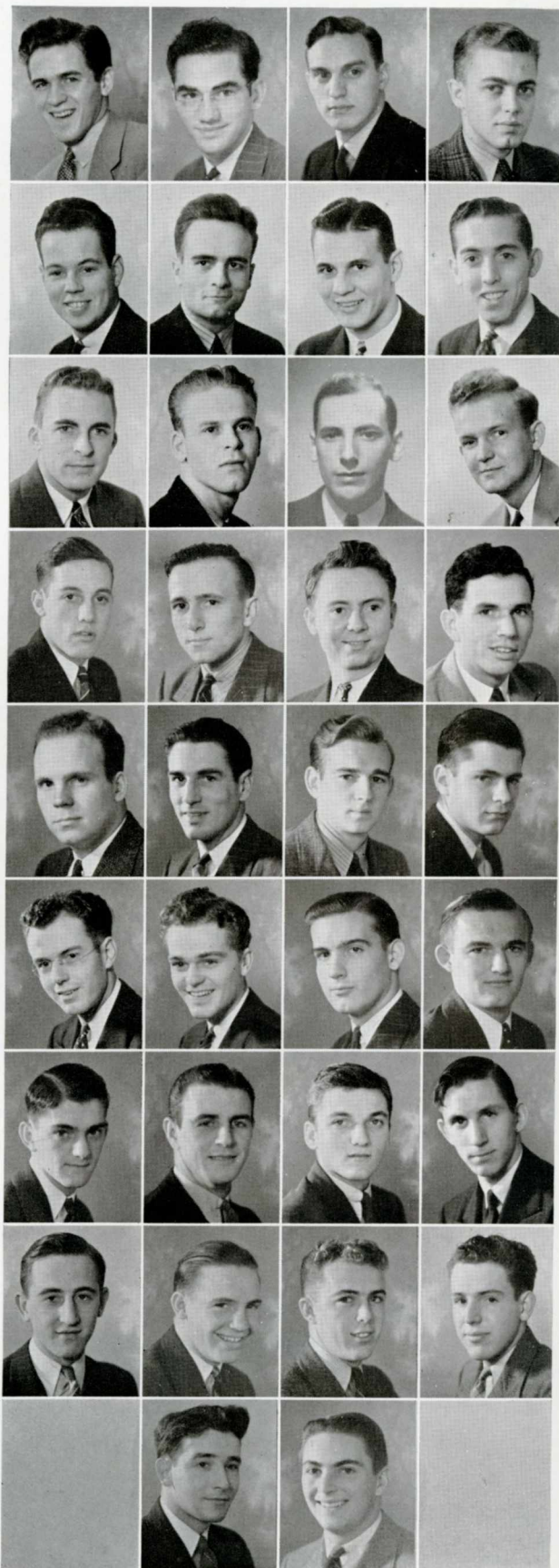
J. R. JOHNSON

DICK HUTCHINS

NINTH ROW (left to right)

WILLIAM FRENCH

CHARLES TAGESON



I O T A O F

B E T A T H E T A P I

Beta Theta Pi was organized at Miami University in 1839. Since then, it has grown to be an organization of eighty-nine chapters situated at the major colleges and universities of the United States and Canada. Five chapters are located at institutions of higher learning in Indiana and Iota chapter at Hanover was the second of these, being chartered in 1853.

The fraternity existed sub-rosa for two years when the death of one of its worthy members brought to light the existence of the first secret fraternity on the Hanover campus. The ensuing conflict between college authorities and Iota's members ended in establishing at Hanover, Greek letter organizations with the complete sanction of the college.

The history of Hanover is long and vivid and embodies in it the story of fraternities and their aid to the college.

INDIANA EPSILON



TOP ROW (left to right)

TOM YOUNG

BILL PERKINS

SECOND ROW (left to right)

ADOLPHE GRIGAS

JAMES PURKHISER

RICHARD NEWTON

ROBERT MOORHEAD

THIRD ROW (left to right)

FRED BLUM

RICHARD ACHBERGER

ROBERT ROUEN

LESTER ANDERS

FOURTH ROW (left to right)

CHARLES BARNETT

ALBERT HEYBERGER

ALEX FELIX

IRVIN ROBBINS

FIFTH ROW (left to right)

MARSHALL SHIRLEY

JEROLD HOOP

LLOYD HARTLEY

JERRY BROWN

SIXTH ROW (left to right)

ED WOLF

BEN LATTING

GEORGE SULLENGER

GEORGE TOLEN

SEVENTH ROW (left to right)

WARREN LOWE

ROBERT WOLF

DONALD BRUNNER

S. J. COPELAND

EIGHTH ROW (left to right)

EVERETT HILE

HAROLD GRIFFITH

JAMES MITCHELL

HARRISON FAITH

NINTH ROW (left to right)

JOHN COWAN

ROBERT AIKIN

BOB WARRINER

NOT PICTURED

KENNETH KYLE

WILLIAM YOUNG

ELMER GABBARD

Indiana Epsilon of Phi Delta Theta was the fifth chapter to be founded in Indiana and one of one hundred eight chapters in the United States and Canada. From the original six founders has grown an organization with a membership of over fifty thousand men.

The Hanover chapter was first granted a charter in April 6, 1861 and then was rechartered in 1868. At that time, meetings were held in the Odd Fellows Hall and continued there until 1870. Later, the chapter obtained the Oldfather home next to the Y. M. C. A. building for a permanent residence. The present chapter house was built in 1931.

The alumni chapter consists of four hundred members, the active chapter of eighteen members and the pledge class consists of eighteen members.

OF PHI DELTA THETA

TOP ROW (left to right)

LANIER McKEAND

ARTHUR TANCL

GILBERT LAUE

MIKE KOVACIC

SECOND ROW (left to right)

JAMES RANKIN

ROBERT MILLER

RUSSELL FERRELL

VAUGHN DRAKE

THIRD ROW (left to right)

EDMOND TILLEY

WARREN PRUETT

GEORGE BELL

HOWARD GILLILAND

FOURTH ROW (left to right)

FRED LOWELL

EVERETT LUNN

CHARLES KEMF

CLIFFORD WILCOX

FIFTH ROW (left to right)

EDWIN SHIMLER

DONALD SMITH

JAMES BAXTER

CLARENCE TULL

SIXTH ROW (left to right)

KESNER JORDAN

CORNELIUS GREEN

WILLIAM JONES

CHARLES EARHART

SEVENTH ROW (left to right)

BOB DEREMIAH

JOE COX

JOHN COX

JAMES BREEDING

EIGHTH ROW (left to right)

CHANDLER BERGDAHL

GEORGE WATKINS

MAURICE PENDER

JAMES KERVIN

NINTH ROW (left to right)

JAMES TAGGART

JOHN REED

HORACE FARLEY

ROBERT WRIGHT

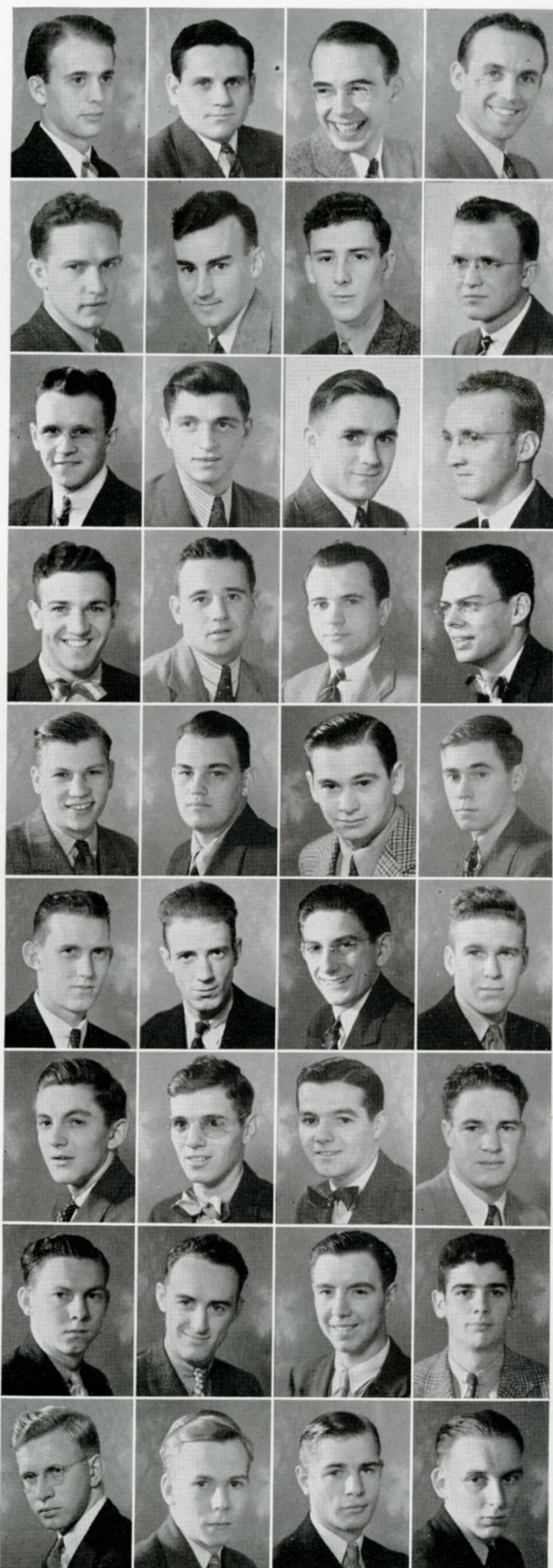
NOT PICTURED

EARL RILEY

ROBERT HENDERSON

PAUL TETRICK

DALE WRIGHT



T A U O F

PHI

GAMMA

DELTA

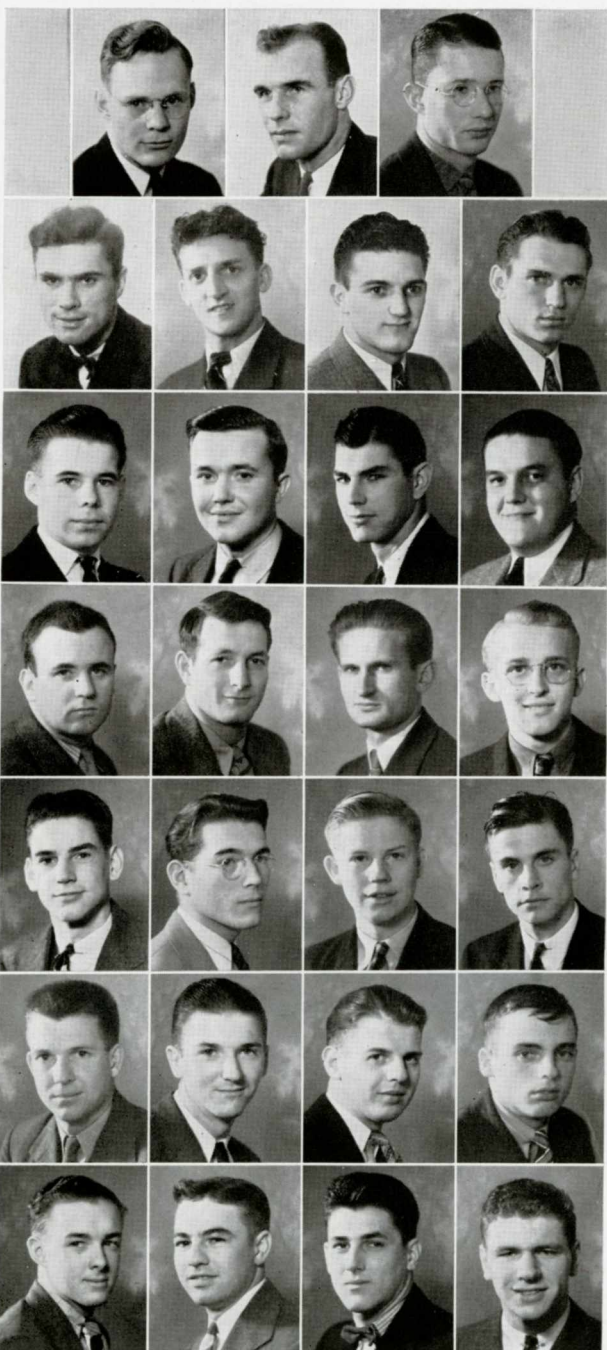
The fraternity of Phi Gamma Delta was founded in 1848 at Jefferson College in Cannonsburg, Pennsylvania. The original site is marked by a log cabin.

Tau chapter was founded at Hanover during the Civil War by four members of Lambda chapter of De Pauw University. These members, presumably on a pleasure trip to Cincinnati, stopped at Hanover on February 5, 1863. On the evening of that day, they initiated five men into the Hanover chapter.

Tau chapter was the second to be organized in Indiana and the eighth in the United States. At the present time, Phi Gamma Delta has seventy-three chapters.

Tau chapter observes, this year, its Diamond Jubilee, celebrating seventy-five years of continuous activity on the Hanover campus.

INDIANA ALPHA



TOP ROW (left to right)

DAN MILLER

DAVID HINE

BEN JUDD

SECOND ROW (left to right)

ELVIN HIGDON

WILLIAM NEILL

REX DENDINGER

JAMES PHILLIPS

THIRD ROW (left to right)

JOHN TAYLOR

HAROLD SNEDAKER

JAMES DAVIS

CHARLES DAVIS

FOURTH ROW (left to right)

JACK ALVIS

BILL ISLEY

JAMES BAKER

JAMES TAFLINGER

FIFTH ROW (left to right)

ROBERT GRINSTEAD

ROBERT BRAZELTON

LAWRENCE AVERITT

CARL GRAY

SIXTH ROW (left to right)

ELMO RICHMOND

DELLAS ROSS

CARL CHAPPIE

KEITH ADDISON

SEVENTH ROW (left to right)

WALTER MODESITT

BERTHEL CRUM

DORANCE KOHLMEIER

CHARLES NICHOLS

NOT PICTURED

GORDON STEARNS

HORATIO RORK

HARRY SILLMAN

Theta Kappa Nu fraternity was organized on June 9, 1924 in Springfield, Missouri, through the union of eleven well established locals. The fraternity received special recognition from the National Interfraternity Conference when the fifteen-year requirement for junior membership before admittance as a senior member was waived to allow Theta Kappa Nu senior standing within three years. The "merited recognition" was due to the progressive policies of the organization, its rapid growth, and its thorough fulfillment of its fraternity responsibilities.

The open motto of the Fraternity, "*Every Man a Man*," embodies the spirit of Theta Kappa Nu. It was organized to give fraternity recognition and opportunity to worthy college men wherever they might pursue their work. The forty active chapters are located in small, large, private, and state colleges and universities from coast to coast and from Florida to Michigan.

OF THETA KAPPA NU

TOP ROW (left to right)

JAMES McMANAMAN

DON CARVIN

ROBERT McNEAL

HENRY BAUMANN

SECOND ROW (left to right)

MAX WILLS

ROBERT BROCKLEHURST

WARNER SHUGERT

ALLEN JACKSON

THIRD ROW (left to right)

JOHN NIX

JOHN MEYER

JACK WINKLER

DAN MALONE

FOURTH ROW (left to right)

GORDON REINSCHREIBER

GEORGE WENDT

JAMES SHANNON

ROBERT BURROUGHS

FIFTH ROW (left to right)

ROBERT PEASLEE

WILLIAM EYLAR

LEMUEL SMITH

JOHN POGUE

SIXTH ROW (left to right)

HARRY KRAUSPE

FRANCIS MALONE

WEYMOUTH FOGELBERG

DAILY HILL

SEVENTH ROW (left to right)

CHARLES SNYDERS

GEORGE KALB

STANLEY PALM

DICK LA PADO

NOT PICTURED

CURTIS HODGENS

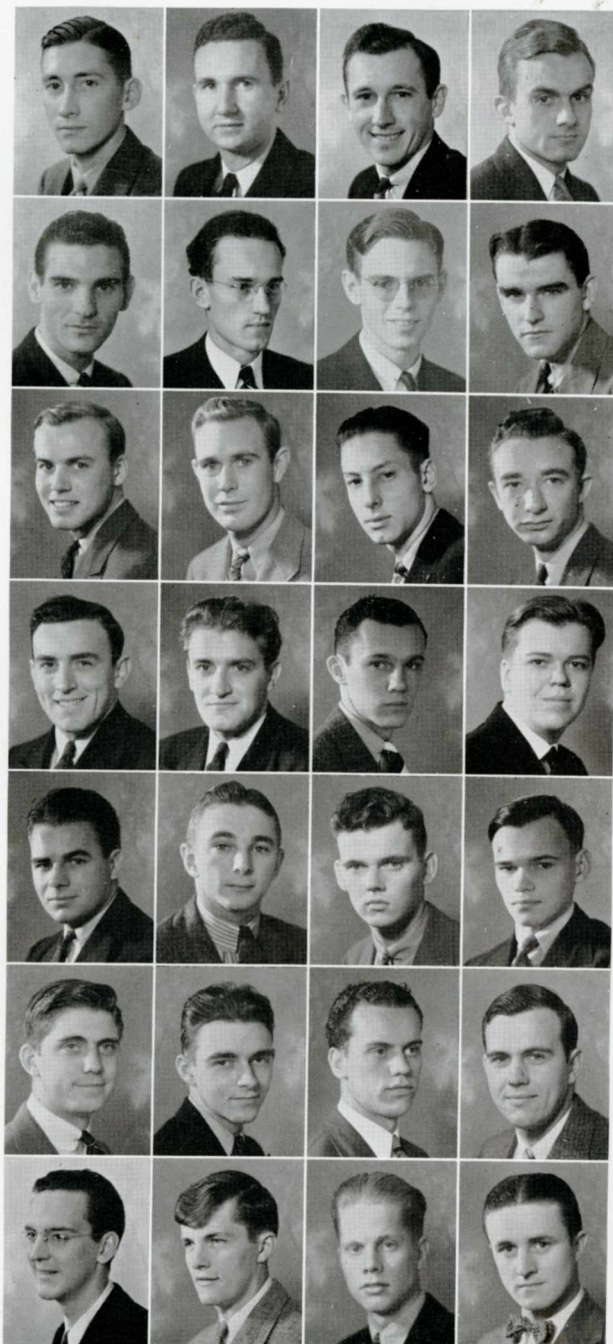
JOHN GRISWOLD

ROBERT NELSON

CHARLES SHAW

DAVID GREIST

MORGAN DRESCHER



S I G M A C H I

Chi Chapter of Sigma Chi was founded at Hanover on May 30, 1871. The founding of this chapter came as a complete surprise to all on the Hanover campus since the whole procedure was done in secrecy. The original six met under Crowe Falls where they made the plans for the official chartering of the chapter.

In 1917 the chapter became inactive, but in 1936 it was reinstalled with great pomp and ceremony.

Chi Chapter is the twenty-third chapter of Sigma Chi which now boasts of ninety-eight active chapters in colleges and universities in the United States and Canada.

Walter Fischer, a former Secretary of the Interior, is an outstanding alumnus of Chi Chapter.

TOP ROW (left to right)

DOROTHY ALLISON

FLORENCE ASPINALL

ALYCE MCKESSON

JEANETTE TURNER

MARGARET FLORA

SECOND ROW (left to right)

DOROTHY PORTER

ALICE ROBINSON

MARTHA BUNCH

LOIS PURDY

ROBERTA JONES

THIRD ROW (left to right)

GERALDINE EWING

CAROLYN DE JEAN

JANE NAGEL

VIRGINIA NOLAND

DOROTHY NICHOLS

FOURTH ROW (left to right)

DOROTHEA MATTHEWS

ELLEN KATTERHENRY

ELISE ERNI

DOROTHY WOODS

MARY ANN THOMAS

FIFTH ROW (left to right)

CAROL MAY

LOUISE MARTIN

WILLAMAE SHIREY

VIRGINIA ANGNE

JOYCE CALDWELL



Alpha Delta Pi is the oldest secret sorority for women founded on fraternity lines. It was founded on May 15, 1851 at Wesleyan Female College, Macon, Georgia, by sixteen girls and was known as the Adelphean Society. In 1904, it joined National Pan-Hell and became a Greek letter organization, Alpha Delta Phi.

P H I O F

ALPHA DELTA PI

The name was changed in 1913 to Alpha Delta Pi to avoid confusion between the sorority and the fraternity Alpha Delta Phi. In June 2, 1913, Alpha Delta Pi made its first appearance at Hanover when the local sorority Pi Alpha Tau became Phi chapter. Fourteen years later, the present chapter house was built.



TOP ROW (left to right)

RUTH HUSBAUER
 CORA JANE JOHNSTON
 BETTY MILLER
 DOROTHY McDANIEL
 MADGE McCONNELL

SECOND ROW (left to right)

NORMA KESSLER
 JEAN MOORE
 MARY ELLEN ELLSWORTH
 VIRGINIA AVEGNO
 FERN PIC

THIRD ROW (left to right)

ANNA McKAY
 WILMA GABEL
 DOROTHY SHIFMAN
 ANNA MARJORIE KESSLER
 ANN CUMMING

FOURTH ROW (left to right)

JEAN BACON
 MARTHA SHACKLETTE
 MARJORIE WESTOVER
 BETTY GABEL
 DOROTHEA NANCE

FIFTH ROW (left to right)

FRANCES KIRKPATRICK
 MARGARET MARTIN
 LILLA TREASURE
 MARY LOUISE MILLIS
 MARY LOIS ALLEE

NOT PICTURED MARY SHELBY

TOP ROW (left to right)

MIRIAM MORELAND
BARBARA EBERSOLE
ARLEEN BOLES
MARGARET JOHNSON
MARGARET BRAND

SECOND ROW (left to right)

KATHRYN EVANS
LOUISE ROSEBROCK
ELEANOR CRAIG
CLAIRE DAWSON
BETTY BLACK

THIRD ROW (left to right)

MARY LOUISE FRANCISCO
VERDA ELLIOTT
JEANNE ANN PLUESS
ADA MARTIN
BETTY JEAN MCKAMEY

FOURTH ROW (left to right)

DONNA BOONE
JUDITH McTURNAN
RUHAMAH HANNAH
ANNE CONARTY
JEAN BERKEY

FIFTH ROW (left to right)

LYDIA SWIFT
ELOISE GOMPF
JUNE SHEARIN
JANE MENKE
BARBARA DEES

SIXTH ROW (left to right)

PATTY LOU PLUESS
ROBERTA POWELL
JANET WOOD
EVALOU HENDERSON
MARY JO BARKER

SEVENTH ROW (left to right)

MIRIAM COMMONS
MARGARET SCOTT
BILLIE LAWRENCE
ELEANORE WATTS
RUTH ANN GOES

EIGHTH ROW (left to right)

MADGE ASHTON
JUNE MARTINELLA
DOROTHY RAGER
MARTY SCHAN
ADELE FELIX

NINTH ROW (left to right)

RUTH CARSON
AUDREY HILL
FIONA MACGREGOR

NOT PICTURED
MARY VIRGINIA SNYDER



P H I M U

Phi Mu is the second oldest secret organization to be established for college women. It was founded at Wesleyan College, Macon, Georgia on January 4, 1852. The three founders, Mary Ann Dupont, Mary E. Myrick, and Martha Bibb Hardaway, did not publicly announce the Philomathean Society as it was then called until March 4, 1852. Phi Mu is particularly proud of its first three honorary members, Jefferson Davis, Robert E. Lee, and "Stonewall" Jackson.

A secret organization known as Phi Theta Nu was formed in the spring of 1911 by a group of Hanover College women. This group remained a local sorority until the seven charter members petitioned for and received a charter to establish the eleventh chapter of Phi Mu in the United States.

A U T O G R A P H S

LATE FRATERNITY PLEDGING

BETA THETA PI

Elmer Love
Indianapolis, Indiana

Bruce Williams
Greenwood, Indiana

William Sullivan
Vevay, Indiana

Richard Wells
Chicago, Illinois

PHI DELTA THETA

Miles Daubenhayer
Holton, Indiana

THETA KAPPA NU

Kenneth Waldo
Indianapolis, Indiana

ALPHA DELTA PI

Billie Kyger
Oxford, Ohio

Mollie Jean Dorsey
Kokomo, Indiana

June Anderson
South Bend, Indiana

SIGMA CHI

Roy Price
Connersville, Indiana

PHI MU

Irma Williams
Indianapolis, Indiana

RETURNED ACTIVES

PHI DELTA THETA

Wilford Hall
Rising Sun, Indiana

Lawson Lawrence
Mooresville, Indiana

PHI MU

Martha Saxe
Princeton, Indiana

ALPHA DELTA PI

Betty Williams
Greenwood, Indiana

STRAY GREEKS

DELTA TAU DELTA

John Chappell
Petersburg, Indiana

CALENDAR

Sept. 12—Freshman orientation . . . freshmen wonder what it is all about . . . rush begins in earnest.

13—Registration for freshmen . . . still in a daze . . . sign up for what sponsor suggests . . . pass Guthrie . . . meet Parker . . . pay Burger.

14—Upperclass registration . . . change mind several times . . . end up taking subjects disliked most.

15—Classes convene . . . still no lessons to prepare . . . what a wonderful experience.

23—Showboat docks at Hanover beach . . . boat nearly capsizes as audience rushes to one side to watch tobacco barn burn.

24—Dance to Herman Collins' music at Student Council dance in honor of Frosh.

28—Class elections . . . no labs in afternoon . . . Freshmen defeat Sophs in annual fight . . . rush show in Madison.

29—Y. W. C. A. conference at Franklin . . . cabinet attends.

Oct. 1—Hanover wins first football game . . . Hanover 14, Wabash 6 at Wabash.

2—Work starts on the new dormitory . . . hope they get it finished.

7—State police give safety tests to license campus cars . . . Model T's don't do so well.

8—Panthers defeat Central Normal 25-0 . . . now tied for conference first . . . keep it up, boys.

12—Intramural volley ball season opens . . . now watch the fun.

15—School hires busses to go to Terre Haute . . . Panthers top conference by defeating Indiana State 12-6.

18—Labor union trouble at new dorm . . . even at Hanover.

22—All college picnic at Clifty . . . no rain . . . everyone tired and full of hot dogs.

28—Hanover Players present *Hay Fever* by Noel Coward . . . good work, Don . . . good cast.

29—Homecoming and all that goes with it . . . Phi Delts win cup for best decorated house . . . Hanover wins Bat Club bell after defeating Franklin . . . good game to watch even if bleachers were scarce . . . Betas win cross-country race . . . Varsity "H" club dance in gym without the usual queen.

30—Headaches . . . wonder why.

31—Students strike for homecoming celebration . . . everyone receives two cuts . . . it was worth it . . . girls in dorm have Hallowe'en fire drill . . . some pranksters.

Nov. 5—Celebration just in time . . . Hanover loses next game to Ball State 0-9.

8—Students receive auto tags . . . can't attend class unless you have yours . . . better get those brakes tested.

11—Three hundred Louisville fans invade city . . . don't feel a bit sorry about defeating them 14-13 . . . "Revonah" dance picks Alice Robinson as queen.

12—Alpha Delta Pi fall formal at Nor Rose . . . a good time was had by all.

14—Dr. Elliot Porter comes for his annual speech . . . welcome Dr. Porter.

18—Evansville 18, Hanover 0, in the mud.

30—Fall Forum starts subject of piece . . . Independent Women win finals of freshmen debates.

CALENDAR

- Dec. 1—Smith and Dendinger achieve places on all-state team . . . keep it up next year.
- 2—*Invitation to a Murder* given by the Players . . . really spooky.
- 3—Theta Kappa Nu fall formal . . . dinner enjoyed first.
- 4—Phi Gam team wins volley ball tourney undefeated . . . basketball tourney next.
- 8—Y. M. C. A. decorates tree at dorm with lights . . . first signs of Christmas . . . Hanover wins opening basketball game 61-38.
- 10—Beta Theta Pi winter formal . . . even Santa Claus in person.
- 11—Y. W. C. A. annual Christmas breakfast at the Alpha Delt house . . . pecan rolls.
- 16—Home for vacation . . . no objections.
- 20—Fire in gym . . . almost got a new one that time . . . too bad.

- Jan. 1—Classes begin after a bad trip back on New Year's Day.
- 7—Phi Mu formal dance and bank night.
- 11—Sorry to say good-bye to Miss Moore . . . wonder what the new dean is like.
- 20—Football banquet . . . turkey for all who have the cash.
- 24—Exams begin . . . 'nough said.
- 27—Pop Off party at dorm . . . get rid of that exam feeling.
- 30—Registration begins all over again.

- Feb. 6—Faculty finally votes to change Easter vacation . . . can spend Easter at home.
- 10—No water . . . must think we're camels.
- 14—Heatless gym . . . what next.
- 20—Believe it or not the pumps work again . . . keep your fingers crossed.
- 24—W. A. A. carnival . . . fun for a mere penny

- Mar. 1—Pruett makes all-state basketball team . . . proud of it.
- 4—Interfraternity dance . . . mostly mud and rain.
- 11—Indianapolis turns Hanover . . . Phi Mus, Sigma Chis, Phi Delts, and Phi Gams have state dances.
- 12—Co-ed week begins . . . now give the girls a chance to show how it should be done.
- 15—Formal birthday dinner at the dorm . . . Dick Wells shines with his drums.
- 18—Pan-Hellenic formal dinner at Hillside and dance at new recreation hall in Madison—how was that, boys!

- Apr. 1—Theta Kappa Nu spring formal.
- 7—Spring vacation . . . and a much needed rest.
- 17—Back to school again . . . the final stretch.
- 22—Alpha Delta Pi spring formal . . . many rushees.
- 29—Phi Mu spring formal . . . more rushees.

- May 6—Phi Gamma Delta spring formal.
- 12—All college boat ride . . . Phi Delta Theta dance in evening.
- 13—Junior Prom . . . a big week-end.
- 20—Sigma Chi spring formal.
- 27—Beta Theta Pi spring formal.

- June 5-10—Examinations.
- 11—Baccalaureate services.
- 12—Alumni dance.
- 13—Commencement . . . and the end of another year.

Advertising

WHEN YOU THINK OF DRUGS THINK OF

HARPER'S

FOR ALMOST A CENTURY
STRICTLY A DRUG STORE
SERVING THE PUBLIC AND
THE MEDICAL PROFESSION

Now Better Than Ever Able To Serve You
With The Best In Drug Store Merchandise

HARPER'S

REXALL DRUG STORE

"Look For The Rexall Signs"

S H O E S

SEE

HEN and BEN

THE SHOE MEN

Madison, Indiana

ELECTRIC SERVICE

FOR

HANOVER

AND

HANOVER COLLEGE

Supplied by

MADISON LIGHT and POWER COMPANY

PHONE 287

Madison, Indiana

Compliments of

CLUB NOR-ROSE

C. R. Kleoppek, Mgr.

Madison, Indiana

“A Century of Reliability”

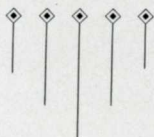
When a Madison business firm attains the near-age of dear old HANOVER, the faculty, student-body, and Alumni should be proud of, and patrons of, the

VAIL

FURNITURE STORE
— a n d —
FUNERAL SERVICE

NOT because of its antiquity merely, but for its meritorious, value-giving, service-rendering, experienced accomplishments for YOU and your proud forebears, through 100 years of our business activities.

**FOR MORE THAN
FIFTY YEARS
STUDENT HEADQUARTERS
IN MADISON**



**ROGER'S DRUG
STORE**

**MOUNTJOY
DRY CLEANER**



Madison, Indiana

KNOEBEL - BIRD

A Good Store for Students

Michaels-Stern Clothes

Dobbs Hats

Arrow Shirts

Interwoven Hose

Ralph T. Knoeble — J. H. Bird

Madison, Indiana

**MILLINERY
YARNS**

**CROCHET COTTONS
EMBROIDERY FLOSS
RIBBONS**

M. ERNST CO.

Madison, Indiana

Compliments of

GLASS DAIRY CO.

Madison, Indiana

The ELMER E. SCOTT Co.

Madison, Indiana

Sponsors

CLOVER FARM STORES

MASON-DIXON LINE DIVISION

Compliments of

**ROUSH'S
BOOKSTORE**

Madison, Indiana

HERTZ'S

Madison's Favorite Shoe Store

DR. J. H. HERTZ

Registered Podiatrist

Second Floor

Madison, Indiana

ALWAYS A STEP AHEAD IN
STYLING AND QUALITY IN ALL FOOTWEAR

MERIT SHOE STORE

The Entire Family
Saves On Merit Shoes
MADISON, INDIANA

CLIFTY FALLS STATE PARK

The scenic beauty of Switzerland trans-
posed to the Ohio River Valley.
Clifty Inn affords the convenience of a modern
hotel with reasonable rates.

MRS. DELLA LUKE, Mgr.
CLIFTY FALLS STATE PARK
MADISON, INDIANA

OSCAR C. BEAR

**JEWELER
AND
OPTOMETRIST**

~~~~~  
Madison, Indiana

## **FOOTWEAR**

**Hosiery - - Sport Sox**

**Newest Styles**

**Lower Prices      Better Shoes**

## **STANTON'S**

**Since 1858**

**Madison, Indiana**

*Compliments of*

**The Lodge Hardware Co.**

**Madison, Indiana**

## **DEMOCRAT PRINTING COMPANY**

**PRINTERS TO  
HANOVER STUDENTS**

**Madison, Indiana**



# HANOVER COLLEGE BOOKSTORE

Henry M. Lee, Manager

NOTE BOOKS—Loose Leaf and Bound

FOUNTAIN PENS and INK

COLLEGE JEWELRY and PENNANTS

Orders for PERSONAL BOOK SOLICITED

MAGAZINE SUBSCRIPTIONS

GIFTS for GRADUATION

USED BOOKS BOUGHT

REMINGTON TYPEWRITERS

DINE

With Your Guests In The

Gracious Dignity Of

**CRAVENHURST**

~~~~~  
Special Parties
~~~~~

Overnight Guests  
~~~~~

Phone 242

Madison, Indiana

Compliments of

THE OASIS

SANDWICHES — SHORT ORDERS

Madison, Indiana

Compliments of

THE COLLEGE CONFEC

Established Through Years of Service

ROY LAGRANGE, Prop.

Hanover

**THE
CAMPUS CABIN**

**Thanks You For
Your Loyal
Patronage**

DAN and JACK
Hanover, Indiana

Compliments of

The S. K. Smith Company

DAVID J. MALLOY PLANT

Makers of 1939 Revonah Covers

Chicago, Illinois

Compliments of

**LOWRY'S
BARBER SHOP**

Hanover, Indiana

The Oxford Printing Company

Printers and Publishers

Oxford, Ohio

YOUNG'S

The Place To Meet

Your Friends

Good Food

Soft Drinks

Madison, Indiana

OHIO RIVER ELEVATOR COMPANY COAL

PHONE 139

Madison, Indiana

Compliments of

PARDY'S RESTAURANT

Where friends meet and eat

Down on Mulberry Street

Madison, Indiana

GENUINE GAS COKE

DOMESTIC FUEL OF

HIGHEST QUALITY

NO SMOKE

NO SOOT

LOW ASH

MADISON UTILITIES CORP.

PHONE 282

MADISON, INDIANA

Photographs For This Book By

THE WHITE STUDIO

Largest Photographers for School Work

in Southeastern Indiana

MADISON

NORTH VERNON

W. H. MILLER and SONS

LUMBER

Millwork

and

Builder's Materials

Since 1886

Madison, Indiana

GOOD COAL

R. McKIM COAL COMPANY

PHONE 117

Madison, Indiana

EAST END GROCERY

QUALITY MERCHANDISE

ECONOMICAL PRICES

DELIVERY SERVICE

Phone 22

Hanover, Indiana

**GIBSON'S
Flower Shop**

Say It With Flowers

from

GIBSON'S

RUDELL and GETTINGER

Hanover Campus Agents

Madison, Indiana

**INGLIS
DRUG STORE**

*If It's Found in a Drug
Store - - We Have It!*

**The Meeting Place
For Hanover Students**

Madison, Indiana

Compliments of
HILL'S GROCERY

General Merchandise

Hanover, Indiana

**For Better
PASTRIES
Go To
HENTZ BAKERY**

Madison, Indiana

Compliments of
KYLE'S GROCERY

REED'S LAUNDRY

HANOVER'S FRIEND

FOR 46 YEARS

W. N. WILLIAMS, Agent

REED'S LAUNDRY

210 West Main Street, Madison, Indiana

JOHN KNOEBEL AND SON

**MADISON'S BEST
CLOTHING
HOUSE**

Madison, Indiana

FOOTBALL SCHEDULE 1939

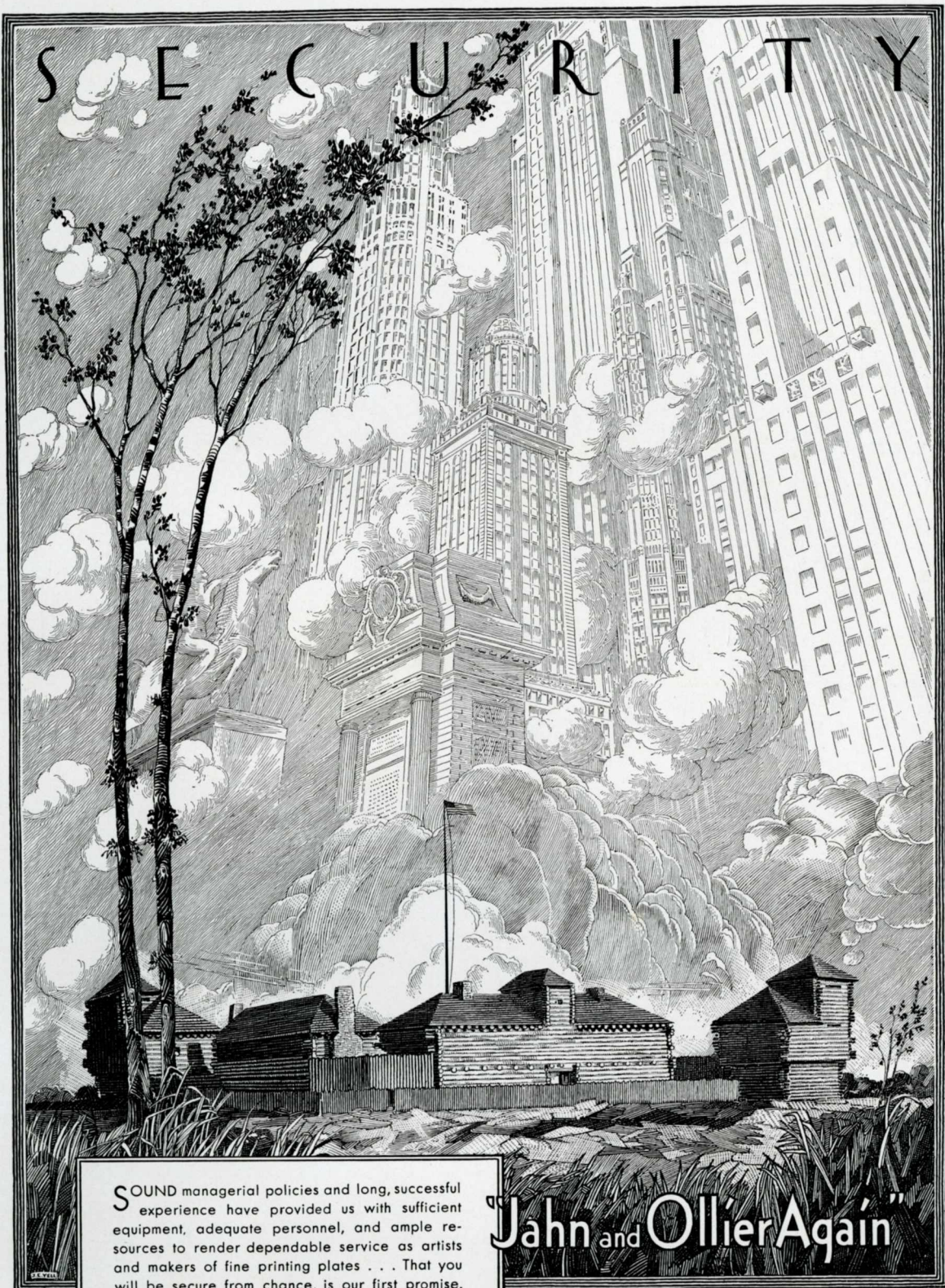
Sept. 30—DePauw, there
Oct. 1—Wabash, here
Oct. 7—Illinois College, here
Oct. 14—Manchester, there
Oct. 28—Franklin, there
Nov. 4—Evansville, here
Nov. 11—Rose Poly, here
Nov. 18—Louisville, there

COLLEGE CALENDAR 1939-40

Sept. 11—Freshman orientation
Sept. 12—Freshman registration
Sept. 13—Upperclass registration
Sept. 14—Classes convene
Nov. 30—Thanksgiving Holiday
Dec. 15—Christmas vacation begins
Jan. 2—Vacation ends
Jan. 22-
28—First semester examinations

Jan. 29—Freshman registration for
second semester
Jan. 30—Upperclass registration
Jan. 31—Second semester classes
convene
Mar. 22—Spring vacation begins
April 1—Vacation ends
June 3-8—Second semester examinations
June 9—Baccalaureate services
June 10—Alumni Day
June 11—Commencement Exercises

SECURITY



SOUND managerial policies and long, successful experience have provided us with sufficient equipment, adequate personnel, and ample resources to render dependable service as artists and makers of fine printing plates . . . That you will be secure from chance, is our first promise.

JAHN & OLLIER ENGRAVING CO.
817 West Washington Blvd. - Chicago, Illinois

"Jahn and Ollier Again"

ILLUSTRATION BY JAHN & OLLIER ART STUDIOS OF FORT
DEARBORN RE-ERECTED IN BURNHAM PARK, CHICAGO

Compliments---

**THE CLASS OF
1940**

