



REVONAH

1 9 3 6

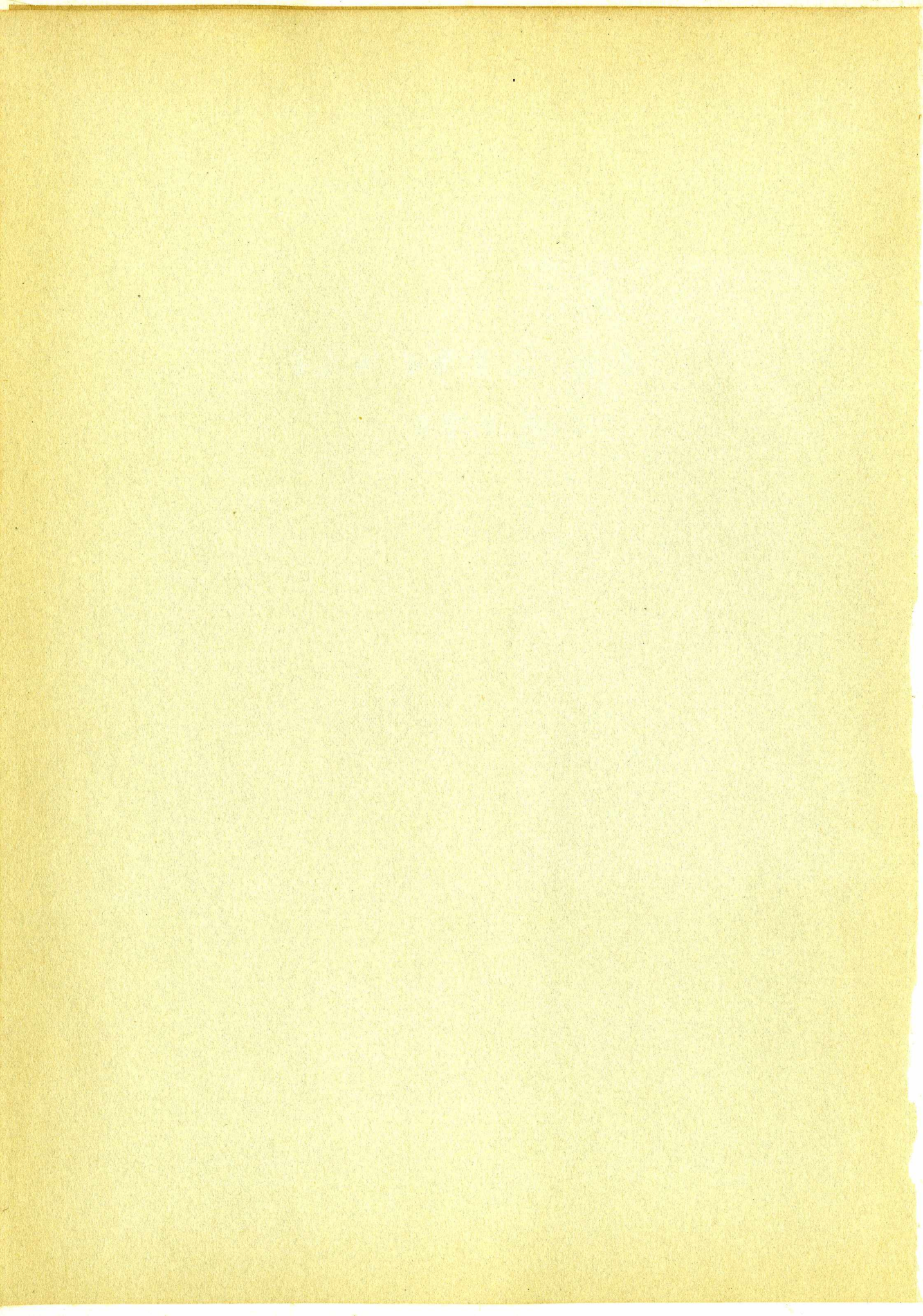






David Hancock     $\Sigma X$     '36







**THE DEVONAH**  
**- 1936 -**

FRED WARD  
Editor

ROBERT HORTON  
Business Manager





## CLASSIC HALL

"Old Classic" forms a great part of the memories of every Hanover student. This staunch building has stood for nearly a century on the college point, overlooking the Ohio River three hundred feet below.



**R**  
**E**  
**1** **V** **9**  
**H A N O V E R**  
**3** **N** **6**  
**A**  
**H**

PUBLISHED BY THE JUNIOR CLASS  
HANOVER COLLEGE  
HANOVER, INDIANA



# FOREWORD

---

---

No matter how ornate or lengthy a college annual may be, the true value is lost if it does not recall to its possessor the cherished memories of his college days. In college one broadens his character and his physical self as well as his mind; he makes numerous contacts and learns to work with others. The editor of this annual hopes to preserve for the reader a simple, yet true, record of this life that lasts four years and never comes again.

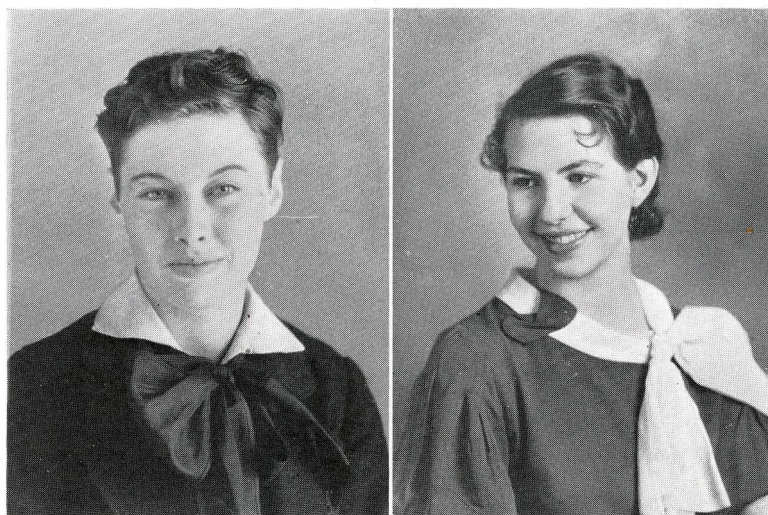
If this publication, with its several pages, merely serves to remind a football man of his struggles on the gridiron, or a girl of her participation in some of the activities on the Hanover campus; if this Revonah calls up some past deed in every reader's mind, the editor shall have accomplished his purpose.

—The Editor





# In Memoriam



JEAN BAKER

ΦΜ

RUTH HOWARD

ΛΔΠ

(March 1, 1915 — Nov. 21, 1935) (March 28, 1916 — March 4, 1936)



To the memories of these two, this issue of  
the "REVONAH" is respectfully dedicated.







# FACULTY



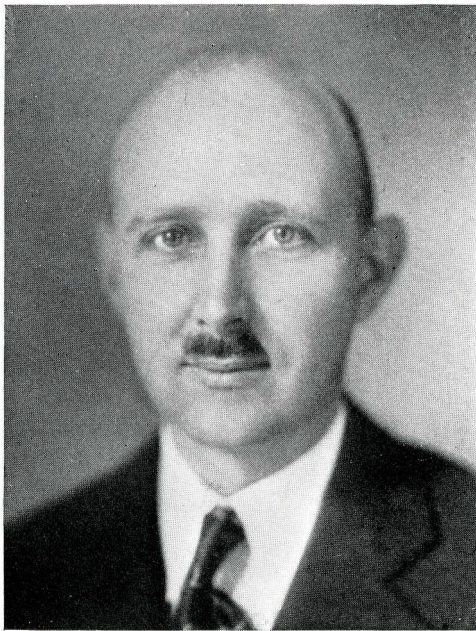


In a school the size of Hanover, each student has the opportunity to become acquainted with every other student. Similarly, the faculty members are able to know each student personally—his faults and good points. In the intimate contact of everyday classes, which would be impossible in much larger classes, the instructors are better able to correct the faults, and to build up the good points; there is a greater interest developed in both parties, which is a benefit to all concerned.





The President's Home — Always Open to Students



DR. ALBERT G. PARKER, II

Dr. Parker is a man of wide experience, having served as a missionary in the Far East. He received the degree of A. B. from Park College, B. D. from the Chicago Theological Seminary, Ph. D. from University of Chicago, and LL. D. from Wabash College, and is very well known in educational circles.

During the seven years that he has served as President of Hanover College, Dr. Parker has made numerous advances, both in enrollment and general improvement.

In a college of Hanover's size, the president, as well as the faculty, is able to know each student personally and intimately. Because of this, the student receives more attention and interest than would otherwise be possible.

Student problems are ably handled by Dr. Parker, who is a willing and kind advisor to every student.



# FACULTY

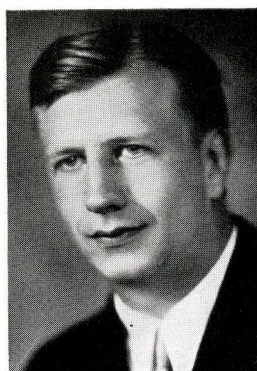
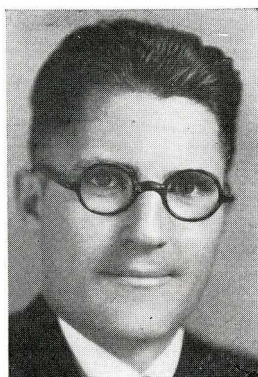


HENRY W. BURGER  
Secretary-Treasurer  
B. S. Hanover College  
B. D. McCormick Seminary  
D. D. Hanover College  
Phi Gamma Delta,

JEAN J. ANDERSON  
Professor of Modern  
Languages  
A. B. Indiana University  
A. M. Indiana University  
Travel and Study in Europe

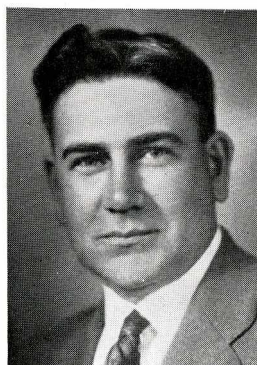
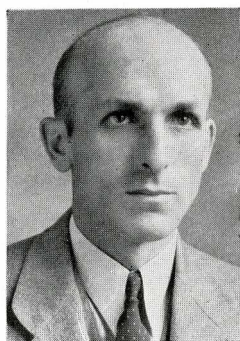


RUSSEL M. KUTZ  
Professor of Education and  
Director of Teacher  
Training  
A. B. Wisconsin University  
A. M. Wisconsin University  
Ph. D. Wisconsin University



HERBERT A. MEYER  
Professor of Mathematics  
B. S. Des Moines University  
M. S. Iowa University  
Ph. D. Iowa University

MARK L. ENTORF  
Professor of Social Science  
and Psychology  
A. D. Grinnell,  
Additional work at the  
University of Columbia,  
Chicago, and Harvard

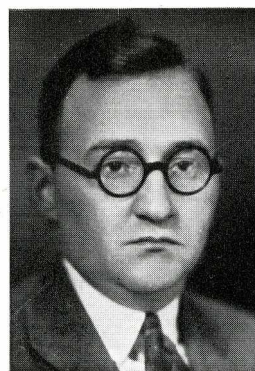


JOSEPH L. HYATT  
Professor of Biology  
B. Ed. Illinois State Normal  
M. S. Illinois University  
Additional work at Indiana  
University



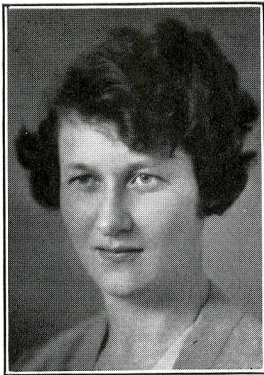
RUSSELL H. FITZGIBBON  
Professor of History  
A. B. Hanover College  
A. M. Indiana University  
Ph. D. University of Wisconsin  
Phi Delta Theta  
Alpha Phi Gamma  
Pi Gamma Mu  
Gamma Sigma Pi

NED GUTHRIE  
Professor of Chemistry  
B. S. Illinois Wesleyan  
M. S. Illinois  
Additional work at Illinois  
Alpha Delta Alpha





# FACULTY



VIOLA MITCHELL  
Director of Physical  
Education for Women  
A. B. DePauw University  
M. A. University of Iowa

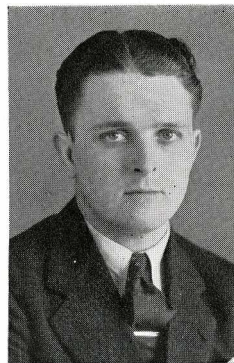
MARY LOUISE FITTON  
Librarian  
A. B. Indiana University  
B. S. (Library Science)  
Columbia University  
Alpha Omega Pi  
Alpha Phi Gamma  
Phi Beta Kappa  
Mortarboard



JOHN M. VAN LIEW  
Director of Men's Physical  
Education  
B. S. University of Illinois  
Additional work at Illinois,  
Columbia, Notre Dame,  
Harvard and Drake



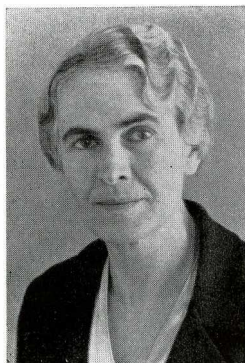
CLIFFORD ADAMS  
Instructor in Geology  
A. B. Hanover College  
Gamma Sigma Pi  
Delta Epsilon  
Sigma Chi



R. EARL MARTIN  
Professor of Physics  
A. B. Indiana University  
M. S. Lehigh University  
Ph. D. Indiana University  
Theta Kappa Nu



MRS. ALBERT H. WATTS  
Instructor in Education  
A. B. Franklin College  
B. S. Columbia University  
Pi Beta Phi



ELLEN W. MOORE  
Dean of Women and  
Associate Professor of  
English and German  
A. B. University of Michigan  
A. M. University of Michigan  
Ph. D. University of Michigan  
Mortarboard  
Phi Beta Kappa

ANNA MARIE FISHER  
Instructor in Education  
B. S. Ball State Teachers'  
College



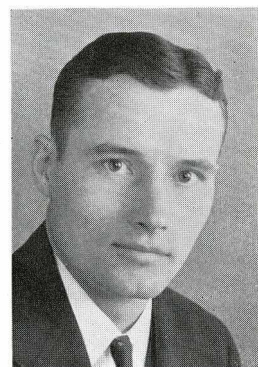


# FACULTY

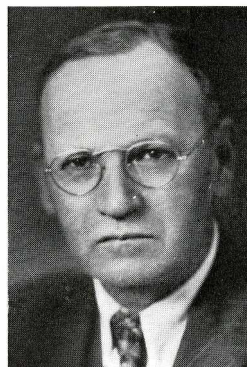
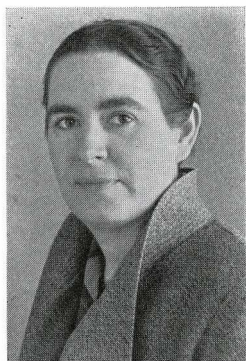


ROBERT W. McEWEN  
Professor of Philosophy  
and Bible  
A. B. Macalester College  
B. D. Presbyterian Theological  
Seminary  
A. M. Chicago University  
Ph. D. Chicago University  
Phi Kappa Delta  
Sigma Chi

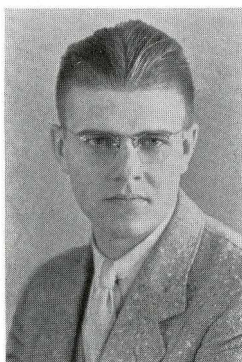
BRICE W. BAIN  
Professor of Economics  
and Business Adminis-  
tration  
B. S. University of Illinois  
A. M. University of Illinois  
Alpha Kappa Lambda  
Phi Beta Kappa  
Phi Eta Sigma



EVELYN H. SCHOLL  
Professor of English  
M. A. University of Michigan  
A. B. University of Michigan  
Ph. D. University of Michigan  
Phi Beta Kappa



HENRY M. LEE  
Assistant Librarian and  
Manager of College  
Book Store  
A. B. Hanover College



J. JEFFERE AUER  
Instructor in Public  
Speaking  
A. B. Wabash College  
M. A. University of  
Wisconsin  
Kappa Sigma  
Tau Kappa Alpha  
Pi Delta Epsilon  
Blue Key

GERALD HAY  
Assistant in Physical  
Education for Men  
A. B. Hanover College  
Sigma Nu



EVELYN DEAN GARDNER  
Instructor in Physical  
Education  
A. B. Hanover College  
Additional work at Indiana  
University  
Gamma Sigma Pi  
Alpha Phi Gamma



CHARLES C. HOWER  
Professor of Ancient  
Languages  
A. B. North Central College  
A. M. University of Illinois  
Additional work at Univer-  
sity of Illinois

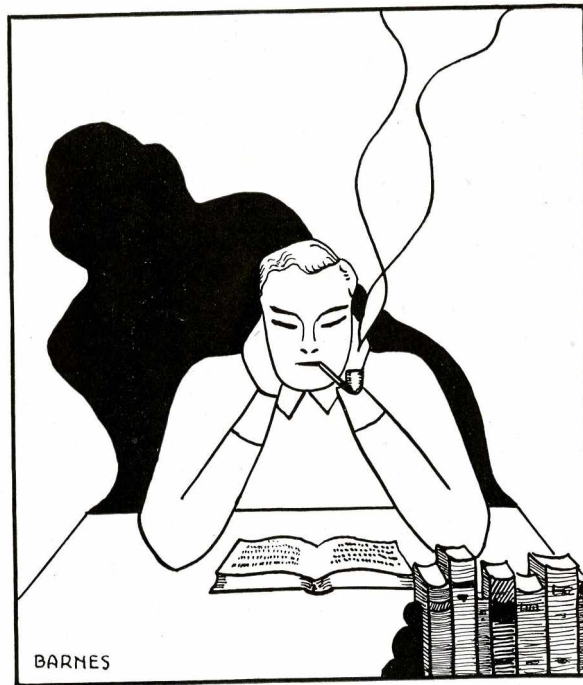
ARTHUR R. HOGUE  
(Not Pictured)  
Assistant Professor of  
History  
A. B. Oberlin College  
M. A. Harvard University  
Ph. D. Harvard University

W. MAXWELL POLAND  
Director of Music  
B. S. Ball State College  
Additional work at the Uni-  
versity of Michigan





# CLASSES





# SENIORS



GUENTHER  
HOLSAPPLE  
MARSHALL  
MARTIN

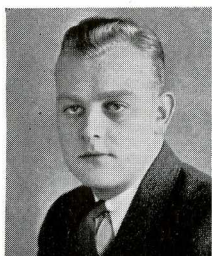
What a great change is symbolized by a bit of parchment, some lines of print, and a few penned names. It is, rather than a diploma, a pass from college into the outside business and professional world.

The Seniors have been our guides in college, and have done the job well. They have been well represented in all lines of college activity they have taken an active part in all school work; they have triumphed so far in life. What next? Where now?

The senior has reached the peak in his scholastic career. These select few will have all the advantages of a thorough education, and a distinct advantage over less fortunate persons. How will they meet the problems of the world? Where will they be a year from today? Ten years? They have proved themselves capable at Hanover; therefore, let us join in wishing them the greatest success in anything they attempt.



# SENIORS



VINCENT GUENTHER

Φ Δ Θ

Jeffersonville, Ind.

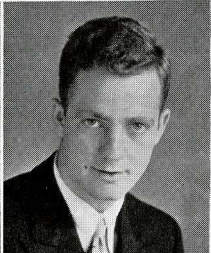
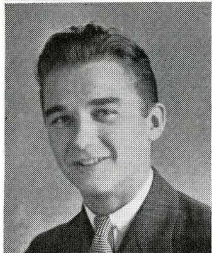
Football 1, 2, 3, 4; All-star Center 4; Baseball 1; Track 3, 4; Intramurals 1, 2, 3, 4; Sphinx Club 2, 3, 4; Interfraternity Council 2, 3, 4; State Interfraternity Council President 3, 4; Varsity "H" Club 1, 2, 3, 4; Senior Class President.

MARTHA IONE HAMBLÉN

Α Δ Π

Winchester, Ind.

Y. W. C. A. Cabinet 1, 2, 3, 4; Student Council 1, 2; French Club 1, 2, 3; President 2, 3; Choir 2, 3; Treasurer 2; Dramatic Club 1, 2, 3, 4; Vice-President 3; President 4; Women's Student Government 1, 2, 3; Winner Free throw Tournament 2; Science Club 1; W. A. A. 1, 2; Secretary Junior Class.



PAUL E. MARTIN

B Θ Π

Santa Claus, Ind.

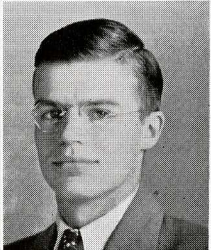
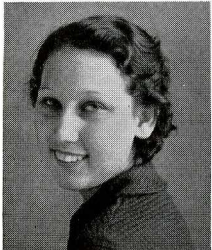
French Club 1, 2; Science Club 1, 2, 3; Band 1; "Revonah" Board of Control 3.

WOODROW W. FLEMING

Φ Γ Δ

Milan, Ind.

Dramatic Club 1, 2, 3, 4; Educational Club 1, 2; Science Club 4; Football 4; Intramurals 1, 2, 3, 4; Y. M. C. A. 1, 2, 4; Student Council 1, 2.



KATHERINE HINES

Φ Μ

Indianapolis, Ind.

Y. W. C. A. 1, 2, 3; French Club 1, 2; W. A. A. 1; Varsity Sports 1, 3.

ROBERT FOSTER

Θ Κ Ν

Indianapolis, Ind.

Football 1, 2, 3, 4; Intramural Sports 1, 2, 3, 4; "Triangle" Staff 2; Junior Class Treasurer; Intramural Debates 2, 3; Track 2, 4; Student Council 2; Religious Vocations Club 3, 4.

CHARLES HUTCHINGS

Φ Γ Δ

Indianapolis, Ind.

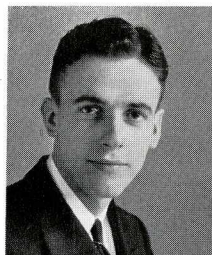
"Triangle" Staff 2; Intramurals 2, 3, 4; Track 2; Interfraternity Council 3, 4; Varsity "H" Club 2, 3, 4.

LUCILLE SHACKLETTE

Α Δ Π

Jeffersontown, Ky.

Panhellenic Council 2, 3; President 4; W. A. A. 1, 2; Dramatic Club 1, 2, 3, 4; French Club 1, 2; Student Council 3, 4.



CHARLES K. McHARRY

Φ Δ Θ

Madison, Ind.

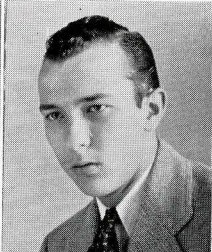
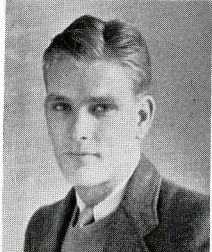
"Triangle" Staff 3, 4; Editor 4; Intramurals 1, 2, 3, 4; Varsity Tennis 1, 2, 3.

WILLIAM MAKOWSKY

Φ Δ Θ

Sellersburg, Ind.

Intramurals 1, 2, 3, 4; Science Club 1; Social Science Club 1; Varsity Football 2, 3, 4; Varsity Basketball 2, 3, 4; Varsity Baseball 2, 3, 4; Varsity "H" Club 2, 3, 4.



ETHEL SWENGEL

Seymour, Ind.

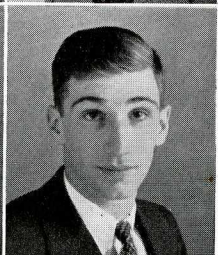
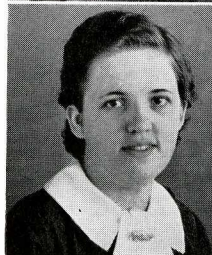
Freshman Debates; Classical Club 1; Science Club 2; Independent Women's Club 1, 2, 3, 4; Y. W. C. A. 1, 2, 3, 4; Gamma Sigma Pi 4; Women's Student Government.

JOHN YOUNG

B Θ Π

Hanover, Ind.

Varsity Football 1, 2; French Club 1, 2; Intramurals 1, 2.





# CLASS



DONALD MEDCALF

Θ Κ Ν

Dale, Ind.

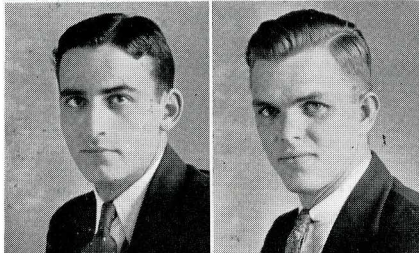
French Club 1, 2; Science Club 2, 3, 4; Varsity Debate 3, 4; Intramural Debates 3; Band 1, 2, 3; Interfraternity Council 3, 4; Student Council 2, 3, 4; President 4; Business Manager of "Revonah" 3; Intramurals Manager 2, 3, 4.

MARION MARSHALL

Φ Μ

LaPorte, Ind.

W. A. A. 1, 2, 3, 4; French Club 1, 2, 3, 4; President 4; Treasurer 2, 3; Senior Class Secretary 4; Science Club 1; "Triangle" Staff 1; Student Council 2, 3; Panhellenic Council 4; Varsity Athletics 1, 2, 3, 4; Y. W. C. A. 1, 2, 3, 4; Freshman Debates.



DAVID HANCOCK

Σ Χ

Goodland, Ind.

John B. Goodrich Oratorical Contest Winner 4; Y. M. C. A. 1, 2; Vice-President 3, 4; Choir 1, 2, 4; President 3; Dramatic Club 2, 3, 4; Gamma Sigma Pi 4; Religious Vocations Club 3; President 4; Social Science Club 3; Sphinx Club 3; Secretary-Treasurer 4.

CECIL POE

Θ Κ Ν

Corydon, Ind.

Varsity Football 1, 2, 3; Intramural DeDates 1; Science Club 1, 2.



MARYDEE SNYDER

Α Δ ΙΙ

South Bend, Ind.

Freshman Debates; German Club 1, 2, 3; W. A. A. 1, 2, 3, 4; W. A. A. Board 1, 2, 4; President 3; Choir 4; Y. W. C. A. 1, 2, 3, 4; Junior Class Vice-President; Panhellenic Council 2, 3; Varsity Athletics 1, 2, 3, 4; Chapel Committee 4; Student Government 4; Intramurals 1, 2, 3, 4.

RAYMOND E. HINDS

Β Θ ΙΙ

Salem, Ind.

Y. M. C. A. 1, 2; Freshman Debates; Intramurals 1, 2, 3, 4; Dramatics Club 3, 4; Interfraternity Council 3; Science Club 1, 2, 3; Social Science Club 1, 2.

RALPH SCHOOLCRAFT

Θ Κ Ν

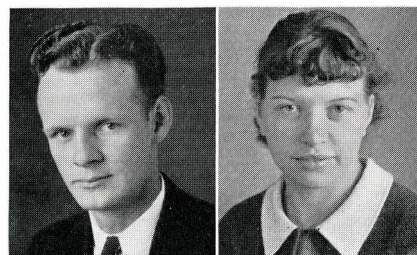
Butlerville, Ind.

Baseball 2; Football 3, 4; Intramurals 1, 2.

JOSEPHINE LEE TAGGART

Φ Μ

Brookville, Ind.



JAMES A. HEICHELBECH

Σ Χ

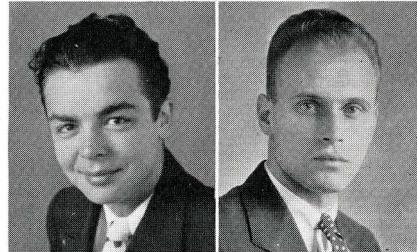
Dale, Ind.

Student Council 1, 2, 3, 4; German Club 2, 3; Science Club 2, 3, 4; Secretary-Treasurer 3, 4; Intramurals 2, 3, 4; Varsity Baseball 1, 2, 4.

ARTHUR J. WHALLON

Β Θ ΙΙ

Richmond, Ind.



POLLY GILL

Α Δ ΙΙ

New Albany, Ind.

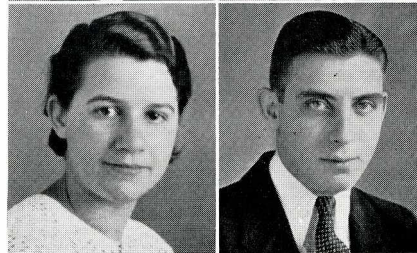
French Club 1, 2; Science Club 1, 2; W. A. A. 1, 2, 3, 4; W. A. A. Board 3; President 4; Varsity Athletics 1, 3, 4; Y. W. C. A. 1, 2, 3, 4; Women's Student Government 2.

WILLIAM ELLIS

Φ Γ Δ

French Lick, Ind.

Spanish Club 1, 2; Y. M. C. A. 1, 2; Science Club 1; Intramurals 1, 2; "Triangle" Staff 1, 2.





# OF 1936

MARGARET SCOTT

Φ M

Columbia City, Ind.

Y. W. C. A. Cabinet 3, 4; President 4; Dramatic Club 1, 2, 3, 4; Classical Club 1; Social Science Club 3; Freshman Debates; Triangle Staff 3, 4; Gamma Sigma Pi 2, 3, 4; Choir 1, 2, 3, 4; College Trio 3, 4.

JOHN P. LEE

Δ T

Rochester, N. Y.

University of Rochester 1; Science Club 2, 3, 4; Varsity Baseball 2, 4; Varsity Basketball Manager 4; Intramurals 2, 3, 4; Independent Men's Club 2, 3; Varsity "H" Club; Intramural Board 3, 4.



EDWARD W. BOONE

Σ X

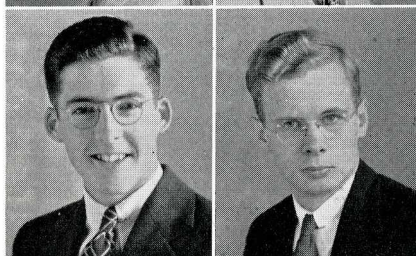
Shanghai, China

Band 1, 2, 3; Choir 4; German Club 1, 2; Science Club 1, 2, 3, 4; Social Science Club 3; Gamma Sigma Pi 2, 3, 4; Secretary 3; Intramural Debates 2, 3; Varsity Debates 3; Intramurals 1, 2, 3, 4.

GERALD W. NORCROSS

Mooreville, Ind.

Freshman Debates; Science Club 1, 2, 3; Gamma Sigma Pi 2, 3; Independent Men's Club 3, 4.



RAY HURST

Φ Δ Θ

Cleveland, Ohio

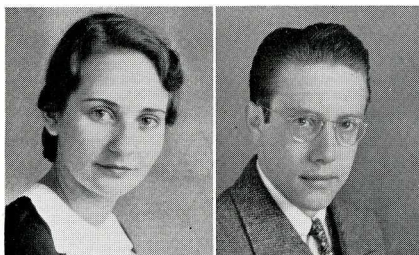
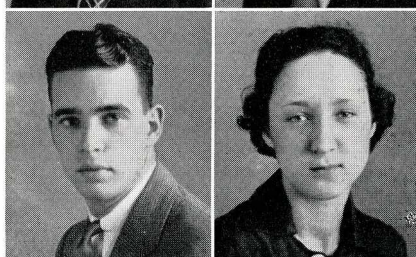
Baldwin Wallace College 1, 2; Intramurals 3; Varsity Football 3.

MILDRED HOLSAPPLE

Δ Δ II

Salem, Ind.

Alpha Phi Gamma; Associate Editor Triangle 2, 3, 4; Gamma Sigma Pi; Social Science Club; Vice-President Senior Class; French Club 2.



HELEN MERZ

Δ Δ II

Cincinnati, Ohio

Women's Student Government Council 2, 3; President 4; "Triangle" Staff Reporter 1; Y. W. C. A. 1, 2, 3, 4; Alpha Phi Gamma 2, 3, 4; Secretary 3; Classical Society 1; Science Club 1; W. A. A. 1.

BURKERT FRIEDERSDORF

B Θ II

Madison, Ind.

Intramural Debates 1, 2; Varsity Debates 2; Dramatic Club 1, 2; 3, 4; French Club 1, 2; Social Science Club 3; Alpha Phi Gamma 2, 3; President 4; Sphinx Club 3, 4; "Triangle" 1, 2, Editor 3; Bus. Mgr. 4; Interfraternity Council 3; President 4.

MAX HEALEY

Φ Γ Δ

Indianapolis, Ind.

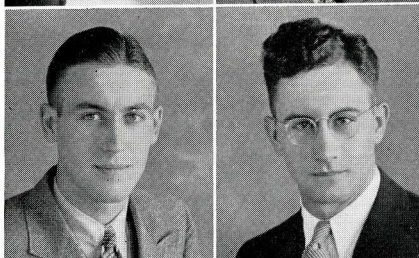
Editor-in-Chief of "Revonah" 3; Junior Class President; German Club 1, 2; President 3; Gamma Sigma Pi 3; Alpha Phi Gamma 2, 3, 4; Sphinx Club 3, 4; Social Science Club 3; Dramatic Club 1, 2, 3; Intramural Debates 2, 3; Varsity Debate Squad 2, 3; Choir 1; Student Council 2; Eli Mace Contest Winner 2.

HAROLD DENTON

Θ K N

Butler, Ind.

Varsity Football 1, 2, 3, 4; Varsity Basketball 1, 2, 3, 4; Varsity Baseball 1, 2, 3, 4; Varsity Track 1, 3, 4; Varsity "H" Club 2, 3, 4.



ROBERT THOMAS

Φ Γ Δ

Hardin, Mo.

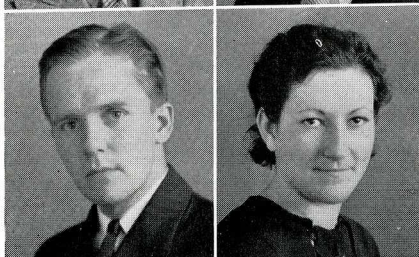
Y. M. C. A. President 3, 4; Religious Vocations Club; Social Science Club; French Club 3, 4; Treasurer 4.

RUTH PERRIN

Φ M

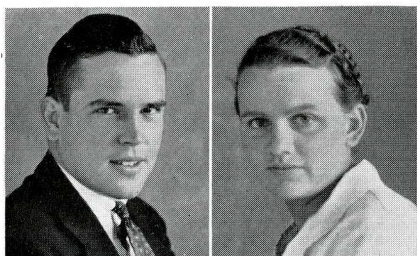
Cincinnati, Ohio

French Club 1, 2; Gamma Sigma Pi 2, 3, 4; W. A. A. Board 2, 3; Social Science Club 3.





# SENIORS



JESSE YOUNG  
Frankfort, Ind.

ELEANOR C. THORNTON  
Hanover, Ind.

W. A. A. 1, 2, 3, 4; Board 3;  
Y. W. C. A. 1, 2, 3, 4; French  
Club 1, 2; Choir 3, 4; Religious  
Vocations Club 3, 4; Secretary  
3; Varsity Hockey, Soccer, Speed-  
ball, Track, 1, 2, 3, 4.



ROZELLE BECK  
Φ M  
North Vernon, Ind.

CLIFFORD E. MURPHY  
Φ Γ Δ  
Scottsburg, Ind.

"Triangle" Staff 2, 3, 4; Y. M. C.  
A. Cabinet; Secretary-Treasurer  
3; Science Club 2, 3, 4; Varsity  
Track 1 2; Intramurals 1, 2, 3, 4.



PAUL DAVIS  
Hanover, Ind.  
Science Club 1, 2, 3, 4.

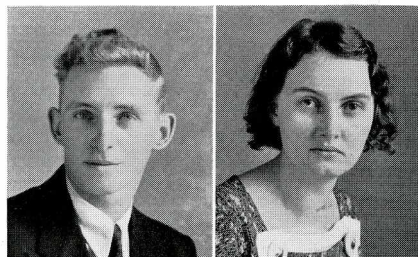
BLANCHE HALL  
LaPorte, Ind.

Gamma Sigma Pi 2; Vice-Presi-  
dent 3; Secretary 4; Spanish  
Club 1; French Club 4; Social  
Science Club 3; Y. W. C. A. 3,  
4; President Independent Wom-  
en's Club 4; Student Council  
3, 4; Varsity Debates 3; Winner  
Goodrich Oratorical Contest 3;  
Winner Blythe Oratorical Con-  
test 3.

CLARENCE BOYER  
Otto, Ind.

CATHERINE COMPTON  
Boggs town, Ind.

Spanish Club 1, 2; Religious Voca-  
tions Club 3, 4; Independent  
Women's Club 2, 3, 4; Treasurer  
3; Y. W. C. A. 3, 4.

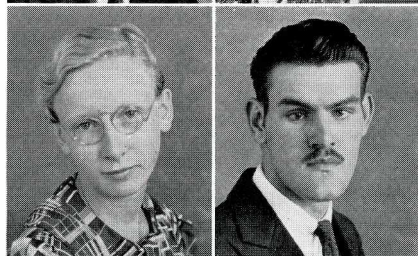


MARTHA DUNN ADAMS  
Hanover, Ind.

Independent Women's Club 1, 2,  
3, 4; W. A. A. 2; Y. W. C. A.  
1, 2, 3, 4.

G. FREDERICK WARN  
Σ X  
Milan, Ind.

Varsity Track 1, 2, 3, 4; Bas-  
ketball 1, 2; Varsity "H" Club  
1, 2, 3, 4; Science Club 1, 2, 3,  
4; French Club 1, 2, 3, 4; Vice-  
President 4; Intramural Debates  
1 2, 3; Vice-President Freshman  
Class; Varsity Debates 4; Gamma  
Sigma Pi 3, 4; Intramurals 1, 2,  
3, 4; Y. M. C. A. 1, 2, 3, 4.

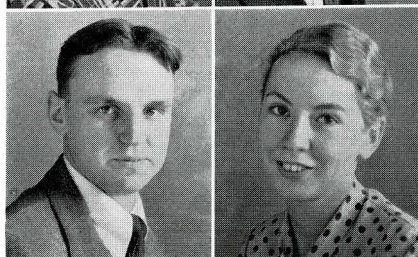


AUSTIN W. WALKER  
Worcester, Mass.

Nichols Junior College 1, 2;  
Athletic Trainer 3 4; "Triangle"  
Staff 3, 4.

MARY ADAMS  
Hanover, Ind.

Freshman Debates; Y. W. C. A.  
1, 2, 3, 4; W. A. A. 1, 2; Wom-  
ens Student Government Coun-  
cil 3; Science Club 3, 4; French  
Club 4; Independent Women's  
Club 1, 2, 3, 4.





# SENIORS

MARY RUTH PALMER  
Π Β Φ

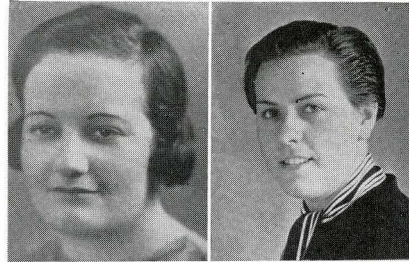
Lebanon, Ind.

Butler 1; DePauw 2; Alpha Phi  
Gamma 3, 4; Y. W. C. A. 3;  
Cabinet 4; Choir 3; President 4;  
"Triangle" Staff 3, 4.

MONA BEERY  
Φ Μ

South Bend, Ind.

W. A. A. 1 2 3 4; Secretary-  
Treasurer 3; Y. W. C. A. 1, 2,  
3, 4; French Club 2, 3; Science  
Club 3, 4; Varsity Hockey and  
Soccer 2, 4; Varsity Volleyball 3,  
4; Varsity Baseball and Speed-  
ball 1, 2, 3; Women's Student  
Government 4.



GENEVA FURNISH  
Α Δ Π

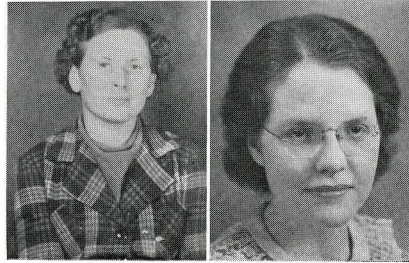
Henryville, Ind.

W. A. A. 1, 2; W. A. A. Board  
3, 4; Varsity Sports 1, 2, 3, 4.

LORENA M. RYMAN  
Φ Μ

Lewisville, Ind.

Glee Club 1, 2; Student Council  
1, 2; French Club 1, 2; W. A. A.  
1, 2; Y. W. C. A. 1, 2, 3, 4;  
Choir 1, 2, 3, 4; Student Gov-  
ernment 4.



— NOT PICTURED —

LANGDON GUEUTAL  
Φ Γ Δ

Indianapolis, Ind.

Dramatic Club 2, 3, 4; Business  
Manager 3, 4; Sphinx Club 2,  
3, 4; Treasurer of Interfraternity  
Council 4; French Club 4.

CHARLES STUCKEY  
Thorntown, Ind.

Varsity "H" Club 1, 2, 3, 4;  
Baseball 1, 4; Track 3, 4; Foot-  
ball 1, 2, 3, 4; Science Club 1;  
Basketball 1, 3, 4; Intramurals 2.

CARL D. HAMMOND  
Φ Γ Δ

Danville, Ohio

Football 1, 2, 3, Capt. 4; Bas-  
ketball 4; Track 4; Baseball 3,  
Capt. 4; May King 4.





# JUNIORS



DeWITT  
ARNOLD  
BRUMBAUGH  
HOOTEN

As the college years progress, from freshmen to senior, some students drop from the college roll, making the classes smaller as they climb toward the top. This year's Junior Class is to be commended for having quite as many members as the Senior Class. They are a determined, eager group, anxious to succeed.

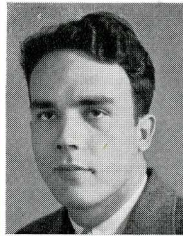
A great deal of work is placed on the shoulders of the Juniors, and it is in that year that the Junior decided his vocation and major subject. Next year he will assume the responsibilities of a Senior, wear yellow corduroys, and padd'e the Freshmen at the circle.

The Junior Class gives the Junior Prom every year, edits the Revonah, and is prominent in many other campus activities.



# JUNIORS

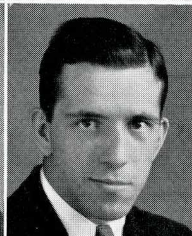
PAUL BENNETT  
Dillsboro, Ind.



KIRBY PENDER  
Hanover, Ind.

Science Club 1; Y. W. C. A. 1, 2, 3; W. A. A. 1, 2, 3; Varsity Baseball 1; Soccer 2; Hockey 2, 3; Volleyball 2, 3; Tennis Singles Winner 2, 3; Tennis Doubles 1, 2.

MARY M. DOWNS  
A Δ II  
Booneville, Ind.

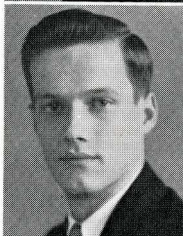


HUGH ESPEY  
B Θ II

Football 1, 2; German Club 1, 2; Band 1, 2, 3; Intramurals.

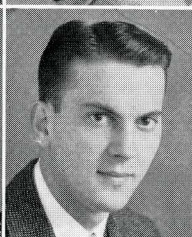
Y. W. C. A. Cabinet 3; Dramatic Club 3; Vice-President Sophomore Class.

ROBERT HENNING  
Φ Δ Θ  
Hanover, Ind.



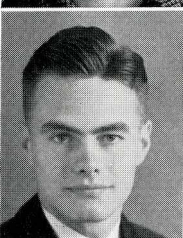
DORIS STAHL CUP  
Φ M  
Paoli, Ind.

KATHERINE CAIN  
Columbus, Ind.



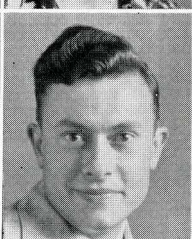
ROGER SANDERS  
Φ Γ Δ  
Warsaw, Ind.

CHARLES POTTER  
Φ Δ Θ  
Madison, Ind.



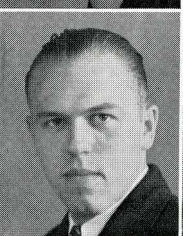
RUTH MARSHALL  
Madison, Ind.

MARY SCHNELL  
Madison, Ind.  
Y. W. C. A. 1; W. A. A. 1.



FRED FEASLEY  
Mazon, Ill.  
Science Club 1 2 3; Freshman Debates; German Club 1 2; Intramurals 1.

GEORGE KIRK ERGANG  
Σ X  
Chicago, Ill.



FRANCES GABEL  
A Δ II  
Hanover, Ind.  
Y. W. C. A. 1, 2, 3; W. A. A. 2, 3.

North Park Junior College 1, 2; Football 3; Choir 3; Band 3; Debate Squad 3; Dramatic Club 3; Y. M. C. A. 3; Intramurals 3; Track 3.



# CLASS

PHIL ALLISON

Φ Γ Δ.

Gardner, Ill.

Choir 1; Band 1, 2; Science Club 1, 2; Freshman Debates; Intramurals Manager 2, 3; Student Board Council 3; "Triangle" Staff 1, 2, 3; Advertising Manager 3; "Revonah" Board of Controls 3.

JEAN BAKER

Φ M

1915-1935

(Deceased)

Alexandria, Ind.

GEORGE GROSSNICKLE

Φ Δ Θ

Elkhart, Ind.

Football 1, 2, 3; Sphinx Club 3; Interfraternity Council 3; Varsity "H" Club 1, 2, 3.

EDITH GINGERY

Φ M

Indianapolis, Ind.

Y. W. C. A. 1, 2, 3; French Club 2, 3; Science Club 3; Dramatic Club 2, 3.

FRED LOGAN

Φ Γ Δ

Plymouth, Ind.

German Club 2; Science Club 2, 3; Intramurals 1.

ELIZABETH FREEMAN

LaPorte, Ind.

Independent Women's Organization 1, 2, 3; Vice-President 2, President 3; Y. W. C. A. Cabinet 3; W. A. A. Board 3; Women's Student Government Body 3; Gamma Sigma Pi 3.

ROBERT HORTON

Φ Δ Θ

North Bend, Ohio

Gamma Sigma Pi 2, 3; Vice-President 3; Student Council 3; Business Manager "Revonah" 3; Science Club 1, 2, 3.

MARGARET ARNOLD

Φ M

Elkhart, Ind.

ROBERT BARNES

B Θ II

Winchester, Ind.

Freshman Class President; French Club 2; "Triangle" 2; Freshman Debates; Intramurals; "Revonah" Staff 2.

MARGUERITE BRUMBAUGH

A Δ II

Y. W. C. A. 1, 2, 3; W. A. A. 1, 2; Panhellenic Council 1, 2, 3; Secretary of Junior Class.

ROLAND MILLER

B Θ II

Plymouth, Ind.

CATHERINE CARR

Φ M

Madison, Ind.

Y. W. C. A.; Educational Club.

WILLIAM HARGRAVE

Φ Γ Δ

Newburgh, Ind.

Football 1, 2, 3; Basketball 1, 2, 3; Baseball 1, 3; Intramurals 1, 2, 3; Y. M. C. A. 1, 2, 3; Science Club 1, 2, 3.

BETTY HENNINGER

Φ M

Connersville, Ind.



# OF 1937

FLORENCE HEISEL  
Φ M  
Elkhart, Ind.

HORACE HOOTEN  
Φ Γ Δ  
Cincinnati, Ohio

Dramatic Club 2, 3; Junior Class Treasurer; Intramural Debates 2; Intramural Sports 1, 2, 3; "Triangle" Staff 2; German Club 2.

JOSEPH L. MOORE  
B Θ II  
Huntington, Ind.

German Club 1, 2, 3; Science Club 1, 2, 3; Intramurals 1, 2, 3; Freshman Debates.

NELSON McINTOSH  
Φ Γ Δ  
Paoli, Ind.

Mississippi College 1, 2; Football 3; Baseball 3; Intramurals 3; Y. M. C. A. 3.

WINNIFRED SANDERS  
Φ M  
Warsaw, Ind.

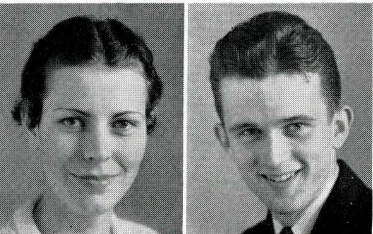
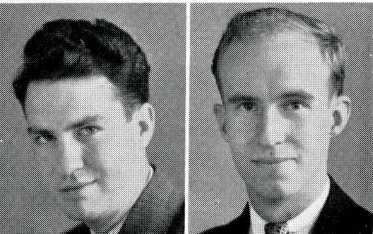
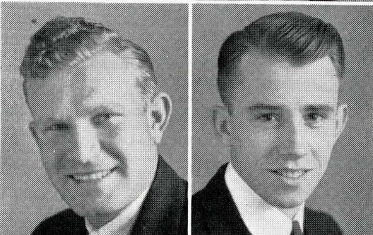
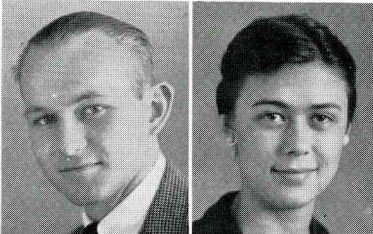
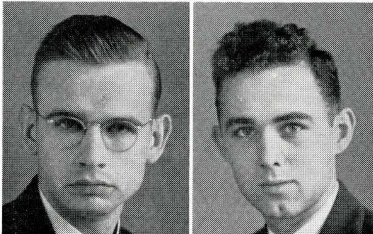
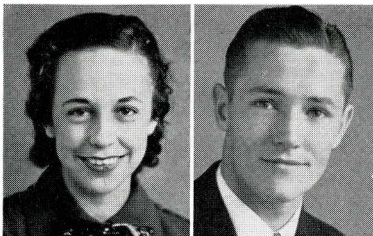
W. A. A. 1; Y. W. C. A. 1, 2, 3; Student Council 3; Women's Student Government 3; German Club 1, 2; Science Club 1; Treasurer Student Council 3; Assembly Committee 3.

JOHN ROBB  
B Θ II

Alexandria, Penn.

Baseball 1, 2, 3; Intramurals 1, 2, 3; Varsity "H" Club 2, 3; Science Club 3; Interfraternity Basketball 2, 3; Choir 3.

SARAH M. SANDERS  
Φ M  
Newcastle, Ind.



EARL VANCE  
Φ Γ Δ  
Valeene, Ind.

Varsity Football 1, 2, 3; Intramural Sports 1, 2, 3; Interfraternity Council 3; Varsity "H" Club 1, 2, 3.

JACK DEWITT  
B Θ II  
Newcastle, Ind.

MARJORIE MITCHELL  
Δ Δ II  
Thorntown, Ind.

Y. W. C. A. 1, 2, 3; Choir 1, 2, 3; W. A. A. 1, 2, 3; W. A. A. Board 3; "Triangle" Staff 3.

JACK W. HANNAH  
B Θ II  
Rising Sun, Ind.

Varsity Track 1, 2, 3; Science Club 3; French Club 1, 2; Band 1; Intramurals 1, 2, 3.

PETER KREISKY  
Φ Δ Θ  
Westville, Ill.

FRED WARD  
Φ Γ Δ  
Warsaw, Ind.

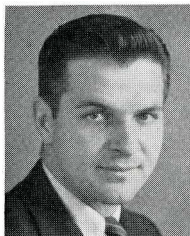
Interfraternity Council 3; Alpha Phi Gamma 3; Editor-in-Chief of "Revonah" 3; Choir 1; German Club 2; Sphinx Club 3; "Triangle" Reporter 1; Intramurals 1, 2, 3; Intramural Debates 2, 3; Interfraternity Basketball 3.

BEN ANDY HUDDLESON  
B Θ II  
Paoli, Ind.

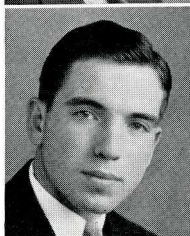


# JUNIORS

FLOYD STILLHAMMER  
Hanover, Ind.



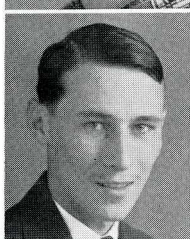
GLEN STANNER  
Θ K Ν  
Howe, Ind.



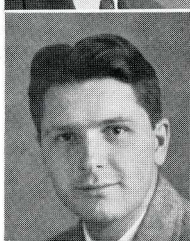
KATHERINE HOLEM  
Φ M  
South Bend, Ind.



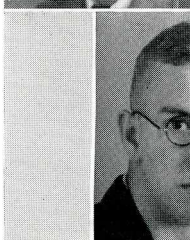
CHARLES JUDKINS  
Hanover, Ind.



HAROLD KOMP  
Σ X  
Pleasant Lake, Ind.  
German Club 1, 2; Science Club  
2, 3; Choir 1, 2, 3; Band 2, 3.



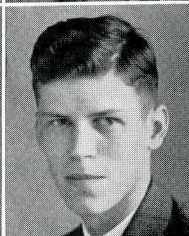
ROBERT MOFFETT  
Madison, Ind.  
Science Club 1, 2, 3; Band 1, 2,  
3; Gamma Sigma Pi 2, 3.



ROSE M. SCHNELL  
Madison, Ind.

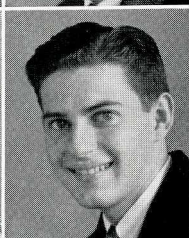


EDMOND BOTTORFF  
Σ X  
Columbus, Ind.



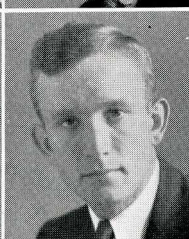
Science Club 1, 2, 3; Vice-  
President 2, President 3; Ger-  
man Club 1, 2; Gamma Sigma  
Pi 2, 3; Vice-President 3; Ass't.  
Varsity Basketball Manager 3.

DOUGLAS DOUGLAS  
Σ X  
Charleston, W. Va.

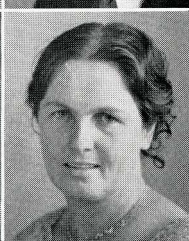


Y. M. C. A. Cabinet 1, 2, 3;  
Dramatic Club 2, 3; Choir 1, 2;  
Secretary-Treasurer 3; "Triangle"  
Staff 2, 3; German Club 1, 2;  
Religious Vocations Club 2; Vice-  
President 3.

ROBERT MILLICAN  
Madison, Ind.



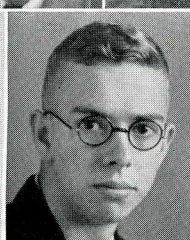
SARAH E. HENNING  
Madison, Ind.



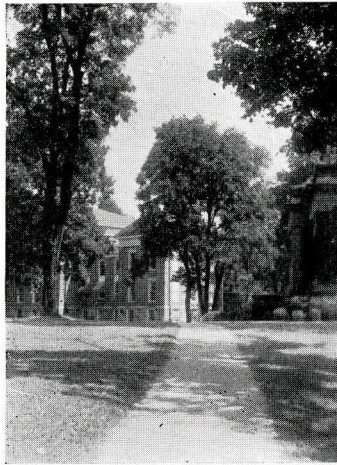
KENNETH G. BOLING  
Φ Δ Θ

Tusculum College 1; Franklin  
College 2, 3; Science Club 1, 2,  
3; Y. M. C. A. 1, 3.

(Not pictured)



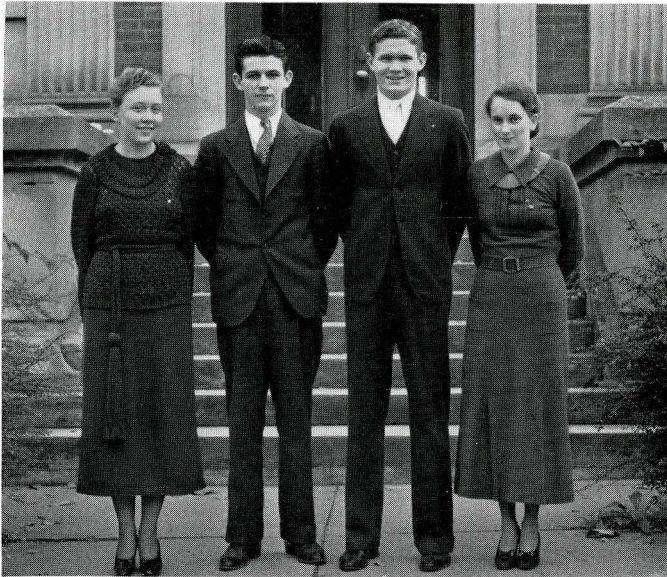




The walk to Classic Hall, which leads every student to his classes.



# SOPHOMORES



SMITH  
HALL  
GARRETSON  
HOHAM

The Sophomores, having passed through their period of servitude as Freshmen, have made an entrance into the full swing of college life, and even though they are some distance from the "cap and gown wearing stage", they are at least well started.

The Sophomore Class is usually the largest of the four, and is able to accomplish much by sheer force of numbers.

The Class of '38 has representatives in most lines of activities even this early in its career, which makes its future look even more promising. Next year the "38ers" will step into much greater esteem, and more responsibility, for which the Junior and Senior Classes have tried hard to prepare them.



# CLASS OF 1938

Left to right, Bottom Row: Holem, McKee, Shaddy, Hoham, Weymouth, Brown, Hughes, Leffler, Meyers.

Second Row: Hall, LaRue, Sayles, McIver, Jacques, Wildman, Scott, Wilkinson, E. McIver, Moffett,

Third Row: Harft, Finch, Aspinall, **Howard**, Hunter DeJean, Smith, Grimm.

Fourth Row: Smith, Wattles, Shelby, Sholz, Barnette, Shaffer, Selke.

Fifth Row: Hartley, Kibler, Ballew, Alexander, Hargrave, Chambers, Berg, Ambrose.

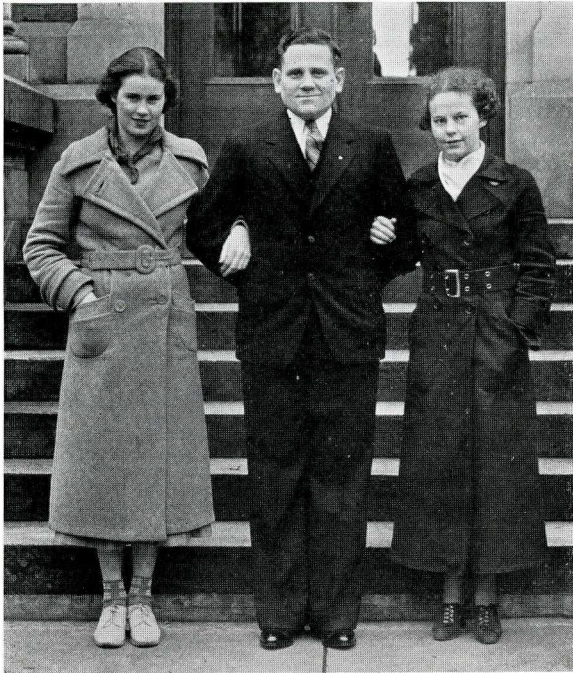
Sixth Row: Cassidy, King, Huber, Lodge, Johnson, Garretson, Bozue.

Top Row: Freshour, Gregas, Teeter, Hannah, Whittacre, T. Moore.





# FRESHMEN



LIGHT  
TANCL  
BOLES

"The first time is always the hardest", and so with the Freshmen and their first year. At the bottom as far as rank is concerned, the freshman faces an entirely new environment; a stranger in a strange land, he is looked down on by the upperclassmen, who put him through a rigid discipline of tradition, to enable him to face better the coming years.

The "39ers" have received their lessons in the proper spirit, and have formed many lasting friendships; they have learned to study, to work, to adapt themselves to conditions, and to cooperate. No longer are they outsiders; they are a vital part of the college organization.

A class as large and as accomplished as this should be quite able to take over the student leadership when the time comes. They have passed the test. Congratulations!



# CLASS OF 1939

Top Picture; left to right, first row:  
Hannah, Hilt, Scott, Meng, Turner,  
Dawson, Baer, Rogers, Nighbert,  
Poulton, Vance.

Second Row: McDaniel, Thomas, Her-  
rin, Harrell, Sommers, Pruss, Bod-  
man, Carr, Swinney, Trapp, Chaille,  
French.

Third Row: Schrom, McKesson, Eber-  
sole, Porter, Jones, Purdy, Moreland,  
Breeding, Black, Porter, Briscoe.

Fourth Row: Padgett, Brand, Lyman,  
Banta, Schaub, Weininger, Perkins,  
Shepard, Baker, Bum, Montgomerie.

Fifth Row: Turner, Kraft, Raines,  
Bain, Thompson, Zink, Anderson,  
Parrish, Nickleson.

Lower Picture, first row: Aspinall,  
Light, Robinson, Beck, Williams,  
Chalker, Hupp, Johnson, Lawrence,  
Boles, Schrader, Bunch, Flint.

Second Row: Miller, Kelley, Densford,  
Goodwell, Laue, Crim, Craig, J.  
Campbell, Bauerman, Bennett,  
Drake.

Third Row: Rankin, Nau, Tancl,  
Whaley, M. Parker, Blessing, Cut-  
ter, Gray, Dejean, Ewing, Douty.

Fourth Row: Kozak, Sebella, Parker,  
Simpson, Minick, Rawlings, Dean, R.  
Campbell, Carvin, Baker, Bundy.

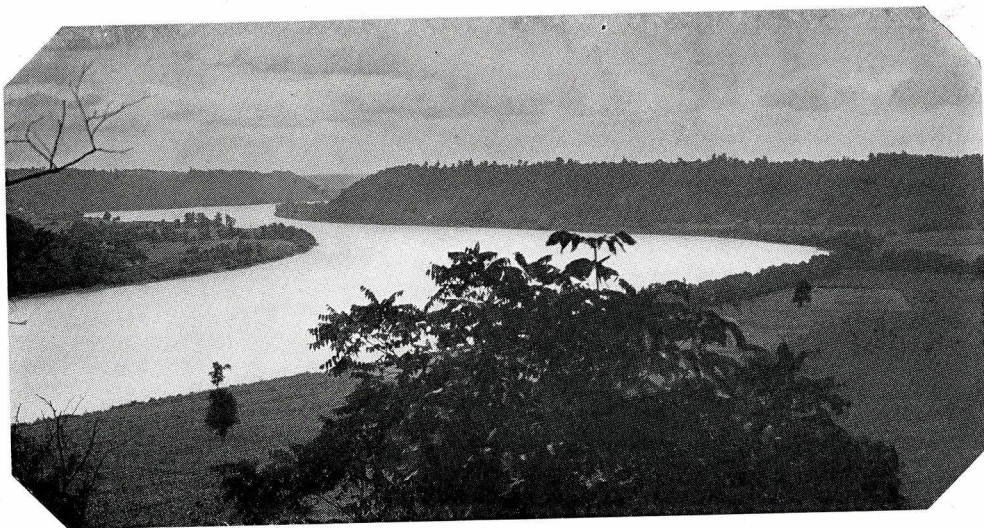
Fifth Row: Gear, McKeand, Kyle,  
Hathaway, Barymore, W. Smith,  
Harris, E. Smith, Mount, Brandon,  
Hughes.







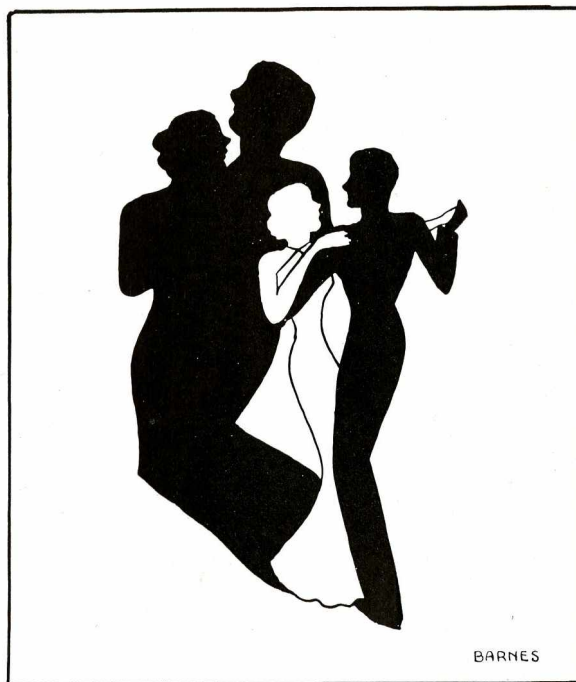
The "Three Trees" in Dr. Parker's yard, which greet the student every morning, on his way to classes. Through them can be seen the curves of the Ohio.



The curves of the Ohio, a common sight to students of Hanover, is unique, and is often marveled at by visitors.



# ACTIVITIES





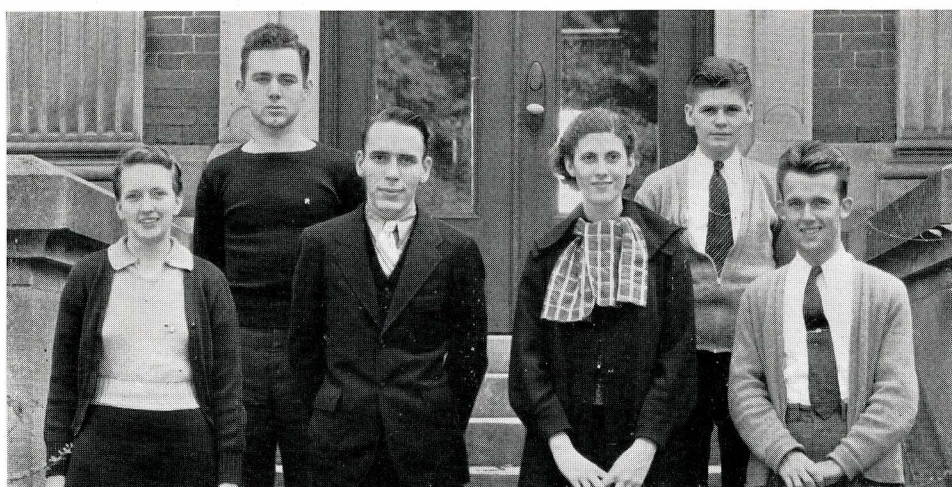




# STUDENT COUNCIL

This group of representatives is the link between the student body and the faculty. Each independent organization, fraternity, and sorority is equally represented in the council, and Dr. Kutz acts as its faculty advisor.

A compact group such as this can very easily convey student opinion, and effect changes, when necessary, for the advancement of better conditions.





# "TRIANGLE"

WELCOME

## THE TRIANGLE

FRESHMEN!

VOLUME 28
HANOVER COLLEGE, HANOVER, SEPTEMBER 26, 1935
NUMBER 1

### STUDENTS ELECT CLASS OFFICERS

#### Freshmen Win Over Sophomores

#### RHINES CAPTURE AFTER SHORT,

KYLE BRINGS DOWN SOPH FLAG FOR VICTORY

About ten minutes of vigorous hitting was all the time fifty freshmen required to subdue some forty sophomores in the annual Freshmen-Sophomore scrap, held Thursday afternoon on the polo field. Fighting under new rules both groups of men were wedged & wrestled about fifty feet from the flagpole. Fifteen feet up the pole sat the sophomore flag, and all fifteen feet heavily crossed. When the signal was given, both groups rushed to the flagpole, the sophomores trying to protect their flag, the freshmen striving to tear it down. Both sides had plenty of overactive loquacious on hand to pet their opponents. Thoughtful rhinoceroses had brought along bulky sacks to wipe the grease from the pole. After a few minutes of rough and tumble struggling, the freshmen had the battle well in hand. Keeping the sophs away from the



#### College Enrollment Takes Slight Drop

122 FRESHMEN REGISTER, 193 UPPERCLASSMEN RETURN

The tentative registration report given out Wednesday by Professor Ned Guthrie shows a slight enrollment of 315. This number compares favorably with that of previous years.

In the freshman group of 122, ninety-three have registered for regular college work, twenty-eight for teacher training studies, and one for special work. One hundred and ninety-three people have enrolled in the upper classes. Five of these are special students.

Professor Guthrie, who directs registration, and members of the college office staff, are working out further information concerning the student body and statistics will be ready for print next week.



#### Organized Students Sweep All Offices In Class Elections

HOLSAFFLE MARSHALL MARTIN CHOSEN FOR SENIOR OFFICERS

Vincent R. Gunther, prominent figure on Hanover's campus for the past four years, yesterday was accorded one of the highest honors attainable during one's collegiate career when his classmates voted him president of the Class of '36.

Gunther has four years of varsity football at Hanover to his credit. Last year he was chosen as center on a prominent all-state eleven. He was an important cog in the varsity track team for three years. He has served on the Interfraternity Council four years. Last year at Bloomington he was elected president of the State Interfraternity Council. Gunther has taken an active part in intercollegiate sports during his four years on the campus. He

#### FERA Project Will Be Tried

The "Triangle" is the means by which Hanover gives its journalism students a great deal of practical experience in their line of work—reporting, editing, proof-reading, advertising. It is affiliated with the Associated Collegiate Press, and bears news of many other colleges and universities.

Miss Mary Louise Fitton, head of the Department of Journalism, serves in the capacity of faculty advisor on the publication's staff, and her efforts deserve a great amount of praise. Burkert Friedersdorf and Charles McHarry edit the "Triangle" and manage the business, while numerous other students in the journalism classes bear the remaining burdens.



# TRIANGLE STAFF

Bottom Row, Left to Right:

Margaret Scott -----Reporter  
 Betty Henninger -----Columnist  
 Mary Ruth Palmer -----Associate Ed.  
 Miss Fitton -----Faculty Advisor  
 Marjorie Mitchell -----Women's Sports Ed.  
 Mildred Holsapple -----Associate Ed.  
 Maxine Kauffman -----Reporter

Second Row:

Ben Huddleson -----Reporter  
 Mary Wattles -----Columnist  
 \*Ruth Howard -----Columnist  
 Chas. Cassidy -----Sports Editor  
 Phil Allison -----Advertising Manager

Top Row:

John Ambrose -----Reporter  
 Frank Hartley -----Asst. Sports Editor  
 John Grimm -----Reporter

\* Deceased.

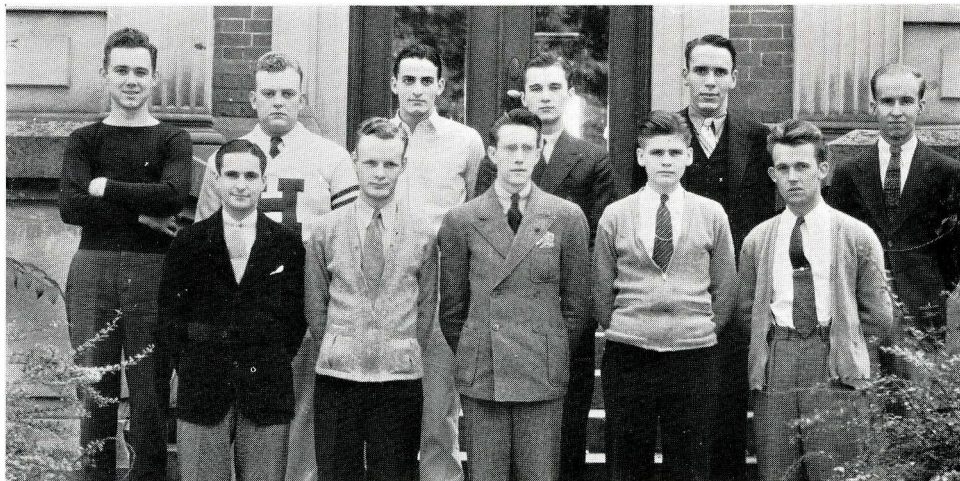




# SPHYNX CLUB

Sphinx Club members might well be termed the "Stirer Uppers" on the Hanover Campus. They are active in injecting student spirit into lax students, giving dances, and performing many other functions which are so necessary to give a full flavor to college life. This organization gives strong support to all student activities; it is composed of upperclassmen, who are also active in the fraternities of Hanover.

Goal post decorations, pep sessions, bonfires, and selections of yell leaders are taken by many as a matter of course, when the Sphinx Club deserves credit. A group such as this is necessary on a most every campus to see that things are done, and duties performed. Student life might, at times, be dull indeed without the Sphinx Club.



# VARSITY DEBATERS

Due to the untiring efforts of Prof. J. Jeffery Auer, new coach of forensics at Hanover, the debate season was a favorable one for the squad. Early in the season the squad went to Manchester College to enter the annual debate tournament, at which they debated the question: "Resolved, that Congress be allowed to override decisions of the Supreme Court on questions of constitutionality". This question was debated throughout the remainder of the season, which was taken up by debates with Purdue University, Chicago University, Capitol University, Centre College, Wabash College, Indiana Law School, Indiana University, Anderson College, Butler University, Indiana State Teachers' College, Manchester College. The Hanover team won a great share of their debates, and finished what might easily be called a successful season.

\* \*

David Hancock was winner of the Goodrich Oratorical Contest this year, and was later presented as Hanover's candidate in the State Oratorical Contest. Although he won from representatives from several larger schools, he was defeated in the finals of the contest. The subject of his speech was "War", and he deserves much credit for his work and able presentation.





# ALPHA PHI GAMMA

Students of journalism at Hanover are again fortunate in having a national journalistic fraternity on the campus—Rho of Alpha Phi Gamma. Qualifications for membership include outstanding achievements in the field of journalism.

Miss Fitton, head of the Department of Journalism of Hanover, and Dr. Fitzgibbon, another member of the faculty, and editor of the "Scroll" of Phi Delta Theta, are members of Rho Chapter. Burkert Friedersdorf is president.

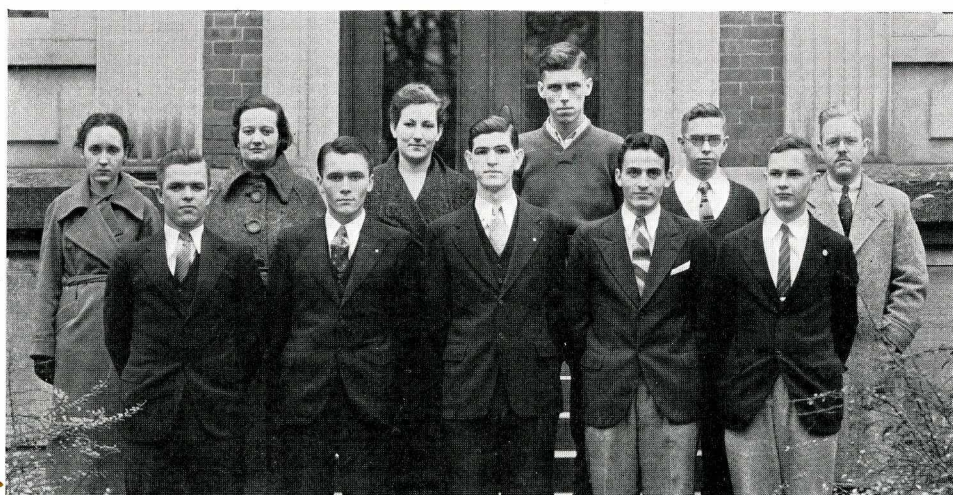
New members are received once each year; a banquet in honor of the "Triangle" and "Revonah" staffs is also held annually, to which some noted journalist is invited as guest speaker.



# GAMMA SIGMA PI

Membership in Gamma Sigma Pi requires a point average of 2.5 in two out of three semesters. Many of its members have made a consistent 3. average. This fraternity was organized in 1926 for the purpose of recognizing such scholastic brilliancy on the Hanover Campus.

Dr. Russell H. Fitzgibbon is faculty sponsor of the group.





# Y. W. C. A.

The Y. W. C. A. cabinet is responsible for the supervision of the Young Women's Christian Association at Hanover. This group, of which nearly every co-ed is an active member, performs regular, taken for granted duties that greatly widen the horizon of college activity.



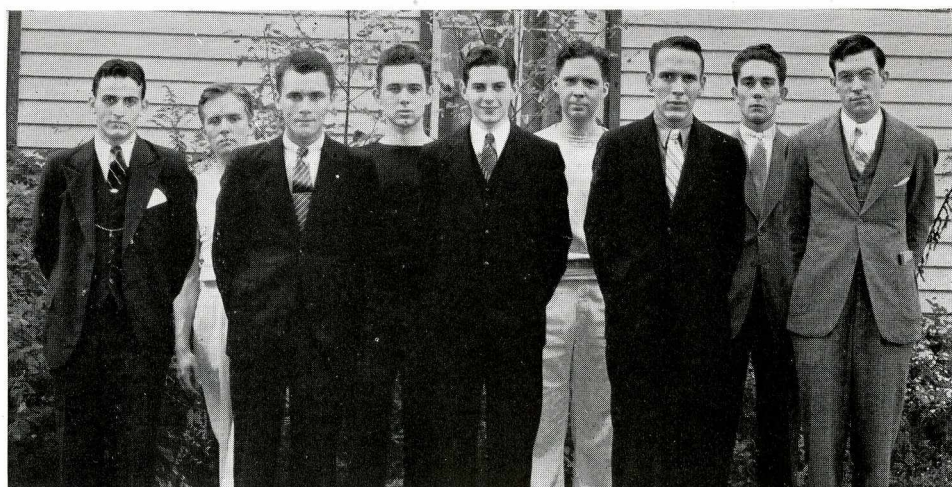
# Y. M. C. A.

## Y. M. C. A.

Hanover is fortunate in having a strong branch of the Young Men's Christian Association on its campus. Founded in 1870, the Hanover "Y" is one of the oldest in the United States, and has continued in its active character to the present time. The original building of the Y. M. C. A., built soon after the founding, is one of the historic spots on the campus.

## Y. M. C. A. CABINET

A group of well chosen young men, known as the cabinet, is responsible for the well being of this organization at Hanover. By sponsoring a regular Sunday night round table discussion meeting, the cabinet has done much to make the "Y" a vital part of every student's college life.





# COLLEGE CHOIR

The College Choir is one of the most active groups on the campus. They provide music for churchgoers every Sunday morning, but this is by no means the end of their services. They give programs in neighboring towns, broadcast annually from station WHAS in Louisville, and furnish numerous chapel programs. Professor Poland is their conductor, and under his guidance, the choir improves each year.

Since the number of the group must be restricted, membership is gained only after competitive tryout requirements have been met.



# SCIENCE CLUB

Students having the required ten hours of "B" in some department of science are eligible for membership in the Science Club. Under the leadership of professors in the various science courses, this organization furnishes instruction and entertainment to many students interested in any of the various fields of science.

The weekly meetings of the Science Club are conducted by different scientifically minded members of the faculty, and frequently leaders of scientific research are invited to address the group.





# FRENCH CLUB

The membership of the French Club is composed of members of the French classes of Hanover. The club is very active and holds its meetings twice each week.

This year the French students presented "La Maternelle", a French moving picture, at the Madison Theater. They hold an annual picnic at Hanover Beach. Marian Marshall is president.



# DRAMATIC CLUB

Members of the Dramatic Club are selected by judges after public auditions. The club presents on the average of four plays each year. The first semester's production was titled "Holiday"; "Three Taps at Twelve" was the second semester's presentation, and the members plan to give at least one more play before the end of school. Plays are given for student approval at the college gym. Martha Anne Hamblen is president, and Landon Gueutal is business manager. Prof. Auer is in charge of the group.





# TEACHER TRAINING SOPHOMORES

In June the members of this group will leave Hanover, fully qualified to serve in the capacity of teachers in any elementary school in the state. They have learned the modern methods of teaching, and are well equipped to pursue their vocation; they are fortunate in that they are able to start establishing themselves firmly in their life work after only two years of college. These sophomores have presented several interesting exhibits of their handiwork for student inspection, and, judging by them, Indiana's youth will be well taken care of.



# INDEPENDENT WOMEN

In 1933 the women without fraternity affiliations on the campus organized the Independent Women's Club, the activities of which somewhat resemble those of a sorority. Since its organization, the Club has provided ample social activity for its members. The Independent Women have provided several winning debate teams in the Freshman and Intramural Debates, and their teas and parties are not to be forgotten; they are truly a lively bunch.



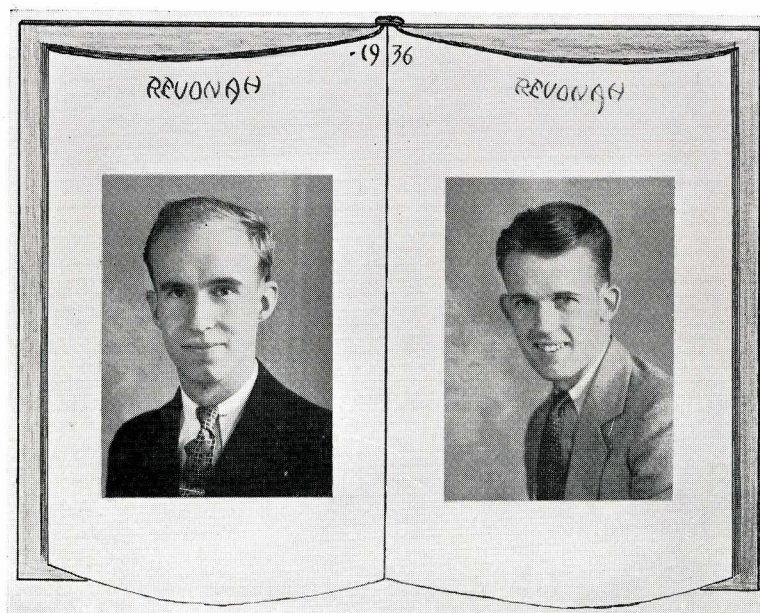


# “REVONAH”

The responsibility of managing and editing a college annual, though a ponderous task, gives the “Revonah” staff experience that they will find invaluable in later years.

The “Revonah” represents a year of planning, writing, picture taking, budgeting, and figuring that is not quite evident at the first glance at the book. The cover, the pictures, every little decoration means time spent in planning, yet the entire work is sometimes judged by the mere cover or number of pages.

The staff is chosen from a group of applicants by a student board of controls and a faculty group of advisors; soon after, contracts are let, and work is begun, a year's work, submitted for your approval.



FRED WARD, Editor  
ROBERT HORTON, Business Manager

# EDUCATIONAL CLUB

Membership in the Educational Club, under the supervision of Miss Marie Fisher, is open to students enrolled in the Normal school of the college. The club and its programs are helpful along the lines of giving the students a better understanding of their future work. Every member takes an active part in the program of the club, and meetings are held regularly.

Such an organization enables its members to work as a group as well as it aids their scholastic endeavors.



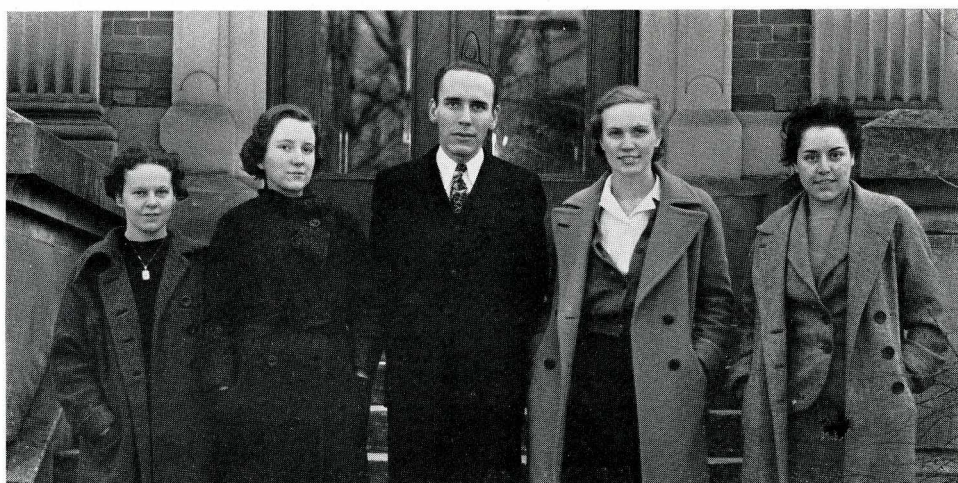


# FRESHMAN DEBATES

The Phi Mu freshman debate team, by defeating the Independent Women's team in the finals, won the Freshman Debate Trophy this year. The winners were coached by Donald Medcalf, of the Varsity Debate team, and their skill in the debates was quite worthy of the award.

## INTRAMURAL DEBATES

To date the intramural debate tourney has not been completed. Last year the cup was won by Phi Gamma Delta, and this year, the Phi Gam's will debate in the finals (having defeated the Sigma Chi team) with either the Beta's or Theta Kappa Nu's.



# GREEKS










# FRATERNITIES

Many persons consider fraternities a vital part of college life because they play a great part in moulding character. To quote one author, "Studies aren't everything". There are certain influences and contacts outside the curriculum of a college that serve quite as well to broaden one's views, and fraternity life is one of these. Within a fraternity one forms lasting friendships and gains experiences which become lifelong remembrances. A fraternity is a business enterprise, a club, a group of friends, and much more to every member, giving him a certain training and responsibility that nothing else can; it gives him something to support, to struggle for, to cherish, to live up to.

Moreover, a group of fraternities liven up a campus with their intramural sports, dances, parties and traditions; they are organized—they get things done.

"The forces that have been greatest in my life have been God and the college fraternity that moulded me."

—Former Vice-President  
Thomas R. Marshall,  
Phi Gamma Delta.

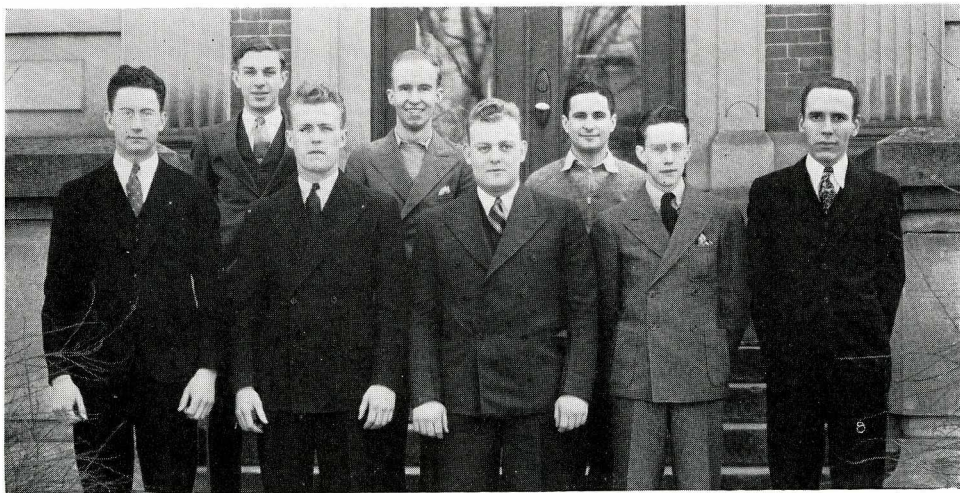




# INTERFRATERNITY COUNCIL

The Interfraternity Council, composed of three members from each of the four national fraternity chapters on the Hanover Campus, exists for the purpose of fostering better relations between these fraternities. The Council is a powerful organization, since it represents the entire fraternity membership.

Twice each year these fraternities unite to give a dance, which the council members supervise. Requirements for fraternity initiation and many other important fraternity matters are governed by this body. Burkert Friedersdorf, of Beta Theta Pi, is president.



Top Row: Chambers, Ward, Gueutal

Bottom Row: Denton, Grossnickle, Guenther, Friedersdorf, Metcalf

# PAN-HELLENIC COUNCIL

The purpose and functions of the Pan-hellenic Council are similar to those of the Interfraternity Council; the picked representatives from each sorority act as a governing body concerning these sororities. They promote good will and better understanding wherever fraternal problems are concerned.



Weymouth

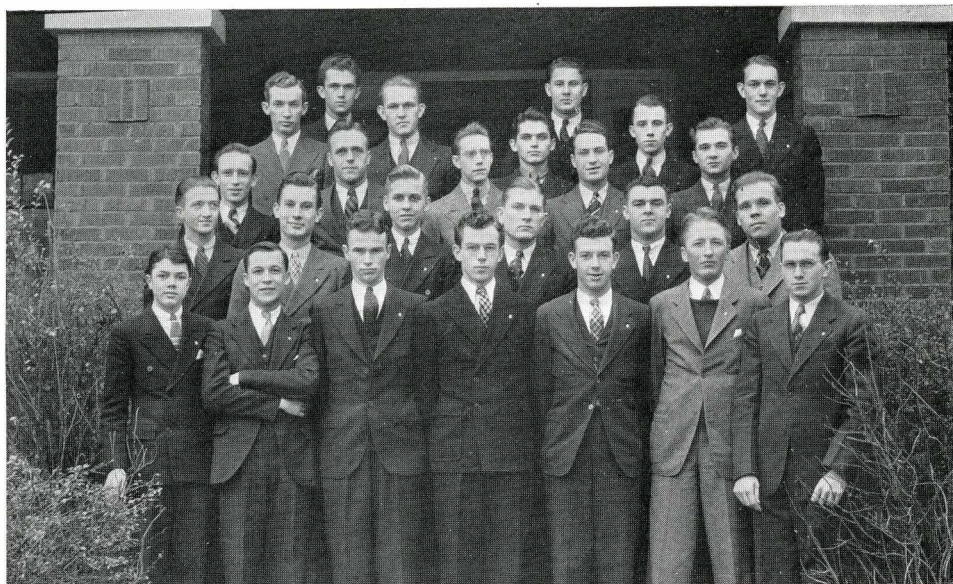
Heisel

Marshall

Shacklette

Brumbaugh





## BETA THETA PI

Iota Chapter of Beta Theta Pi was established on the Hanover Campus in 1853, the first Greek letter fraternity here. During its eighty-three years of existence it has climbed steadily in strength, producing outstanding men in many types of activity.

This fraternity is a member of the Miami Triad, composed of Phi Delta Theta, Sigma Chi, and Beta Theta Pi, and was organized in 1839. It ranks high among the national fraternities.

The colors of the Betas are pink and blue, and their flower is the American Beauty rose.

# IOTA OF BETA THETA PI

BURKERT FRIEDERSDORF  
RAYMOND HINDS  
PAUL MARTIN  
JOHN YOUNG  
ARTHUR WHALLON

## SENIORS

Salem, Ind.  
Madison, Ind.  
Santa Claus, Ind.  
Hanover, Ind.  
Richmond, Ind.

JOE MOORE  
BEN HUDDLESON  
JACK HANNAH  
ROBERT BARNES  
ROLAND MILLER  
JOHN ROBB

## JUNIORS

Huntington, Ind.  
Paoli, Ind.  
Rising Sun, Ind.  
Winchester, Ind.  
Plymouth, Ind.  
Alexandria, Pa.

TOM MOORE  
ALBERT SPANDEAU  
LEE HARGRAVE  
ROBERT SAYLES

## SOPHOMORES

Huntington, Ind.  
Fowler, Ind.  
New Albany, Ind.  
Huntington, Ind.

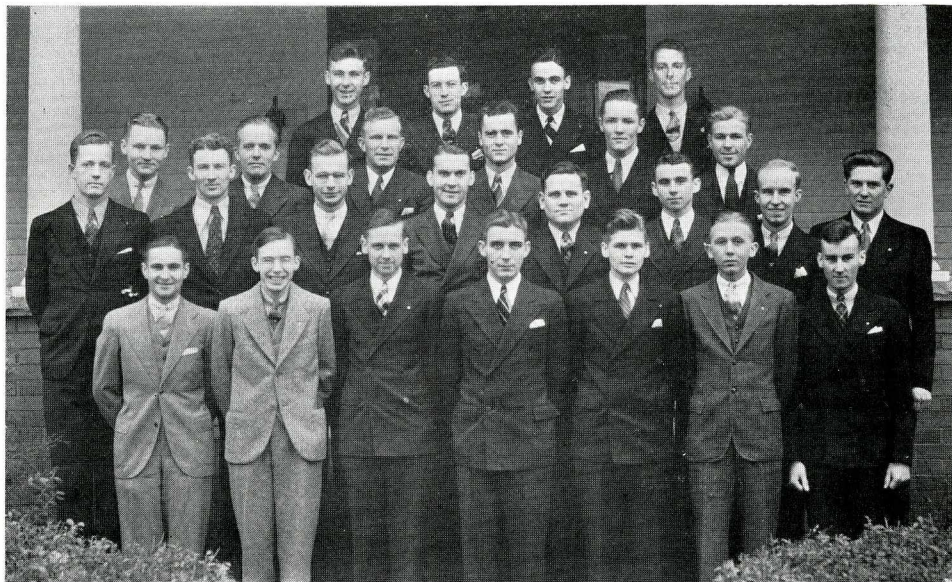
ROBERT ZINK  
FRED NEIGREN  
LYLE THOMPSON  
HERBERT BARBER  
JOHN FRENCH  
RICHARD RAWLINGS  
ROBERT MONTGOMERY  
HARRY ANDERSON  
WILLIAM VANCE

## FRESHMEN

Salem, Ind.  
Kokomo, Ind.  
Newcastle, Ind.  
Martinsville, Ind.  
Newcastle, Ind.  
Monticello, Ind.  
South Bend, Ind.  
Fowler, Ind.  
Greenville, Ohio







## PHI GAMMA DELTA

Phi Gamma Delta and Phi Kappa Psi, organized in 1848, were known as the Jefferson Duo. Tau Chapter of Phi Gamma Delta, the second fraternity to come to Hanover, was organized on this campus in 1864. Tau Chapter has representatives in almost any phase of scholastic activity, and has produced many outstanding men. It is a strong national fraternity, and has retained its strength through the years.

The Fiji color is royal purple, and the flower is the purple clematis. Dr. H. W. Burger, the Hanover registrar, is the Purple Legionnaire of this chapter.

# TAU OF PHI GAMMA DELTA

WILLIAM ELLIS  
WOODROW FLEMING  
LANGDON GUEUTAL  
CARL HAMMOND  
MAX HEALEY  
CHARLES HUTCHINGS  
ROBERT THOMAS  
CLIFFORD MURPHY

## SENIORS

French Lick, Ind.  
Milan, Ind.  
Indianapolis, Ind.  
Danville, Ohio  
Indianapolis, Ind.  
Indianapolis, Ind.  
Cincinnati, Ohio  
Scottsburg, Ind.

PHILIP ALLISON  
WILLIAM HARGRAVE  
HORACE HOOTEN  
FRED LOGAN  
WALLACE McDONALD  
NELSON McINTOSH  
ROGER SANDERS  
EARL VANCE  
FRED WARD

## JUNIORS

Gardner, Ill.  
Newburg, Ind.  
Cincinnati, Ohio  
Plymouth, Ind.  
Indianapolis, Ind.  
Paoli, Ind.  
Warsaw, Ind.  
Paoli, Ind.  
Warsaw, Ind.

ARTHUR BOZUE  
JULES HERITIER  
FREEMAN GIBBS

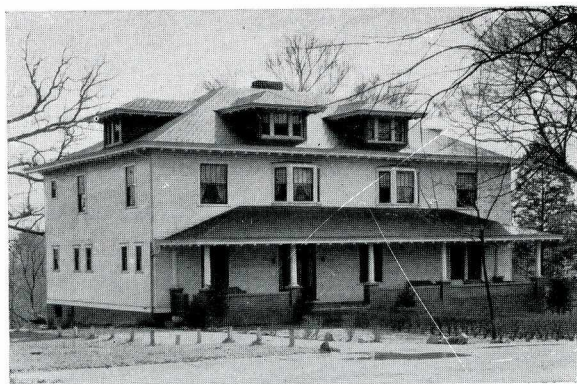
## SOPHOMORES

Gardner, Ill.  
Columbia City, Ind.  
Indianapolis, Ind.

KENNETH GOODWELL  
GILBERT LAUE  
FRED DENSFORD  
JOHN CRIM  
FRANK WHALEY  
ROBERT NAU  
RUSSELL FERRELL  
LANIER McKEAND  
WILLIAM NICHOLSON  
CLAUDE V. DRAKE  
JAMES RANKIN

## FRESHMEN

Plymouth, Ind.  
Gary, Ind.  
Scottsburg, Ind.  
Hanover, Ind.  
Flossmoor, Ill.  
Columbus, Ind.  
Flossmoor, Ill.  
Hanover, Ind.  
Rochester, Ind.  
Shelbyville, Ind.  
Hanover, Ind.







## PHI DELTA THETA

Indiana Epsilon of Phi Delta Theta, another member of the Miami Triad, came to Hanover in 1868, and has prospered ever since. Her members, are known, among other things, for their prominence in athletics. Dr. Russell H. Fitzgibbon, of the Hanover History Department, is an alumnus of this chapter, and is also editor of the "Scroll", the fraternity's national publication. Phi Delta Theta is a large fraternity, locally and nationally.

The Phi Delt colors are argent and azure, and the flower is the white carnation.

# INDIANA EPSILON OF PHI DELTA THETA

CHARLES McHARRY  
VINCENT CUENTHER  
WILLIAM MAKOWSKY  
RAY HURST  
ROBERT J. SMITH  
CHARLES CALLISON

## SENIORS

Madison, Ind.  
Jeffersonville, Ind.  
Sellersburg, Ind.  
Cleveland, Ohio  
South Bend, Ind.  
Lafayette, Ind.

ROBERT HENNING  
CHARLES POTTER  
ROBERT HORTON  
GEORGE GROSSNICKLE

## JUNIORS

Hanover, Ind.  
Madison, Ind.  
North Bend, Ohio  
Elkhart, Ind.

WILFORD HALL  
ROBERT WILKINSON  
DAN M. KING  
JOHN AMBROSE  
WARREN MOBERLY  
GAVIN LODGE  
FRANK HARTLEY  
B. W. WHITAKER  
EDWIN McIVER  
JOHN GRIMM

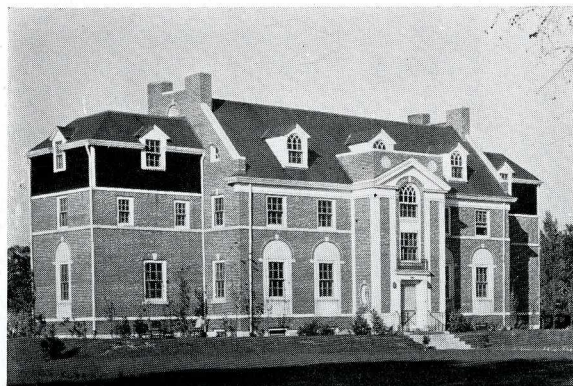
## SOPHOMORES

Rising Sun, Ind.  
Mitchell, Ind.  
Muncie, Ind.  
Westville, Ill.  
Shelbyville, Ind.  
Madison, Ind.  
Scottsburg, Ind.  
Frankfort, Ky.  
Jeffersonville, Ind.  
Jeffersonville, Ind.

CHARLES POTTEBAUM  
KENNETH KYLE  
SIDNEY BAKER  
FRED BLUM  
ROY WEININGER  
CHARLES HATHAWAY  
BENTON SCHAUB  
WILLIAM PERKINS  
RICHARD SHEPPARD

## FRESHMEN

Columbus, Ind.  
Hanover, Ind.  
Newcastle, Ind.  
Newcastle, Ind.  
Columbus, Ind.  
Columbus, Ind.  
Wilamette, Ill.  
North Bend, Ohio  
Cleveland, Ohio







## THETA KAPPA NU

Indiana Alpha of Theta Kappa Nu, on the Hanover Campus, was the first chapter of this fraternity to be established in Indiana. Although this chapter was not organized until 1924, it has ably kept pace with the other, older fraternities. Numerous Theta Nu members are outstanding in scholarship and athletics.

The Theta Nu colors are crimson, argent, and sable, and their flower is the white rose. The fraternity was founded at Drury College, in Kansas, in 1924, and there are forty-eight chapters in the national organization.

# INDIANA ALPHA OF THETA KAPPA NU

HAROLD DENTON  
ROBERT FOSTER  
DONALD MEDCALF  
RALPH SCHOOLCRAFT  
CECIL POE

MELVIN ELSTON  
GEORGE URGANG  
GLEN STANNER

LEE BAUGHMAN  
DEAN CHAMBERS  
FRANCES JOHNSON  
GEORGE FRUSHOUR  
WALTER STEWART  
CADMAN GARRETSON

JOHN CAMPBELL  
RICHARD CAMPBELL  
G. S. HARRIS

## SENIORS

Butlerville, Ind.  
Indianapolis, Ind.  
Dale, Ind.  
North Vernon, Ind.  
Corydon, Ind.

## JUNIORS

Canaan, Ind.  
Oak Park, Ill.  
Howe, Ind.

## SOPHOMORES

Seymour, Ind.  
Butlerville, Ind.  
Dupont, Ind.  
Lucerne, Ind.  
Garret, Ind.  
Monticello, Ind.

## FRESHMEN

Sacket Harbor, N. Y.  
Sacket Harbor, N. Y.  
Patriot, Ind.







## ALPHA DELTA PI

Alpha Delta Pi was founded at Wesleyan College in 1851, and Phi Chapter made its appearance on the Hanover Campus in 1913. Its members have distinguished themselves in all phases of Hanover life, and the chapter has grown steadily stronger.

Alpha Delta Pi's colors are blue and white, and her flower is the violet. Marguerite Brumbaugh is president of Phi Chapter.

# PHI OF ALPHA DELTA PI

GENEVA FURNISH  
POLLY GILL  
MARTHA ANNE HAMBLIN  
MILDRED HOLSAPPLE  
HELEN MERZ  
LUCILLE SHACKLETTE

MARGUERITE BRUMBAUGH  
MARY MARGARET DOWNS  
FRANCES GABEL  
NELLE MILHOLLAND  
MARJORIE MITCHELL  
ELIZABETH ROBERTSON  
VIRGINIA BROWN

ELIZABETH ASPINALL  
MARGARET DE JEAN  
ROBERTA FINCH  
GRETCHEN HOHAM  
VIVIAN HUNTER  
MAXINE KAUFFMAN  
**RUTH HOWARD**  
MARGARET McIVER  
MARCIA WEYMOUTH

PEG ASPINALL  
JANE GEAR  
JANE RONALD  
JEAN RONALD  
MARY BECK  
BETTY WILLIAMS  
MARTHA BUNCH  
ALICE McKESSON  
FRANCES CHAILLE  
CAROLINE DE JEAN  
CAROLINE SCOTT  
DOROTHY NEIGHBERT  
BARBARA GRAY  
MARY JANE LIGHT  
MARGARET FLORA  
ALICE ROBISON  
ALICE KRAFT  
HARRIET MENG  
KATHERINE BATT

## SENIORS

Henryville, Ind.  
New Albany, Ind.  
Winchester, Ind.  
Salem, Ind.  
Mt. Washington, Ohio  
Jeffersontown, Ky.

## JUNIORS

Browns town, Ind.  
Boneville, Ind.  
Hanover, Ind.  
Lawrenceburg, Ind.  
Thorntown, Ind.  
Madison, Ind.  
Franklin, Ind.

## SOPHOMORES

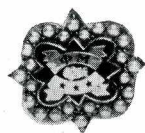
Hanover, Ind.  
Salem, Ind.  
Jeffersonville, Ind.  
Plymouth, Ind.  
Atlanta, Ind.  
Paoli, Ind.  
Jeffersonville, Ind.  
Jeffersonville, Ind.  
LaGrange, Ill.

## FRESHMEN

Hanover, Ind.  
Huntington, Ind.  
Portland, Ind.  
Portland, Ind.  
Columbia City, Ind.  
Southport, Ind.  
Newcastle, Ind.  
Plymouth, Ind.  
Butler ville, Ind.  
Philadelphia, Pa.  
Jeffersonville, Ind.  
Hanover, Ind.  
Lebanon, Ind.  
Otto, Ind.  
Logansport, Ind.  
Hamburg, N. Y.  
Lewisville, Ind.  
Ghent, Ky.  
Salem, Ind.







## PHI MU

Proving their constant advancement, the Phi Mu's built a cabin last year, which is a meeting place, a study hall, and a place to give dances and parties. The Phi Mu's are a popular group, and are seen 'most anywhere about the campus.

Like the Alpha Delta Pi chapter, Rho of Phi Mu was organized on the Hanover Campus in 1913, and was founded at the same college one year later than Alpha Delta Pi. The Phi Mu colors are rose and white, and the flower is the Enchantress carnation. Winnifred Sanders is president.

# RHO OF PHI MU

MARIAN MARSHALL  
JOSEPHINE TAGGERT  
MARYDEE SNYDER  
RUTH PERIN  
MONA BEERY  
KATHERINE HINES  
NORMA SIZELOVE  
LORENA RYMAN  
MARGARET SCOTT  
ROZELLE BECK

FLORENCE HEISEL  
CATHERINE CARR  
WINNIFRED SANDERS  
MARGARET ARNOLD  
KATHERINE HOLEM  
**JEAN BAKER**

GEORGIA ALEXANDER  
BERNICE SMITH  
MARY WATTLES  
EULA MERLE JACQUES  
VIRGINIA SCOTT

MIRIAM MORELAND  
ARLEEN BOLES  
MARGARET JOHNSON  
MARY LOU LAWRENCE  
FRANCES BREEDING  
CAROL SHRUM  
MARY LOU JONES  
KATHERINE PADGETT  
AMY CHALKER  
MILDRED HUPP  
DONNA BOONE  
MILDRED BURGESS

## SENIORS

LaPorte, Ind.  
Cambridge City, Ind.  
South Bend, Ind.  
Cincinnati, Ohio  
South Bend, Ind.  
Indianapolis, Ind.  
Mt. Healthy, Ohio  
Lewisville, Ind.  
Columbia City, Ind.  
North Vernon, Ind.

## JUNIORS

Elkhart, Ind.  
Madison, Ind.  
Warsaw, Ind.  
Elkhart, Ind.  
South Bend, Ind.  
Alexandria, Ind.

## SOPHOMORES

Salem, Ind.  
Corydon, Ind.  
Elkhart, Ind.  
Thorntown, Ind.  
Cleves, Ohio

## FRESHMEN

North Bend, Ohio  
Warsaw, Ind.  
Fowler, Ind.  
South Bend, Ind.  
Edinburg, Ind.  
Salem, Ind.  
Hammond, Ind.  
Butterville, Ind.  
Cincinnati, Ohio  
Newcastle, Ind.  
Warsaw, Ind.  
Boise, Idaho








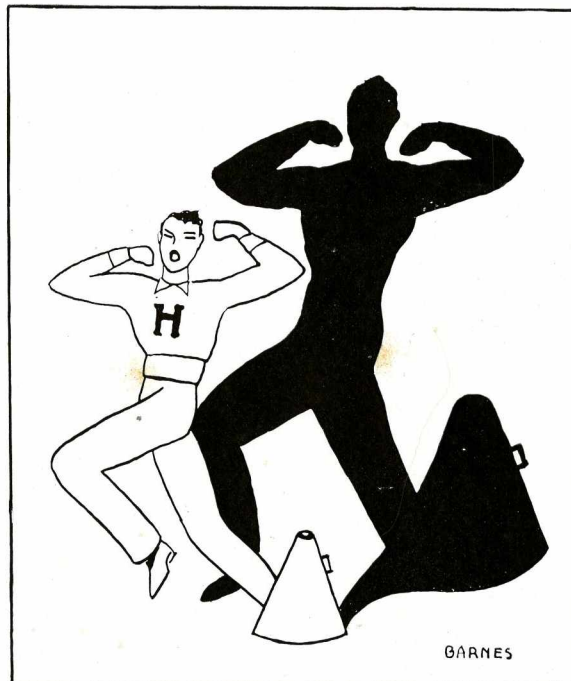
## SIGMA CHI

Chi chapter of Sigma Chi is to be re-established this year on the Hanover campus; twelve to fourteen men will be initiated near the end of school.

Sigma Chi is a member of the famous "Miami Triad", and was first organized on the campus in 1871. However, it was closed in the spring of 1917, and has remained so up to the present date. It will furnish the fifth major fraternity in Hanover. Many of its new members were formerly known as Alpha Delta Alpha's.

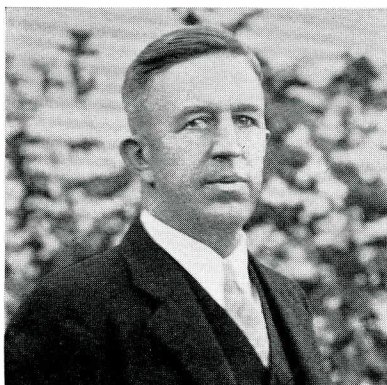


# ATHLETICS









Coach John M. Van Liew, known as "Van" to all Hanover students, has worked for four years at Hanover, building strong varsity teams to represent the school in competition with other colleges and universities. This year he was ably assisted by Gerald Hay, Hanover '35. Together, the two worked constantly, developing the experienced men and breaking in the new.

"Van" has had wide experience in the field of athletics, having, some years ago, coached the Peruvian Olympic teams for world-wide competition. He is firm, but is just one of the boys in everyday life, which is a part of the reason for his success.



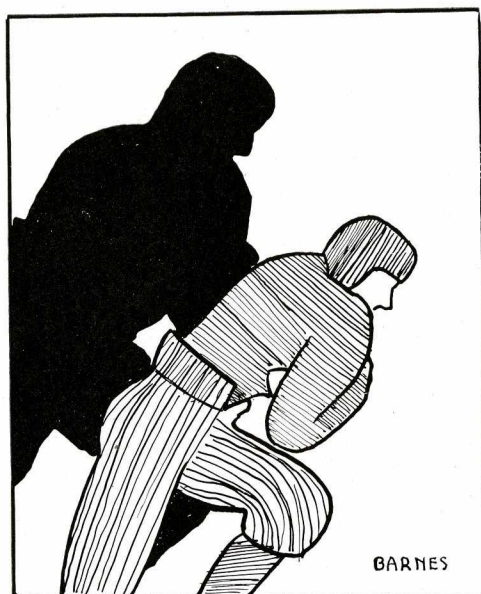
# VARSITY "H" CLUB

Varsity "H" membership is composed of lettermen in any of the various varsity sports on the Hanover Campus. Besides being a group of good fellows, the group sponsors various social activities on the campus.

The Varsity "H" Club was organized in 1927 by former Coach C. V. Money, and has continued its active existence ever since. Harold Denton is president of this strong organization.



**FOOT**

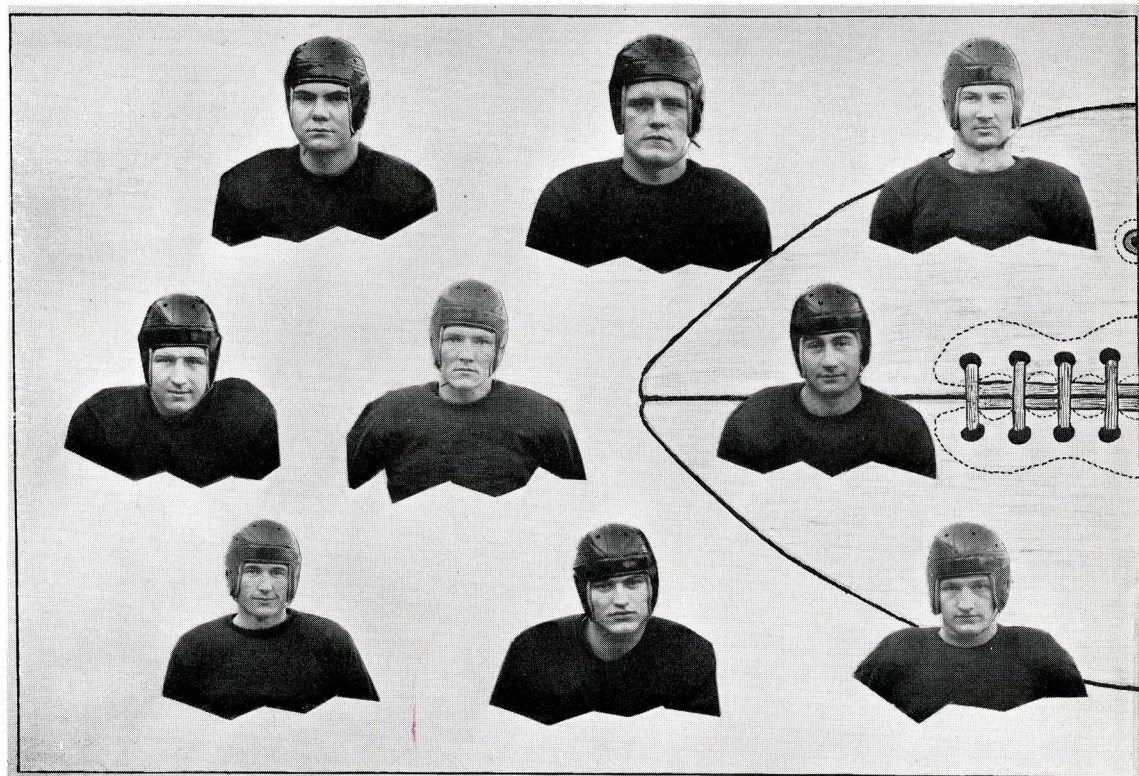


**B  
A  
L  
L**





# FOOTBALL

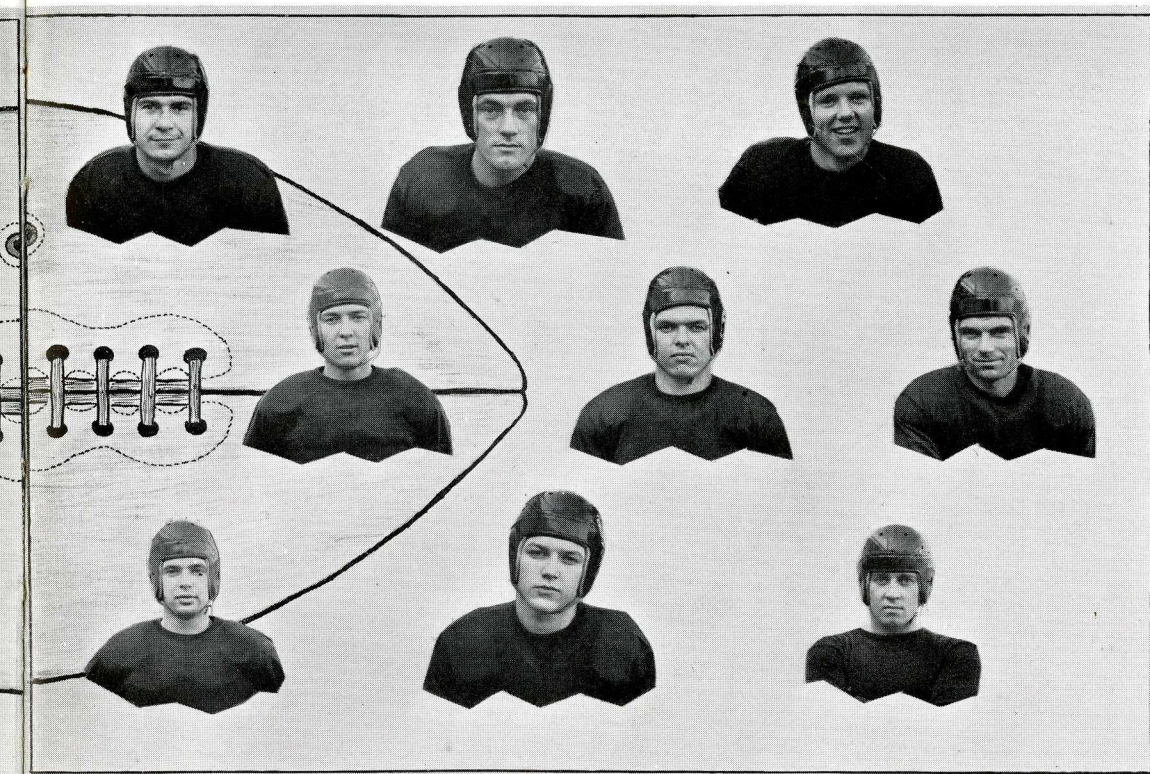


Brandon, Grossnickle, Hammond  
Wilkinson, Vance, Denton  
Stuckey, Pottebaum, Bain

The men who saw most action on the gridiron this year were: Hammond (Capt.) and Stuckey, ends; Poe and Vance, guards; Grossnickle, Denton, and Hillis, tackles; Bozue and Brandon at center; Parmater at quarterback; Wilkinson and Hassfurder, full-backs; and Makowski, Callison, Hurst, Hargrave, Pottebaum, Bain, and Krevisky in half-back positions.



# FOOTBALL



Krevisky, Hillis, Hargrave  
Makowski. Poe, Bozue  
Hurst, Callison, Parmater

The Panthers won from Evansville, Ball State, and tied Louisville, finishing with nearly a 50-50 record for the season. The team came up against some very strong competition, but played hard all the way through.

Denton, Stuckey, Poe, Hillis, Makowski, and Hammond will be absent in next year's lineup because of graduation.



# FOOTBALL

First ROW, Left to Right:

Parmater, Stuckey, Grossnickle, Poe,  
Bozue, Vance, Denton, Hammond,

Second Row:

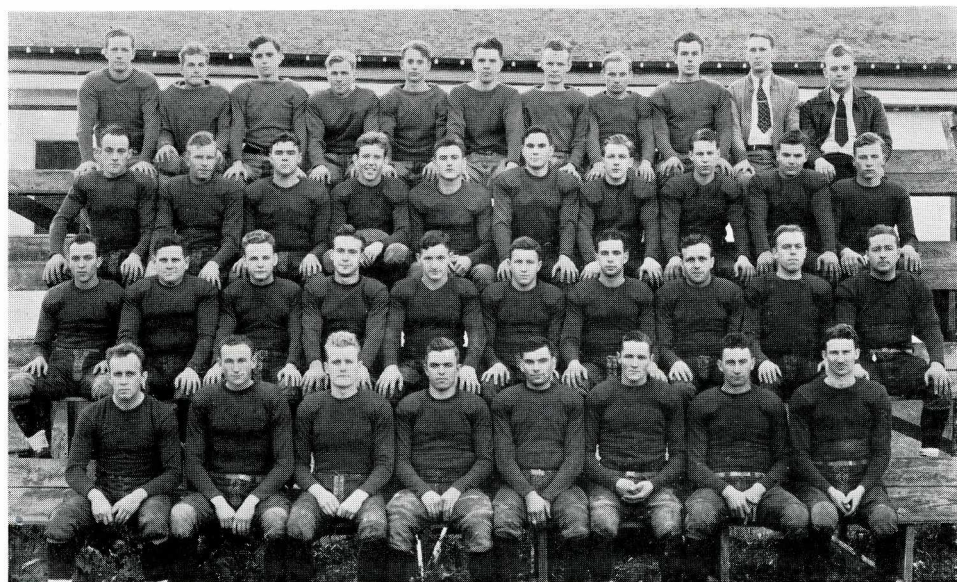
Makowski, Tancl, Selke, Krevisky, Bane,  
Wilkinson, Hurst, Hargrave, Urgang,  
Smith.

Third Row:

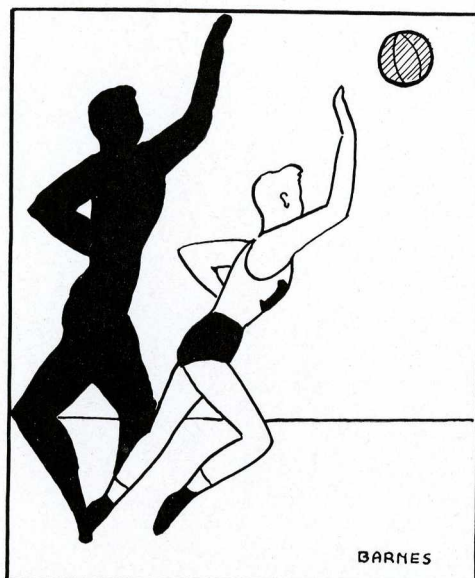
Hillis, McIntosh, Barber, W. Hargrave,  
Pottebaum, Brandon, Callison, Parrish,  
Foster, Ambrose.

Top Row:

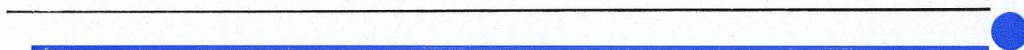
Fleming, Johnson, Perkins, Whaley,  
McKeand, Briscoe, Schoolcraft, Sebella,  
Vance, Baker, Guenther.



# BASKET

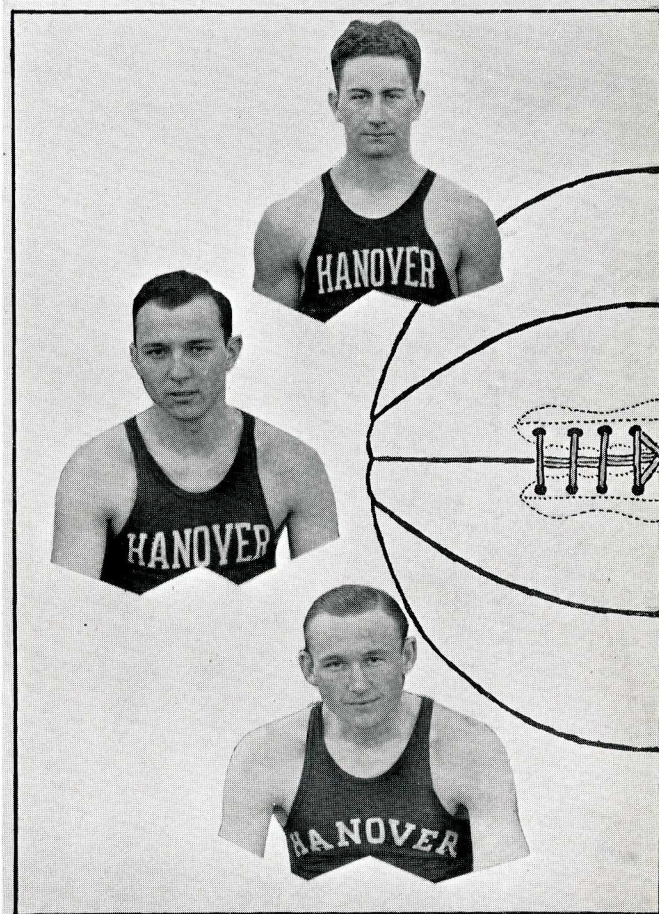


# BALL





# BASKETBALL



Denton  
Makowski  
Stuckey

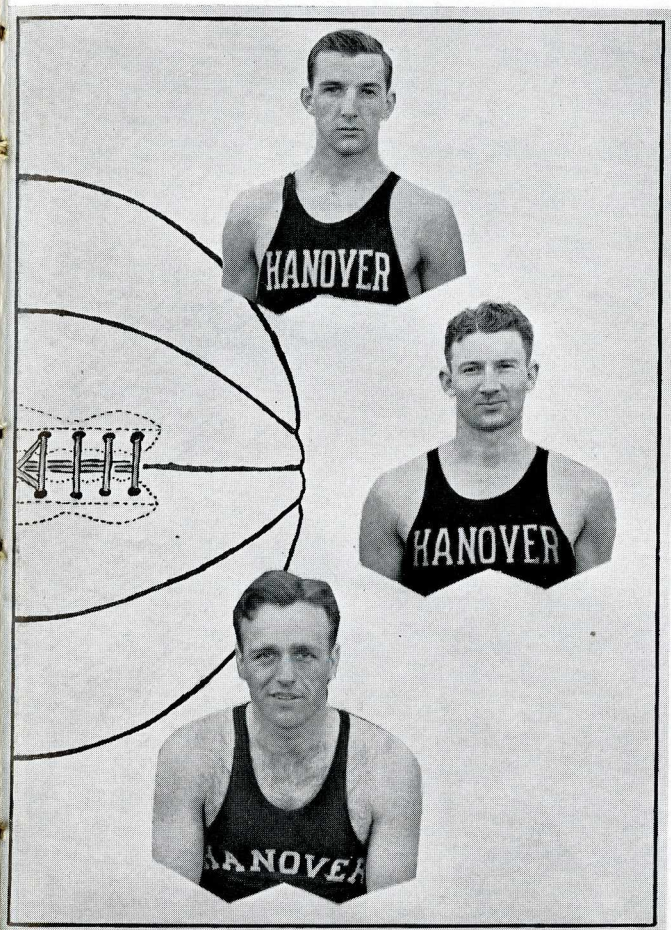
The varsity basketball team, like the football squad, suffered some unexpected defeats and gained some hard-fought victories. The regular team was composed of Denton, Makowski, Kibler, Hartley, Stuckey, and Hargrave, with Hammond and Briscoe seeing enough action to win letters in the sport.

The schedule for last season is as follows:

Dec. 19	Central Normal	_____here
20	Evansville	_____there
21	Oakland City	_____there



# BASKETBALL



Hartley  
Hammond  
Hargrave

Jan.	10	Central Normal	-----there
	11	Valparaiso	-----there
	17	Indiana Central	-----here
	18	Evansville	-----here
	31	Transylvania, Ky.	-----there
Feb.	1	Oakland City	-----here
	7	Franklin	-----there
	8	Joilet, Ill.,	-----here
	15	Indiana Central	-----there
	18	Franklin	-----here
	22	Valparaiso	-----here



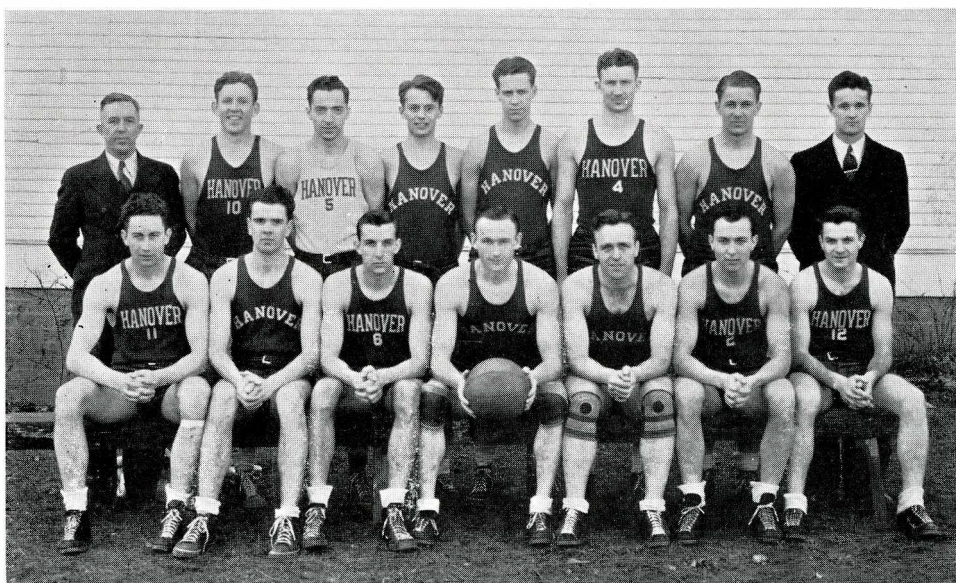
# BASKETBALL

First Row, Left to Right:

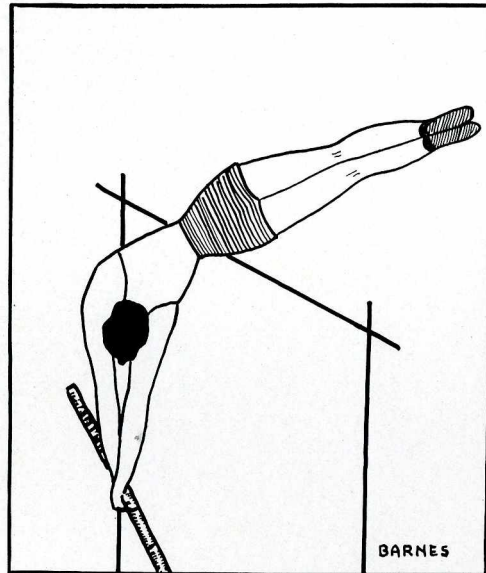
Denton, Briscoe, Hartley, Stuckey,  
Hargrave, Makowski, Stillhammer.

Second Row:

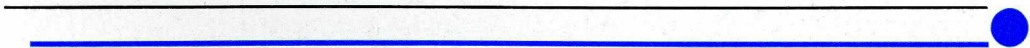
Coach Van Liew, W. Hargrave,  
Hatters'ee, McKeand, Parrish,  
Hammond, Spandean, Lee, manager.



**OTHER**



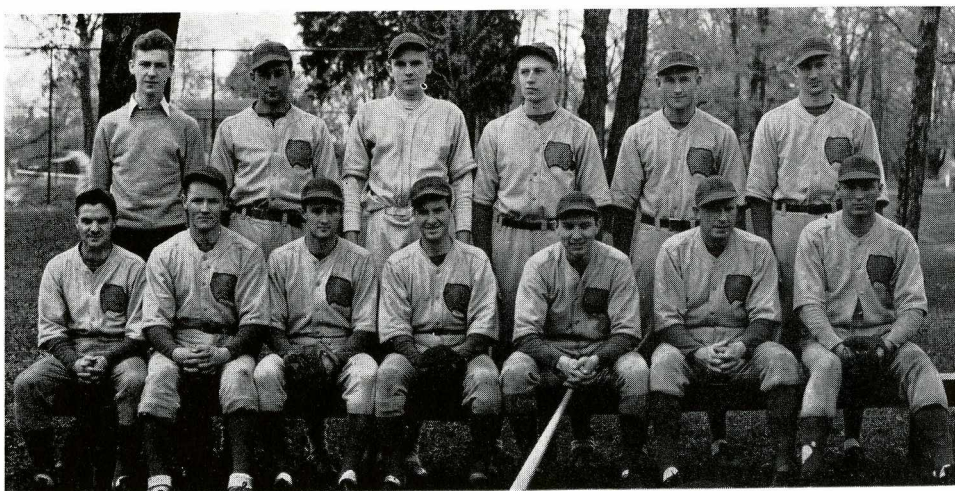
**S  
P  
O  
R  
T  
S**





# BASEBALL

Although the baseball squad has played only one game of its schedule to date, Hanover was victorious, and there are quite evident possibilities of a winning season. The players in their respective positions are: Stillhammer, catcher; Gregas, Stuckey, and Lee, pitchers; McIntosh and Greiner, first-base; Hammond (Capt.), second-base; Hassfurder, third-base; Robb, short-stop; Vance and Hillis, left field; Denton, right field; and Makowski, center field.



# TRACK

The track men started their season by winning their first meet, which was with Oakland City at Hanover. There are very few events in which the Hanover men are weak, and there are evidences of a great season for them.

Some of the outstanding men in their events are: Hannah, one mile run; Warn and Boone, two mile run; Young, McKeand, Hammond, Hargrave and Miller, sprints; Moore and Stewart, hurdles; Garretson and Stanner, broad-jump; Murphy and Stanner, pole-vault; Hartley, high-jump; Spendeau and Denton, javelin; Denton and Barber, shot-put; and Denton and Frushour, discus.

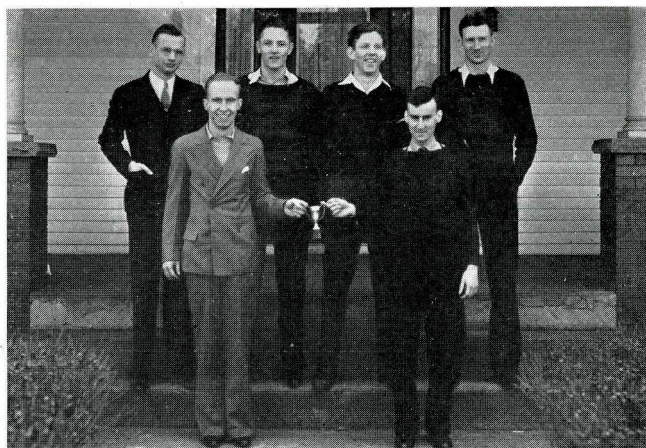




# INTRAMURALS

## INTRAMURALS

In the intramural sports of Hanover College, scores of students, not concerned in varsity athletics, compete. As well as forming a means of diversion for student spectators and players, the games furnish valuable training in all the sports. Volleyball, basketball, track, and baseball are the principal sports under this heading. The team winning the highest total number of points in all these games in a season receives the Intramural Cup, which is a much coveted trophy.



## INTRAMURAL VOLLEYBALL

In the intramural volleyball games this year, the Phi Gam team completed its entire season undefeated, and consequently won the volleyball championship; the Beta team finished in second place.



## INTRAMURAL BASKETBALL

A strong independent team, known as "The Bachelors", suffering only one defeat in the two rounds of intramural basketball, won the championship. The team was coached by Charles Stuckey of the varsity team, and they played very brilliant basketball throughout the season.

## INTERFRATERNITY BASKETBALL

In the first game of the Interfraternity Tournament, the Betas displaced the Phi Deltas by a 31-29 final score. The Phi Gams, in the second game shattered the Theta Nu chances by handing them a 31-29 defeat. In the final tilt, the Phi Gams retained the lead throughout the game to win from the Betas by a score of 21-13, giving them the trophy for the eighth time since 1920.





# WOMEN'S ATHLETICS



## **SOCCER**

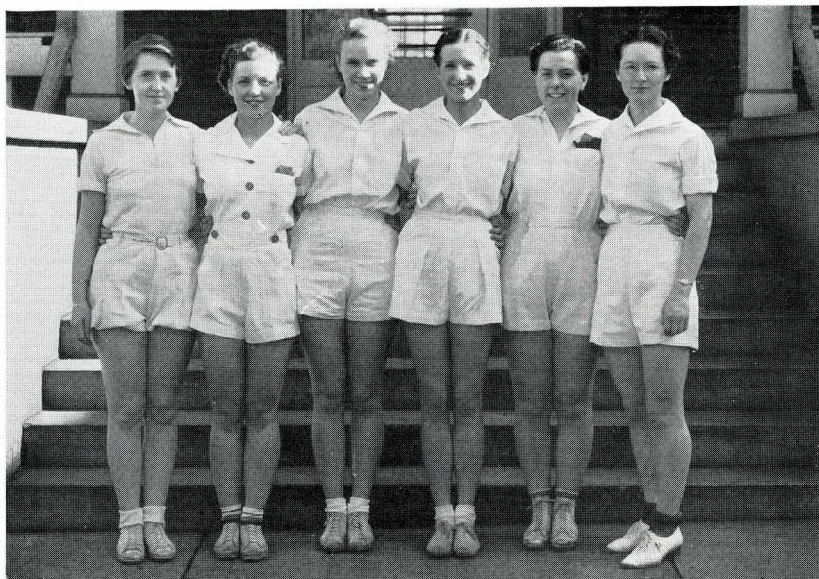
Soccer is a sport combining many of the features of basketball and football; it is very similar to men's speedball. A series of tournaments is played each year, and, from the winners, an honorary varsity team is chosen. Soccer is by no means an easy game, and the girls work out in strenuous daily practices to become winners.

## **HOCKEY**

Field hockey is responsible for many bruised shins of the players, but it provides thrills that more than compensate for them. The popularity of this sport has increased steadily since its adoption in 1931.



# WOMEN'S ATHLETICS



## VOLLEYBALL

Volleyball easily accomplishes its purpose of providing thrills and yet it is not so strenuous as many of the other sports. Skill plays an important role in the game, and the less skillful are the losers.

## BASKETBALL

Every girl is given her chance to show her ability on the basketball floor. By a series of intramural games, numerous teams are entered in the competition, calling for many players. Basketball never has, and probably never will lose its popularity as a favorite sport.





# WOMEN'S ATHLETICS



## WOMEN'S ATHLETIC ASSOCIATION

The Women's Athletic Association provides many activities for Hanover co-eds, not only in the field of sports, but also in picnics, hikes, and dances. It forms a "college-wide" organization of women, and their informal meetings furnished entertainment for everyone concerned. The publication of this organization is "The Hanover Sportsgirl".

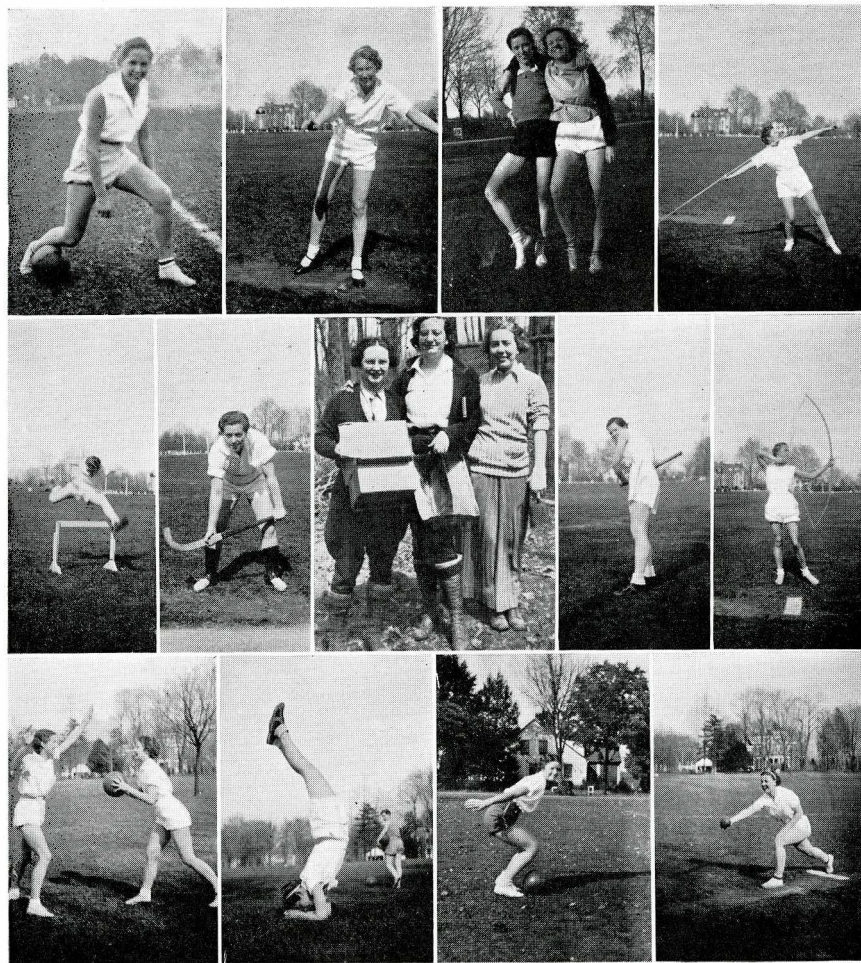
### W. A. A. BOARD

The W. A. A. Board is the governing body of the Women's Athletic Association. The Board holds weekly meetings, at which it determines the general policies to be followed by the association.

Miss Viola Mitchell, serving her eighth year in the capacity of director of women's athletics at Hanover, deserves a lot of credit for the present good standing of the Women's athletics.



# WOMEN'S ATHLETIC SNAPS



The snap-shots above show some of the co-eds in action in their various fields of sport. Almost any sunny day, in season, such scenes as these may be seen on the girls' athletic field.

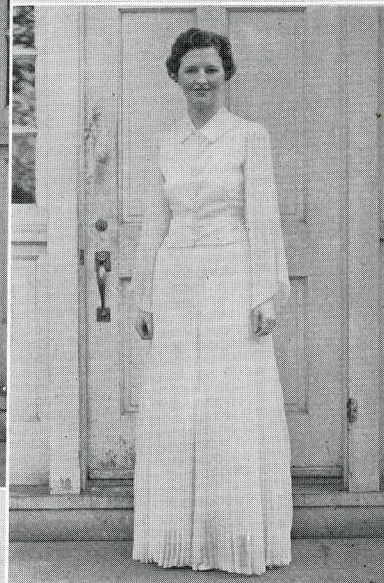


# FEATURES









MISS GRETCHEN HOHAM  
Plymouth, Indiana  
Homecoming Queen

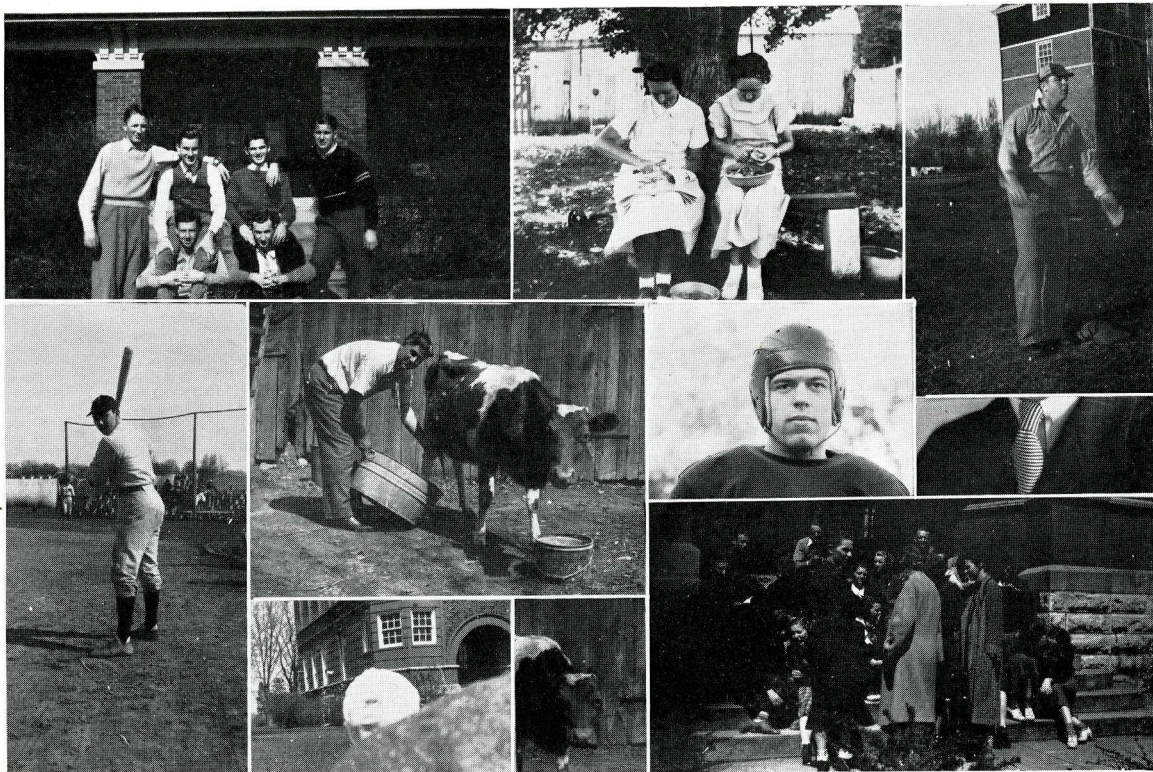
MISS MARGUERITE BRUMBAUGH  
Brownstown, Indiana  
Junior Prom Queen

MISS MARTHA ANNE HAMBLLEN  
Winchester, Indiana  
May Queen



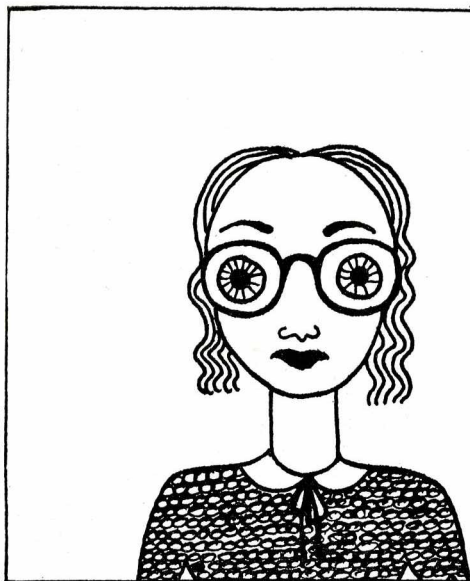




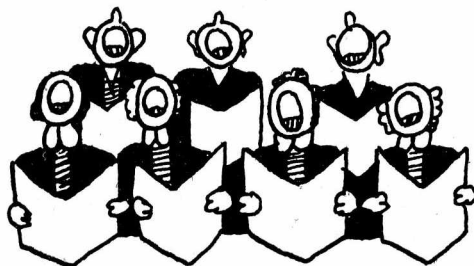


What, no loving-cup? . . . . Down on the  
 farm . . . . Expectation . . . . "Take Me Out  
 to the Ball Game" . . . . Get a barrel, Joe  
 . . . . Buck Rogers, 2000 A.D. . . . Head-  
 less horseman or necktie "ad." . . . Boo! . . . .  
 Has anybody seen my sister? . . . . Between  
 classes.

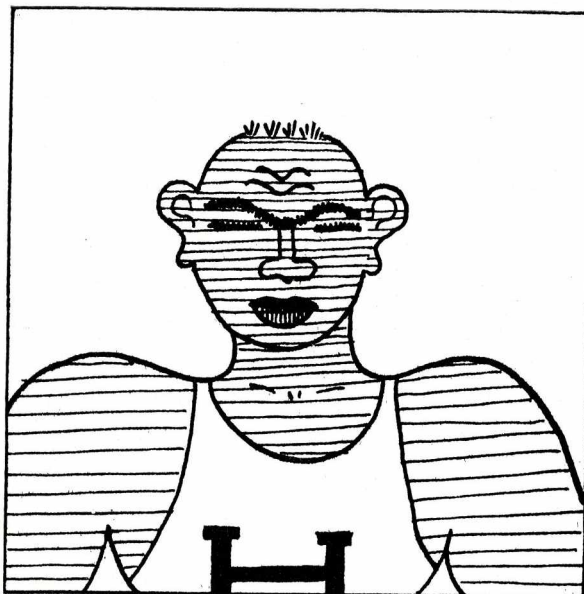




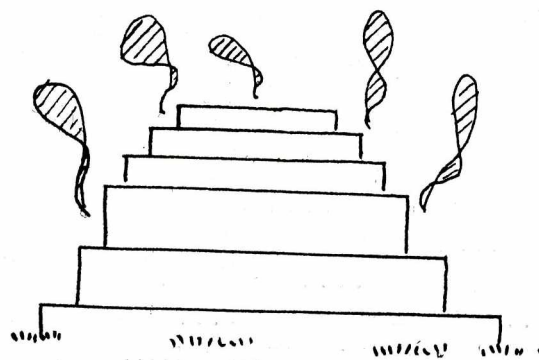
this girl is a goon  
she is a pretty goon because  
she is pale and white  
she has four big eyes too  
the teachers like her  
and she makes "a"s in everything



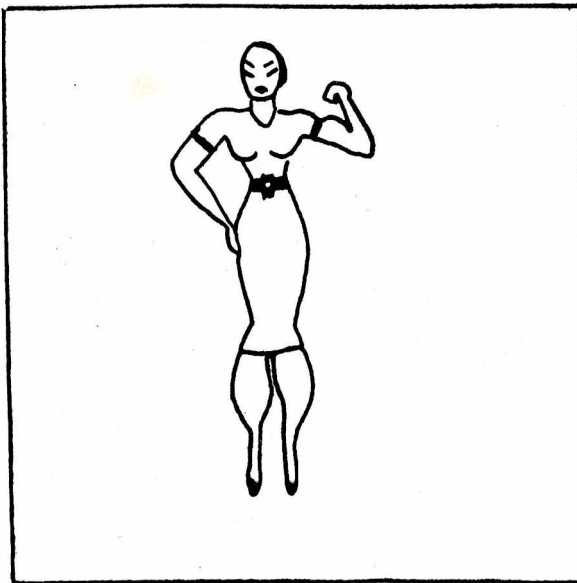
birds sing in the spring  
the choir sings because it is happy  
it makes us happy when it sings  
it can drag the varsity drag  
rag twelfth street rag  
and sing hymns in church too



isn't he big and strong  
he is a hanover athlete  
he is brave and dauntless  
his muscles flex and reflex  
he is a bone crusher  
he has strong teeth too



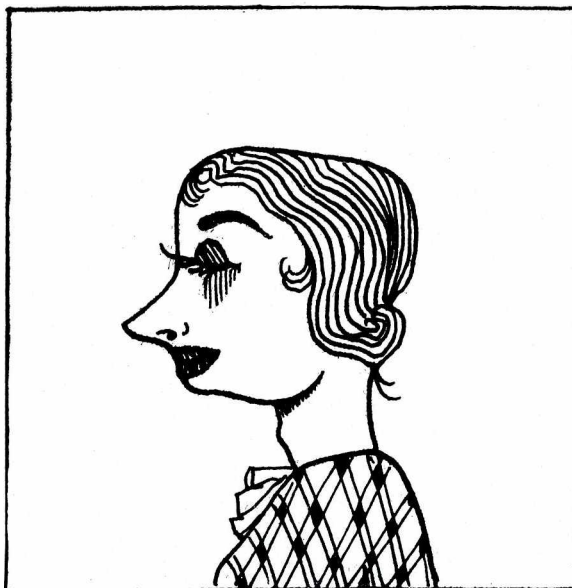
this silly is cigaret rock  
people hide here at chapel time  
they are hiding here now  
they are wicked and ashamed  
but we know they are there  
because we see smoke



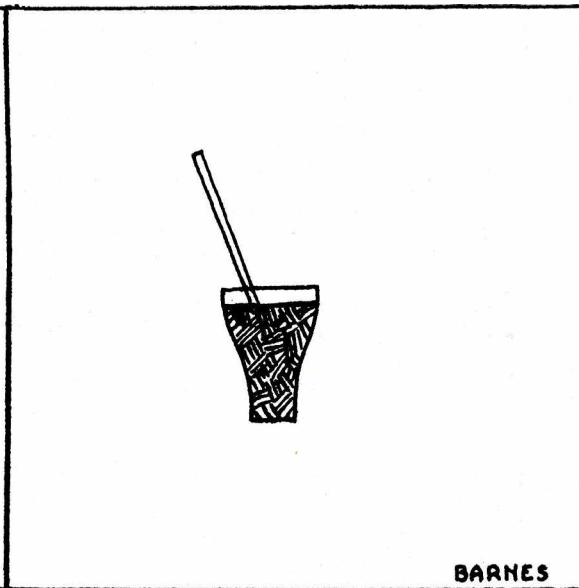
once she was thin and willowy  
now she is healthy and strong  
she has piano legs now  
and can walk 50 miles a day  
her arms are strong too  
because she is a phys-ed major



she is lovely but beware  
she is a bloody gold digger  
but she doesn't dig for gold  
she collects frat pins  
and she is a fire siren  
in sheep's clothing



what an odd looking girl  
she has a nose like a dog  
because she is a news hound  
she snoops for the triangle  
her bark is worth more than  
two bites in the bush



BARNES

roses are red  
violets are blue  
a coke is a cheap date  
and so are you





GENUINE GAS COKE

DOMESTIC FUEL OF  
HIGHEST QUALITY

NO SMOKE

NO SOOT

LOW ASH

MADISON UTILITIES  
CORPORATION

Phone 282

WE FURNISH ELECTRIC  
SERVICE

FOR

HANOVER

AND

HANOVER COLLEGE

MADISON LIGHT AND  
POWER COMPANY

Phone 287

MADISON, INDIANA

BILL YOUNG SAYS

GOODBYE

A HAPPY VACATION

AND

HURRY BACK

TO

YOUNGS

IN MADISON

IF YOU'RE

COLD

HOT

TIRED

HUNGRY

THIRSTY

CAPMUS

HOMESICK

LONELY

IN LOVE

WHATEVER'S

WRONG

COME IN

CABIN

BOLTON MILLING CO.

Lumber « Grain « Feed

PHONE 3620

HANOVER, INDIANA

YOUR'S TRULY

"THE OLD CONFEC"

HANOVER'S RENDEZVOUS

LAGRANGE & SON



# HANOVER COLLEGE BOOK STORE

HENRY M. LEE, Manager

NOTE BOOKS—LOOSE LEAF AND BOUND

FOUNTAIN PENS AND INKS

COLLEGE JEWELRY AND PENNANTS

ORDERS FOR BOOKS SOLICITED

USED BOOKS BOUGHT FROM STUDENTS

---

## OHIO RIVER ELEVATOR COMPANY

PLYMOUTH COAL  
SAND AND GRAVEL

PHONE 139  
Madison, Indiana

ALUMNI— STUDENTS— FACULTY—  
ALL WILL REMEMBER

INGLIS  
DRUG STORE  
AS STUDENT HEADQUARTERS  
Madison, Indiana

---

STUDENTS

HEADQUARTERS

IN MADISON

ROGER'S  
DRUG STORE

COMPLIMENTS OF  
**HEN & BEN**  
**THE SHOE MEN**  
MADISON, INDIANA

COMPLIMENTS  
OF  
**GLASS DAIRY**  
MADISON, INDIANA

**HERTZ'S**  
**MADISON'S FAVORITE**  
**SHOE STORE**

**DEMOCRAT**  
**PRINTING CO.**  
PRINTERS TO HANOVER STUDENTS  
MADISON, INDIANA

**BOICOURT'S BEAUTY**  
**SHOPPE**  
I. O. O. F. BUILDING  
PHONE 679  
MADISON, INDIANA

**GOOD COAL**  
**R. McKIN COAL CO.**  
PHONE 117  
MADISON, INDIANA

COMPLIMENTS OF  
  
**KYLE'S GROCERY**

GROCERIES » MEATS » FRUITS » VEGETABLES

**PURE MILK**  
**HONEY KRUST BREAD**

REAL HONEY  
PHONE 76  
HANOVER, INDIANA



J. E. REED

T. M. REED

## REED'S LAUNDRY

210 WEST MAIN ST.

TELEPHONE 226

## CASSIDY'S

### BARBER & BEAUTY SHOP

113 E. MAIN STREET

PHONE 329L

## W. B. ROBERTS

DEALER IN WHOLESALE CANDIES

PHONE 34

MADISON, INDIANA

## VAIL FURNITURE STORE

INDIANA'S LARGEST AND OLDEST

and RIPLEY should have added BEST

MADISON, Since 1839

## C. H. ROUSCH & CO.

BOOK SELLERS AND STATIONERY

MADISON, INDIANA

COMPLIMENTS OF

## KNOEBEL DRY CLEANERS

BOB SAYLE, Agent

## REIDEL BROTHERS

### GENERAL HARDWARE

"IF IT'S GOOD WE HAVE IT"

MADISON, INDIANA

COMPLIMENTS

OF

## S. GUMPERT CO.

DESSERT SPECIALTIES

Brooklyn, New York

## OSCAR C. BEAR

### JEWELER & OPTICIAN

MADISON, INDIANA

## WOOLEY

### JEWELER and OPTOMETRIST

MADISON, INDIANA

COMPLIMENTS OF THE

## FIRST NATIONAL BANK

MADISON, INDIANA

## QUALITY FOOTWEAR

YOUTHFUL STYLES

ECONOMY PRICES

## STANTON'S

Madison, Indiana



**Graessle-Mercer Co.**

INCORPORATED

**PRINTERS AND BINDERS**

**SEYMOUR, INDIANA**





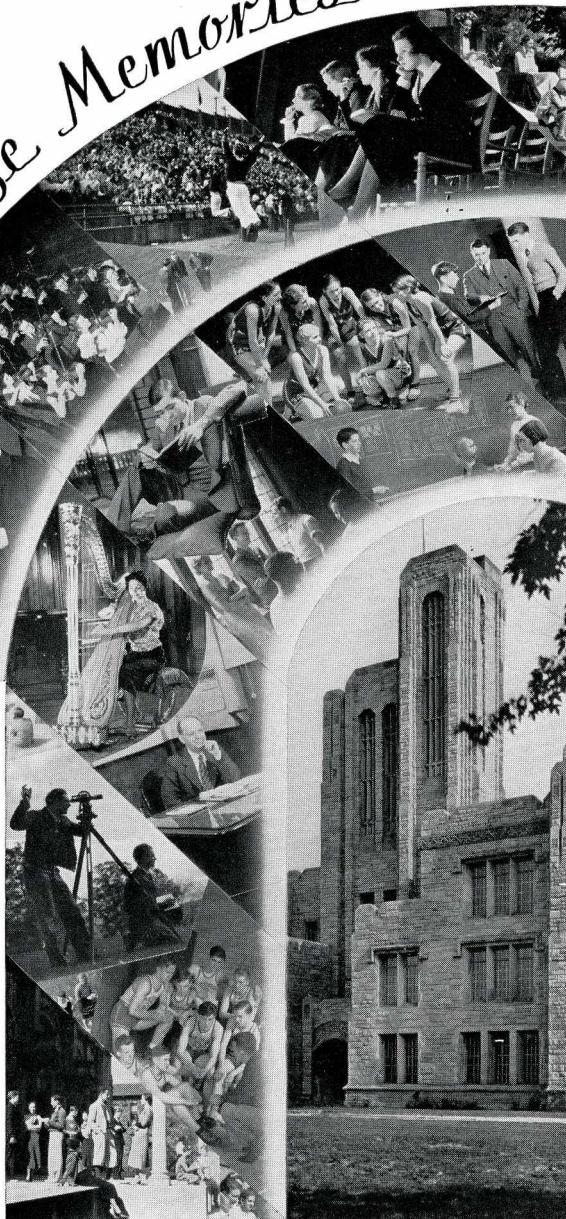
# *Pictures Dramatize Memories* ★ ★ ★

## ★ SCHOOL DAYS

... back in a flash with memories refreshed. The annual filled with pictures dramatizing school life as you lived it has an inestimable value to you as the years pass. Every school financially able should have an annual. Communicate with us for information concerning our specialized service for all kinds of school publications.



*School Publication Service*  
**INDIANAPOLIS ENGRAVING COMPANY**  
 INDIANAPOLIS, INDIANA



# AUTOGRAPHS



# AUTOGRAPHS





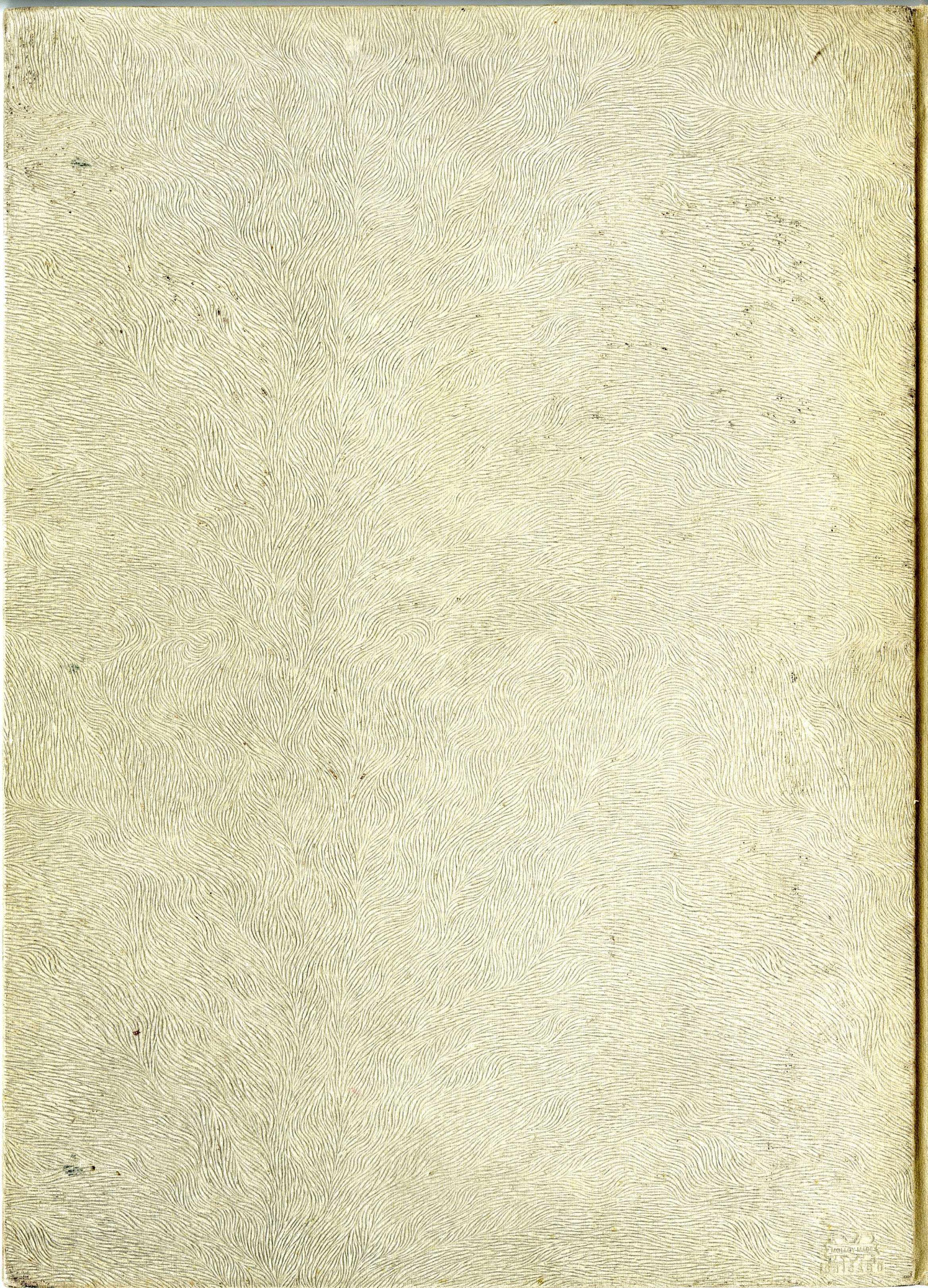












172  
MAY 19 1964  
1015450