

1

9

4

5

REVONAH







Il *Flemo* "







# The 1945 Revonah

EDITOR

JUDY DEMAREE

BUSINESS MANAGER

JUNE ANDERSON



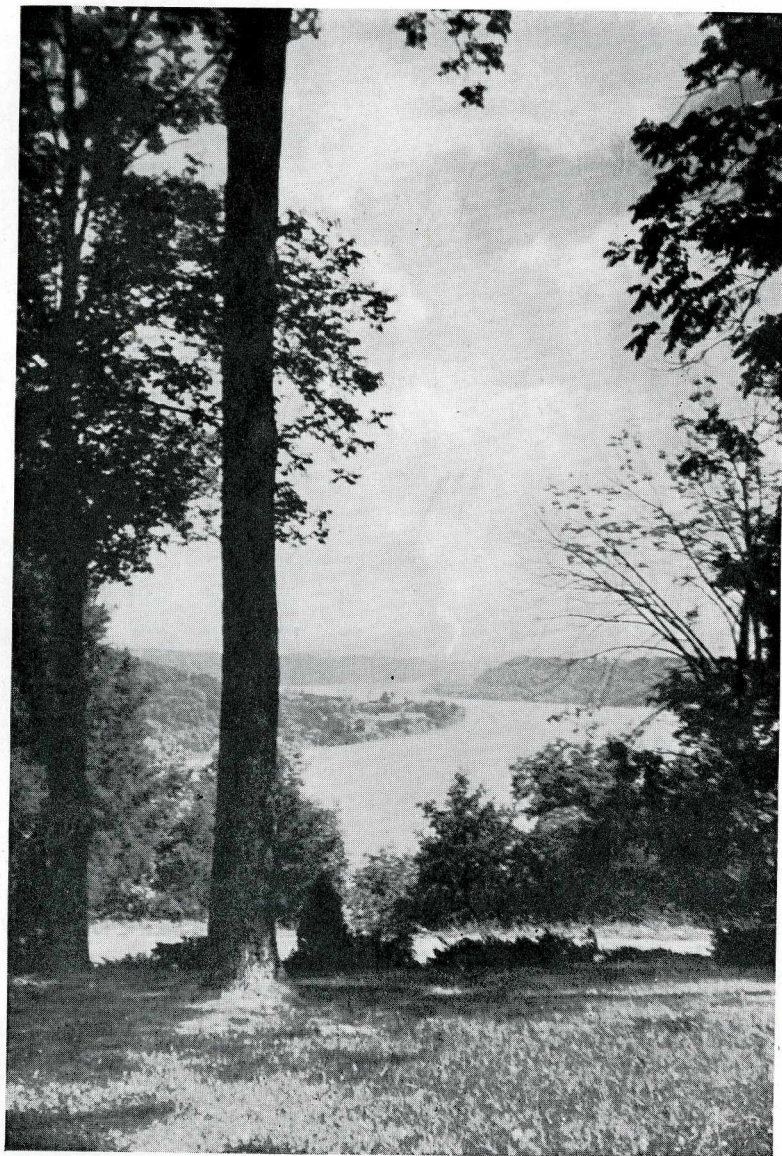
. . . It is a river of many moods and many changes. In sunlight it becomes the blue of Hanover skies; it turns gray with the gloom of the rain clouds. It reflects the brightness and darkness of Hanover days, but always it flows onward toward the sea.

Like the river, the Hanover scene, its people and buildings may change, but the Hanover spirit is constant, flowing onward, like the river, through the years.

The river has seen another year at Hanover, a year of changes, a year of some brightness and some darkness. The 1945 Revonah presents that story.



# THE OHIO





# DONNER HALL



WOMEN'S RESIDENCE



# ON THE CAMPUS

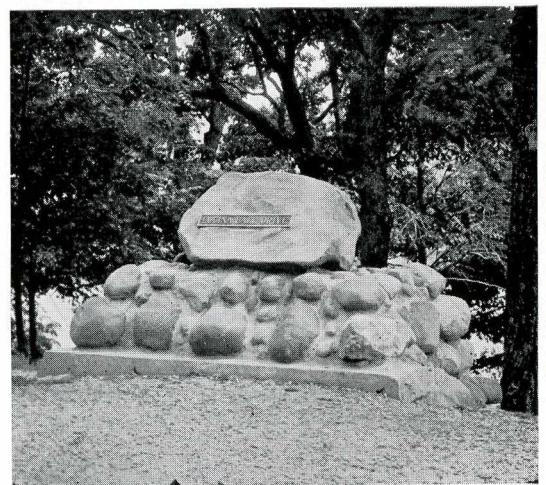


The Well House



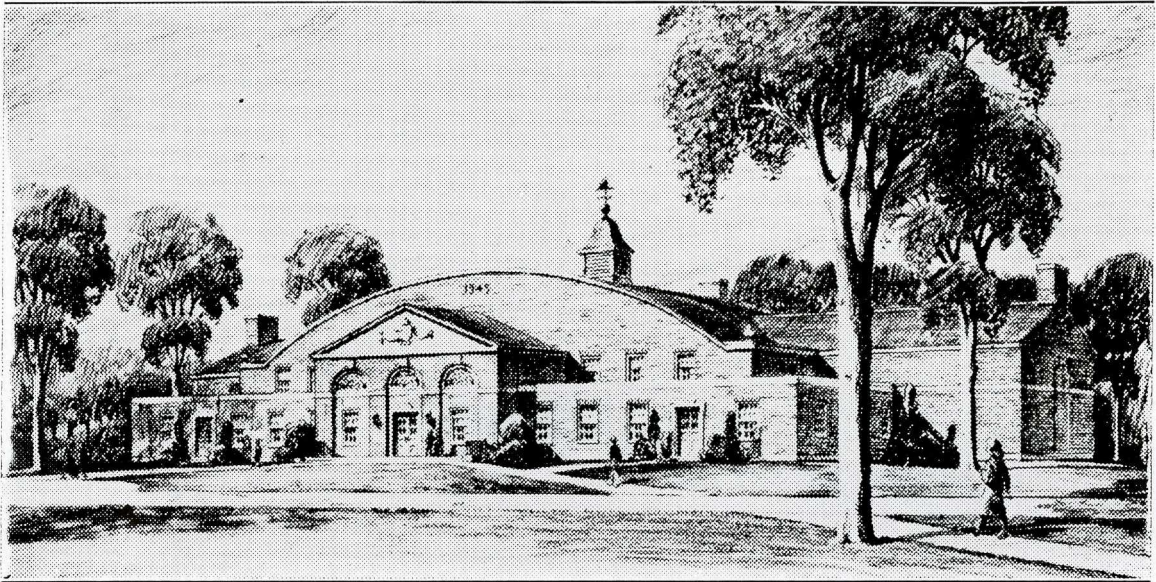
The Y Building,  
built in 1883

Marker on the Lucina Ball Drive,  
overlooking the Ohio





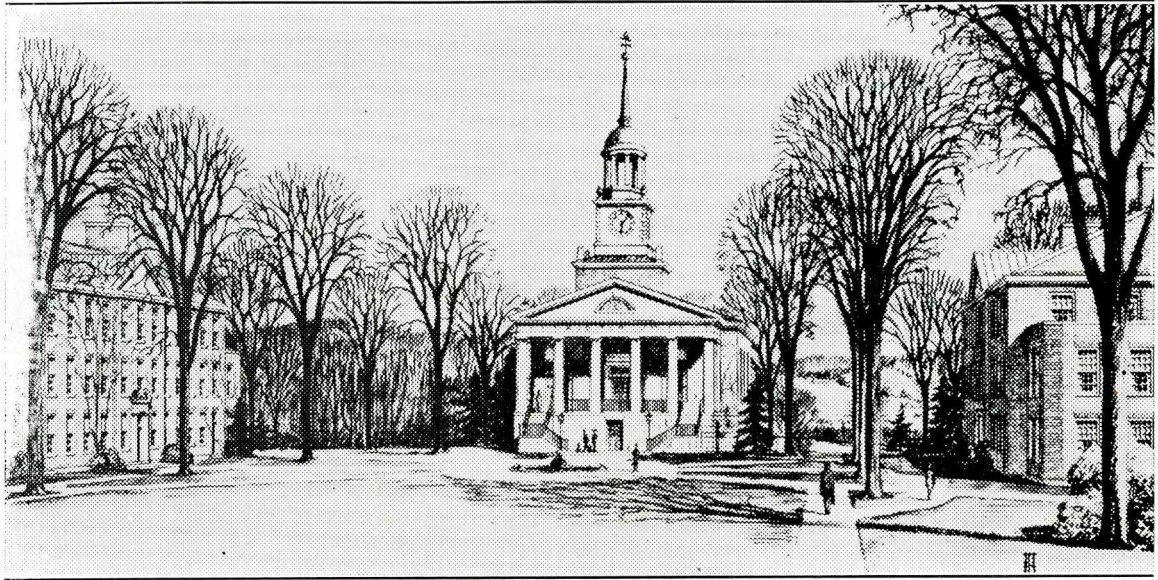
# LYNN HALL



Lynn Hall, the gift of Mr. and Mrs. Charles J. Lynn, is the new Physical Education Building for Men. This gift was made in 1940, and the building would have been built if materials had been available. This building provides abundant facilities for a college program. An additional feature is a large recreational department to be used for a student center.



# BUILDING PROGRAM



Science Building, Assembly Building, Humanities Building.

As soon as materials are available construction will start on these three new buildings. The science building was planned in 1941, but it was delayed. It will have laboratories, classrooms, offices and workrooms for Botany, Biology, Chemistry, Geology, Home Economics and Physics.

The Assembly building is planned for music, for dramatics and for all assemblies of the college. There is an auditorium to seat 800 and a well-planned stage. There will be arrangements to broadcast music or other features over the campus from the tower or over the radio.

The Humanities Building will have classrooms and offices for teachers and administrators. The corridors of this building have been planned to serve as art galleries.



## DEDICATION

Miss Mary Louise Fitton



Because her quiet understanding, her humor, her readiness and ability to help have influenced the college life of so many students, past and present; because of all the little things she does for others' happiness; and because of the scores of things she does for others that we will never know about . . . because of these, the 1945 Revonah is dedicated to Miss Fitton.



# CONTENTS

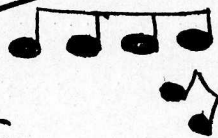
FACULTY



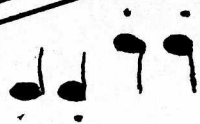
CLASSES



ACTIVITIES



ATHLETICS



ORGANIZATIONS



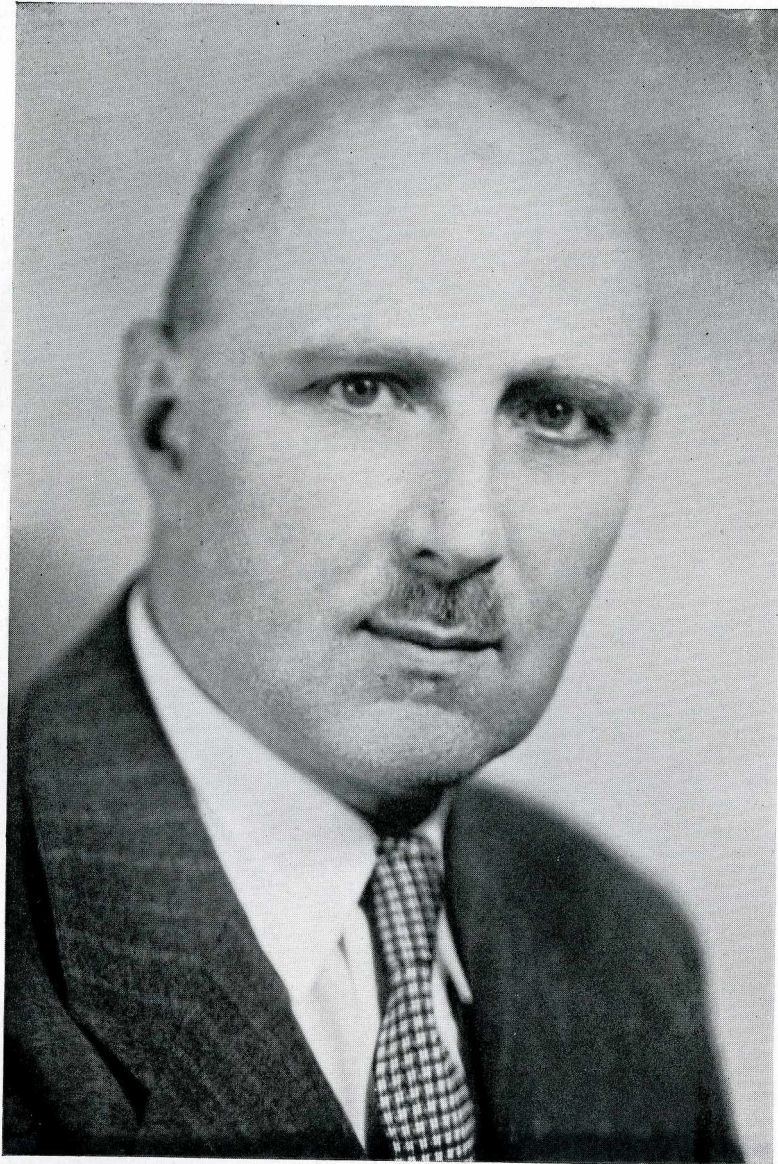


# REMEMBRANCE

In remembrance of those boys who used to roam the campus of Hanover and sit in the classrooms and who are now in the armed forces we wish to dedicate this page. They were a part of us and now they are gone for awhile, but they will never be entirely away from us. When we pause to look at the river view, we remember that they have looked at it, too. When we thrill to spring coming to Hanover, we remember that they thrilled to it, too. In a sense they are fighting for Hanover and for the ideas and ideals which they learned here. We are keeping those ideas and ideals alive so that they can come back to them just as we are keeping the dates at the Cabin and picnics and tennis games and dances and the friendliness that is Hanover for their return. And for those who will never return we will keep a place in our hearts forever for the Hanover man who gave his life for us.



# PRESIDENT



Dr. Albert G. Parker, Jr.

A.B. Park College  
B.D. Presbyterian Theological  
Seminary  
Ph.D. University of Chicago  
LL.D. Wabash College

Under the direction and leadership of her president, Hanover's post-war plans grow more complete and far-reaching day by day.

Dr. Parker's guidance has made certain the fact that Hanover will continue to increase her leadership among all the liberal arts colleges.

As head of the Hanover family for sixteen years, he has been able to foresee difficulties and to plan ways of meeting them successfully. He has made the bonds of Hanover friendship stronger and the traditions of the college a permanent part of each student's life.

Dr. Parker's foresight has been an elemental factor in promoting and carrying forward the post-war building program for the college. He has seen to it that Hanover and all that she means has and will continue to withstand the stress and strain of war years. Representing the strength of the present, he points the way to an even brighter future for Hanover College.



# ADMINISTRATION

Miss Snyder

Dr. Parker

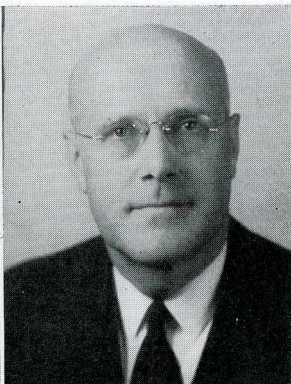
Monica Itoi



Hanover is very fortunate in having an exceptional faculty. It is made up of men and women admirably fitted for the job which is theirs. Our faculty has decreased in recent years because of the war, and many professors are carrying added burdens along with their already crowded schedule. In spite of this the teachers are always willing to take time to help and advise any students who ask for guidance. They are always ready to lend a helping hand where it is needed. The spirit of friendliness which pervades the Hanover campus is upheld and forwarded by the faculty.



# FACULTY



FRANCES FORRESTER

Professor of English  
Professor of Physical Education  
B.S. Peabody Institute

MARS M. WESTINGTON

Professor of Classical Languages and Literature  
B.A. University of Toronto  
M.A. University of Toronto  
Ph.D. University of Chicago

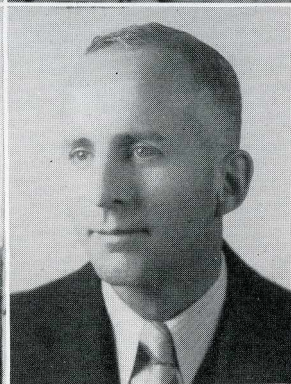


HENRY BAUMANN

Professor of Religion (First Semester)  
A.B. Hanover College  
B.D. Louisville Theological Seminary

VIOLA MITCHELL

Director of Physical Education for Women  
A.B. DePauw University  
A.M. The State University of Iowa



SARA O. ZIRKLE

Instructor in Psychology and Sociology  
A.B. Duke University  
M.A. Duke University

ROBERT PANZER

Superintendent of Buildings and Grounds  
B.S.C.E. Purdue University



R. EARL MARTIN

Professor of Physics  
A.B. Indiana University  
M.S. Lehigh University  
Ph.D. Indiana University

MRS. ALBERT H. WATTS

Manager of Donner Hall  
B.S. Columbia University



# FACULTY

## MARY LOUISE FITTON

Librarian  
A.B. Indiana University  
B.S. Columbia University

## PAUL S. CONKLIN

Professor of English  
B.S. Northwestern University  
A.M. University of Wisconsin  
Ph.D. University of Minnesota

## RUSSELL M. KUTZ

Professor of Education and German  
A.B. University of Wisconsin  
A.M. University of Wisconsin  
Ph.D. University of Wisconsin

## JEAN JUSSEN ANDERSON

Professor of French and Spanish  
A.M. Indiana University

## RUTH GRAHAM

Professor of Music  
A.B. Franklin College  
M.S.M. Union Theological Seminary

## NED GUTHRIE

Professor of Chemistry  
B.S. Illinois Wesleyan University  
M.S. University of Illinois

## CHARLES B. SWARTZ

Professor of Religion (Second Semester)  
A.B. Lafayette College  
B.B. Oxford University  
B.D. Union Theological Seminary  
D.D. Blackburn College

## MRS. A. K. WHALLON

Dean of Women

## JOSEPH L. HYATT

Professor of Biology  
M.S. University of Illinois

## Not pictured:

### A. R. HOGUE

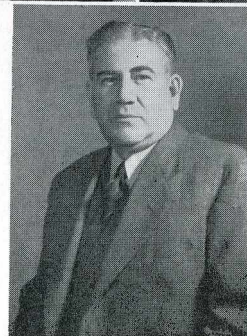
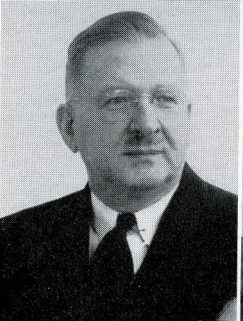
Professor of History

### LAURA FAVILLE CONKLIN

Instructor of Home Economics

### R. L. STEINER

Professor of Business Administration





## CLASSES

Dearest Phil —

This is one of those times that words  
are useless — You know how I  
feel — so here's to Harover,  
to AΔΠ, and to you!

Love,

Rachel



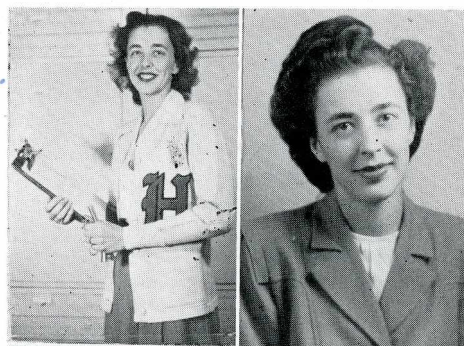


# SENIORS

I fooled you  
didn't I -  
I wrote somewhere  
else  
where??  
foody

## MARTHA FOSTER

Alpha Delta Pi  
Louisville, Kentucky  
Science Club 1, 2, 3, 4  
Modern Dance Club 1  
Revonah Staff 2, 3  
Pem Club 1, 2, 3, 4; President 4  
W.A.A. 1, 2, 3, 4  
Y.W.C.A. 1, 2, 3, 4  
Sportsgirl Staff 2  
Panhellenic Council 2



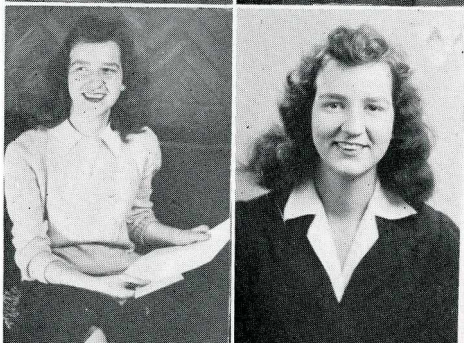
## JEAN HASSLER

Phi Mu  
Connersville Indiana  
Entered from Miami University 2  
Student Council 3, 4; President 4  
Representative Student 3, 4  
Panhellenic Council; President 4  
W.A.A. Board 3, 4; President 4  
Gamma Sigma Pi 3, 4  
Phi Mu President 4  
Triangle Staff 3, 4  
Sportsgirl Staff 2, 3  
Pem Club 3, 4  
Dormitory Council 3  
Orchestra 2



## FRANCES EICKHOFF

Alpha Delta Pi  
Indianapolis, Indiana  
Sportsgirl Editor 4  
Advertising Manager, Triangle 3, 4  
Revonah Staff 2  
Alpha Phi Gamma, 2, 3, 4  
Hills Thoughts Staff 4  
Class secretary 1, 3  
Alpha Delta Pi Vice-president 4



## MARIAN MORGAN

Alpha Delta Pi  
Huntington, Indiana  
Entered from Lindenwood College 3  
Alpha Delta Pi recording secretary 4  
Science Club 3, 4  
S.C.A. 3, 4  
Hill Thoughts Staff 4



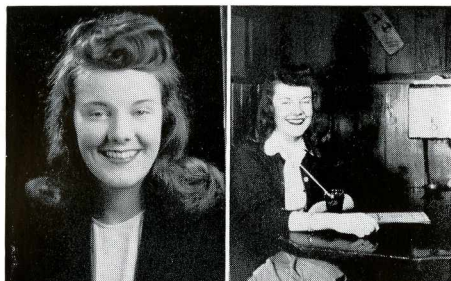
## FRANCES BARNES BRUCE

Alpha Delta Pi  
Missoula, Montana  
Gamma Sigma Pi 3, 4  
Alpha Phi Gamma 4  
Student Council 4  
Alpha Delta Pi President 4  
Panhellenic Council secretary 4  
Triangle staff 4  
Revonah staff 3, 4  
W.A.A. Board 4  
Sportsgirl staff 2, 3, 4  
Science Club 3, 4





# SENIORS



LOUANNA STEPHENS

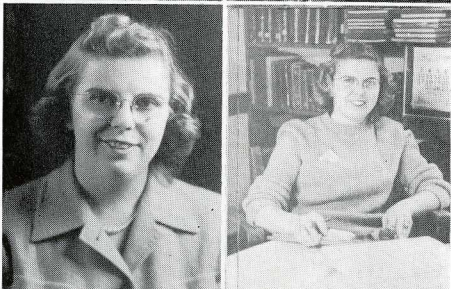
Phi Mu  
Winamac, Indiana  
Phi Mu secretary 4  
Class Secretary 2  
Spanish Club 1  
Christian Service Club 3, 4  
Chorus 1  
W.A.A. 4  
Music Club 2  
Dramatics Club 4  
Indiana University 3



JESSIE RUTH BOBB

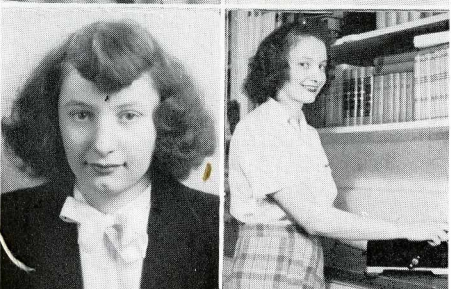
Alpha Delta Pi  
Seymour, Indiana  
Biology Assistant 4  
W.A.A. 1, 2, 3, 4  
W.A.A. Board 3, 4  
Gamma Sigma Pi 2, 3, 4  
Alpha Phi Gamma 3, 4  
Science Club 1, 2, 3, 4; president 4  
Classical Club 1  
S.C.A. 1, 2, 3, 4  
Revonah co-editor 3  
Triangle staff 3, 4  
Sportsgirl staff 3, 4  
Class vice-president 3; secretary 4

*Dearest Phil,  
Good-luck always  
to a wonderful gal. You're  
tops. Keep up the good  
work.  
Loyally + with love,  
Jelly*



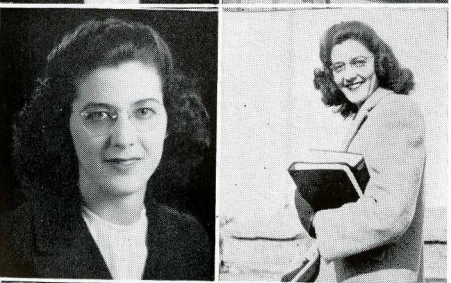
HELEN STRAWBRIDGE

Alpha Delta Pi  
Green Valley, Illinois  
Triangle editor 4; staff 1, 2, 3  
W.A.A. 1, 2, 3, 4; president 3  
Alpha Phi Gamma 2, 3, 4; president 4  
Gamma Sigma Pi 2, 3, 4; president 4  
Student Council 3, 4  
S.C.A.; cabinet 2  
Science Club 1, 2, 3, 4; secretary 3  
Representative student 3, 4  
Alpha Phi Gamma Freshman Award  
Band 1  
Sportsgirl staff 2, 3, 4



HARRIETT THURSTON

Independent Women  
Cynthiana, Indiana  
Independent Women president 4  
S.C.A. Cabinet 2, 3, 4; president 4  
Christian Service Club 1, 2, 3; president 3  
Revonah co-editor 3  
Representative student 3, 4  
Alpha Phi Gamma 2, 3, 4; secretary 3, 4  
Gamma Sigma Pi 3, 4  
Student Council 3, 4  
Triangle staff 1, 2, 3, 4  
W.A.A. 1, 2, 3, 4  
Sportsgirl staff 2, 3, 4  
Charles Lathrop Pack Essay Award 1  
Margaret Kitchell Whallon Essay Prize 3  
Spanish Club 1



JUNE ANDERSON

Independent Women  
Madison, Indiana  
Independent Women secretary 4  
Christian Service Club 2, 3, 4; president 4  
W.A.A. 2, 3, 4; vice-president 4  
Revonah business manager 4  
Alpha Phi Gamma 4  
Triangle staff 4  
Science Club 1, 2, 3, 4  
Dormitory Council 3, 4  
S.C.A. 1, 2, 3, 4



ANDREW LOWRY

Sigma Chi  
Fort Wayne, Indiana  
Entered from Wooster 2  
Consul, Sigma Chi 3, 4  
President of class 3, 4  
S.C.A. 2, 3, 4; president 3  
Choir 2, 3, 4  
Basketball 3, 4  
Chi Epsilon Phi 2



# JUNIORS



Durick, Paddock, Fry, Ellis, Mummert, Winters, M. H. Miller, Baynes, Itoi, Armbruster, H. Gilbert, Davis, M. J. Reed, B. Bennett, J. Demaree, Rogers.

The Junior class of Hanover College is predominantly feminine. With only one more year to complete their college education, these juniors realize the value of higher education in the reconstruction of the post-war world. The number of women now enrolled in colleges and universities are testimony to the fact that women will play an increasingly important role in the professional world within the next few years.

Many of these upperclassmen have had to take on extra work. A few are now doing the same number of jobs that many did not so long ago. Even these new and heavier responsibilities are equipping these students for a more effective and profitable social and professional life after graduation.

These juniors are next year's seniors. Thus far they have made a record of which they can be very proud; next year is full of promise for them.

The officers of the class are Imogene Rogers, president; and Mary Jane Reed, secretary-treasurer.



## SOPHOMORES



First row: Tash, L. Gilbert, Eisenhardt, Hara, Folger, Hardin, Tullis, Sommer, Schuster, Behrman, Allan.  
Second row: Lambert, Dean, Fawcett, MacMurchy, Ramsay, Taylor, Evans, McCormick, Kopel, Graebe.  
Third row: Adams, W. Walker, Baker, G. Wilson, M. Demaree, C. Jones, Heslip, Ewing, S. Reed, Siegel.  
Fourth row: Marilyn Shannon, R. A. Jones, Martin, Zinszer, Hernandez, Orewiler, Mueller, Lasley, Snyder, Voorhees.

Although slightly decreased in number, the Sophomore class is still strong this year. They have fitted themselves into the college life at Hanover. They have surmounted the difficulties of their freshman year and are ready to go on — to attain new heights. They realize the seriousness of the world situation today and are doing their part by preparing themselves to meet the problems that will face them in the difficult tomorrow which is just ahead. The members of this class are ambitious and capable. They have shown their ability by participating in many campus activities. They know what they want and are going after it, demonstrating to the college and to the world that fighting spirit which is so much a part of America.

The sophomore class was led this year by Marianna Demaree, president and Pauline Sommer, secretary-treasurer.



# FRESHMEN



First row: Hoffine, Kruggel, Shively, Story, Rutledge, Patchell, Cadwallader, Barnes, Smith, Steadman, Clover, Jackson.

Second row: Green, Stewart, Shirai, Beck, Clements, Vestile, Goodlet, A. Jones, Emmert, Gwinn, Wells, M. E. Wilson, Berg, Hoskinson.

Third row: Chambers, Peden, F. Walker Reibert, E. Bennett, Brooks, Buchanan, Wharton, Rehm, Tetrick, A. K. Jones, Geake, Witmyer, Gunnoe, Cummins, McNeeley, Gibson, Weatherbee.

Fourth row: Reese, McKenna, Voiles, Bender, M. A. Jones, Peggy Shannon, Stansifer, McReynolds, Chapman, Joyce, Fowler, Gray, Nauer, Morris, Avril, Bullock, Goar.

Fifth row: Wolverton, Sheppard, Duane Campbell, Doles, Downey, Hedden, Roberts, Coomer, Dewitt Campbell, Storm.

In spite of the fact that much of the pre-war glamour of college life has disappeared, this courageous group of young people has come to Hanover not for fun and good times but to improve themselves so that they will be ready for the problems that will face them in the future. In their first year here they have shown themselves worthy to be called students of Hanover College and citizens of the United States. Theirs is a double responsibility, first to Hanover College and second to the world. It is they who will be the future leaders of the country and for this they are preparing.

This year Thomas Roberts acted as class president, Robert Wolverton was vice-president and Margaret Albertson was secretary-treasurer.



## ACTIVITIES

Dear Phyl,

this is a good page for an "activities-minded" person. You'll be a top Hanoverian of all time!

Take it from one who is known you a long while (and ditto goes, of course!), you're a grand girl, and I appreciate your friendship.

We've had loads of fun — sports, science, and Alpha Delta Pi! Perhaps we should add hypnotism!

See you at our soda bar between those laboratories.

I give a lot of those "behind the scenes" tasks to your care. You've handled plenty now.

Loyally and love,  
Straub.



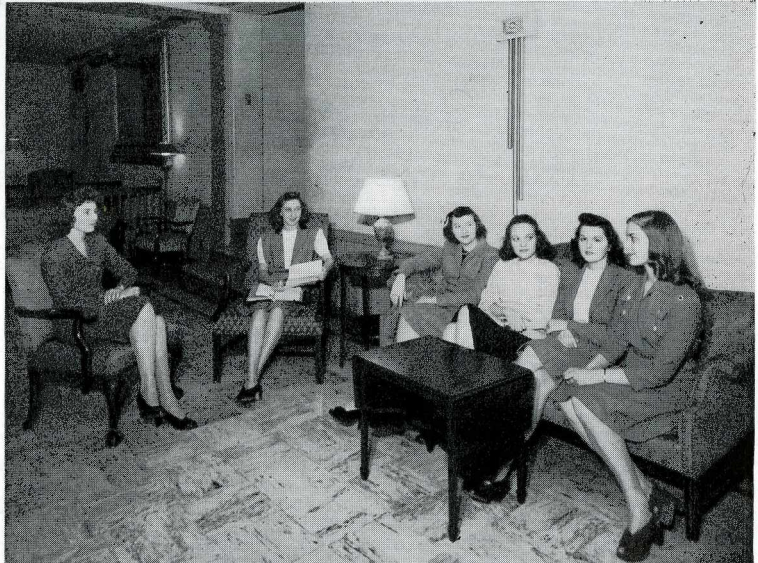


# COUNCILS

Duane Campbell, Mummert, J. Demaree, Bruce, Bobb, Hassler, Rogers, Strawbridge, Thurston, Armbruster, Baynes.



Bruce, Hassler, Rogers, Ebersole, McGilliard, J. Demaree.



## STUDENT COUNCIL

Representatives of campus organizations are elected each year by a faculty committee to compose the Student Council. This student group brings the faculty and students together to discuss problems affecting the college body. In conjunction with the Student Affairs Committee, the Student Council brings before the faculty problems, ideas, and desires of the students.

This Council budgets the student activity fee and sponsors various social and recreational activities throughout the year.

The officers this year are Jean Hassler, president and Ruth Baynes, secretary.

## PANHELLENIC COUNCIL

The Panhellenic Council on the Hanover campus is composed of three members from each of the national sororities, Alpha Delta Pi and Phi Mu. The council endeavors to uphold the aims of a wholesome and beneficial sorority life and to cooperate with the college in its many efforts.

The purpose of the Panhellenic Congress is "To maintain on a high plane fraternity life and interfraternity relationship, to cooperate with college authorities in their effort to maintain high social and scholastic standards throughout the whole college, and to be a forum for the discussion of questions of interest to the college and fraternity world."



# COUNCILS



First row: J. Demaree, Ellis.

Second row: Baynes, Winters, Mueller.

Third row: Thurston, B. Wolverton.



Seated: Fry, Tash, Mummert, Davis, Baynes, Orewiler, Rogers.

Back row: Reed, Tullis, J. Demaree, Anderson, Ewing.

## S. C. A. CABINET

The Student Christian Association is an organization which coordinates the activities of the YMCA and the YWCA. Founded in the spring of 1940, it sponsors many all college functions throughout the year. The organization is under the direction of a cabinet which consists of nine members elected yearly by the student body. Through its all membership meetings and chapel programs, it strives to bring the student body together in Christian fellowship. The all-college picnic is an annual event and the all-college sing in the spring has become a college tradition.

The officers of this year are: Harriett Thurston, president; Judy Demaree, secretary, and Eubie Martin, treasurer.

## DORMITORY COUNCIL

The Dormitory Council is made up of eight girls who are elected every year by the residents of Donner Hall. The council is the governing body for the dormitory. A meeting is held every Wednesday night in which the council discusses the problems which have arisen in the dormitory and arranges for various social functions such as formal dinners and dormitory parties. Proctors for each corridor of the dormitory are chosen by the council.



# STAFFS

Seated: Ellis, Fleming, Davis, Miss Fitton, Strawbridge, Rogers, Eickhoff, M. H. Miller, Zinszer.  
Standing: Rutledge, Beck, Evans, Barnes, Clover, Smith, Thurston, Bobb, Nauer, Lindberg, E. Bennett, Bruce, J. Demaree, Baynes, Mummert.



Seated: Allan, Fleming, Davis, J. Demaree, M. J. Reed, Zinszer, Anderson.  
Standing: Ellis, Baynes, B. Wolverton, Lindberg, Evans.



## TRIANGLE STAFF

Editor .....Helen Strawbridge  
Faculty Advisor.....Miss Mary Louise Fitton  
Business Manager.....Mary Helen Miller  
Associate Editor.....Margaret Davis  
Advertising Manager.....Frances Eickhoff  
Circulation Manager.....Imogene Rogers  
Feature Editor.....Judy Demaree  
News Editor.....Mary Louise Ellis  
Art Editor.....Mary Zinszer  
Society Editor.....Frances Barnes Bruce  
Pat Evans  
Sports .....Phyllis Fleming  
Alum Dispatch.....Jessie Ruth Bobb  
Petite Prattle.....Imogene Mummert

## REVONAH STAFF

Editor.....Judy Demaree  
Business Manager.....June Anderson  
Copy Writers.....Ruth Baynes  
Margaret Davis  
Copy Editor.....Frances Bruce  
Photography.....Louise Ellis  
Wilma Lindberg  
Sports Editor.....Phyllis Fleming  
Art Editor.....Mary Zinszer  
Layout Editor.....Mary Jane Reed  
Senior Editor.....Vesta Evans  
Advertising Managers.....Bob Wolverton  
Gloria Allan



# STAFFS



Front row: Heslip, S. Reed, Bruce, Strawbridge, Cummings, Lasley, Nauer.

Second row: Weatherbee, Peggy Shannon, Story, Vestile, Eckhoff, Smith, Zinszer, Tash.

Third row: Ellis, Barnes, Steadman, Brooks, Bobb, Avril, Mummert, Bender, J. Demaree.



First row: Miss Forrester, Miss Fitton, Duane Campbell, Eickhoff, Morgan, Mummert, Baynes, M. H. Miller, Zinszer.

Second row: Dr. Conklin, Rogers, J. Demaree.

## SPORTS GIRL STAFF

The Sportsgirl, which is the monthly magazine of the W.A.A., was first published in November of the year 1933. Since then the paper has varied in size and shape but not in quality. The staff is in charge of putting out the paper, and this year Frances Eickhoff is the able editor. The publication is a member of the National Duplicating Paper Association.

## HILL THOUGHTS STAFF

The literary anthology, Hillthoughts, is a compilation of the best writings of the college students. The publication contains the best prose and poetry composed throughout the school year.

This year, the fifth time the publication has appeared, the edition includes the efforts of many Hanover alums who are now in service in various parts of the world.

The staff governing the selection of prose and poetry included in Hillthoughts is composed of Miss Mary Louise Fitton, Dr. Paul Conklin, Miss Frances Forrester, Marian Morgan, Judy Demaree, Ruth Baynes and Imogene Mummert.



## CLUBS

First row: Tash, Beck, Vestile, L. Gilbert, Geake, Hoffine, Shively.

Second row: McNeeley, Hardin, Eisenhardt, Anderson, Tetrick, A. K. Jones, Joyce.

Third row: Evans, McCormick, Voiles, Graebe, Heslip, Goar, Armbruster.

Fourth row: F. Walker, G. Wilson, Sheppard, Green, Snyder, Miss Forrester.



First row: Shively, Fleming, Lindberg, Bobb, Adams, Hara.

Second row: Orewiler, Graebe, Foster, Morgan, Strawbridge, Allan.

Third row: Rogers, Dan, Anderson, Kopel, McCormick, Evans.

Fourth row: Martin, Hernandez, Dr. Martin, Ebersole, B. Wolverton, Prof. Hyatt, Prof. Guthrie.



### CHRISTIAN SERVICE CLUB

The Christian Service Club was organized in Hanover in 1939. Its purpose has been the fostering of Christian fellowship and service on the campus.

This year the group has met every Thursday night at the home of Mrs. Westington. The organization makes an annual trip to the Jefferson County poor farm at Christmas time, taking gifts and singing for the residents of the farm. This year a number of stocking dolls were made and sent to the children in a settlement house in Chicago. The group also does knitting for the Red Cross. This year June Anderson served as president.

### SCIENCE CLUB

Five hours of B in any science entitles any student to membership in Science Club. The aims of the club are to further interest in science and to investigate various scientific fields more thoroughly. Meetings are held twice a month and are conducted by students interested in a particular branch of science. In this way fields that are only briefly reviewed in class work can be studied more completely.

The club was under the direction of Jessie Ruth Bobb, president and sponsored by Dr. R. Earl Martin, Prof. Ned Guthrie and Prof. Joseph Hyatt.



# CLUBS



Morgan, Armbruster, J. Demaree, Dr. Conklin, Miss Fitton, Taylor, Zinszer, Bruce, Strawbridge, Miss Forrester, Mummert, Heslip, M. H. Miller.



First row: Tash, Rutledge, Peggy Shannon, MacMurchy, Davis, Lambert, A. K. Jones, M. Demaree, Tullis.

Second row: Fry, Tetrick, Smith, Rehm, Chapman, Winters, Wharton, Stokes.

Third row: Albertson, S. Reed, Thomas, Wright, M. J. Reed, Stevens, Beck.

Fourth row: Goar, Wilson, Nauer, Lagemann, Barnes, Marilyn Shannon, Morris.

## POETRY CLUB

Poetry Club is an organization for all those who are lovers of good literature. Organized in 1940 and now sponsored by Dr. Conklin, it meets on alternate Sunday nights at the homes of various faculty members and at the A. D. House and Phi Mu lodge. There are no regular members of the club. Every year one person from each organization is chosen by Dr. Conklin to extend invitations to different members of their group for each meeting. The programs usually consist of reading of poetry and prose by various members of the faculty and the student body.

## DRAMATICS CLUB

The Hanover Players are a group of students who are interested in various phases of speech and theatre work. Because of wartime conditions this year there was no permanent director for the organization. However, under student supervision various aspects of the theatre work were studied and practical projects were carried out. Student directors supervised the production of one-act plays.

Officers serving this year were Nancy MacMurchy, president; Margaret Davis, vice-president, and Jean Lambert, secretary-treasurer.



# HONORARIES

First row: Ellis, Davis, Fleming, Kopel, Sommer, Ebersole.

Second row: J. Demaree, Bruce, Hassler, Bobb, Thurston, Strawbridge.



First row: Davis, Ellis, Anderson, Baynes.

Second row: Mummert, Miss Fitton, Strawbridge, Thurston.

Third row: Dr. Conklin, Bruce, Eickhoff, Bobb, J. Demaree, M. H. Miller, Fleming.



## GAMMA SIGMA PI

Gamma Sigma Pi was organized on the Hanover campus in 1926 for the purpose of giving recognition to those students who show outstanding ability in character and scholarship, to promote high scholarship and to raise the standards of the college in general. Requirement for membership is that the student make 2.5 average in two out of three consecutive semesters and maintain a 2.0 average thereafter. The highest ranking member of the junior class automatically becomes president of the organization during his senior year.

## ALPHA PHI GAMMA

Alpha Phi Gamma is a national honorary journalistic society, established to encourage and uphold the best standards of journalistic endeavor.

Rho Chapter of Alpha Phi Gamma was established on the Hanover campus in 1927 for the recognition of those students who possess outstanding journalistic ability.

Contributors to any of the student publications of the college which create a higher journalistic quality in the publication are invited to membership. The editor of the Triangle, Helen Strawbridge, served as president this year.



# ACTIVITIES



Standing: J. Demaree, Thurston, Ellis, Hassler, Bruce.

Seated: Strawbridge, Bobb.



Left, top to bottom: Martin, S. Reed, Tullis, Hassler.

Across: Tash, Dean.

Right, top to bottom: Eisenhardt, Bennett, Stansifer, Foster.

## REPRESENTATIVE STUDENTS

Representative students are selected each year by the faculty from the junior and senior classes. In choosing these students the faculty considers campus citizenship, scholarship and participation in extra-curricular activities. They must be representative of the standards set by Hanover College. This is the seventh year that students have been chosen for this recognition. The Revonah and the Triangle sponsor the selection of these students.

## PEM CLUB

The PEM Club is composed of all girls who are working for majors or minors in physical education. On the third Wednesday of each month the PEM Club meets to discuss problems affecting the physical education department.

The aims of the club are to promote a more professional spirit among the members and to emphasize the values of sportsmanship and cooperation.

The officers this year were Martha Foster, president; Mary Louise Eisenhardt, secretary-treasurer; Virginia Dean, social chairman, and Shirley Reed, program chairman.

Miss Mitchell, head of the physical education department and her assistant, Miss Forrester, sponsor the group.



# MUSIC

First row: Cadwallader, Zinszer, Mummert, Goodlet, Rutledge, Hof-fine.

Second row: Fry, Wharton, Smith, Patchell, Ramsay, Voiles, R. A. Jones, Rehm.

Third row: A. Jones, Marilyn Shan-non, Baumann, Steiner, Lowry, B. Wolverton, Westington.



Seated: Fry, Wharton.

First row: Marilyn Shannon, Clover, Goodlet, Zinszer, Steadman, Rogers, Ramsay, Duane Campbell, Jackson, McCormick, Smith, Patchell, Baker, Shively.

Second row: Paddock, Reese, B. Wol-verton, Siegel, Bullock, M. E. Wilson.



## COLLEGE CHOIR

The college choir under the leadership of Miss Ruth Graham is an important organization on the campus. Rehearsals are held twice a week and the choir has the privilege of singing in the Hanover Presbyterian Church each Sunday. The group also appears in chapel from time to time and in other special programs throughout the year. Credit towards graduation is given to members who have participated in the choir more than one semester.

## SPECIAL SINGING GROUP

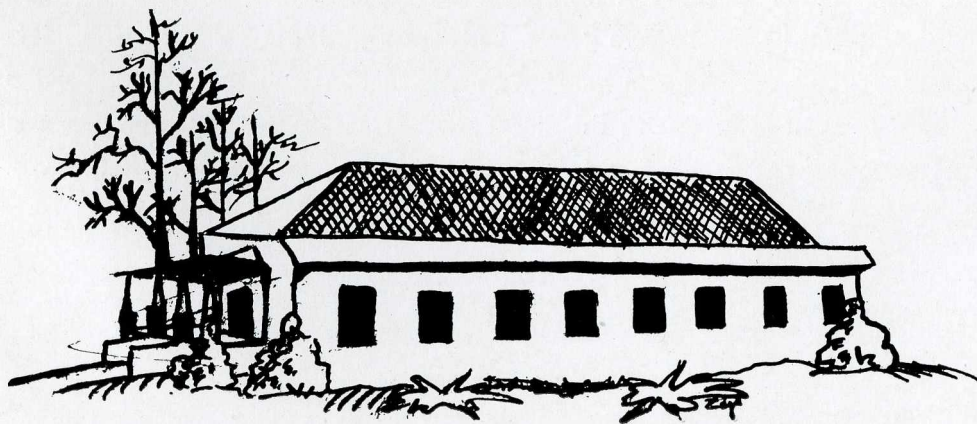
The Special Singing Group was organized purely for the fun of singing. As an extra-curricular activity, the organization met once a week to sing fun songs. Other types of music sung were light sacred, folk-songs, rounds and ballads.

Mary Zinszer served as president this year. Miss Ruth Graham acted as supervisor for the group.



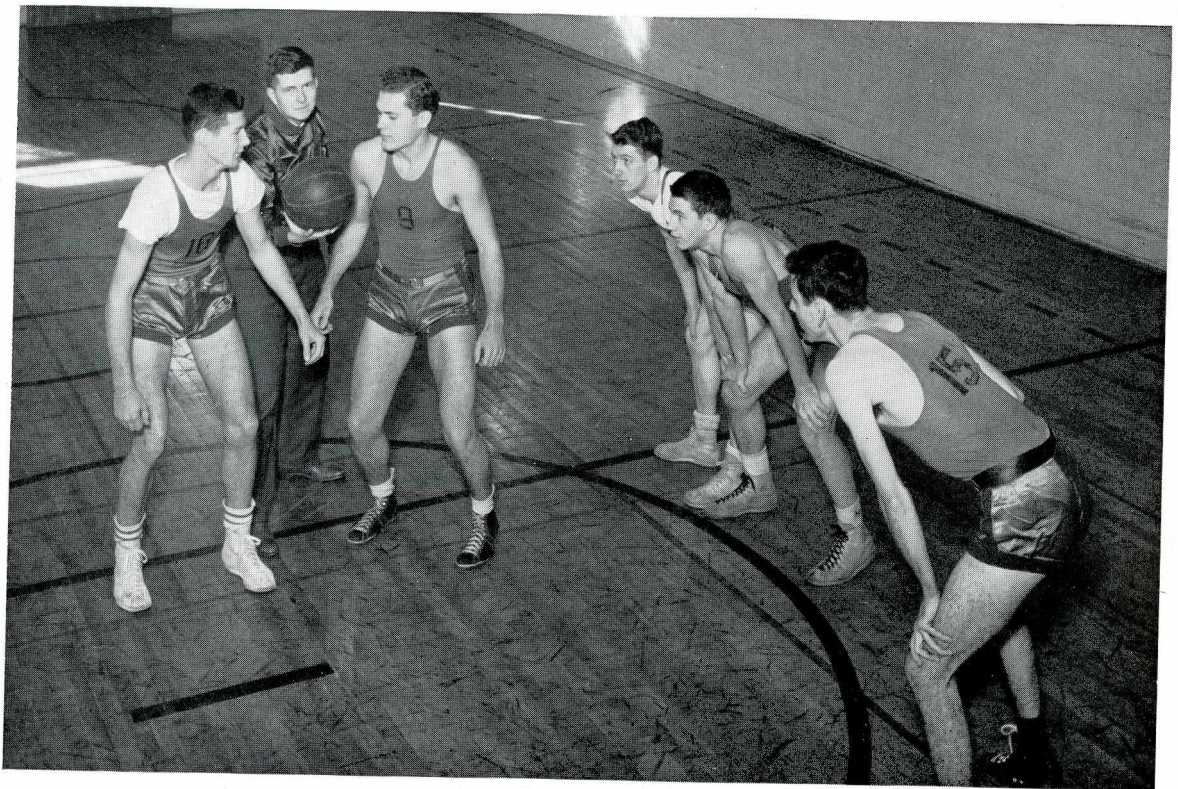
# ATHLETICS

Dear Philo —  
This page should be Reserved  
For good H.A. Athletes — like  
Philo and Foco, who can tell the  
score of a game and the winner before  
it is played. It really has been wonder-  
ful being with you this year and I  
want to wish you all the best in the  
world — Oh, yes! then there are our  
men — let me know — when, if and why  
you ever make up your mind!  
loyally  
Foco





# BASKETBALL



Downey, B. Wolverton, Lowry, Duane Campbell, Coomer, Doles.

## BOYS BASKETBALL

We are proud of our basketball team which played an undefeated season this year. The team gave us good games with fine playing and good teamwork. Since the Panthers could not compete with other colleges because of transportation restrictions, the season was played with local independent teams. Two games each were played with teams from Jeffersonville, Madison, Greensburg and one game with a U. S. O. team from the Louisville area. The success of the team was due to the direction given by Dr. Kutz as supervisor and Robert Wolverton as acting coach and also to the ability of the team members themselves.



# W. A. A.



First row: Thomas, Tetrick, Stevens, Anderson, Eickhoff, Hassler, Fleming, Bobb, Bruce, Foster, Thurston, Martin, Nauer, J. Demaree.  
 Second row: Witmyer, Brooks, Clover, Story, Kruggel, Tullis, Armbruster, R. A. Jones, M. Demaree, McReynolds, Hoskinson, Vestile, Hoffine, Rutledge, Ellis.  
 Third row: Fry, Goodlet, Zinszer, Peggy Shannon, Ewing, Sheppard, Baynes, M. H. Miller, Koger, M. J. Reed, Smith, S. Reed, Avril, Rehm, Peden, Barnes.  
 Fourth row: Bennett, Gilbert, Winters, Wharton, Sommer, Dean, Graebe, Fowler, A. K. Jones, Cummings, Jackson, A. Jones, Clements, Rogers, Mummert, Geake, Steadman.

## WOMEN'S ATHLETIC ASSOCIATION

The Women's Athletic Association under the direction of Miss Viola Mitchell has done much to stimulate interest and participation in women's athletics. For many years the W.A.A. has been governed by a board which meets every Tuesday evening. It has been the work of the board to direct such activities as the Basketball Banquet, Dime Day and the awarding of trophies and ribbons at the end of each sport season. The board consists of nine members and two advisors, Miss Mitchell and Miss Forrester. The organization as a whole strives to further good sportsmanship and fair play in the minds of its members. A girl may become a member through participation in any of the various sports offered aside from those required for graduation.

The officers are: Jean Hassler, president; June Anderson, vice-president; Frances Barnes Bruce, secretary, and Wilma Lindberg, treasurer.



Miss Forrester, B. Bennett, Eickhoff, Bruce, Hassler, Fleming, Rogers, Bobb, Anderson, Lindberg.



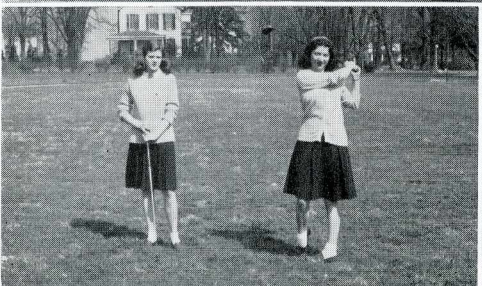
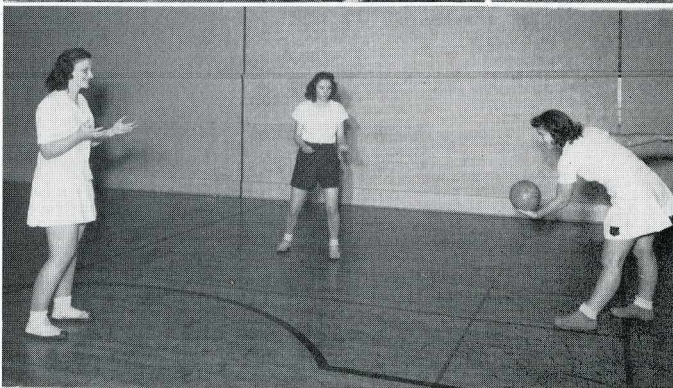
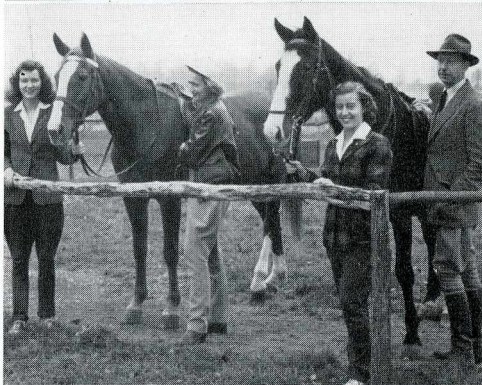
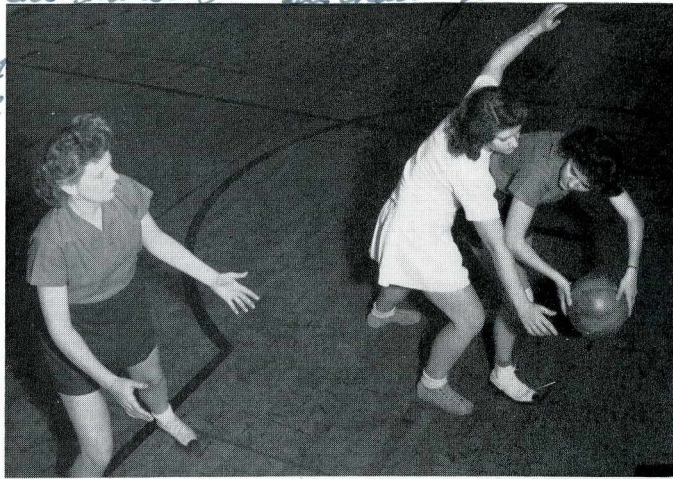
To Phys,

The one and only!

Why you aren't a phys.ed.  
major I still can't understand,  
but I guess you <sup>could</sup> ask the same of  
me. Maybe next year when I live  
here at the house I'll see how you  
manage so many  
activities  
so well?

"It's"

## WOMEN'S SPORTS





# ORGANIZATIONS



*A new altar to  
you, Phil.  
Loyalty  
Service*



# FRATERNITIES

McKenna, Reese, Paddock.



## TAU OF PHI GAMMA DELTA

Phi Gamma Delta fraternity was founded at Jefferson College in Cannonsburg, Pa., in 1848. Sixteen years later in 1864 Tau chapter, which was the eighth in order of origin, began. The fraternity now contains seventy-four active chapters in the United States and Canada.

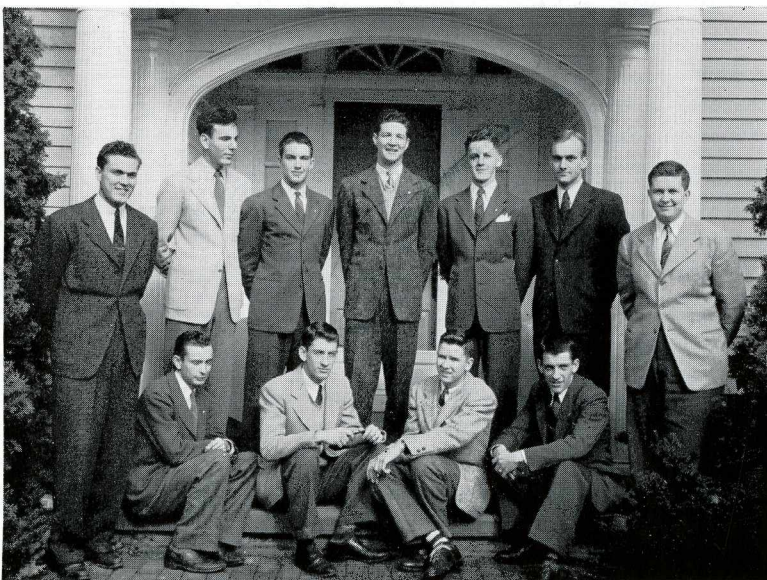
Although the activities of the fraternity have been decreased because of the few men now on the campus, the Fijis are looking forward to the day when the boys will return and they can again participate fully in school activities.

## CHI OF SIGMA CHI

Although the war has diminished the membership of Chi chapter, the present group will serve as a nucleus around which to build future chapters.

Sigma Chis are preserving their ideals and aims for the furthering of the peace time chapters. By keeping the chapter active, they keep before the college their purpose and preserve the thread of life that will tie the past to the future.

The brotherhood of Sigma Chi now reaches around the world, and though peace will not destroy that world-wide bond, it will bring Chi chapter into a more closely knit brotherhood.

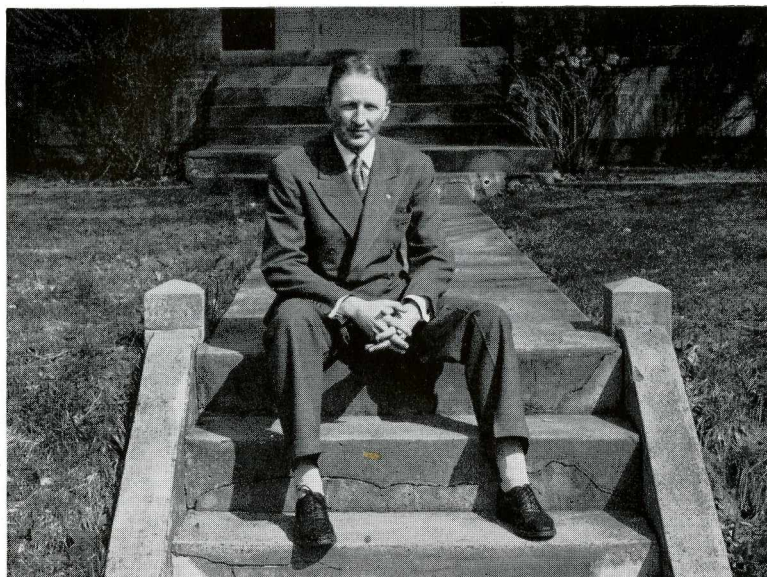


Seated: Chambers, Duane Campbell, Storm, Dewitt Campbell.

Standing: Lowry, Doles, Coomer, Downey, Roberts, Baumann, B. Wolvertson.



# FRATERNITIES



Robert Sayle.

## IOTA OF BETA THETA PI

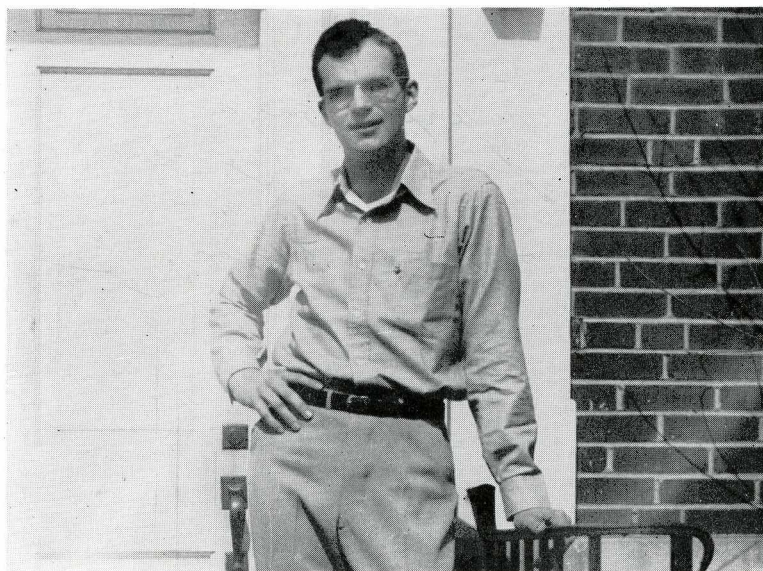
The future of Iota of Beta Theta Pi is tied to the present by its one representative on the Hanover campus. Mr. Sayle, a returned service man, is but the beginning of the flow of veterans back into American colleges and universities. School is a part of home to them, and now the value of education comes to them in a sharper focus.

The post-war Beta fraternity will be many times its present size and will unite in a single group brother Betas who are now serving their country around the world.

## INDIANA EPSILON OF PHI DELTA THETA

The Phi Delta Theta shield and diamond isn't seen as often on the Hanover campus as it has been in past years. Mr. Lagemann, a sophomore, is serving his chapter during the present, but has an eye on the future with its promises of better things.

In keeping the chapter active, Mr. Lagemann offers a service to his school and to his fraternity.



Louis Lagemann.



To Phil -  
 I'll always believe  
 your sophomore  
 year is the year!  
 See you in September  
 and have to a good  
 year 44-45 - love -  
 Judy

## SORORITIES



First row: Ellis, Goodlet, Rutledge, Story, Kruggel, Cummings, Steadman, Baker, Folger, Hoskinson.

Second row: E. Bennett, Foster, Eickhoff, Miss Fitton, Bruce, Bobb, Strawbridge, Morgan, J. Demaree.

Third row: Kopel, S. Reed, Smith, Brooks, Avril, Bullock, Lasley, Siegel, Ewing, Barnes, A. Jones, B. Bennett, Zinszer, McGilliard.

Fourth row: Shively, Fleming, Cadwallader, Clover, Taylor, H. Gilbert, Allan, Stansifer, Peggy Shannon, Berg, Witmyer, Mueller, M. E. Wilson, Davis.

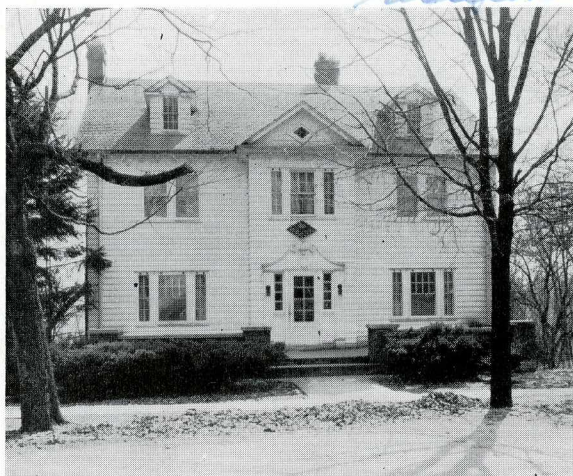
To Flems -  
 A wonderful gal and a real A.D.P. girl really  
 wonderful having you as one of my A.D.P.  
 sisters. You're services are sweet. I'd  
 be lost without you in German! I hope  
 to know you even better next year.  
 Love,  
 Janice

# PHI OF ALPHA DELTA PI



## SORORITIES

Dear Phyl,  
It has been wonderful  
rooming with you this year.  
Thank you for introducing  
me to Shelbyville and  
those wonderful Fleming  
matts. Remember you are  
always welcome at the Taylor  
residence — be sure to take advantage  
of this.  
Lois



Founded in May, 1851, at Macon, Georgia, the "Adelphian Society," the first secret society for women, Alpha Delta Pi has witnessed many changes in the scheme of the world. Though the war seems to strike at the very roots of civilization and democracy, Alpha Delta Pi will survive and live to see many other college generations just as she has survived other similar crises.

The future holds great promise for Alpha Delta Pi and her sisterhood. This, the thirty-second year of the existence of Phi Chapter on the Hanover campus, seems to many to have been a critical one. There have been times before when it seemed as though normal college life must certainly be a thing of the past, yet each time, Alpha Delta Pi has come through with an even stronger bond of faith and hope and love.

Alpha Delta Pi sincerely hope with all sororities and fraternities that it may be a factor in alleviating the suffering and horrors of this war and that we may help prevent future periods such as this one.



## SORORITIES



First row: McReynolds, Tetrick, Vestile, Wharton, Hoffine, L. Gwinn, Chapman, Geake, Rehm, A. K. Jones, McCormick, Evans.

Second row: M. A. Jones, Beck, Mummert, Winters, Fry, Rogers, Stevens, Hassler, P. Gwinn, Lindberg, M. Demaree, Tash.

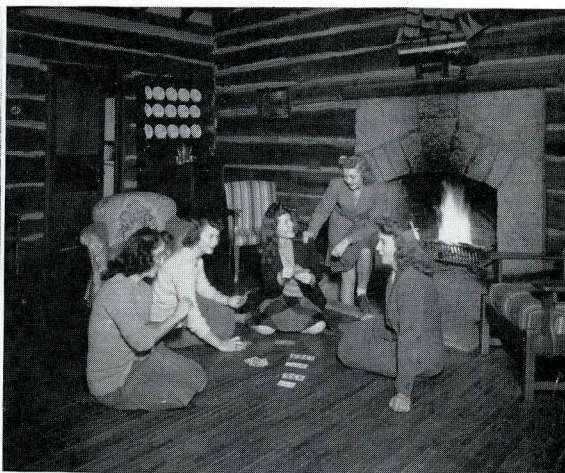
Third row: Reibert, L. Gilbert, Ashby, Ebersole, Tullis, Eisenhardt, R. A. Jones, G. Wilson, Fawcett, MacMurchy, W. Walker, Morris, Voiles.

Fourth row: Goar, Marilyn Shannon, Jackson, Gray, Voorhees, Martin, Albertson.

## RHO OF PHI MU



# SORORITIES



Phi Mu, one of the oldest sororities, was founded at Wesleyan College, Macon, Georgia. Its three founders, Mary Myrick Daniels, Martha Hardaway Redding, and Mary Dupont Lines, announced it to the world on March 4, 1852. The Hanover chapter was originally Phi Theta Mu, a local sorority, which emerged into the present Rho chapter of Phi Mu in 1913.

This has been another year in which Hanover girls have had to take the greater responsibility of campus activities. Rho has tried to do her part in helping to keep alive those ideals and traditions characteristic of our college. Many of the girls have prominent offices in organizations such as Student Council, Christian Service Club, Dramatics Club, and many others.

This year also brought twenty-nine new Phi Mu girls. With the usual spirit of cooperation, Phi Mu has completed another successful year with Jean Hassler serving as her efficient president.



*Best wishes and good luck, always.  
Marilyn Heler.*

## INDEPENDENTS



First row: Hara, Gibson, Gunnoe, Sommer, McNeeley, Weatherbee.

Second row: Hardin, Orewiler, Armbruster, Dean, Joyce, Shirai, Adams.

Third row: Hernandez, Thurston, Anderson, Graebe, Buchanan, Baynes, M. H. Miller.

Fourth row: Heslip, Howard, Ramsay, Sheppard, Fowler, Kirtland, Itoi.

## INDEPENDENT WOMEN



# INDEPENDENTS

*Good luck to a swell kid.  
And I do mean swell.  
See you next year.  
Baynes*



## INDEPENDENT WOMEN

Fourteen years ago thirty girls on the Hanover campus joined together to form the Independent Women. The main purpose of the organization is to create a fuller college life through friendship and devotion to the best interests of Hanover College.

The Independent Girls participate in the major activities of the campus and show leadership in the student organizations. They rank high in scholarship and athletics. A Thanksgiving Tea in the fall and a formal dinner in the spring are two highlights of their year.

The I. W.'s have done their best to help to further the interests of Hanover College, to uphold its standards and traditions. They realize the necessity of keeping the college at Hanover operating until this phase of the world's history is past. They are now trying to the best of their ability to carry on the ordinary functions of the college through this dark hour until a brighter day shall come and Hanover will resume its normal activities.



# STRAY GREEKS

MARY JANE REED

Delta Gamma

JACK DURICK

Delta Upsilon

# LATE PLEDGES

ALPHA DELTA PI

Gladys Koger

Agnes Swartz

Maxie Peden

PHI MU

Mary Stokes

Kay Nauer

Jean Lambert

Mary Thomas

SIGMA CHI

Melvin Wolverton

Carroll James



# AUTOGRAPHS

Dear F. Lemo,  
 You have played a  
 large part in making  
 my sophomore year a  
 happy one. Remember, I'm  
 always available when you  
 need a shopper. Thanks for  
 the blind date with Phil, and  
 for the introduction to the  
 D-family.

Love,  
 Geo  
 Nov. (front room.)

Beautiful Ch. L.

Then what - I'm going to write when it  
 says autographs! Gosh, what can I say? -  
 In the first place I hate to write in these  
 & in the second - I can't write what  
 I want to. Anyhow - you've been  
 simply grand about everything - & I  
 mean it - everything. I know how  
 much you've been the brains behind  
 this outfit - and I do appreciate all you've  
 done & said for me. I like your  
 spirit - & I even like your temper.  
 I have one, too. - Best of luck always -  
 and all the breaks - you've really  
 made a terrific start - Send me  
 your wedding announcement!!! -  
 Sincerely,  
 Barney

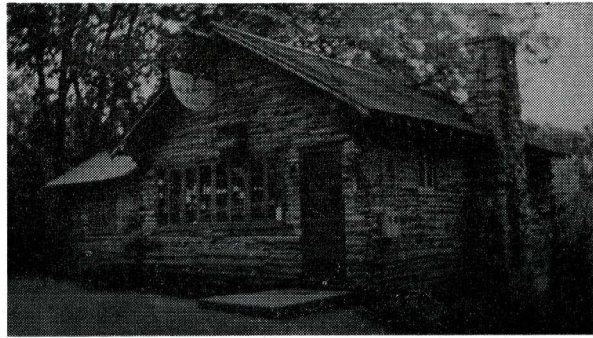


# ADVERTISEMENTS

## THE CAMPUS CABIN

THANK YOU FOR  
YOUR LOYAL PATRONAGE

DAN and JACK



## ROUSCH'S

GREETING CARDS  
For All Occasions

## DEMOCRAT PRINTING COMPANY

PRINTERS  
TO HANOVER STUDENTS  
Madison - - Indiana

## R. C. WOOLEY

JEWELER and OPTOMETRIST  
Madison, Indiana

Compliments of  
**NATIONAL BRANCH BANK**  
AND  
**MADISON SAFETY DEPOSIT**  
and TRUST COMPANY

Compliments of  
**JOHN KNOEBEL**  
and SON

## BE SAFE WITH PURE HANOVER GARAGE

AT YOUR SERVICE  
Phone 25

## GENUINE GAS COKE MADISON UTILITIES CORPORATION

Domestic Fuel of Highest Quality  
No Smoke, No Soot, Low Ash  
Phone 282 Madison, Ind.

## COMPLIMENTS OF HUGHES TOBACCO WAREHOUSE

LOOK YOUR BEST  
Patronize  
**MOUNTJOY  
DRY CLEANERS**

ELECTRIC SERVICE FOR  
HANOVER AND HANOVER COLLEGE  
Supplied by  
**MADISON LIGHT and  
POWER COMPANY**  
Phone 287 Madison, Ind.



# ADVERTISEMENTS

## INGLIS DRUG STORE

MADISON  
Headquarters For  
Hanover Students for Years Past  
And We Hope for Years to Come

## OSCAR C. BEAR

JEWELER AND OPTOMETRIST  
Madison, Indiana

## MADISON RADIO SERVICE

RECORDS - TUBES - PARTS  
Phone 56-X  
105 West Main St. Madison, Ind.

## EAST END GROCERY

Phone 22  
Hanover, Indiana

Compliments of

## FIRST NATIONAL BANK

Madison, Indiana



For Their Help and Cooperation  
In Printing This Revonah  
WE THANK THE  
**GRAESSLE-MERCER  
COMPANY**

RENOVAH 1945 ACKNOWLEDGES  
Helpful Cooperation of

## INDIANAPOLIS ENGRAVING COMPANY

In the Publishing of this Yearbook

## KNOEBEL-BIRD

THE STUDENT'S STORE

Arrow Shirts Dobbs Hats  
Ralph T. Knoebel J. H. Bird  
Madison, Indiana

## REED'S LAUNDRY

Has Served Hanover for 45 Years  
210 West Main St. Madison, Indiana

## DANA

The Most Remarkable Coal in Madison  
STOKER - LUMP - EGG

## MADISON COAL and SUPPLY COMPANY

Phone 65 Madison, Indiana

## ENJOY THE BEST AT SCOTTY'S GRILL

Home Cooking  
CHICKEN and STEAK DINNERS  
111 East Main St. Madison, Ind.

## HILL'S STORE

FOR  
GROCERIES AND SUPPLIES

Compliments of

## MORRIS

5c - 10c - \$1.00



# AUTOGRAPHS

Elmo Peckham

I'm glad I came to the house to make  
a few more of our room. Remember the  
weekend before Lentition this year - we sat  
up til 4:00 AM. (cussing) - What a night!  
quite a swell person Phil - I'm looking  
forward to see you here at the house.

Remember  
the Rabbi's remarks  
about the Pope...

Love,  
Na

Dear Phil,  
I'm really appreciated  
all the publicity Phyllis -  
also the talk you gave  
last night - you help things  
going around here and  
I'll see you next year.  
The best of such to you  
in all that you do, but  
I really don't think you'll  
need it.

Love,  
Eick











